

TYPE OR PRINT

~~NOTICE OF INTENTION TO DRILL~~ **NOTICE OF INTENTION TO DRILL**

C-1

15-155-20, 123-600

TO BE FILED WITH THE STATE CORPORATION COMMISSION PRIOR TO COMMENCEMENT OF WELL

*Corrected*

1. Operator Independent Lease Management Address 800 Wichita Plaza, Wichita, Ks.

2. Lease name Zenith Unit, Tract #10, Co. Banz Well No. 1 County Reno

*Corrected* 3. Well Location 100' no. & 100' west Sec 32 Township 32S 23S Range 10W

4. Well to be drilled 4060 ft. from nearest lease line. of center of West Half (W/2)

5. Drilling Contractor Kathol Petroleum, Inc. Address 900 Sutton Place, Wichita, Ks.

6. Type of equipment: Rotary  Cable Tool  Approx. date operation to begin 7-18 1969

7. Well to be drilled for Oil  Gas  Disposal  Input  Estimated Total Depth of Well 3760 ft.

8. Depth of deepest fresh water well within one mile of location 70 ft. If none exists, write NONE

9. Ground elevation at location is approx. -- ft. higher or -- ft. lower than ground elevation at water well.

10. Depth of the deepest municipal water well within three miles of location None ft. If none exists, write NONE

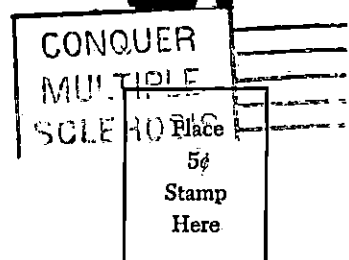
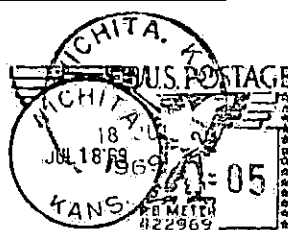
11. Operator states that he will set surface pipe at least 25 ft. below all Tertiary or unconsolidated deposits and, taking into consideration differences in ground elevations, that the minimum depth necessary, to the best of his knowledge and belief, to protect all fresh water zones is 70 ft. and operator agrees to set surface pipe at this location to a depth of not less than 250 ft. Alternate 1  Alternate 2 .

REMARKS:

Signature of Operator

*Jack Springs*





**State Corporation Commission of Kansas  
Conservation Division  
500 Insurance Building  
212 North Market  
Wichita, Kansas 67202**

**RECEIVED  
STATE CORPORATION COMMISSION  
JUL 22 1969  
CONSERVATION DIVISION  
Wichita, Kansas**

**(IF PREFERRED, MAIL IN ENVELOPE)**