

STATE CORPORATION COMMISSION OF KANSAS
OIL & GAS CONSERVATION DIVISION
WELL COMPLETION FORM
ACO-1 WELL HISTORY
DESCRIPTION OF WELL AND LEASE

ORIGINAL

API NO. 15- 185-22,743-0000
County Stafford

Operator: License # 5107
Name: H-30 Drilling, Inc.
Address 251 N. Water
Suite #10
City/State/Zip Wichita, KS 67202

- NE - NW - SW Sec. 34 Twp. 22s Rge. 12 X ^E/_W
2310 Feet from (S/N) (circle one) Line of Section
4290 Feet from (E/W) (circle one) Line of Section

Purchaser: N-A
Operator Contact Person: Jeffrey A. Burk
Phone (316) 263-2043

Footages Calculated from Nearest Outside Section Corner:
NE, SE, NW or SW (circle one)
Lease Name Esther Allen Well # 1-34
Field Name Wildcat

Contractor: Name: H-30 Drilling, Inc.
License: 5107
Wellsite Geologist: Jeffrey A. Burk

Producing Formation D & A
Elevation: Ground 1835' KB 1840'
Total Depth 3750' PBDT N-A
Amount of Surface Pipe Set and Cemented at 265 Feet

Designate Type of Completion
 New Well Re-Entry
 Oil SWD SIOW
 Gas EMHR SIGW
 Dry Other (Core, WSW, Expl., Catfish, etc.)

Multiple Stage Cementing Collar Used? Yes No
If Yes, show depth set N-A Feet
Alternate II completion, cement circulated from N-A
feet depth to N-A w/ N-A sx cat.

If Workover/Re-Entry: old well info as follows:
Operator: N-A
Well Name: N-A
Comp. Date N-A Old Total Depth N-A
 Deepening Re-perf. Conv. to Inj/SWD
 Plug Back PBDT
 Commingled Docket No. _____
 Dual Completion Docket No. _____
 Other (SWD or Inj?) Docket No. _____
12-10-90 12-18-90 12-18-90
Spud Date Date Reached TD Completion Date

Drilling Fluid Management Plan ABT DYA
(Data must be collected from the Reserve Pit)
Chloride content 15,000 ppm Fluid volume 320 bbls
Dewatering method used Water Haul-off
Location of fluid disposal if hauled offsite:
Operator Name Ellinwood Tank Service
Lease Name Siefkes "SWD" License No. 4297
NW/4 Quarter Sec. 13 Twp. 22s S Rng. 12 X ^E/_W
County Stafford Docket No. D-22,209

RECEIVED
KANSAS CORPORATION COMMISSION
MAR 5 1992
WICHITA, KS
CONSERVATION DIVISION

INSTRUCTIONS: An original and two copies of this form shall be filed with the Kansas Corporation Commission, 200 Colorado Derby Building, Wichita, Kansas 67202, within 120 days of the spud date, recompletion, workover or conversion of a well. Rule 82-3-130, 82-3-106 and 82-3-107 apply. Information on side two of this form will be held confidential for a period of 12 months if requested in writing and submitted with the form (see rule 82-3-107 for confidentiality in excess of 12 months). One copy of all wireline logs and geologist well report shall be attached with this form. ALL CEMENTING TICKETS MUST BE ATTACHED. Submit CP-4 form with all plugged wells. Submit CP-111 form with all temporarily abandoned wells.

All requirements of the statutes, rules and regulations promulgated to regulate the oil and gas industry have been fully complied with and the statements herein are complete and correct to the best of my knowledge.

Signature [Signature]
Title Exploration Manager Date 02-27-92
Subscribed and sworn to before me this 27 day of February, 19 92.
Notary Public [Signature]
Date Commission Expires _____

SUSAN M. KIBBE
NOTARY PUBLIC
STATE OF KANSAS
My Appl. Exp. 08/29/95

K.C.C. OFFICE USE ONLY
F Letter of Confidentiality Attached
C Wireline Log Received
C Geologist Report Received
Distribution
 KCC SWD/Rep NGPA
 KGS Plug Other (Specify)

Operator Name H-30 Drilling, Inc.

Lease Name Esther Allen

Well # 1-34

Sec. 34 Twp. 22s Rge. 12
 East
 West

County Stafford

INSTRUCTIONS: Show important tops and base of formations penetrated. Detail all cores. Report all drill stem tests giving interval tested, time tool open and closed, flowing and shut-in pressures, whether shut-in pressure reached static level, hydrostatic pressures, bottom hole temperature, fluid recovery, and flow rates if gas to surface during test. Attach extra sheet if more space is needed. Attach copy of log.

Drill Stem Tests Taken Yes No
 (Attach Additional Sheets.)

Samples Sent to Geological Survey Yes No

Cores Taken Yes No

Electric Log Run Yes No
 (Submit Copy.)

List All E.Logs Run: Coral-DIL-CDL-DSN
(Halliburton Logging)

Log	Formation (Top), Depth and Datum	Sample
	Name Top Datum	
	Anhydrite 607 (+1233)	
	Heebner 3147 (-1307)	
	Br. Lime 3281 (-1441)	
	Lansing 3306 (-1466)	
	B-Kansas City 3548 (-1708)	
	Cong. Shale 3560 (-1720)	
	Cong. Chert 3570 (-1730)	
	T.D. 3749 (-1909)	

CASING RECORD <input type="checkbox"/> New <input checked="" type="checkbox"/> Used							
Report all strings set-conductor, surface, intermediate, production, etc.							
Purpose of String	Size Hole Drilled	Size Casing Set (In O.D.)	Weight Lbs./Ft.	Setting Depth	Type of Cement	# Sacks Used	Type and Percent Additives
*Surface	12 1/4"	8 5/8	20	265'	60/40	220	2% gel, 3% cc.
*Cement did not circulate so 1" was used with additional						35	2% gel, 3% cc.

ADDITIONAL CEMENTING/SQUEEZE RECORD				
Purpose:	Depth Top Bottom	Type of Cement	#Sacks Used	Type and Percent Additives
<input type="checkbox"/> Perforate				
<input type="checkbox"/> Protect Casing				
<input type="checkbox"/> Plug Back TD				
<input type="checkbox"/> Plug Off Zone				

Shots Per Foot	PERFORATION RECORD - Bridge Plugs Set/Type	Acid, Fracture, Shot, Cement Squeeze Record
	Specify Footage of Each Interval Perforated	(Amount and Kind of Material Used) Depth

TUBING RECORD		Size	Set At	Pecker At	Liner Run	<input type="checkbox"/> Yes <input type="checkbox"/> No
Date of First, Resumed Production, SWD or Inj.	Producing Method <input type="checkbox"/> Flowing <input type="checkbox"/> Pumping <input type="checkbox"/> Gas Lift <input type="checkbox"/> Other (Explain)					
Estimated Production Per 24 Hours	Oil Bbls.	Gas Mcf	Water Bbls.	Gas-Oil Ratio	Gravity	

Disposition of Gas: Vented Sold Used on Lease (If vented, submit ACO-18.)

METHOD OF COMPLETION: Open Hole Perf. Dually Comp. Commingled Other (Specify) _____

Production Interval _____

ORIGINAL

15-185-22743-0000

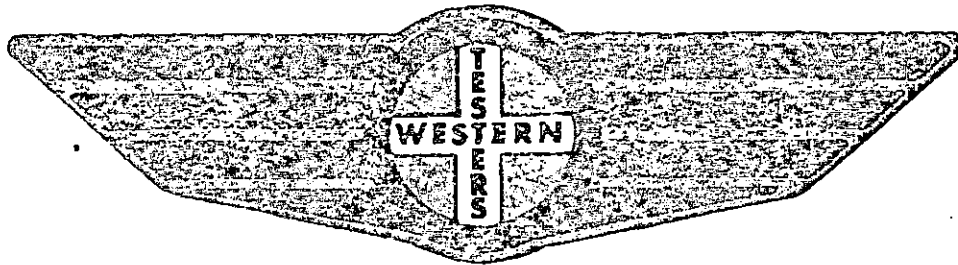
COMPANY COLUMBIAN SERVICES CORP. LEASE & WELL NO. ESTHER ALLEN # 1-34 SEC. 34 TWP. 22S. RGE. 12W. TEST NO. 1 DATE 12-14-90

FORMATION

TEST

REPORT

LEASE FILE



Home Office: Wichita, Kansas 67201

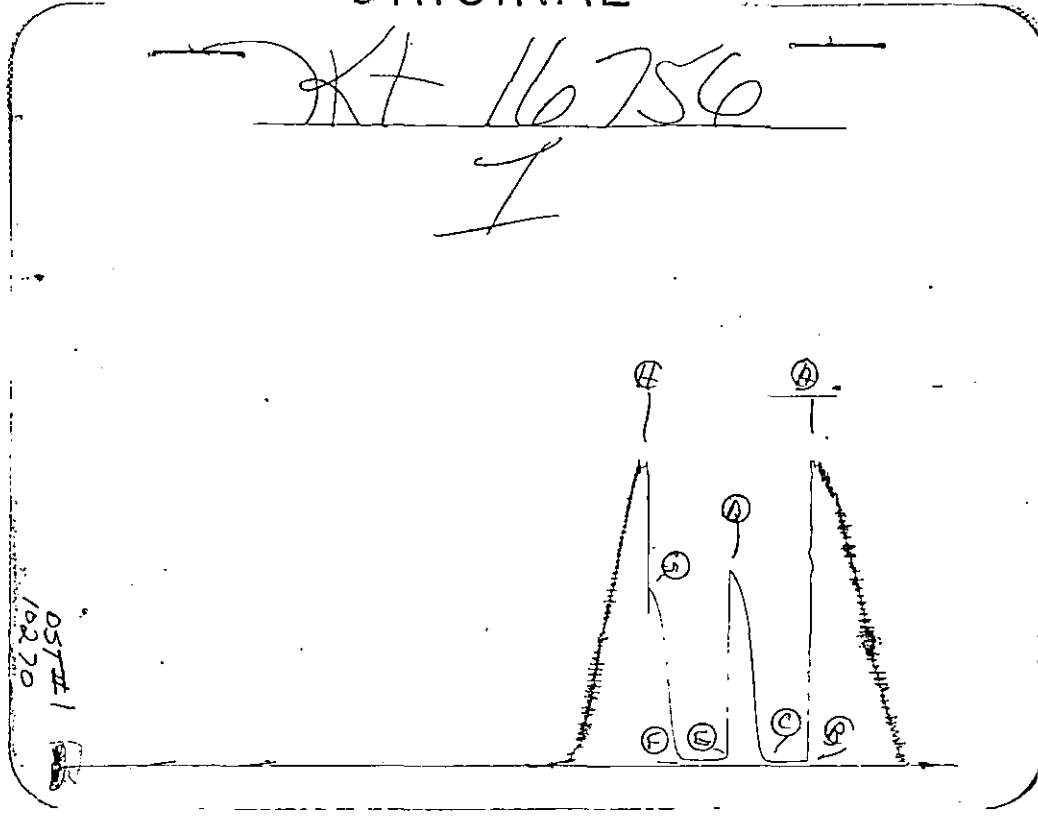
P.O. Box 1580 Phone (316) 262-5861

RECEIVED
KANSAS CORPORATION COMMISSION

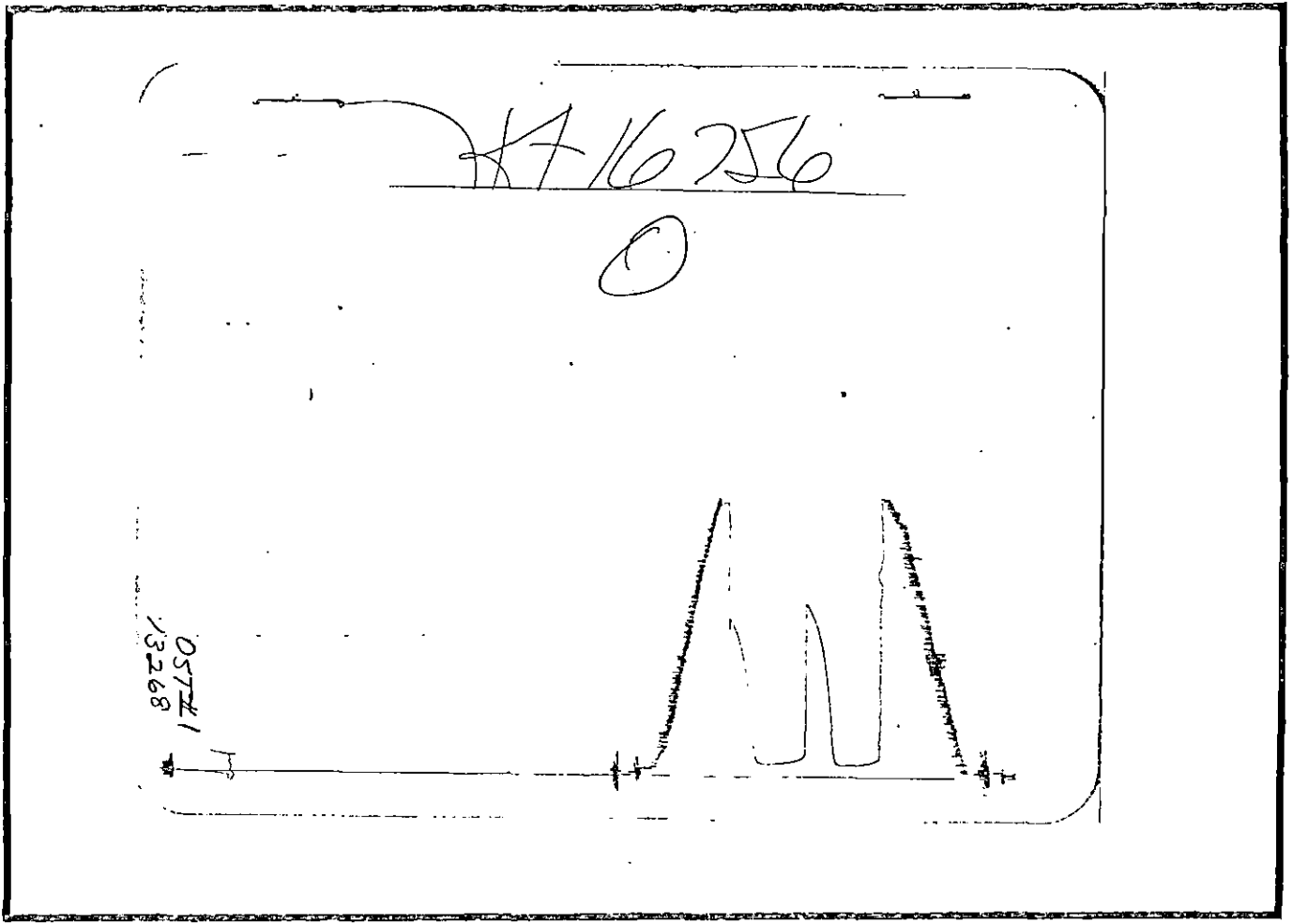
MAR 5 1992

CONSERVATION DIVISION
WICHITA, KS

ORIGINAL



Inside Recorder



Outside Recorder

ORIGINAL

15-185-22743-0000

WESTERN TESTING CO. INC. SUBSURFACE PRESSURE SURVEY

DATE : 12-14-90
CUSTOMER : COLUMBIAN SERVICES CORP.
WELL : 1-34 TEST: 1
ELEVATION : 1840 K.B.
SECTION : 34
RANGE : 12W COUNTY : STAFFORD
GAUGE SN# : 10270 RANGE : 4150
TICKET : 16756
LEASE : ESTHER ALLEN
GEOLOGIST : BURK
FORMATION : LANSING B D & F
TOWNSHIP : 22S
STATE : KANSAS
CLOCK : 12

INTERVAL FROM : 3325 TO : 3393 TOTAL DEPTH : 3393
DEPTH OF SELECTIVE ZONE :
PACKER DEPTH : 3320 SIZE : 6.63
PACKER DEPTH : 3325 SIZE : 6.63
PACKER DEPTH : SIZE :
PACKER DEPTH : SIZE :

DRILLING CON. : H-30 RIG 7
MUD TYPE : CHEMICAL VISCOSITY : 46
WEIGHT : 9.2 WATER LOSS (CC) : 8.6
CHLORIDES (PPM) : 7900
JARS-MAKE : SERIAL NUMBER :
DID WELL FLOW ? : NO REVERSED OUT ? : NO

DRILL COLLAR LENGTH : 0 FT I.D. inch : 0.00
WEIGHT PIPE LENGTH : 0 FT I.D. inch : 0.00
DRILL PIPE LENGTH : 3305 FT I.D. inch : 3.80
TEST TOOL LENGTH : 20 FT TOOL SIZE : 5.50
ANCHOR LENGTH : 68 FT ANCHOR SIZE : 5.50
SURFACE CHOKE SIZE : .75 IN BOTTOM CHOKE SIZE : .75
MAIN HOLE SIZE : 7.875 IN TOOL JOINT SIZE : 4.5XH

BLOW COMMENT #1 : INITIAL FLOW PERIOD WEAK BLOW-DIED IN 20 MINUTES.
BLOW COMMENT #2 : FINAL FLOW PERIOD-NO BLOW.
BLOW COMMENT #3 :
BLOW COMMENT #4 :

ORIGINAL

15-185-22743-0000

RECOVERED : 30 FT OF: SLY OIL CUT MUD-1%OIL:99%MUD

Total Barrels Fluid = 0.42
Total Fluid Prod Rate = 10.10 BFPD
Indicated Oil Rate = 0.10 BOPD
Indicated Wtr Rate = 1.00 BWPD
Corrected Oil Rate = 7.19 BOPD
Corrected Wtr Rate = 71.15 BWPD

REMARK 1 :
REMARK 2 :
REMARK 3 :
REMARK 4 :

SET PACKER(S) : 6:40 P.M.

TIME STARTED OFF BOTTOM : 8:40 P.M.

WELL TEMPERATURE : 104

INITIAL HYDROSTATIC PRESSURE

(A) 1643

INITIAL FLOW PERIOD MIN: 30

(B) 26

PSI TO (C) : 26

INITIAL CLOSED IN PERIOD MIN: 30

(D) 1054

FINAL FLOW PERIOD MIN: 30

(E) 31

PSI TO (F) : 34

FINAL CLOSED IN PERIOD MIN: 30

(G) 967

FINAL HYDROSTATIC PRESSURE

(H) 1619

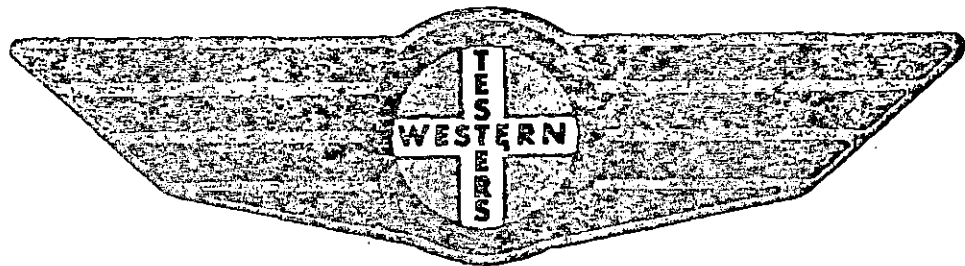
ORIGINAL

FORMATION

TEST

REPORT

LEASE FILE

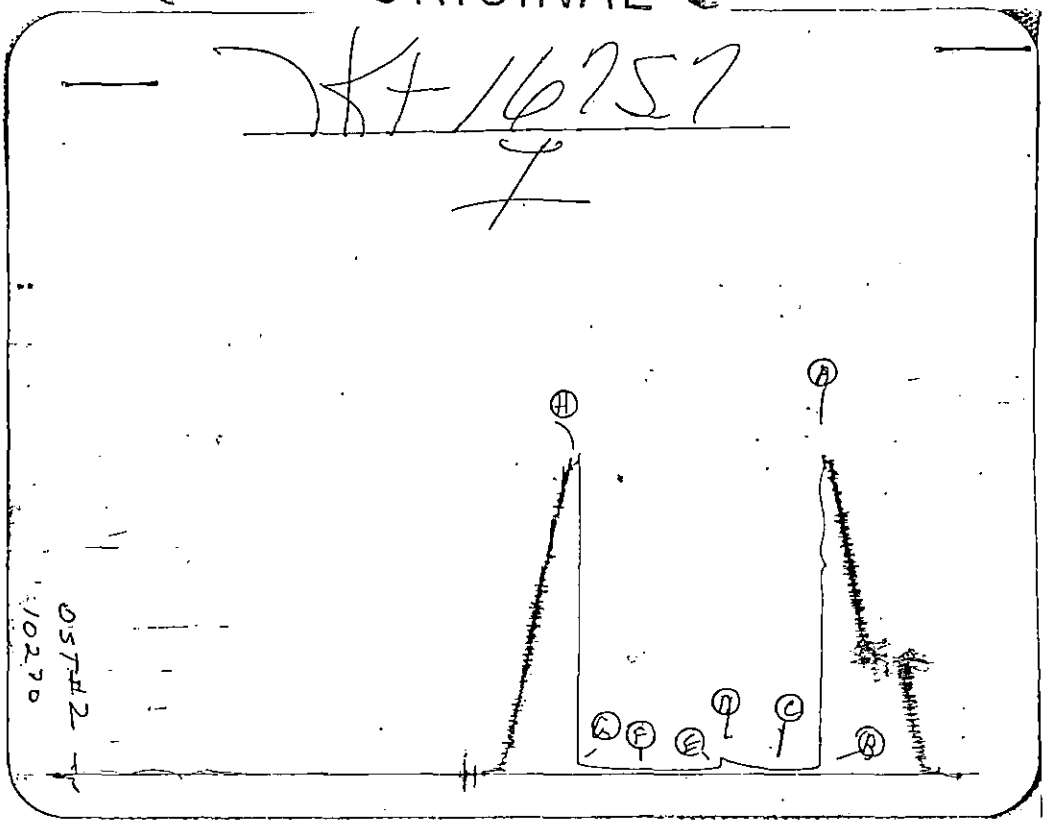


Home Office:
P.O. Box 1599

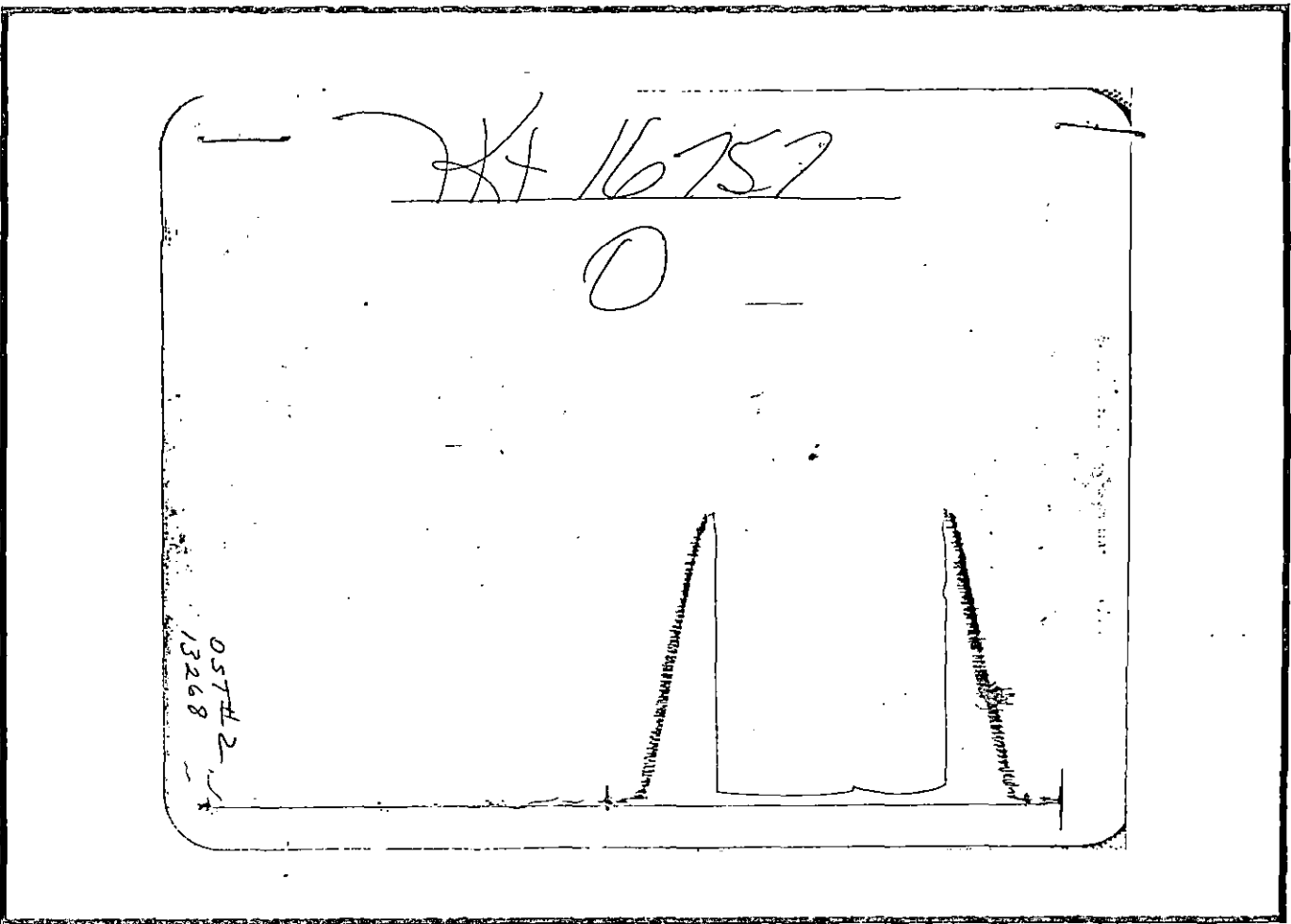
Wichita, Kansas 67201
Phone (316) 262-5861

COMPANY COLUMBIAN SERVICES CORP. LEASE & WELL NO. ESTHER ALLEN # 1-34 SEC. 34 TWP. 22S RGE. 12W TEST NO. 2 DATE 12-15-90

ORIGINAL



Inside Recorder



Outside Recorder

ORIGINAL

15-185-22743-0060

WESTERN TESTING CO. INC.
SUBSURFACE PRESSURE SURVEY

DATE : 12-15-90
CUSTOMER : COLUMBIAN SERVICES CORP.
WELL : 1-34 TEST: 2
ELEVATION : 1840 K.B.
SECTION : 34
RANGE : 12W COUNTY : STAFFORD
GAUGE SN# : 10270 RANGE : 4150
TICKET : 16757
LEASE : ESTHER ALLEN
GEOLOGIST : BURK
FORMATION : LANSING I&J
TOWNSHIP : 22S
STATE : KANSAS
CLOCK : 12

INTERVAL FROM : 3450 TO : 3494 TOTAL DEPTH : 3494
DEPTH OF SELECTIVE ZONE :
PACKER DEPTH : 3445 SIZE : 6.63
PACKER DEPTH : 3450 SIZE : 6.63
PACKER DEPTH : SIZE :
PACKER DEPTH : SIZE :

DRILLING CON. : H-30 RIG 7
MUD TYPE : CHEMICAL VISCOSITY : 49
WEIGHT : 9.1 WATER LOSS (CC) : 9.2
CHLORIDES (PPM) : 7700
JARS-MAKE : SERIAL NUMBER :
DID WELL FLOW ? : NO REVERSED OUT ? : NO

DRILL COLLAR LENGTH : 0 FT I.D. inch : 0.00
WEIGHT PIPE LENGTH : 0 FT I.D. inch : 0.00
DRILL PIPE LENGTH : 3430 FT I.D. inch : 3.80
TEST TOOL LENGTH : 20 FT TOOL SIZE : 5.50
ANCHOR LENGTH : 44 FT ANCHOR SIZE : 5.50
SURFACE CHOKE SIZE : .75 IN BOTTOM CHOKE SIZE : .75
MAIN HOLE SIZE : 7.875 IN TOOL JOINT SIZE : 4.5XH

BLOW COMMENT #1 : INITIAL FLOW PERIOD-WEAK BLOW THROUGHOUT
BLOW COMMENT #2 : 1/4 INCH TO 1 INCH BLOW.
BLOW COMMENT #3 : FINAL FLOW PERIOD-WEAK BLOW THROUGHOUT
BLOW COMMENT #4 : 1/2 INCH DECREASED TO SURFACE BLOW.

ORIGINAL

RECOVERED : 10 FT OF: SLY OIL CUT MUD-2%OIL:98%MUD

Total Barrels Fluid	=	0.14
Total Fluid Prod Rate	=	2.24 BFPD
Indicated Oil Rate	=	0.04 BOPD
Indicated Wtr Rate	=	0.22 BWPD
Corrected Oil Rate	=	0.60 BOPD
Corrected Wtr Rate	=	2.93 BWPD

REMARK 1 :
 REMARK 2 :
 REMARK 3 :
 REMARK 4 :

SET PACKER(S) : 12:20 P.M.

TIME STARTED OFF BOTTOM : 3:20 P.M.

WELL TEMPERATURE : 106

INITIAL HYDROSTATIC PRESSURE

(A) 1695

INITIAL FLOW PERIOD MIN: 30

(B) 29 PSI TO (C) : 29

INITIAL CLOSED IN PERIOD MIN: 42

(D) 93

FINAL FLOW PERIOD MIN: 60

(E) 27 PSI TO (F) : 28

FINAL CLOSED IN PERIOD MIN: 45

(G) 55

FINAL HYDROSTATIC PRESSURE

(H) 1676

ORIGINAL

15-185-22743-0000

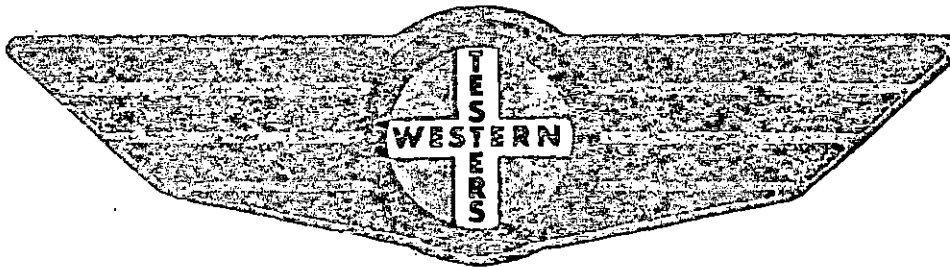
COMPANY COLUMBIAN SERVICES CORP. LEASE & WELL NO. ESTHER ALLEN # 1-34 SEC. 34 TWP. 22S RGE. 12W TEST NO. 3 DATE 12-16-90

FORMATION

TEST

REPORT

LEASE FILE

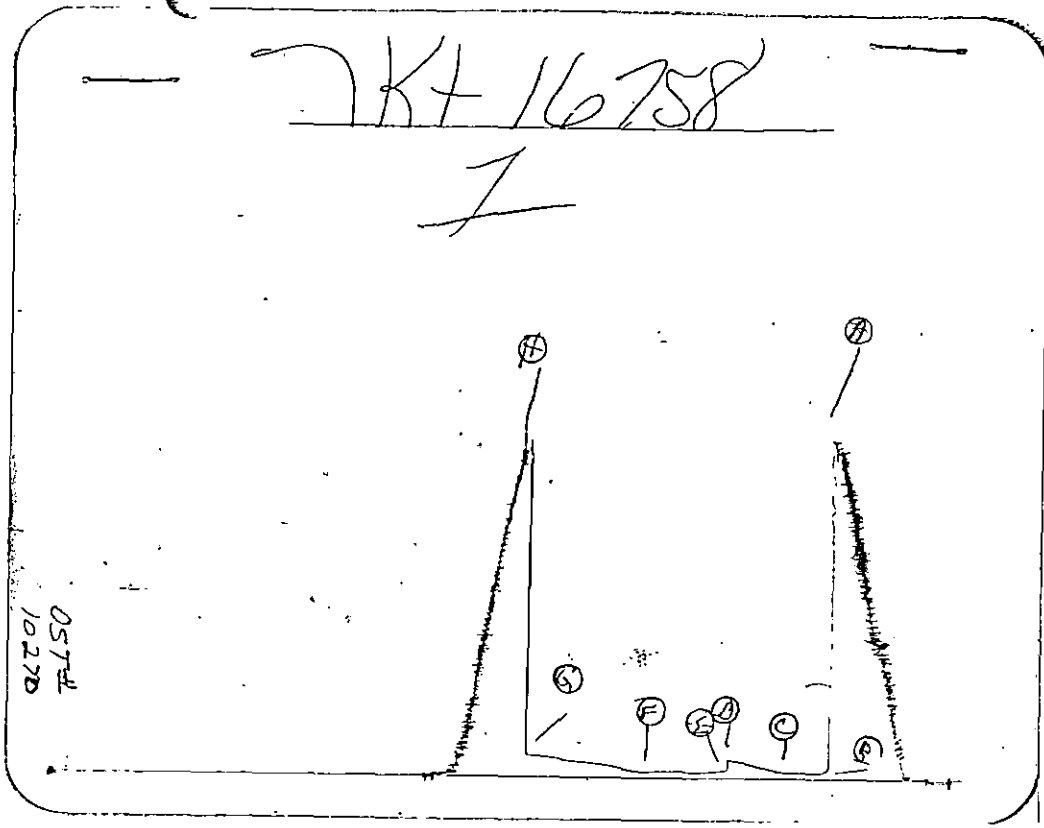


Home Office:

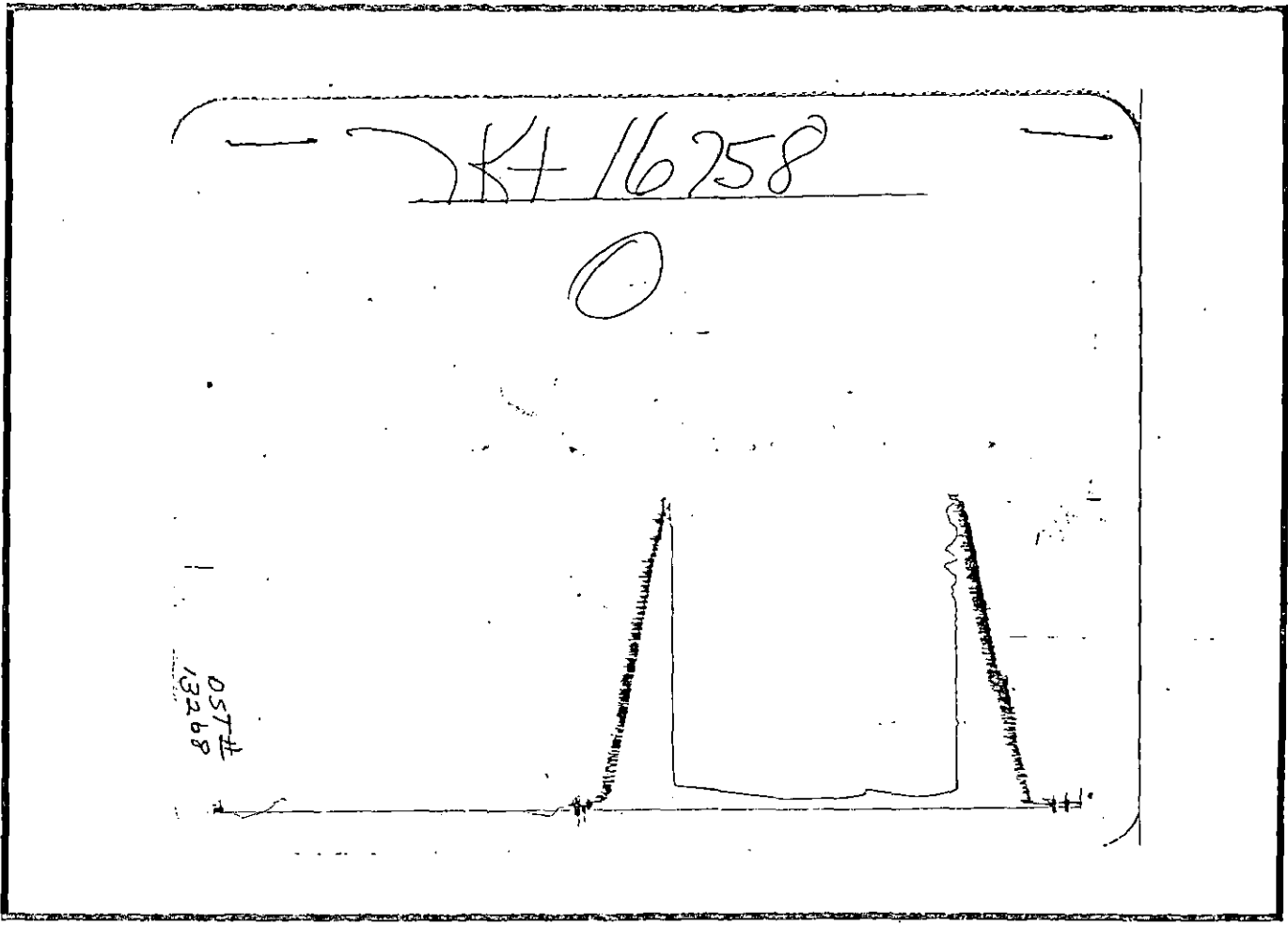
Wichita, Kansas 67201

P.O. Box 1599

Phone (316) 262-5861



Inside Recorder



Outside Recorder

ORIGINAL

15-185-22743-0000

WESTERN TESTING CO. INC.
SUBSURFACE PRESSURE SURVEY

DATE	: 12-16-90	TICKET	: 16758
CUSTOMER	: COLUMBIAN SERVICES CORP.	LEASE	: ESTHER ALLEN
WELL	: 1-34 TEST: 3	GEOLOGIST	: BURK
ELEVATION	: 1840 K.B.	FORMATION	: CONG. SD. / VIOLA
SECTION	: 34	TOWNSHIP	: 22S
RANGE	: 12W COUNTY : STAFFORD	STATE	: KANSAS
GAUGE SN#	: 10270 RANGE : 4150	CLOCK	: 12

INTERVAL FROM	: 3556	TO	: 3608	TOTAL DEPTH	: 3608
DEPTH OF SELECTIVE ZONE	:				
PACKER DEPTH	: 3551	SIZE	: 6.63		
PACKER DEPTH	: 3556	SIZE	: 6.63		
PACKER DEPTH	:	SIZE	:		
PACKER DEPTH	:	SIZE	:		

DRILLING CON.	: H-30 RIG 7		
MUD TYPE	: CHEMICAL	VISCOSITY	: 47
WEIGHT	: 9.2	WATER LOSS (CC)	: 11
CHLORIDES (PPM)	: 7700		
JARS-MAKE	:	SERIAL NUMBER	:
DID WELL FLOW ?	: NO	REVERSED OUT ?	: NO

DRILL COLLAR LENGTH	:	0	FT	I.D. inch	:	0.00
WEIGHT PIPE LENGTH	:	0	FT	I.D. inch	:	0.00
DRILL PIPE LENGTH	:	3536	FT	I.D. inch	:	3.80
TEST TOOL LENGTH	:	20	FT	TOOL SIZE	:	5.50
ANCHOR LENGTH	:	52	FT	ANCHOR SIZE	:	5.50
SURFACE CHOKE SIZE	:	.75	IN	BOTTOM CHOKE SIZE	:	.75
MAIN HOLE SIZE	:	7.875	IN	TOOL JOINT SIZE	:	4.5XH

BLOW COMMENT #1 : INITIAL FLOW PERIOD WEAK-BUILDING TO A
 BLOW COMMENT #2 : STRONG BLOW IN 20 MINUTES.
 BLOW COMMENT #3 : FINAL FLOW PERIOD WEAK-BUILDING TO A
 BLOW COMMENT #4 : STRONG BLOW IN 5 MINUTES.

ORIGINAL

15-185-22 743-0000

RECOVERED : 30 FT OF: OIL & GAS CUT MUD-4%OIL;3%GAS;93%MUD

Total Barrels Fluid = 0.42
 Total Fluid Prod Rate = 6.73 BFPD
 Indicated Oil Rate = 0.27 BOPD
 Indicated Wtr Rate = 0.63 BWPD
 Corrected Oil Rate = 0.60 BOPD
 Corrected Wtr Rate = 1.39 BWPD

REMARK 1 :
 REMARK 2 : RECOVERED 510 FT. OF GAS ABOVE FLUID
 REMARK 3 :
 REMARK 4 :

SET PACKER(S) :	7:30 A.M.	TIME STARTED OFF BOTTOM :	11:15 A.M.
WELL TEMPERATURE :	108		
INITIAL HYDROSTATIC PRESSURE		(A)	1792
INITIAL FLOW PERIOD MIN:	30	(B)	42 PSI TO (C) : 42
INITIAL CLOSED IN PERIOD MIN:	45	(D)	106
FINAL FLOW PERIOD MIN:	60	(E)	40 PSI TO (F) : 41
FINAL CLOSED IN PERIOD MIN:	90	(G)	124
FINAL HYDROSTATIC PRESSURE		(H)	1760

C ORIGINAL C

15-185-22743-0000

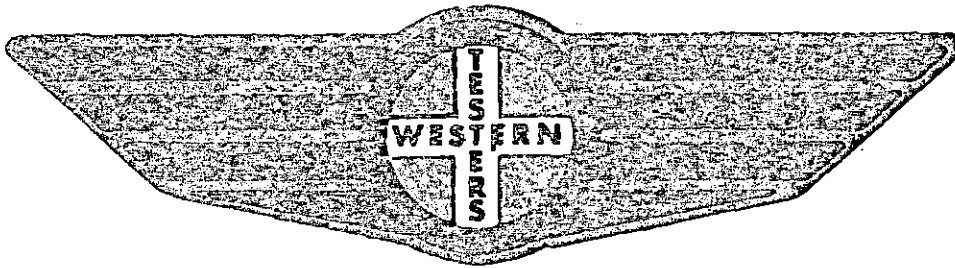
COMPANY COLUMBIAN SERVICES CORP LEASE & WELL NO. ESTHER ALLEN # 1-34 SEC. 34 TWP. 22S RGE. 12W TEST NO. 4 DATE 12-16-90

FORMATION

TEST

REPORT

LEASE FILE



Home Office:

Wichita, Kansas 67201

P.O. Box 1599

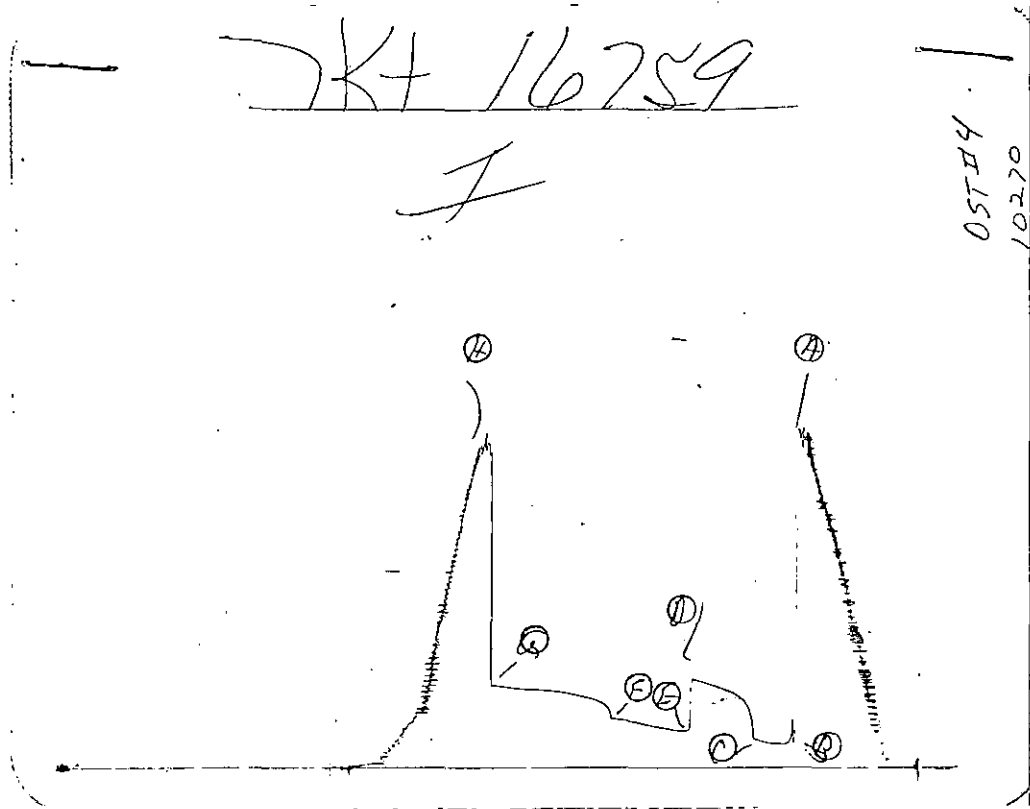
Phone (316) 262-5861

ORIGINAL

KT 16759

I

OST #4
102.70

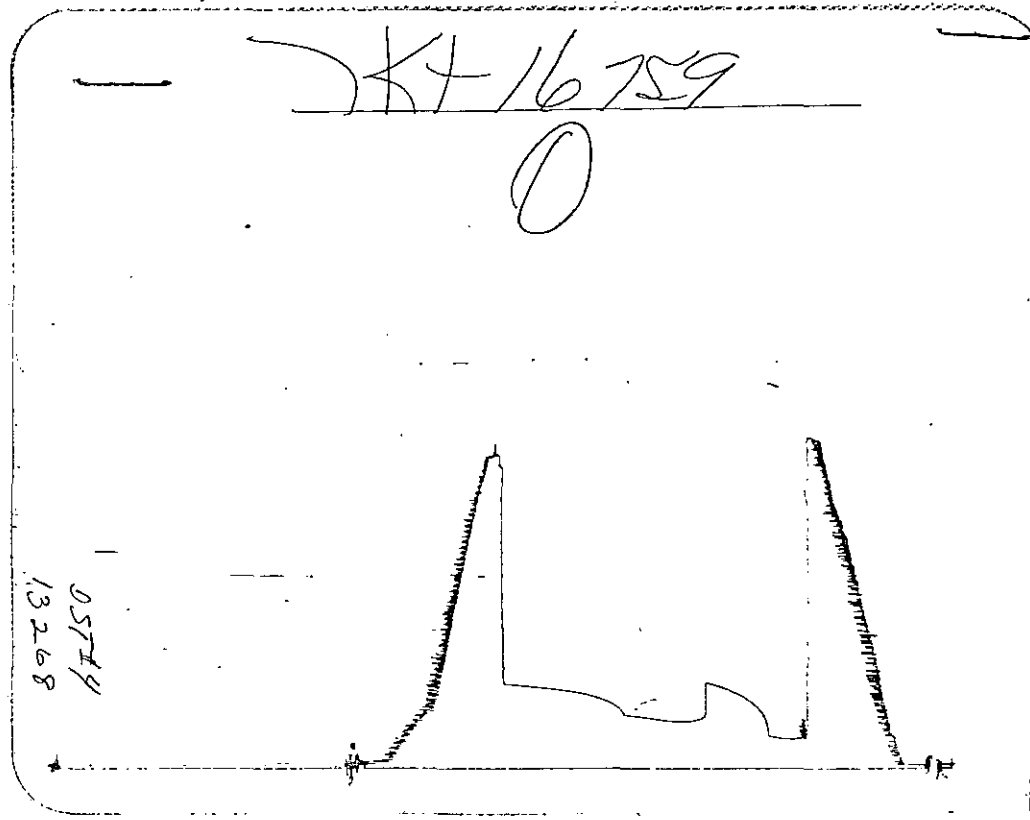


Inside Recorder

KT 16759

O

OST #4
132.68



Outside Recorder

ORIGINAL
WESTERN TESTING CO. INC.
SUBSURFACE PRESSURE SURVEY

DATE	: 12-16-90	TICKET	: 16759
CUSTOMER	: COLUMBIAN SERVICES CORP.	LEASE	: ESTHER ALLEN
WELL	: 1-34 TEST: 4	GEOLOGIST	: BURK
ELEVATION	: 1840 K.B.	FORMATION	:
SECTION	: 34	TOWNSHIP	: 22S
RANGE	: 12W COUNTY : STAFFORD	STATE	: KANSAS
GAUGE SN#	: 10270 RANGE : 4150	CLOCK	: 12

INTERVAL FROM	: 3605	TO	: 3650	TOTAL DEPTH	: 3650
DEPTH OF SELECTIVE ZONE	:				
PACKER DEPTH	: 3600	SIZE	: 6.63		
PACKER DEPTH	: 3605	SIZE	: 6.63		
PACKER DEPTH	:	SIZE	:		
PACKER DEPTH	:	SIZE	:		

DRILLING CON.	: H-30 RIG 7		
MUD TYPE	: CHEMICAL	VISCOSITY	: 55
WEIGHT	: 9.2	WATER LOSS (CC)	: 7.2
CHLORIDES (PPM)	: 11000		
JARS-MAKE	:	SERIAL NUMBER	:
DID WELL FLOW ?	: NO	REVERSED OUT ?	: NO

DRILL COLLAR LENGTH	: 0	FT	I.D. inch	: 0.00
WEIGHT PIPE LENGTH	: 0	FT	I.D. inch	: 0.00
DRILL PIPE LENGTH	: 3585	FT	I.D. inch	: 3.80
TEST TOOL LENGTH	: 20	FT	TOOL SIZE	: 5.50
ANCHOR LENGTH	: 45	FT	ANCHOR SIZE	: 5.50
SURFACE CHOKE SIZE	: .75	IN	BOTTOM CHOKE SIZE	: .75
MAIN HOLE SIZE	: 7.875	IN	TOOL JOINT SIZE	: 4.5XH

BLOW COMMENT #1 : INITIAL FLOW PERIOD STRONG BLOW IN 2 MINUTES.
 BLOW COMMENT #2 : FINAL FLOW PERIOD WEAK-BUILDING TO A GOOD BLOW.
 BLOW COMMENT #3 : 1 INCH TO 8 INCH BLOW.
 BLOW COMMENT #4 :

ORIGINAL

RECOVERED : 205 FT OF: SLIGHTLY OIL CUT WATERY MUD
 RECOVERED : 0 FT OF: 1%OIL;40%WATER;59%MUD
 RECOVERED : 300 FT OF: WATER
 RECOVERED : 0 FT OF: CHLORIDES 24000 P.P.M.

Total Barrels Fluid = 7.08
 Total Fluid Prod Rate = 120.00 BFPD
 Indicated Oil Rate = 0.49 BOPD
 Indicated Wtr Rate = 90.77 BWPD
 Corrected Oil Rate = 84.97 BOPD

REMARK 1 :
 REMARK 2 : RECOVERED 90 FT. OF GAS ABOVE FLUID
 REMARK 3 : PLUGGING ON INITIAL FLOW PERIOD
 REMARK 4 :

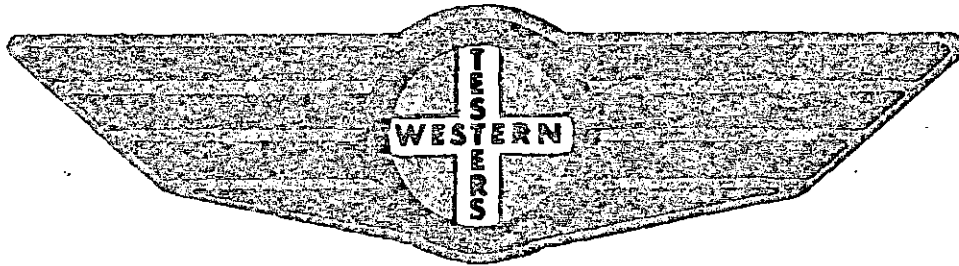
SET PACKER(S) : 10:35 P.M. TIME STARTED OFF BOTTOM : 2:20 A.M.
 WELL TEMPERATURE : 109
 INITIAL HYDROSTATIC PRESSURE (A) 1815
 INITIAL FLOW PERIOD MIN: 30 (B) 134 PSI TO (C) : 156
 INITIAL CLOSED IN PERIOD MIN: 45 (D) 488
 FINAL FLOW PERIOD MIN: 55 (E) 200 PSI TO (F) : 268
 FINAL CLOSED IN PERIOD MIN: 90 (G) 448
 FINAL HYDROSTATIC PRESSURE (H) 1746

FORMATION

TEST

REPORT

LEASE FILE



Home Office:

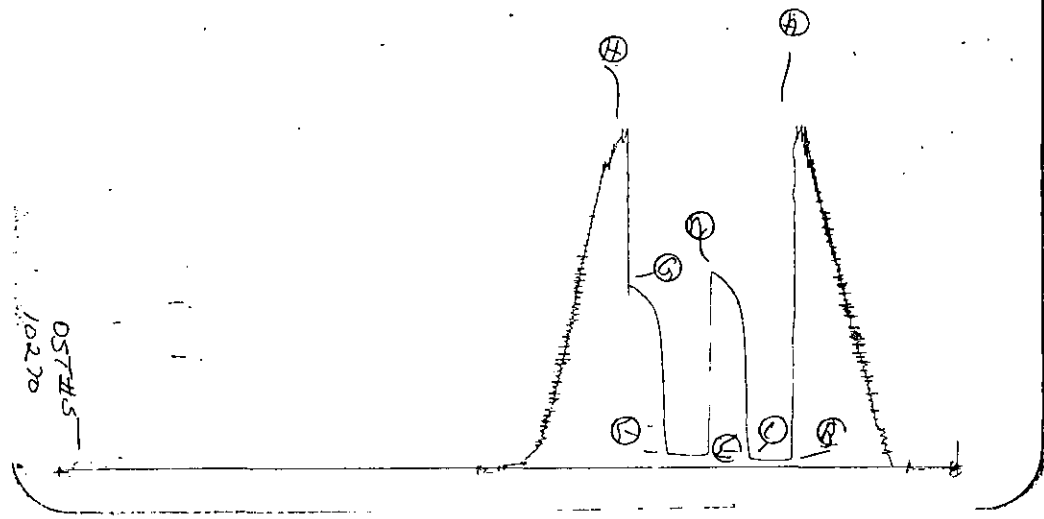
Wichita, Kansas 67201

P.O. Box 1599

Phone (316) 262-5861

ORIGINAL

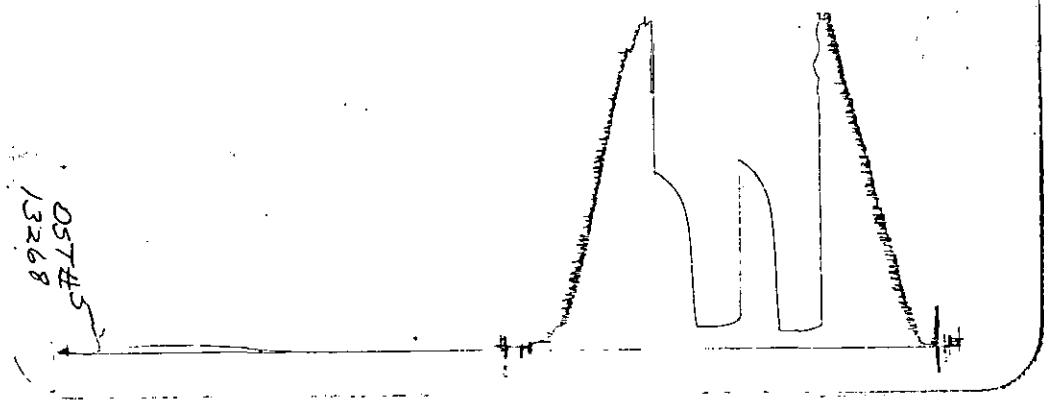
KT 16760
I



Inside Recorder

KT 16760

0



Outside Recorder

ORIGINAL

WESTERN TESTING CO. INC. SUBSURFACE PRESSURE SURVEY

DATE	:	12-17-90	TICKET	:	16760
CUSTOMER	:	COLUMBIAN SERVICES CORP.	LEASE	:	ESTHER ALLEN
WELL	:	1-34 TEST: 5	GEOLOGIST	:	BURK
ELEVATION	:	1840 K.B.	FORMATION	:	CONGLOMERATE
SECTION	:	34	TOWNSHIP	:	22S
RANGE	:	12W COUNTY: STAFFORD	STATE	:	KANSAS
GAUGE SN#	:	10270 RANGE : 4150	CLOCK	:	12

INTERVAL FROM	:	3644	TO	:	3712	TOTAL DEPTH	:	3712
DEPTH OF SELECTIVE ZONE	:							
PACKER DEPTH	:	3639	SIZE	:	6.63			
PACKER DEPTH	:	3644	SIZE	:	6.63			
PACKER DEPTH	:		SIZE	:				
PACKER DEPTH	:		SIZE	:				

DRILLING CON.	:	H-30 RIG 7			
MUD TYPE	:	CHEMICAL	VISCOSITY	:	57
WEIGHT	:	9.1	WATER LOSS (CC)	:	10
CHLORIDES (PPM)	:	9000			
JARS-MAKE	:		SERIAL NUMBER	:	
DID WELL FLOW ?	:	NO	REVERSED OUT ?	:	NO

DRILL COLLAR LENGTH	:	0	FT	I.D. inch	:	0.00
WEIGHT PIPE LENGTH	:	0	FT	I.D. inch	:	0.00
DRILL PIPE LENGTH	:	3624	FT	I.D. inch	:	3.80
TEST TOOL LENGTH	:	20	FT	TOOL SIZE	:	5.50
ANCHOR LENGTH	:	68	FT	ANCHOR SIZE	:	5.50
SURFACE CHOKE SIZE	:	.75	IN	BOTTOM CHOKE SIZE	:	.75
MAIN HOLE SIZE	:	7.875	IN	TOOL JOINT SIZE	:	4.5XH

BLOW COMMENT #1 : INITIAL FLOW PERIOD WEAK BLOW THROUGHOUT
 BLOW COMMENT #2 : 1 INCH TO 2 INCH BLOW.
 BLOW COMMENT #3 : FINAL FLOW PERIOD WEAK BLOW THROUGHOUT
 BLOW COMMENT #4 : 1 INCH TO 1 1/2 INCH BLOW.

ORIGINAL

RECOVERED	:	135	FT	OF:	MUDDY WATER-40%MUD;60%WATER
RECOVERED	:	0	FT	OF:	W/SHOW OF OIL THROUGHOUT
RECOVERED	:	0	FT	OF:	CHLORIDES 19000 P.P.M.
RECOVERED	:	0	FT	OF:	LESS THAN 1% OIL SHOW

Total Barrels Fluid	=	1.89
Total Fluid Prod Rate	=	45.45 BFPD
Indicated Wtr Rate	=	27.27 BWPD

REMARK 1 :
 REMARK 2 :
 REMARK 3 :
 REMARK 4 :

SET PACKER(S) : 6:30 P.M.

TIME STARTED OFF BOTTOM : 8:30 P.M.

WELL TEMPERATURE : 112

INITIAL HYDROSTATIC PRESSURE

INITIAL FLOW PERIOD MIN: 30

(A) 1813

PSI TO (C) : 53

INITIAL CLOSED IN PERIOD MIN: 30

(B) 46

(D) 1065

FINAL FLOW PERIOD MIN: 30

(E) 75

PSI TO (F) : 80

FINAL CLOSED IN PERIOD MIN: 30

(G) 999

FINAL HYDROSTATIC PRESSURE

(H) 1794

TELEPHONE:
AREA CODE 913 483-2627

ALLIED CEMENTING COMPANY, INC.

P. O. BOX 31
RUSSELL, KANSAS 67665

15-185-22743-0000

ORIGINAL

TO: H-30 Drilling Co. Inc.

INVOICE NO. 58346

251 N. Water #10

PURCHASE ORDER NO. _____

Wichita, Kansas 67202

LEASE NAME Evva Allen-1-34

DATE Dec. 18, 1990

SERVICE AND MATERIALS AS FOLLOWS:

Common 78 sks @\$5.25	\$ 409.50	
Pozmix 52 sks @\$2.25	117.00	
Gel 8 sks @\$6.75	<u>54.00</u>	\$ 580.50

Handling 130 sks @\$1.00	130.00	
Mileage (25) @\$0.04c per sk per mi	138.25	
Plugging	380.00	
M1 @\$2.00 pmp. trk.	<u>50.00</u>	698.25

RECEIVED
KANSAS CORPORATION COMMISSION

Total \$ 1,278.75

50 sks @730'
50 sks. @295'
10 sks. @ 40'
15 sks. in R. H.

MAR 5 1992

CONSERVATION DIVISION
WICHITA, KS

THANK YOU

RECEIVED
MAR 2 1992

All Prices Are Net, Payable 30 Days Following Date of Invoice. 1½% Charged Thereafter.

Phone 913-483-2627, Russell, Kansas
 Phone 316-793-5861, Great Bend, Kansas

ORIGINAL

Phone Plainville 913-434-2812
 Phone Ness City 913-798-3843

New

ALLIED CEMENTING CO., INC.

No 6321

Home Office P. O. Box 91

Russell, Kansas 67665

Date	Dec 18 90	Sec	34	Twp	22	Range	12	Called Out	3 PM	On Location	3:40 PM	Job Start	4:30 PM	Finish	
Case	Est. # 1111	Well No.	1-34	Dulson 12/32-140				County	Stepford	State	Kansas				
Contractor	H-30 Drilling Co											Owner	Columbia Sevice Corp.		

Type Job	Plug to Abandon Rotam	
Cole Size	7 7/8	T.D. 3750
Csg.	8 5/8	Depth 275'
Log Size		Depth
Drill Pipe		Depth
Tool		Depth
Cement Left in Csg.	RECEIVED KANSAS CORPORATION COMMISSION	
Press Max.	Minimum	
Leas Line	MAR 5 1992	
Ref.	CONSERVATION DIVISION WICHITA, KS	
	EQUIPMENT	

To Allied Cementing Co., Inc.
 You are hereby requested to rent cementing equipment and furnish cementer and helper to assist owner or contractor to do work as listed.

Charge To H-30 Drilling Co Inc.
 Street 251 N. Water Suite #10
 City Wichita State KS 67202

The above was done to satisfaction and supervision of owner agent or contractor

Purchase Order No. *Alan Leslie*
 CEMENT

Amount Ordered *130* ~~60~~ *60/40 60 bag*

Emptrk	No. 195	Cementer	NND
		Helper	
Emptrk	No.	Cementer	
		Helper	
Emptrk	101	Driver	Vancey
Emptrk		Driver	

Consisting of			
Common	78	5.25	409.50
Poz. Mix	52	2.25	117.00
Gel.	8	6.75	54.00
Chloride			
Quickset			

DEPTH of Job	330	
Reference:	Pump at K	380.00
	25 Mileage	50.00
	Sub Total	
	Tax	
	Total	430.00

Handling	130	1.00	130.00
Milage	25		138.25
	Sub Total		
	Total		848.75

Remarks: 3750 to 750 Drilling Mud
 50 SKs @ 730
 50 SKs @ 395
 10 SKs @ 40'
 15 SKs Rathole

Floating Equipment
 (Left Cement for with Well)

Total \$ 1278.75
 Disc - 255.75
 \$ 1023.00

TELEPHONE:
AREA CODE 913 483-2627

ALLIED CEMENTING COMPANY INC.

P. O. BOX 31
RUSSELL, KANSAS 67665

ORIGINAL

15-185-22743-0000

TO: H-30 Drilling Inc.
251 N. Water #10
Wichita, Kansas 67202

INVOICE NO. 59253
PURCHASE ORDER NO. _____
LEASE NAME Ester Allen 1-34
DATE Dec. 10, 1990

SERVICE AND MATERIALS AS FOLLOWS:

Common 153 sks @\$5.25	\$ 803.25	
Pozmix 102 sks @\$2.25	229.50	
Chloride 8 sks @\$21.00	<u>168.00</u>	\$ 1,200.75
Handling 320 sks @\$1.00	320.00	
Mileage (25) @\$0.04c per sk per mi	320.00	
Surface	380.00	
Mileage (25) @\$2.00 pmp	50.00	
.1 plug	<u>42.00</u>	<u>1,112.00</u>
		Total \$ 2,312.75

RECEIVED
KANSAS CORPORATION COMMISSION

MAR 5 1992

Cement did not circ.

CONSERVATION DIVISION
WICHITA, KS

THANK YOU

All Prices Are Net, Payable 30 Days Following Date of Invoice. 1½% Charged Thereafter.

15-185-22743-0000

ORIGINAL

Phone 913-483-2627, Russell, Kansas
 Phone 316-793-5861, Great Bend, Kansas

Phone Plainville 913-434-2812
 Phone Ness City 913-798-3843

ALLIED CEMENTING CO., INC.

No. 6057

Home Office P. O. Box 31

Russell, Kansas 67665

New

Date	Sec	Twp	Range	Called Out	On Location	Job Start	Finish
12-10-90	34	22	12	6:30 P.M.	9:30 P.M.	10:10 P.M.	10:40 P.M.
Case	Well No.		Location		County	State	
Esther Allen	1-34		Hudson LE, Is, elimb		Shelby	KS	

Contractor	#7
Type Job	Surface Pipe
Hole Size	12 1/4 T.D. 275'
Log	8 5/8 Depth 210'
Log Size	Depth
Drill Pipe	Depth
Tool	Depth
Cement Left in Csg.	15' Shoe Joint
Press Max.	RECEIVED Minimum
Leas Line	KANSAS CORPORATION COMMISSION 16 1/2 bbls.

Owner *Same*
 To Allied Cementing Co., Inc.
 You are hereby requested to rent cementing equipment and furnish cementer and helper to assist owner or contractor to do work as listed.

Charge To *H-30 Drilling Inc.*
 Street *251 N. Water Suite #10*
 City *Wichita* State *Ks. 67202*
 The above was done to satisfaction and supervision of owner agent or contractor

Purchase Order No.
 X *M.H. Thompson*
 CEMENT

MAR 5 1992

EQUIPMENT CONSERVATION DIVISION

No.	City	Name
#120	WICHITA, KS	Steve Kopper
		Helper
		Norman
No.		
#122		Kenny
		Helper
		Yancy
		Driver
		Driver

Amount Ordered	220	60/40	3%acc	2%ogel
Order for	Consisting of 100cks 60/40 3%acc 2%ogel (used 35cks)			
Common	153		5.25	803.25
Poz. Mix	102		2.25	229.50
Gel.	5		6.75	NIC
Chloride	8		21.00	168.00
Quickset				

Handling	320	1.00	320.00
Mileage	25		320.00
Sub Total			1840.75
Total			1840.75

EPH of Job	Reference:	Amount
	Pump Truck	380.00
	Plug	42.00
	25 Mileage	50.00
	Sub Total	
	Tax	
	Total	472.00

Floating Equipment
 Thank You!
 Total \$ 2312.75
 Disc - 462.55
 \$ 1850.20

Remarks: Cement Did Not Circulate.
 Ordered 100cks 60/40 3%acc 2%ogel
 and circulated w/1"
 1" spool bottom circ.