

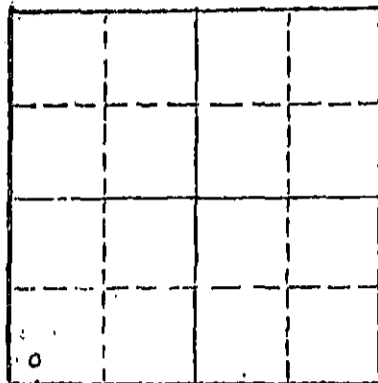
STATE OF KANSAS
STATE CORPORATION COMMISSION

Form CP-4

Give All Information Completely
Make Required Affidavit
Mail or Deliver Report to:
Conservation Division
State Corporation Commission

WELL PLUGGING RECORD

P. O. Box 17027
Wichita, Kansas 67217
NORTH



Locate well correctly on above
Section Plot

Pawnee County, Sec. 34 Twp. 22 Rge. 15 W (E) (W)
Location as "NE/CNW/SW" or footage from lines SW SW SW
Lease Owner Et-al, Inc.
Lease Name Guffey #1 Well No.
Office Address Oklahoma City, Oklahoma 73106
Character of Well (completed as Oil, Gas or Dry Hole) Gas
Date well completed 11/14/67 19
Application for plugging filed 8/13/74 19
Application for plugging approved 8/14/74 19
Plugging commenced 10/22/74 19
Plugging completed 11/8/74 19
Reason for abandonment of well or producing formation depleted
If a producing well is abandoned, date of last production 6/12/74 19
Was permission obtained from the Conservation Division or its agents before plugging was commenced? yes

Name of Conservation Agent who supervised plugging of this well Massey
Producing formation Howard ls Depth to top 2965 Bottom 2978 Total Depth of Well 3126 Feet
Show depth and thickness of all water, oil and gas formations.

OIL, GAS OR WATER RECORDS

CASING RECORD

FORMATION	CONTENT	FROM	TO	SIZE	PUT IN	PULLED OUT
Foraker	Gas & wtr	2522	2532	9-5/8	645	none
Howard	Gas & Wtr	2965	2978	4 1/2"	3124	1761'

Describe in detail the manner in which the well was plugged, indicating where the mud fluid was placed and the method or methods used in introducing it into the hole. If cement or other plugs were used, state the character of same and depth placed, from _____ feet to _____ feet for each plug set.

Checked hole to 3126', ran sand to 2950' and ran 3 sacks cement.
Loaded hole with water, shot pipe at 2226', 2144', ~~2020'~~ 1896', 1746', pulled 53 joints of 4 1/2" casing. Pumped 3 sacks hulls, 20 sacks gel and 130 sacks 6% poz mix.

PLUGGING COMPLETE.

12-11-74
RECEIVED
STATE CORPORATION COMMISSION
JUL 1 1974
CONSERVATION DIVISION
Wichita, Kansas

(If additional description is necessary, use BACK of this sheet)
Name of Plugging Contractor KNIGHT CASING PULLING CO., INC.
Address CHASE, KANSAS

STATE OF KANSAS COUNTY OF RICE, ss.
NOEL J. KNIGHT (employee of owner) or (owner or operator) of the above-described well, being first duly sworn on oath, says: That I have knowledge of the facts, statements, and matters herein contained and the log of the above-described well as filed and that the same are true and correct. So help me God.

(Signature) Noel Knight
CHASE, KANSAS (Address)

Subscribed and sworn to before me this 6th day of December, 1974

My commission expires
MARGARET MELCHER
NOTARY PUBLIC
Rice County, Kansas
My Commission Expires
Feb. 15, 1975

Margaret Melcher
Notary Public.

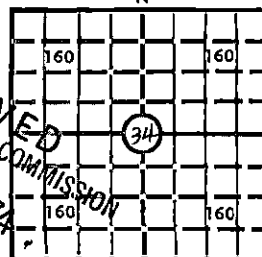
KANSAS DRILLERS LOG

S. 34 T. 22S R. 15W E
W

Loc. SW-SW-SW

County Pawnee

640 Acres
N



DF _____ KB 2006

STATE RECEIVED
CONSERVATION DIVISION
AUG 4 1974
Wichita, Kansas

API No. 15 — 145 — 00288-0001
County Number

Operator
Et Al, Inc.

Address
119 Cameron Bldg., Oklahoma City, Oklahoma 73102

Well No. 1 Lease Name **Guffey**

Footage Location
330 feet from XNU (S) line 330 feet from YEX (W) line

Principal Contractor **Cookie Drilling Co.** Geologist **None - Washdown**

Spud Date **October 23, 1967** Total Depth **3126'** P.B.T.D. **3056'**

Date Completed **November 14, 1967** Oil Purchaser **Gas to Kansas-Nebraska**

CASING RECORD

Report of all strings set — surface, intermediate, production, etc.

Purpose of string	Size hole drilled	Size casing set (in O.D.)	Weight lbs./ft.	Setting depth	Type cement	Sacks	Type and percent additives
Surface	12-1/4	9-7/8"		645	Old hole -	Unknown	
Production	8-3/4	4-1/2"	9.5#	3124	Pozmix A	300	15% salt 2% gel

LINER RECORD

PERFORATION RECORD

Top, ft.	Bottom, ft.	Sacks cement	Shots per ft.	Size & type	Depth interval
			3	3/8" Jet	a 3078-84
TUBING RECORD			(Squeezed)	3/8" Jet	b 2524-30
			4(W/100 Sk)	3/8" Jet	c 2969-76
Size 2" EUE	Setting depth 3000'	Packer set Bridge Plug @ 3056'	3	3/8" Jet	

ACID, FRACTURE, SHOT, CEMENT SQUEEZE RECORD

Amount and kind of material used	Depth interval treated
250 gal. 15% MCA followed by 500 gal. 15% Reg.	2969-76' Howard
a-set Bridge plug at 3056' above these perforations	
b-Squeezed these perforations before completing in perforations at c.	

INITIAL PRODUCTION

Date of first production November 14, 1967	Producing method (flowing, pumping, gas lift, etc.) 4 pt. test Flowing
RATE OF PRODUCTION PER 24 HOURS	Oil _____ Gas 2,100,000 MCF Water _____ Gas-oil ratio _____ CFPB
Disposition of gas (vented, used on lease or sold) Kansas-Nebraska Natural Gas Co., Inc.	Producing interval (s) Howard Line 2969-76'

INSTRUCTIONS: As provided in KCC Rule 82-2-125, within 90 days after completion of a well, one completed copy of this Drillers Log shall be transmitted to the State Geological Survey of Kansas, 4150 Monroe Street, Wichita, Kansas 67209. Copies of this form are available from the Conservation Division, State Corporation Commission, 3830 So. Meridian (P.O. Box 17027), Wichita, Kansas 66217. Phone AC 316-522-2206. If confidential custody is desired, please note Rule 82-2-125. Drillers Logs will be on open file in the Oil and Gas Division, State Geological Survey of Kansas, Lawrence, Kansas 66044.

Operator

ET AL, INC.

DESIGNATE TYPE OF COMP.: OIL, GAS, DRY HOLE, SWDW, ETC.:

Gas

Well No.

1

Lease Name

Guffey

S 34 T22S R 15W^E_W

WELL LOG

Show all important zones of porosity and contents thereof; corad intervals, and all drill-stem tests, including depth interval tested, cushion used, time tool open, flowing and shut-in pressures, and recoveries.

SHOW GEOLOGICAL MARKERS, LOGS RUN, OR OTHER DESCRIPTIVE INFORMATION.

FORMATION DESCRIPTION, CONTENTS, ETC.	TOP	BOTTOM	NAME	DEPTH
Washed down old hole, Phillips #1 Crinda Lime Gas and water Lime Gas Lime - no porosity	2522 2965	2532 2978	Foraker Howard Topeka	2522 2965 3044

USE ADDITIONAL SHEETS, IF NECESSARY, TO COMPLETE WELL RECORD.

Date Received

Dale Rayburn
Signature

President

Title

August 13, 1974

Date