

ORIGINAL

STATE CORPORATION COMMISSION OF KANSAS
OIL & GAS CONSERVATION DIVISION
WELL COMPLETION FORM
ACO-1 WELL HISTORY
DESCRIPTION OF WELL AND LEASE

API NO. 15- 185-22,710 -0000

Operator: License # 5228

Name: Parrish Corporation

Address 100 So. Market #200

City/State/Zip Wichita, KS 67202

Purchaser: none

Operator Contact Person: Lloyd K. Parrish Jr.

Phone (316) 263-8726

Contractor: Name: H-30 Drilling, Inc.

License: 5107

Wellsite Geologist: Jeffery Burk

Designate Type of Completion
 New Well Re-Entry Workover

Oil SWD SIOW Temp. Abd.
 Gas ENHR SIGW
 Dry Other (Core, WSW, Expl., Cathodic, etc)

If Workover/Re-Entry: old well info as follows:

Operator: _____

Well Name: _____

Comp. Date _____ Old Total Depth _____

Deepening Re-perf. Conv. to Inj/SWD
 Plug Back PBTD
 Casing/led Docket No. _____
 Dual Completion Docket No. _____
 Other (SWD or Inj?) Docket No. _____

9-23-90 9-30-90 9-30-90
Spud Date Date Reached TD Completion Date

County Stafford

-W/2 -SE ^{NW} SE Sec. 32 Twp. 22 Rge. 11 E

1980 Feet from S/4 (circle one) Line of Section

1650 Feet from E/4 (circle one) Line of Section

Footages Calculated from Nearest Outside Section Corner:
NE, SE, NW or SW (circle one)

Lease Name Murphy Well # 1-32

Field Name Richardson

Producing Formation none

Elevation: Ground 1806 KB 1811

Total Depth 3650 PBTD _____

Amount of Surface Pipe Set and Cemented at 272 Feet

Multiple Stage Cementing Collar Used? Yes No

If yes, show depth set _____ Feet

If Alternate II completion, cement circulated from _____

feet depth to _____ w/ _____ sx cmt.

Drilling Fluid Management Plan *ATI DVA*
(Data must be collected from the Reserve Pit)

Chloride content 9000 ppm Fluid volume 400 bbls

Dewatering method used evaporation

Location of fluid disposal if hauled offsite: _____

Operator Name _____

Lease Name _____ License No. _____

Quarter Sec. Twp. S Rng. E/W

County _____ Docket No. _____

INSTRUCTIONS: An original and two copies of this form shall be filed with the Kansas Corporation Commission, 200 Colorado Derby Building, Wichita, Kansas 67202, within 120 days of the spud date, recompletion, workover or conversion of a well. Rule 82-3-130, 82-3-106 and 82-3-107 apply. Information on side two of this form will be held confidential for a period of 12 months if requested in writing and submitted with the form (see rule 82-3-107 for confidentiality in excess of 12 months). One copy of all wireline logs and geologist well report shall be attached with this form. ALL CEMENTING TICKETS MUST BE ATTACHED. Submit CP-4 form with all plugged wells. Submit CP-111 form with all temporarily abandoned wells.

All requirements of the statutes, rules and regulations promulgated to regulate the oil and gas industry have been fully complied with and the statements herein are complete and correct to the best of my knowledge.

Signature *Lloyd K Parrish Jr*

Title President Date 11-11-91

Subscribed and sworn to before me this 11th day of November 19 91.

Notary Public *Deborah R. Haddock*
Deborah R. Haddock

Date Commission Expires April 24, 1993

DEBORAH R. HADDOCK
NOTARY PUBLIC
STATE OF KANSAS
My Appt. Exp. Apr. 24, 1993

K.C.C. OFFICE USE ONLY
F Letter of Confidentiality Attached
C Wireline Log Received
C Geologist Report Received
RECEIVED
STATE CORPORATION COMMISSION
KCC SWD/Rep NGA
KGS Plug Other
NOV 12 1991
11-12-91
Wichita, Kansas
Form ACO-1 (7-91)

Operator Name Parrish Corporation Lease Name Murphy Well # 1-32

Sec. 32 Twp. 22 Rge. 11
 East
 West

County Stafford

INSTRUCTIONS: Show important tops and base of formations penetrated. Detail all cores. Report all drill stem tests giving interval tested, time tool open and closed, flowing and shut-in pressures, whether shut-in pressure reached static level, hydrostatic pressures, bottom hole temperature, fluid recovery, and flow rates if gas to surface during test. Attach extra sheet if more space is needed. Attach copy of log.

Drill Stem Tests Taken Yes No
 (Attach Additional Sheets.)

Samples Sent to Geological Survey Yes No

Cores Taken Yes No

Electric Log Run Yes No
 (Submit Copy.)

List All E.Logs Run:
 Dual Induction Laterolog
 Compensated Density
 Dual Spaced Neutron

Log Formation (Top), Depth and Datum Sample

Name	Top	Datum
Anhydrite	539	1272
Base Anhydrite	558	1253
Heebner	3071	-1206
Brown Lime	3220	-1409
Lansing	3246	-1435
Base Kans.City	3478	-1667
Viola	3522	-1711
RTD	3650	-1839

CASING RECORD New Used

Report all strings set-conductor, surface, intermediate, production, etc.

Purpose of String	Size Hole Drilled	Size Casing Set (In O.D.)	Weight Lbs./Ft.	Setting Depth	Type of Cement	# Sacks Used	Type and Percent Additives
Surface	12 1/4	8 5/8	22	272	60/40 Poz	272	3% CaCl 2% Gel

ADDITIONAL CEMENTING/SQUEEZE RECORD

Purpose:	Depth Top Bottom	Type of Cement	#Sacks Used	Type and Percent Additives
<input type="checkbox"/> Perforate				
<input type="checkbox"/> Protect Casing				
<input type="checkbox"/> Plug Back TD				
<input type="checkbox"/> Plug Off Zone				

Shots Per Foot	PERFORATION RECORD - Bridge Plugs Set/Type Specify Footage of Each Interval Perforated	Acid, Fracture, Shot, Cement Squeeze Record (Amount and Kind of Material Used) Depth

TUBING RECORD

Size	Set At	Packer At	Liner Run <input type="checkbox"/> Yes <input type="checkbox"/> No

Date of First, Resumed Production, SWD or Inj. _____ Producing Method Flowing Pumping Gas Lift Other (Explain) _____

Estimated Production Per 24 Hours	Oil Bbls.	Gas Mcf	Water Bbls.	Gas-Oil Ratio	Gravity

Disposition of Gas: Vented Sold Used on Lease (If vented, submit ACO-18.)

METHOD OF COMPLETION

Open Hole Perf. Dually Comp. Commingled Other (Specify) _____

Production Interval none _____

ORIGINAL

WESTERN TESTING CO. INC.
SUBSURFACE PRESSURE SURVEY

DATE	:	9-27-90	TICKET	:	16481
CUSTOMER	:	H-30 DRILLING INC.	LEASE	:	MURPHY
WELL	:	#1-32 TEST: 1	GEOLOGIST	:	BURK
ELEVATION	:	1816 K.B.	FORMATION	:	LANSING F
SECTION	:	32	TOWNSHIP	:	22S
RANGE	:	11W	COUNTY	:	STAFFORD
GAUGE SN#	:	11018	RANGE	:	4425
			STATE	:	KANSAS
			CLOCK	:	12

INTERVAL FROM	:	3304	TO	:	3330	TOTAL DEPTH	:	3330
DEPTH OF SELECTIVE ZONE	:							
PACKER DEPTH	:	3299	SIZE	:	6.75			
PACKER DEPTH	:	3304	SIZE	:	6.75			
PACKER DEPTH	:		SIZE	:				
PACKER DEPTH	:		SIZE	:				

DRILLING CON.	:	COMPANY TOOLS #7			
MUD TYPE	:	CHEMICAL	VISCOSITY	:	40
WEIGHT	:	9.4	WATER LOSS (CC)	:	10.8
CHLORIDES (PPM)	:	8000			
JARS-MAKE	:		SERIAL NUMBER	:	
DID WELL FLOW ?	:	NO	REVERSED OUT ?	:	NO

DRILL COLLAR LENGTH	:	0	FT	:	I.D. inch	:	0.00
WEIGHT PIPE LENGTH	:	0	FT	:	I.D. inch	:	0.00
DRILL PIPE LENGTH	:	3284	FT	:	I.D. inch	:	3.80
TEST TOOL LENGTH	:	20	FT	:	TOOL SIZE	:	5.50
ANCHOR LENGTH	:	26	FT	:	ANCHOR SIZE	:	5.50
SURFACE CHOKE SIZE	:	.75	IN	:	BOTTOM CHOKE SIZE	:	.75
MAIN HOLE SIZE	:	7.875	IN	:	TOOL JOINT SIZE	:	4.5XH

BLOW COMMENT #1	:	INITIAL FLOW PERIOD WEAK BLOW.
BLOW COMMENT #2	:	DEAD IN 5 MINUTES.
BLOW COMMENT #3	:	FINAL FLOW PERIOD NO BLOW.
BLOW COMMENT #4	:	

RECEIVED
STATE COMMISSION COMMISSION

NOV 12 1991

CONSERVATION DIVISION
Wichita, Kansas

(ORIGINAL (

15-185-22710-0000

RECOVERED : 5 FT OF: DRLG. MUD W/ FEW SPOTS OIL

Total Barrels Fluid = 0.07
Total Fluid Prod Rate = 1.68 BFPD
Indicated Wtr Rate = 0.17 BWPD

REMARK 1 :
REMARK 2 : HIT BRIDGE GOING IN WITH TOOL.
REMARK 3 :
REMARK 4 :

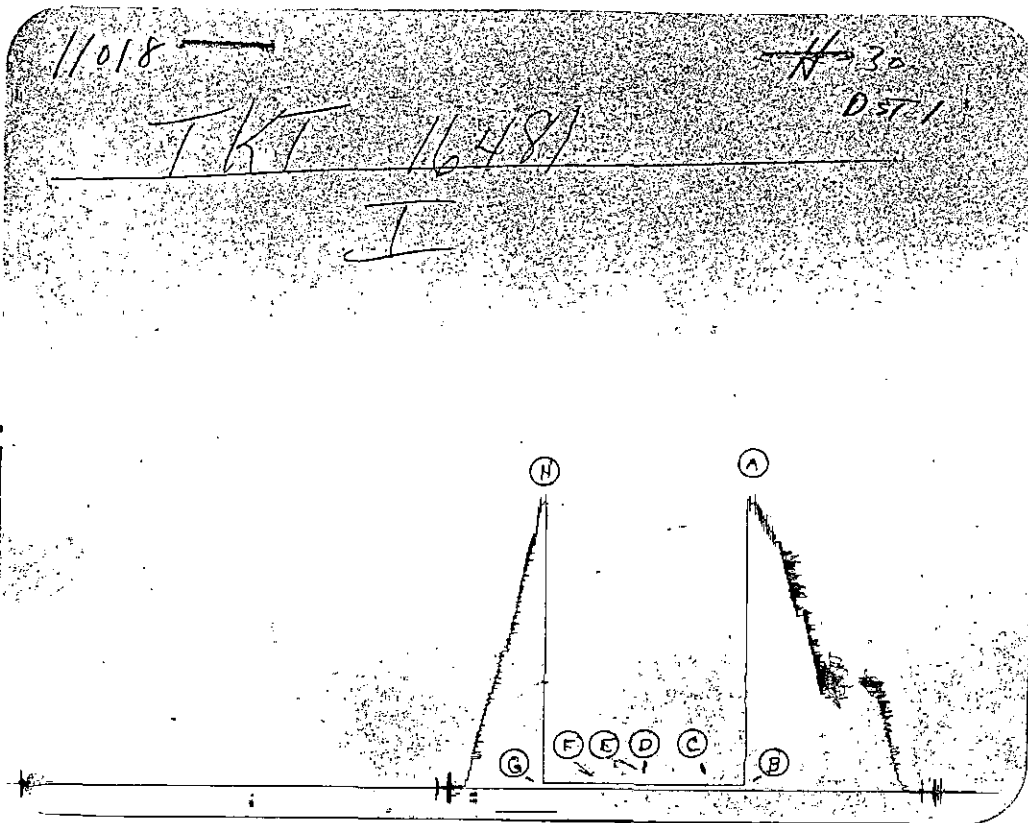
SET PACKER(S) : 7:35 A.M. TIME STARTED OFF BOTTOM : 10:05 A.M.
WELL TEMPERATURE : 110
INITIAL HYDROSTATIC PRESSURE (A) 1644
INITIAL FLOW PERIOD MIN: 30 (B) 33 PSI TO (C) : 33
INITIAL CLOSED IN PERIOD MIN: 45 (D) 33
FINAL FLOW PERIOD MIN: 30 (E) 33 PSI TO (F) : 33
FINAL CLOSED IN PERIOD MIN: 39 (G) 33
FINAL HYDROSTATIC PRESSURE (H) 1625

RECEIVED
STATE CORPORATION COMMISSION

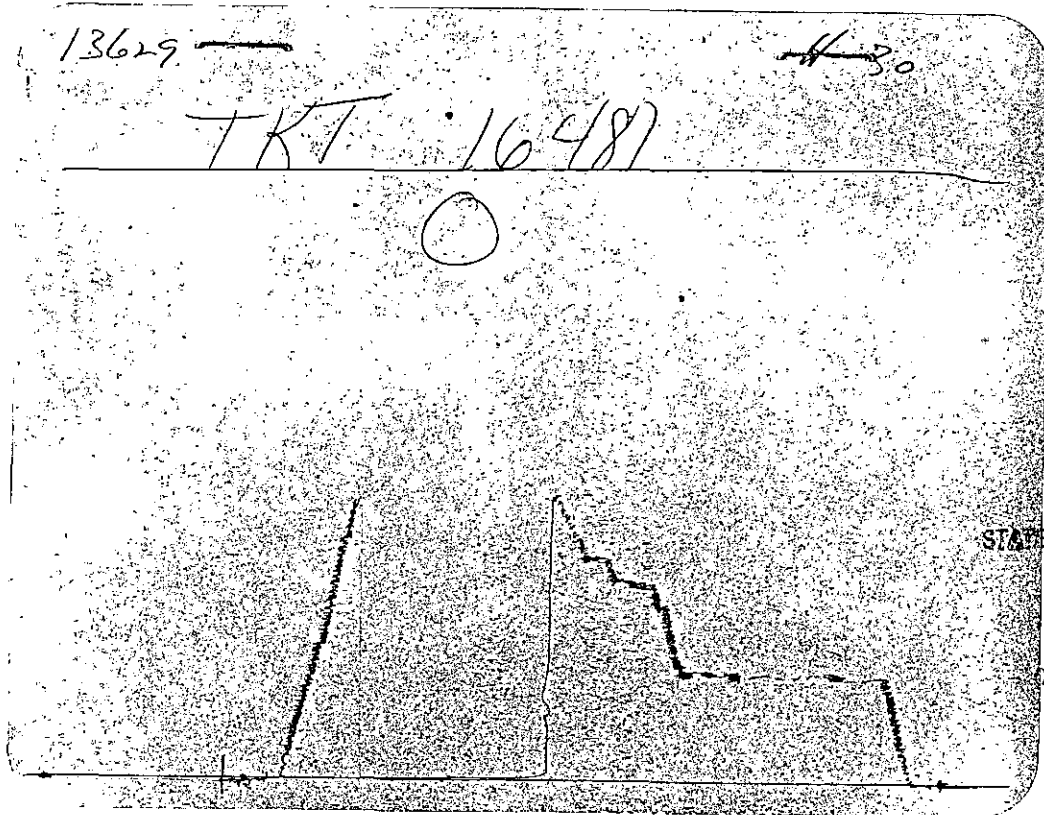
NOV 12 1991

Wichita, Kansas

ORIGINAL



Inside Recorder



Outside Recorder

RECEIVED
STATE CORPORATION

NOV 12 1991

CONSERVATION
Wichita, Kansas

ORIGINAL

15-185-22710-0000

WESTERN TESTING CO. INC.
SUBSURFACE PRESSURE SURVEY

DATE	:	9-27-90	TICKET	:	16482
CUSTOMER	:	H-30 DRILLING INC.	LEASE	:	MURPHY
WELL	:	#1-32 TEST: 2	GEOLOGIST	:	BURK
ELEVATION	:	1816 K.B.	FORMATION	:	LANS. H-1-J
SECTION	:	32	TOWNSHIP	:	22S
RANGE	:	11W	COUNTY	:	STAFFORD
GAUGE SN#	:	11018	RANGE	:	4425
			STATE	:	KANSAS
			CLOCK	:	12

INTERVAL FROM	:	3374	TO	:	3430	TOTAL DEPTH	:	3430
DEPTH OF SELECTIVE ZONE	:							
PACKER DEPTH	:	3369	SIZE	:	6.75			
PACKER DEPTH	:	3374	SIZE	:	6.75			
PACKER DEPTH	:		SIZE	:				
PACKER DEPTH	:		SIZE	:				

DRILLING CON.	:	COMPANY TOOLS #7			
MUD TYPE	:	CHEMICAL	VISCOSITY	:	40
WEIGHT	:	9.4	WATER LOSS (CC)	:	10.8
CHLORIDES (PPM)	:				
JARS-MAKE	:		SERIAL NUMBER	:	
DID WELL FLOW ?	:	NO	REVERSED OUT ?	:	NO

DRILL COLLAR LENGTH	:	0	FT	I.D. inch	:	0.00
WEIGHT PIPE LENGTH	:	0	FT	I.D. inch	:	0.00
DRILL PIPE LENGTH	:	3354	FT	I.D. inch	:	3.80
TEST TOOL LENGTH	:	20	FT	TOOL SIZE	:	5.50
ANCHOR LENGTH	:	56	FT	ANCHOR SIZE	:	5.50
SURFACE CHOKE SIZE	:	.75	IN	BOTTOM CHOKE SIZE	:	.75
MAIN HOLE SIZE	:	7.875	IN	TOOL JOINT SIZE	:	4.5XH

BLOW COMMENT #1 : INITIAL FLOW PERIOD WEAK BLOW.
 BLOW COMMENT #2 : DEAD IN 5 MINUTES.
 BLOW COMMENT #3 : FINAL FLOW PERIOD NO BLOW.
 BLOW COMMENT #4 :

RECEIVED
STATE CORPORATION COMMISSION

NOV 12 1991

STAFFORD COUNTY, KANSAS

ORIGINAL

15-185-22710-0000

RECOVERED : 10 FT OF: DRLG. MUD W/ FEW SPOTS OIL

Total Barrels Fluid = 0.14
Total Fluid Prod Rate = 3.37 BFPD
Indicated Wtr Rate = 0.34 BWPD

REMARK 1 :
REMARK 2 :
REMARK 3 :
REMARK 4 :

SET PACKER(S) :	11:25 P.M.	TIME STARTED OFF BOTTOM :	1:25 A.M.
WELL TEMPERATURE :	111		
INITIAL HYDROSTATIC PRESSURE		(A)	1675
INITIAL FLOW PERIOD MIN:	30	(B)	47 PSI TO (C) : 47
INITIAL CLOSED IN PERIOD MIN:	30	(D)	71
FINAL FLOW PERIOD MIN:	30	(E)	47 PSI TO (F) : 47
FINAL CLOSED IN PERIOD MIN:	27	(G)	60
FINAL HYDROSTATIC PRESSURE		(H)	1658

RECEIVED
STATE COMMISSION

NOV 12 1991

CONSERVATION DIVISION
Wichita, Kansas

ORIGINAL

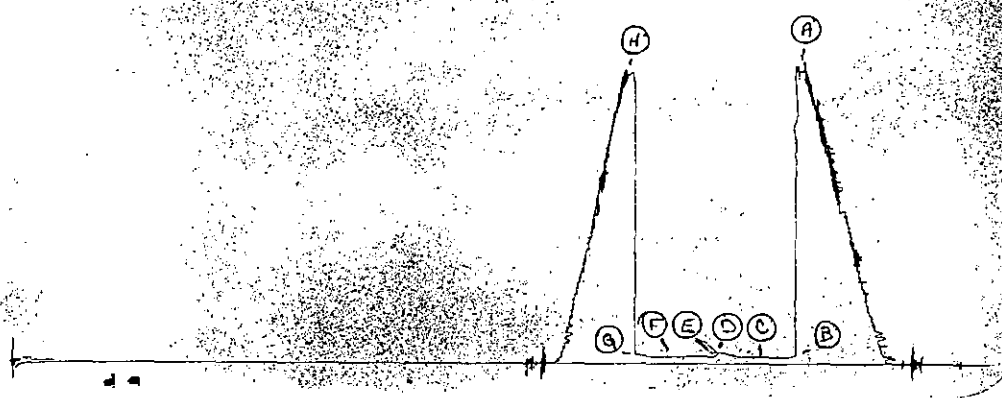
11018

H-30

TKT 16482

DST 2

I



Inside Recorder

13629

H-30

TKT 16482

DST 2

O

RECEIVED
STATE CORPORATION COMMISSION

NOV 12 1991

CONSERVATION DIVISION

Outside Recorder

ORIGINAL

WESTERN TESTING CO. INC.
SUBSURFACE PRESSURE SURVEY

DATE	:	9-28-90	TICKET	:	16483
CUSTOMER	:	H-30 DRILLING INC.	LEASE	:	MURPHY
WELL	:	#1-32 TEST: 3	GEOLOGIST	:	BURK
ELEVATION	:	1816 K.B.	FORMATION	:	LANSING L
SECTION	:	32	TOWNSHIP	:	22S
RANGE	:	11W	COUNTY	:	STAFFORD
GUAGE SN#	:	11018	RANGE	:	4425
			STATE	:	KANSAS
			CLOCK	:	12

INTERVAL FROM	:	3474	TO	:	3505	TOTAL DEPTH	:	3505
DEPTH OF SELECTIVE ZONE	:							
PACKER DEPTH	:	3469	SIZE	:	6.75			
PACKER DEPTH	:	3474	SIZE	:	6.75			
PACKER DEPTH	:		SIZE	:				
PACKER DEPTH	:		SIZE	:				

DRILLING CON.	:	COMPANY TOOLS #7			
MUD TYPE	:	CHEMICAL	VISCOSITY	:	45
WEIGHT	:	9.4	WATER LOSS (CC)	:	10.4
CHLORIDES (PPM)	:	9000			
JARS-MAKE	:		SERIAL NUMBER	:	
DID WELL FLOW ?	:	NO	REVERSED OUT ?	:	NO

DRILL COLLAR LENGTH	:	0	FT	I.D. inch	:	0.00
WEIGHT PIPE LENGTH	:	0	FT	I.D. inch	:	0.00
DRILL PIPE LENGTH	:	3454	FT	I.D. inch	:	3.80
TEST TOOL LENGTH	:	20	FT	TOOL SIZE	:	5.50
ANCHOR LENGTH	:	31	FT	ANCHOR SIZE	:	5.50
SURFACE CHOKE SIZE	:	.75	IN	BOTTOM CHOKE SIZE	:	.75
MAIN HOLE SIZE	:	7.875	IN	TOOL JOINT SIZE	:	4.5XH

BLOW COMMENT #1	:	INITIAL FLOW PERIOD WEAK BLOW.
BLOW COMMENT #2	:	DEAD IN 10 MINUTES.
BLOW COMMENT #3	:	FINAL FLOW PERIOD WEAK BLOW.
BLOW COMMENT #4	:	DEAD IN 5 MINUTES.

RECEIVED
STATE COMMISSION

NOV 12 1991

CONSERVATION DIVISION
Wichita Kansas

ORIGINAL

15-185-22710-0000

RECOVERED : 5 FT OF: DRLG. MUD W/ OIL SPOTS

Total Barrels Fluid = 0.07
Total Fluid Prod Rate = 1.68 BFPD
Indicated Wtr Rate = 0.17 BWPD

REMARK 1 :
REMARK 2 :
REMARK 3 :
REMARK 4 :

SET PACKER(S) : 1:45 P.M. TIME STARTED OFF BOTTOM : 3:45 P.M.
WELL TEMPERATURE : 112
INITIAL HYDROSTATIC PRESSURE (A) 1754
INITIAL FLOW PERIOD MIN: 30 (B) 49 PSI TO (C) : 49
INITIAL CLOSED IN PERIOD MIN: 30 (D) 49
FINAL FLOW PERIOD MIN: 30 (E) 49 PSI TO (F) : 49
FINAL CLOSED IN PERIOD MIN: 24 (G) 49
FINAL HYDROSTATIC PRESSURE (H) 1703

RECEIVED
STATE COMMISSION

NOV 12 1991

CONSERVATION DIVISION
Wichita, Kansas

ORIGINAL

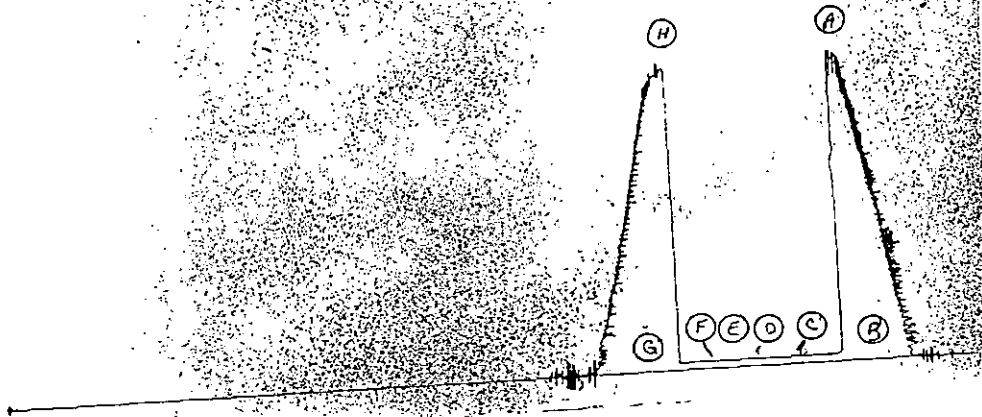
15-185-22710-0000

11018

H-30
DST 3

TKT 16483

I



Inside Recorder

13629

H-30
DST 3

TKT 16483

O

RECEIVED
STATE OF KANSAS

NOV 2 1991

Wichita, Kansas

Outside Recorder

ORIGINAL

15-185-22710-0000

WESTERN TESTING CO. INC.
SUBSURFACE PRESSURE SURVEY

DATE	:	9-29-90	TICKET	:	16484
CUSTOMER	:	H-30 DRILLING INC.	LEASE	:	MURPHY
WELL	:	#1-32 TEST: 4	GEOLOGIST	:	BURK
ELEVATION	:	1816 K.B.	FORMATION	:	SIMPSON
SECTION	:	32	TOWNSHIP	:	22S
RANGE	:	11W	COUNTY	:	STAFFORD
Gauge SN#	:	11018	RANGE	:	4425
			STATE	:	KANSAS
			CLOCK	:	12

INTERVAL FROM	:	3550	TO	:	3590	TOTAL DEPTH	:	3590
DEPTH OF SELECTIVE ZONE	:							
PACKER DEPTH	:	3545	SIZE	:	6.75			
PACKER DEPTH	:	3550	SIZE	:	6.75			
PACKER DEPTH	:		SIZE	:				
PACKER DEPTH	:		SIZE	:				

DRILLING CON.	:	COMPANY TOOLS #7			
MUD TYPE	:	CHEMICAL	VISCOSITY	:	45
WEIGHT	:	9.4	WATER LOSS (CC)	:	10.4
CHLORIDES (PPM)	:	9000			
JARS-MAKE	:		SERIAL NUMBER	:	
DID WELL FLOW ?	:	NO	REVERSED OUT ?	:	NO

DRILL COLLAR LENGTH	:	0	FT	I.D. inch	:	0.00
WEIGHT PIPE LENGTH	:	0	FT	I.D. inch	:	0.00
DRILL PIPE LENGTH	:	3530	FT	I.D. inch	:	3.80
TEST TOOL LENGTH	:	20	FT	TOOL SIZE	:	5.50
ANCHOR LENGTH	:	40	FT	ANCHOR SIZE	:	5.50
SURFACE CHOKE SIZE	:	.75	IN	BOTTOM CHOKE SIZE	:	.75
MAIN HOLE SIZE	:	7.875	IN	TOOL JOINT SIZE	:	4.5XH

BLOW COMMENT #1 : INITIAL FLOW PERIOD WEAK BLOW BUILDING
 BLOW COMMENT #2 : TO A FAIR BLOW-6 INCHES IN BUCKET.
 BLOW COMMENT #3 : FINAL FLOW PERIOD WEAK BLOW-3 INCHES IN
 BLOW COMMENT #4 : BUCKET.

RECEIVED
 STATE COMMISSION

NOV 12 1991

CONSERVATION DIVISION
 Wichita, Kansas

ORIGINAL

RECOVERED : 80 FT OF: SLI. WATER-CUT DRLG. MUD
 RECOVERED : 0 FT OF: W/ FEW SPOTS OIL
 RECOVERED : 0 FT OF: CHLORIDES 17000 P.P.M.

Total Barrels Fluid = 1.12
 Total Fluid Prod Rate = 17.95 BFPD
 Indicated Wtr Rate = 3.59 BWPD

REMARK 1 :
 REMARK 2 :
 REMARK 3 :
 REMARK 4 :

SET PACKER(S) : 3:45 A.M. TIME STARTED OFF BOTTOM : 7:30 A.M.
 WELL TEMPERATURE : 113
 INITIAL HYDROSTATIC PRESSURE (A) 1765
 INITIAL FLOW PERIOD MIN: 30 (B) 49 PSI TO (C) : 49
 INITIAL CLOSED IN PERIOD MIN: 45 (D) 1129
 FINAL FLOW PERIOD MIN: 60 (E) 62 PSI TO (F) : 62
 FINAL CLOSED IN PERIOD MIN: 90 (G) 1144
 FINAL HYDROSTATIC PRESSURE (H) 1759

RECEIVED
 STATE COMMISSION

NOV 12 1991

CONSERVATION DIVISION

ORIGINAL

15-185-22710-0000

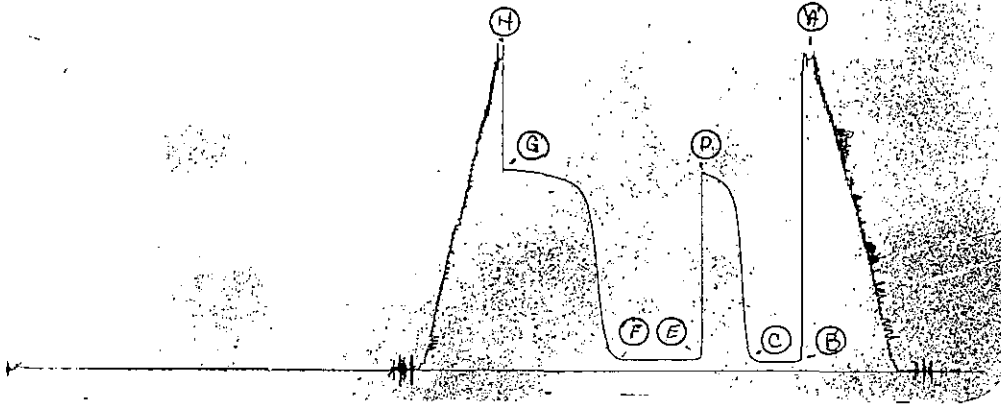
11018

TKT 16484

H-30

DST 4

I



Inside Recorder

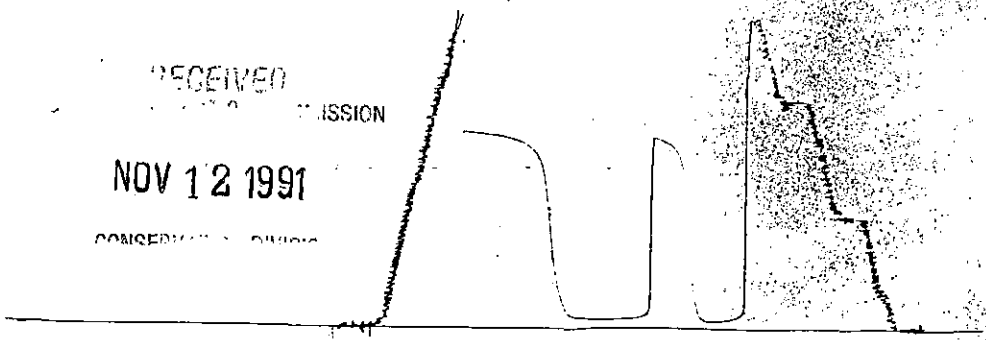
13629

TKT 16484

H-30

DST 4

O



RECEIVED
MISSION

NOV 12 1991

CONCERNING

Outside Recorder

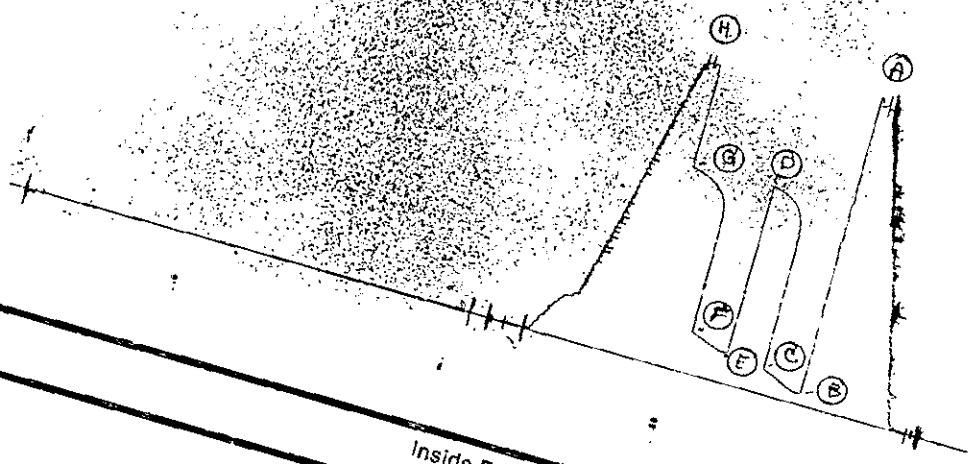
11018

ORIGINAL

15-185-22710-0000

TKT 16485

H-30
DST 5

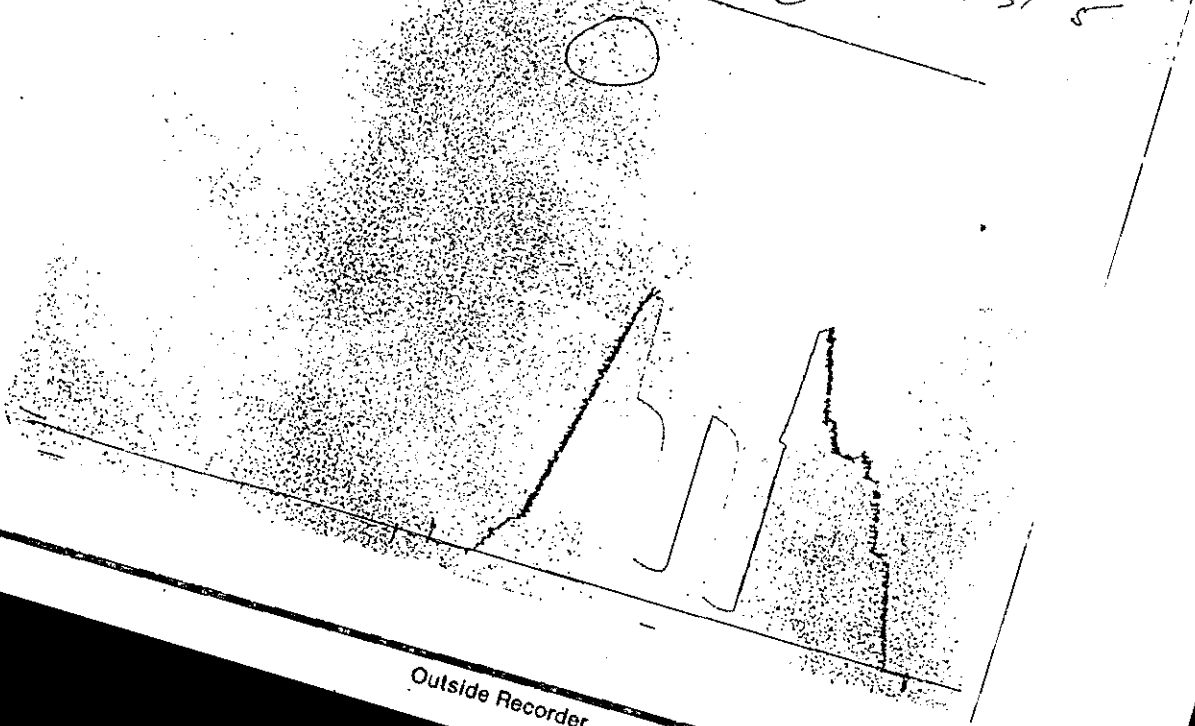


Inside Recorder

13629

TKT 16485

H-30
DST 5



Outside Recorder

WESTERN TESTING CO. INC.
SUBSURFACE PRESSURE SURVEY

DATE	:	9-29-90	TICKET	:	16485
CUSTOMER	:	H-30 DRILLING INC.	LEASE	:	MURPHY
WELL	:	#1-32 TEST: 5	GEOLOGIST	:	BURK
ELEVATION	:	1816 K.B.	FORMATION	:	ARBUCKLE
SECTION	:	32	TOWNSHIP	:	22S
RANGE	:	11W	COUNTY	:	STAFFORD
GAUGE SN#	:	11018	RANGE	:	4425
			STATE	:	KANSAS
			CLOCK	:	12

INTERVAL FROM	:	3584	TO	:	3621	TOTAL DEPTH	:	3621
DEPTH OF SELECTIVE ZONE	:							
PACKER DEPTH	:	3579	SIZE	:	6.75			
PACKER DEPTH	:	3584	SIZE	:	6.75			
PACKER DEPTH	:		SIZE	:				
PACKER DEPTH	:		SIZE	:				

DRILLING CON.	:	COMPANY TOOLS #7			
MUD TYPE	:	CHEMICAL	VISCOSITY	:	48
WEIGHT	:	9.6	WATER LOSS (CC)	:	12.0
CHLORIDES (PPM)	:	8000			
JARS-MAKE	:		SERIAL NUMBER	:	
DID WELL FLOW ?	:	NO	REVERSED OUT ?	:	NO

DRILL COLLAR LENGTH	:	0	FT	I.D. inch	:	0.00
WEIGHT PIPE LENGTH	:	0	FT	I.D. inch	:	0.00
DRILL PIPE LENGTH	:	3564	FT	I.D. inch	:	3.80
TEST TOOL LENGTH	:	20	FT	TOOL SIZE	:	5.50
ANCHOR LENGTH	:	37	FT	ANCHOR SIZE	:	5.50
SURFACE CHOKE SIZE	:	.75	IN	BOTTOM CHOKE SIZE	:	.75
MAIN HOLE SIZE	:	7.875	IN	TOOL JOINT SIZE	:	4.5XH

BLOW COMMENT #1 : INITIAL FLOW PERIOD STRONG BLOW.
 BLOW COMMENT #2 : BOTTOM OF BUCKET IN 10 MINUTES.
 BLOW COMMENT #3 : FINAL FLOW PERIOD STRONG BLOW.
 BLOW COMMENT #4 : BOTTOM OF BUCKET IN 25 MINUTES.

RECEIVED
STATE CORPORATION COMMISSION

NOV 12 1991
CORPORATION DIVISION
Wichita, Kansas

NOV 12 1991
STATE CORPORATION COMMISSION

ORIGINAL

ORIGINAL

RECOVERED : 280 FT OF: SLI. GAS-CUT MUDDY WATER
 RECOVERED : 180 FT OF: SLI. MUD-CUT WATER
 RECOVERED : 0 FT OF: CHLORIDES 16000 P.P.M.

Total Barrels Fluid = 6.45
 Total Fluid Prod Rate = 154.85 BFPD
 Indicated Wtr Rate = 92.57 BWPD

REMARK 1 :
 REMARK 2 :
 REMARK 3 :
 REMARK 4 :

SET PACKER(S) :	5:15 P.M.	TIME STARTED OFF BOTTOM :	7:15 P.M.
WELL TEMPERATURE :	115		
INITIAL HYDROSTATIC PRESSURE		(A)	1823
INITIAL FLOW PERIOD MIN:	30	(B)	60 PSI TO (C) : 147
INITIAL CLOSED IN PERIOD MIN:	30	(D)	1166
FINAL FLOW PERIOD MIN:	30	(E)	176 PSI TO (F) : 247
FINAL CLOSED IN PERIOD MIN:	33	(G)	1151
FINAL HYDROSTATIC PRESSURE		(H)	1791