

TYPE OR PRINT

**NOTICE OF INTENTION TO DRILL**

RULE 82-2-311

15-185-30247-0000

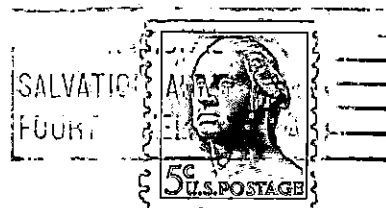
**TO BE FILED WITH THE STATE CORPORATION COMMISSION PRIOR TO COMMENCEMENT OF WELL**

1. Operator GABBERT-JONES, INC. Address 514 ORPHEUM BLDG., WICHITA, KANSAS
2. Lease name BROCK Well No. 1 County STAFFORD
3. Well Location SW NW S<sup>1</sup> Sec. 8 Township 23S Range 11W
4. Well to be drilled 330 ft. from nearest lease line.
5. Drilling Contractor GABBERT-JONES, INC. Address 514 ORPHEUM BLDG., WICHITA, KANSAS
6. Type of equipment: Rotary  Cable Tool  Approx. date operation to begin MAY 5 1966
7. Well to be drilled for Oil  Gas  Disposal  Input  Estimated Total Depth of Well 3700 ft.
8. Depth of deepest fresh water well within one mile of location 60 ft. If none exist, write NONE
9. Ground elevation at location is approx. SAME ft. higher or \_\_\_\_\_ ft. lower than ground elevation at water well.
10. Depth of the deepest municipal water well within three miles of location \_\_\_\_\_ ft. If none exist, write NONE  
NONE
11. Operator states that he will set surface pipe at least 25 ft. below all Tertiary or unconsolidated deposits and, taking into consideration differences in ground elevations, that the minimum depth necessary, to the best of his knowledge and belief, to protect all fresh water zones is 100 ft. and operator agrees to set surface pipe at this location to a depth of not less than 290 ft. Alternate 1  Alternate 2

REMARKS:

Signature of Operator





**State Corporation Commission of Kansas  
Conservation Division  
500 Insurance Building  
212 North Market  
Wichita 2, Kansas**

**RECEIVED**  
STATE CORPORATION COMMISSION  
5-6-66  
MAY 6 - 1966

CONSERVATION DIVISION  
Wichita, Kansas

**(IF PREFERRED, MAIL IN ENVELOPE)**