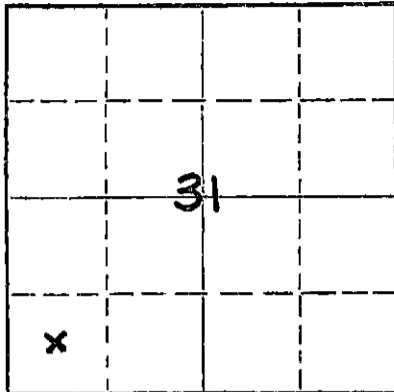


STATE OF KANSAS
STATE CORPORATION COMMISSION

Form CP-4

Give All Information Completely
Make Required Affidavit
Mail or Deliver Report to:
Conservation Division
State Corporation Commission
P. O. Box 17027
Wichita, Kansas 67217
NORTH

WELL PLUGGING RECORD



Locate well correctly on above
Section Plat

Stafford County, Sec. 31 Twp. 22 Rge. 11W (E) (W)
Location as "NE/CNW/SW" or footage from lines. 0 SW SW
Lease Owner Clinton Oil Company
Lease Name Allen A#1 Well No.
Office Address Great Bend, Kansas 67530
Character of Well (completed as Oil, Gas or Dry Hole) oil
Date well completed 2/20/32 19
Application for plugging filed 4/12/72 19
Application for plugging approved 4/13/72 19
Plugging commenced 4/17/72 19
Plugging completed 4/17/72 19
Reason for abandonment of well or producing formation depleted.

If a producing well is abandoned, date of last production 8/71 19
Was permission obtained from the Conservation Division or its agents before plugging was commenced? YES

Name of Conservation Agent who supervised plugging of this well Biberstein
Producing formation Arbuckle Depth to top 3534 Bottom 3560 Total Depth of Well 3560 Feet
Show depth and thickness of all water, oil and gas formations.

OIL, GAS OR WATER RECORDS

CASING RECORD

FORMATION	CONTENT	FROM	TO	SIZE	PUT IN	PULLED OUT
Arbuckle	oil	3534	3560	13"	248	none
				8-5/8	3534	none

Describe in detail the manner in which the well was plugged, indicating where the mud fluid was placed and the method or methods used in introducing it into the hole. If cement or other plugs were used, state the character of same and depth placed, from feet to feet for each plug set.

Checked hole to 3560', ran sand to 3500' and ran 7 sacks of cement. Set 10' rock bridge at 360' and ran 6 yards concrete.

PLUGGING COMPLETE.

RECEIVED
STATE CORPORATION COMMISSION

APR 26 1972

CONSERVATION DIVISION
Wichita, Kansas

(If additional description is necessary, use BACK of this sheet)

Name of Plugging Contractor KNIGHT CASING PULLING CO., INC.
Address CHASE, KANSAS

STATE OF KANSAS, COUNTY OF RICE, ss.
NOEL J. KNIGHT (employee of owner) or (owner or operator) of the above-described well, being first duly sworn on oath, says: That I have knowledge of the facts, statements, and matters herein contained and the log of the above-described well as filed and that the same are true and correct. So help me God.

(Signature) Noel Knight
CHASE, KANSAS (Address)

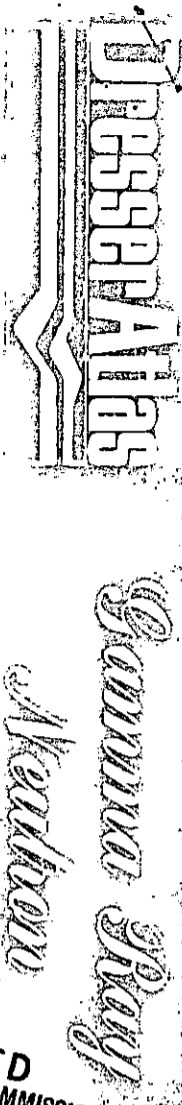
SUBSCRIBED AND SWORN to before me this 18th day of April, 1972

My commission expires



MARGARET MELCHER
NOTARY PUBLIC
Rice County, Kansas
My Commission Expires
Feb. 15, 1975

Notary Public.



15-185-02091-0000

FILE NO. COMPANY Chasron O. I. Co.

WELL Allen "A" #1

FIELD Richardson

COUNTY Stearns STATE KANSAS

LOCATION: G. SW - SW

SEC. 31 TWP. 22S RGE. 11W

RECEIVED STATE CORPORATION COMMISSION
APR 13 1972

Permanent Datum Campani Elope Elev. N/A
 Log Measured from Campani Elope Ft. Above Permanent Datum
 Drilling Measured from _____

Date	<u>4-22-71</u>
Run No.	<u>0111</u>
Type Log	<u>GR-N</u>
Depth-Driller	<u>3560</u>
Depth-Logger	<u>3525</u>
Bottom Logged Interval	<u>2000</u>
Top Logged Interval	<u>Oil Gun</u>
Type Fluid in Hole	<u>Oil Gun</u>
Solvent Perm Cl.	<u>-</u>
Density Lb. Gall.	<u>-</u>
Level	<u>1705</u>
Max Rec. Temp. Deg. F	<u>-</u>
Opn. Rig Time	<u>3 hrs</u>
Recorded By	<u>R. Salinas</u>
Witnessed By	<u>R. Salinas</u>

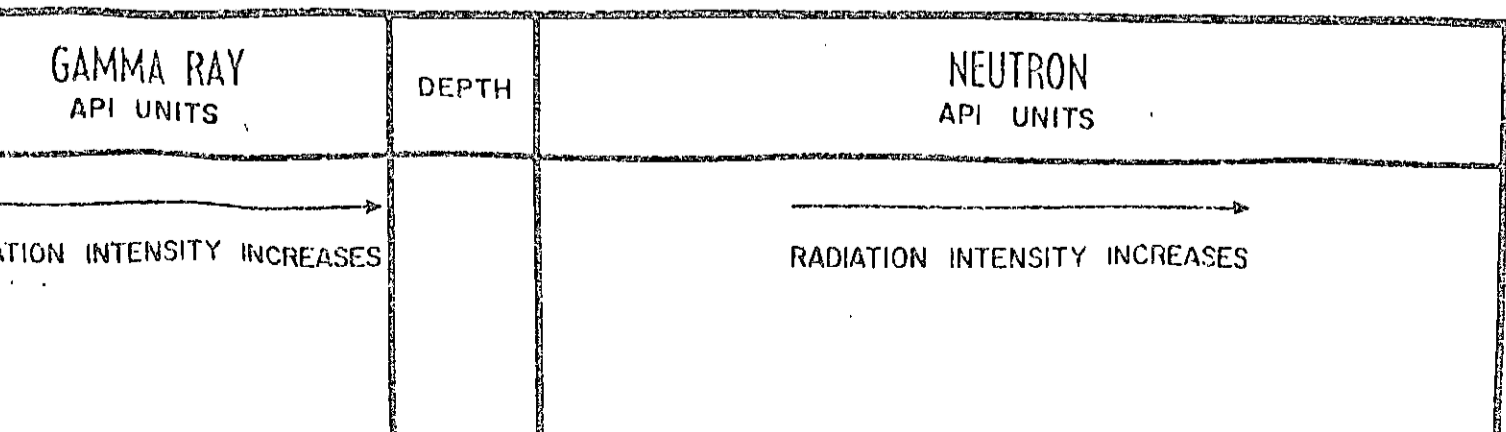
Run Bore Hole Record

Run No.	Bit	From	To	Size	Wgt.	From	To
	<u>OT Hole</u>			<u>16</u>	<u>70</u>	<u>SURE</u>	<u>159</u>
				<u>13</u>	<u>54</u>	<u>SURE</u>	<u>248</u>
				<u>8 3/8</u>	<u>36</u>	<u>SURE</u>	<u>3534</u>

Equipment Data		Elevations:	
Run No.	<u>ONE</u>	KB	<u>N/A</u>
Log Type	<u>N/A</u>	DF	<u>N/A</u>
Tool Model No.	<u>2403</u>	GL	<u>N/A</u>
Diam.	<u>5 1/2</u>		
Detect. Model No.	<u>D6N3</u>		
Type	<u>SCINT</u>		
Length	<u>4</u>		
Source Model No.	<u>516E5</u>		
Serial No.	<u>3575</u>		
Spacing	<u>12.7</u>		
Type	<u>TYPE</u>		
Strength	<u>5 (URIF)</u>		

General				Gamma Ray				Neutron											
Truck No.	<u>LL-1004</u>	Speed Ft./Min.	<u>30</u>	T.C. Sec.	<u>20</u>	Sens. Settings	<u>933X</u>	Zero Div. L or R	<u>2L</u>	API G.R. Units Per Log Div.	<u>8</u>	T.C. Sec.	<u>20</u>	Sens. Settings	<u>189X10</u>	Zero Div. L or R	<u>12L</u>	API N. Units Per Log Div.	<u>30</u>

Reference Literature: NO.



GAMMA RAY
API UNITS

DEPTH

NEUTRON
API UNITS

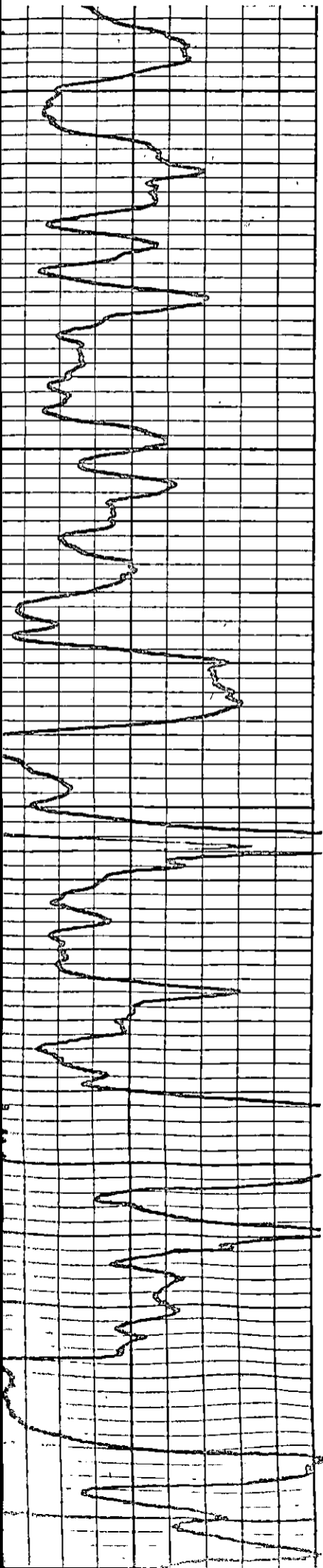
RADIATION INTENSITY INCREASES →

→ RADIATION INTENSITY INCREASES

96

360

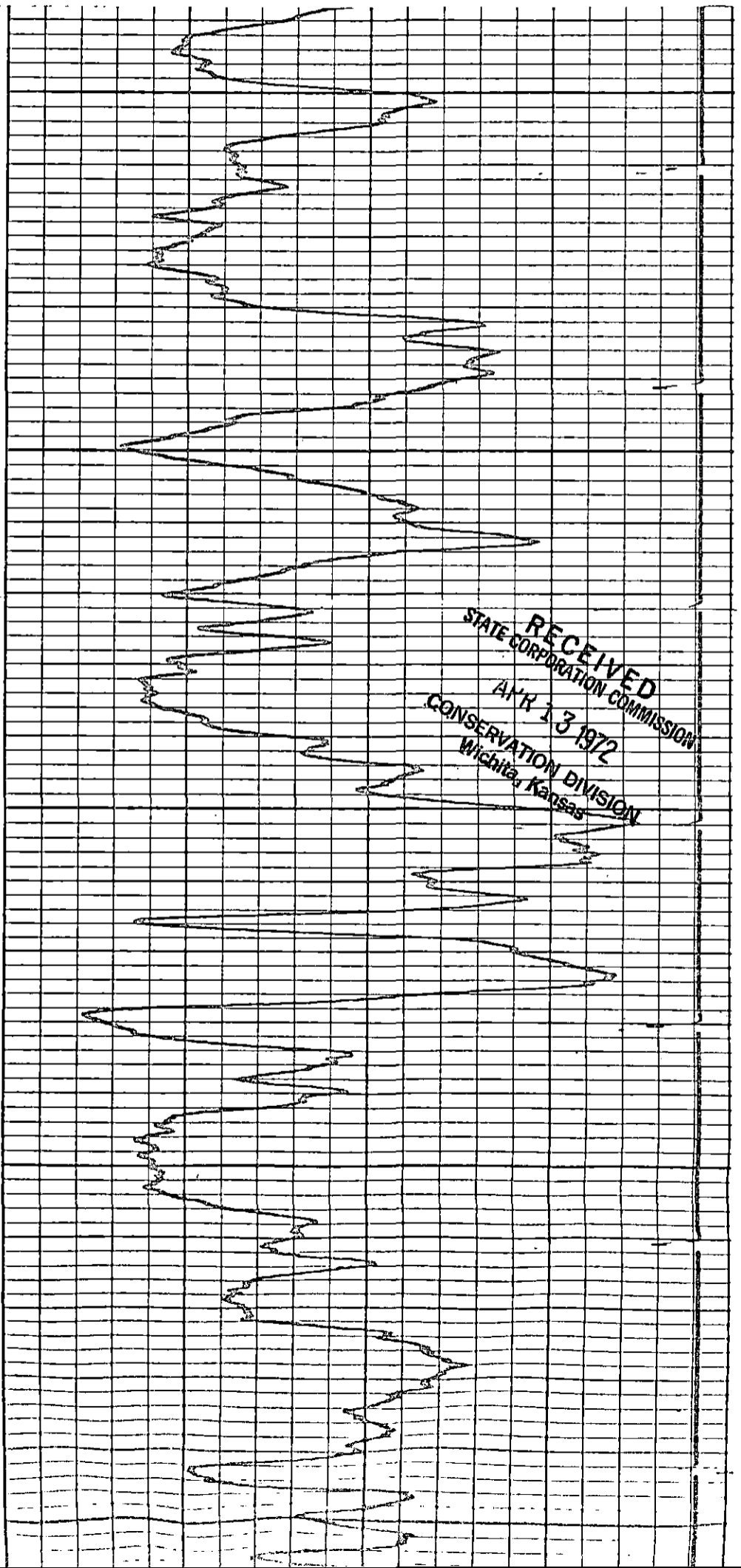
960



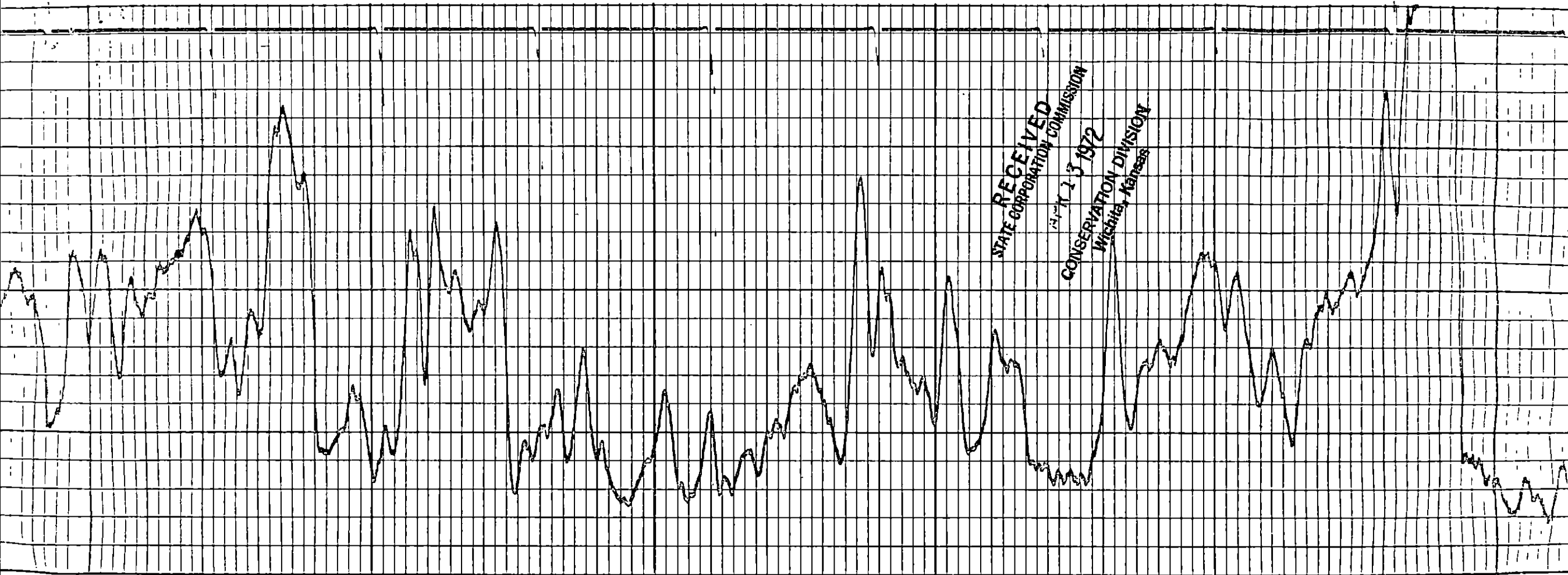
2000

2100

2200



RECEIVED
STATE CORPORATION COMMISSION
APR 13 1972
CONSERVATION DIVISION
Wichita, Kansas

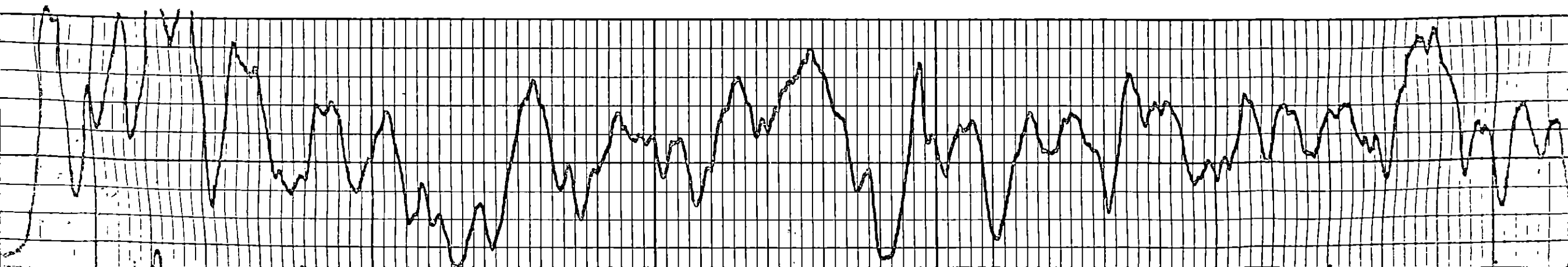


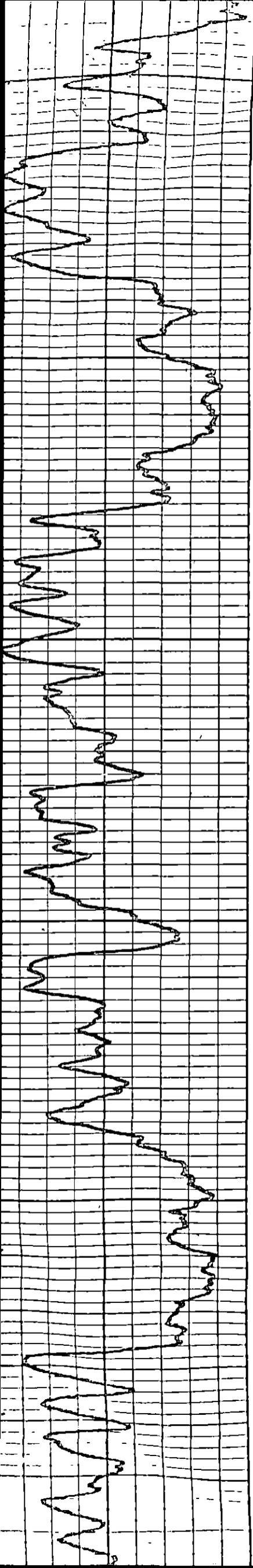
RECEIVED
STATE CORPORATION COMMISSION
MAY 23 1972
CONSERVATION DIVISION
Wichita, Kansas

2200

2300

2400

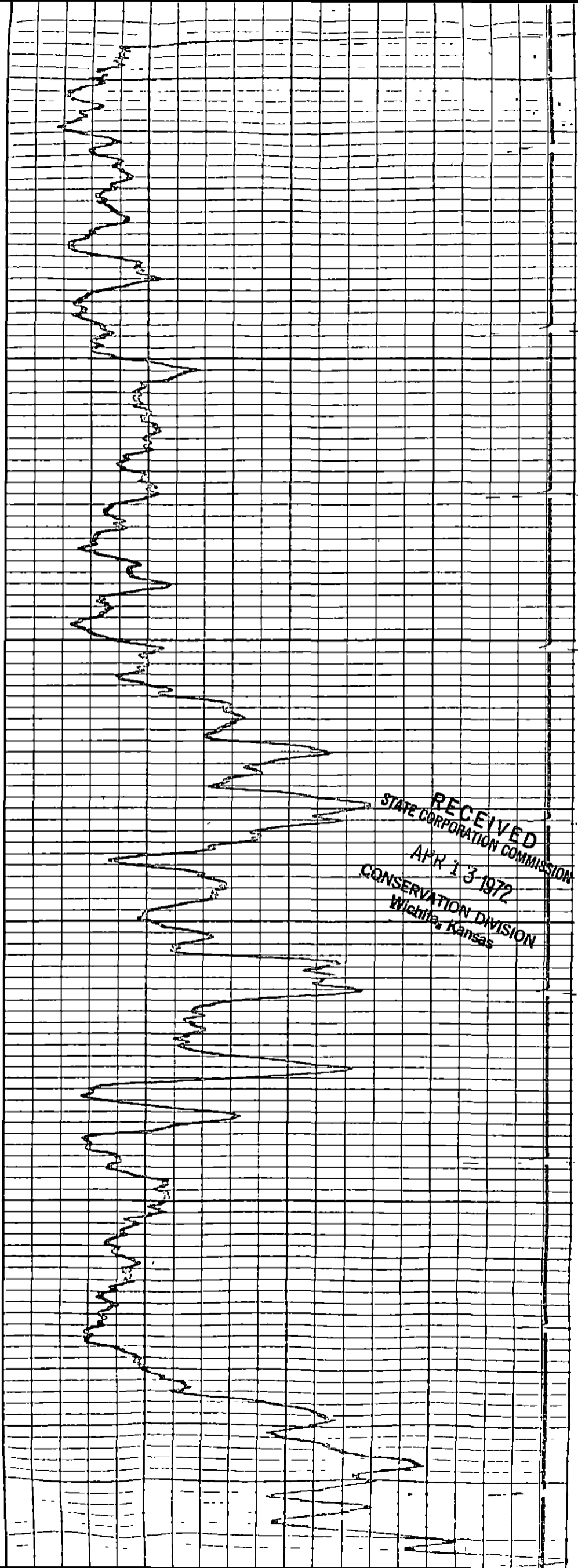




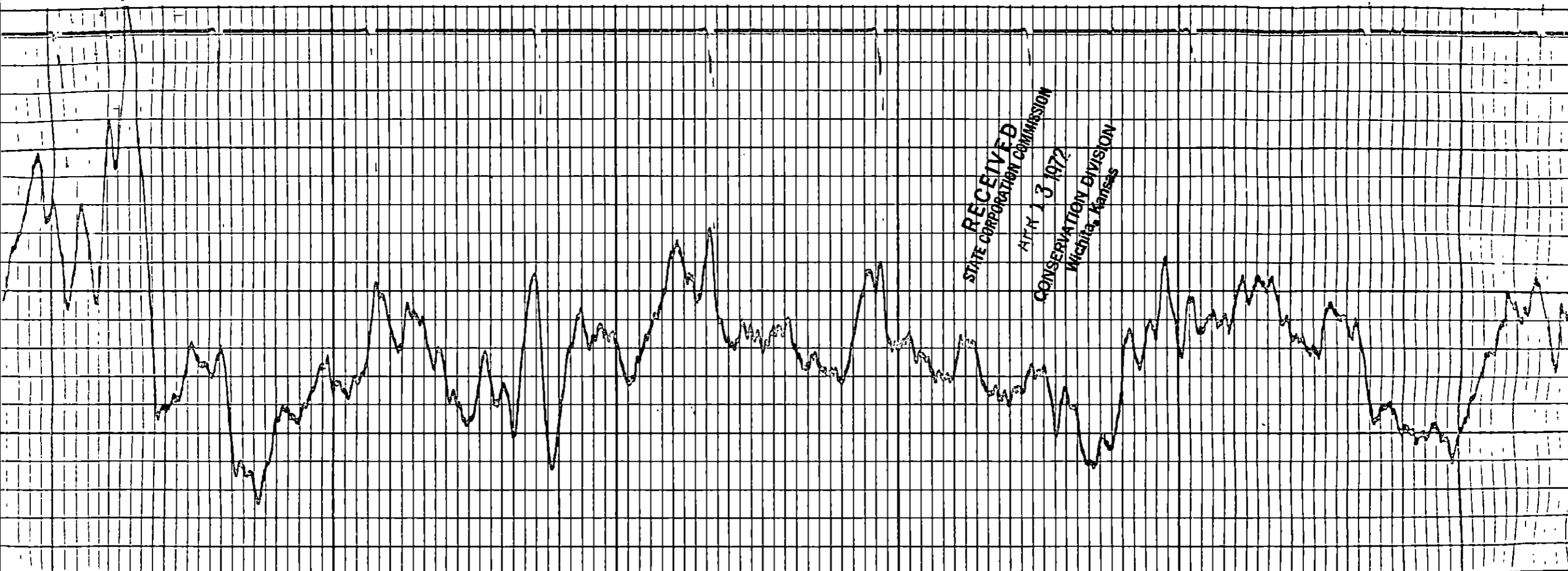
2500

2600

2700



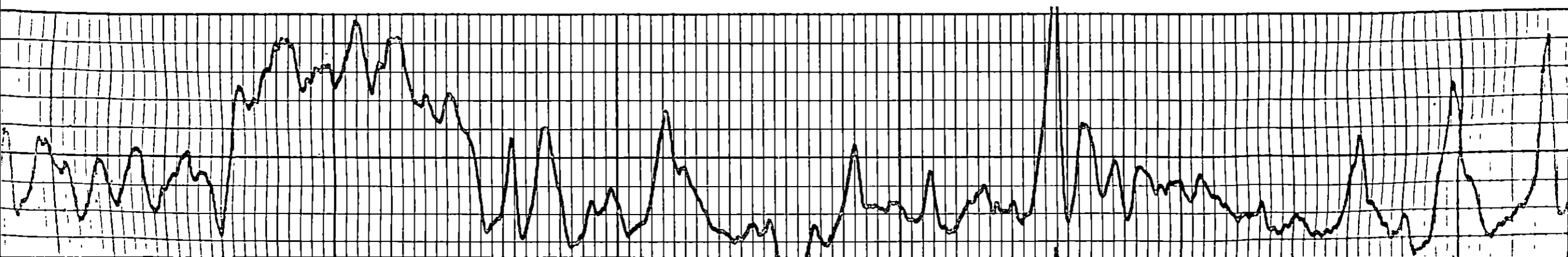
RECEIVED
STATE CORPORATION COMMISSION
APR 13 1972
CONSERVATION DIVISION
Wichita, Kansas



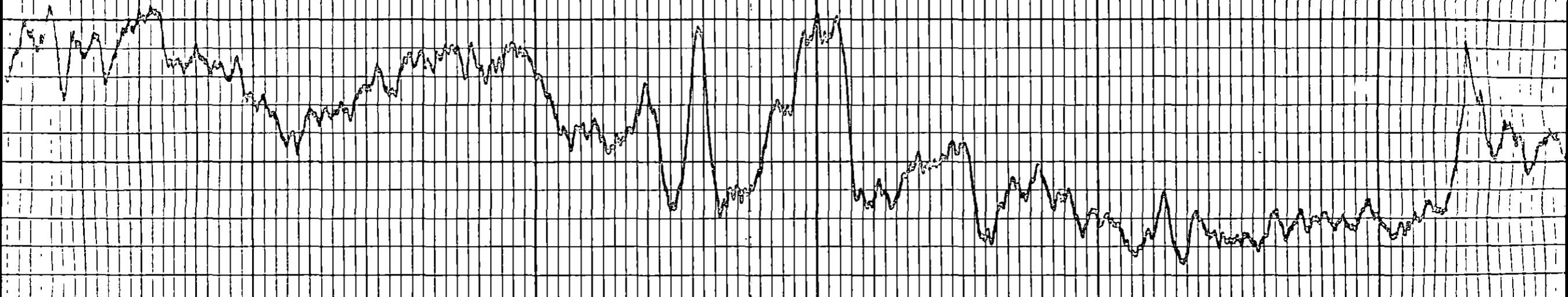
2700

2800

2900



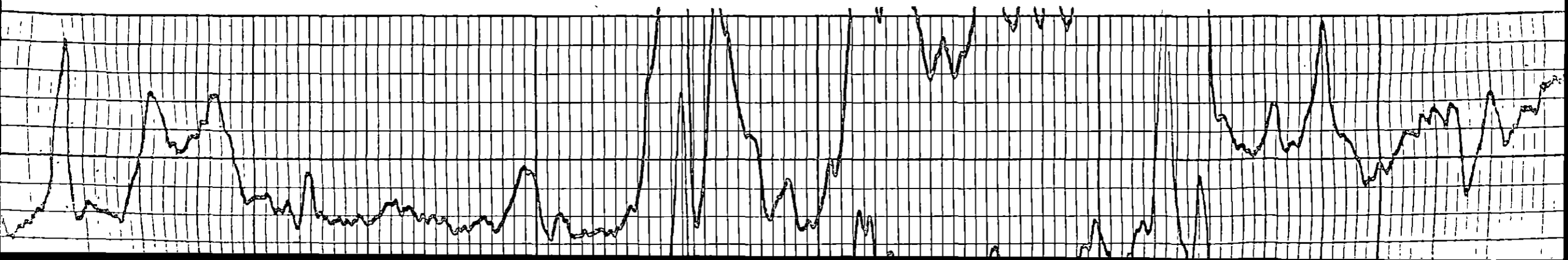
RECEIVED
STATE DEPARTMENT COMMISSION
APR 13 1973
CONSERVATION DIVISION
Wichita, Kansas

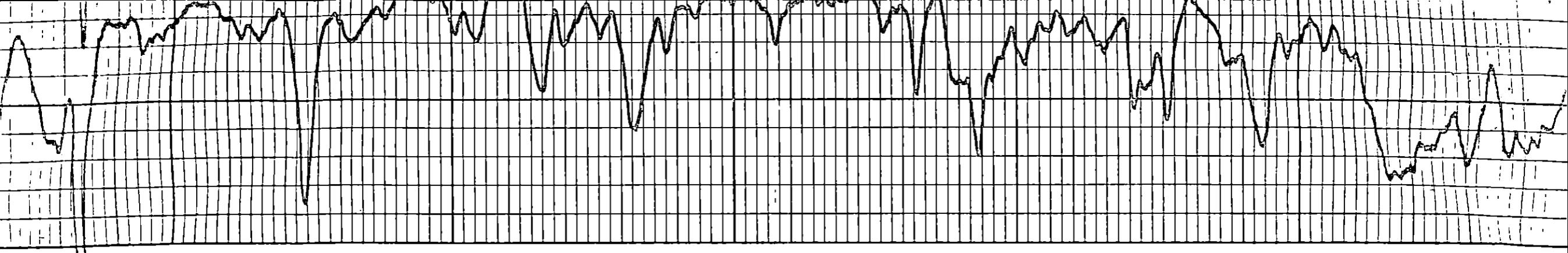


3000

3100

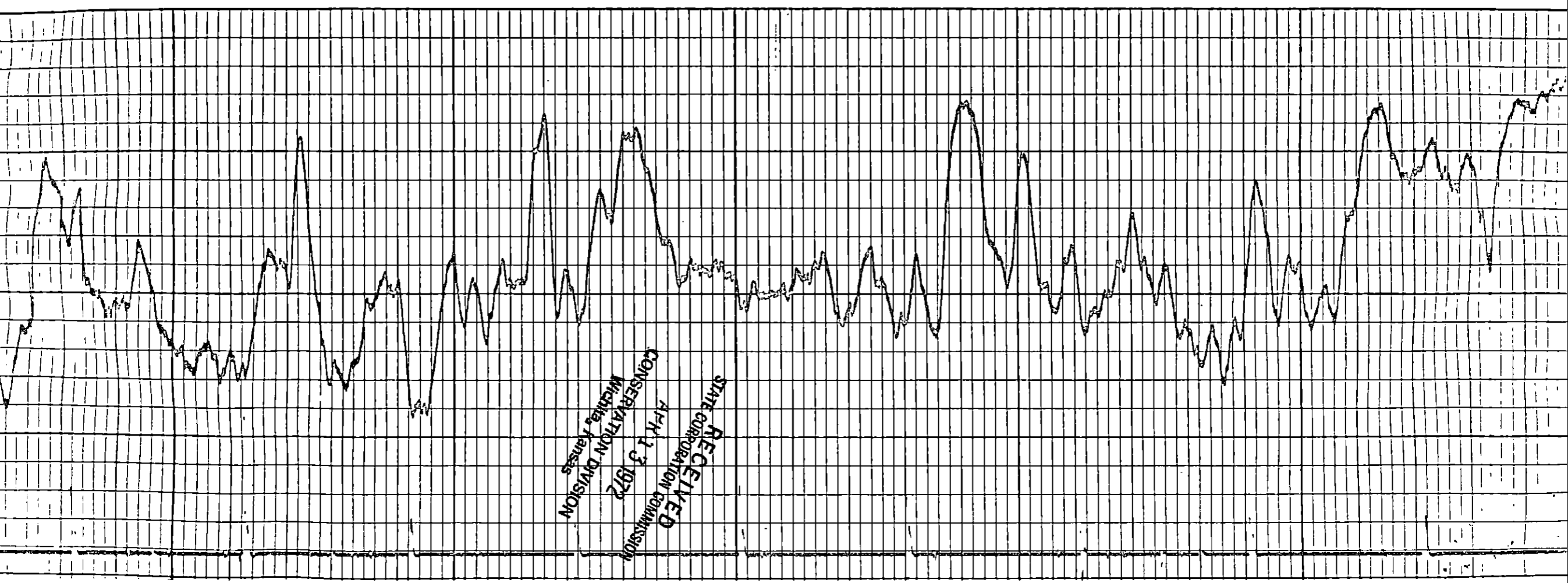
3200



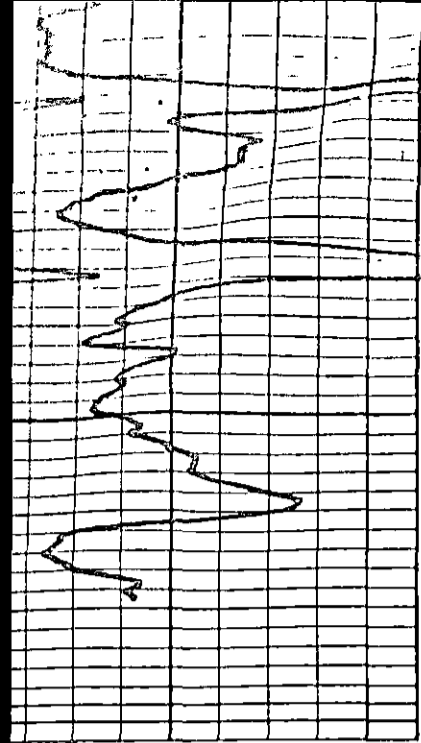


3400

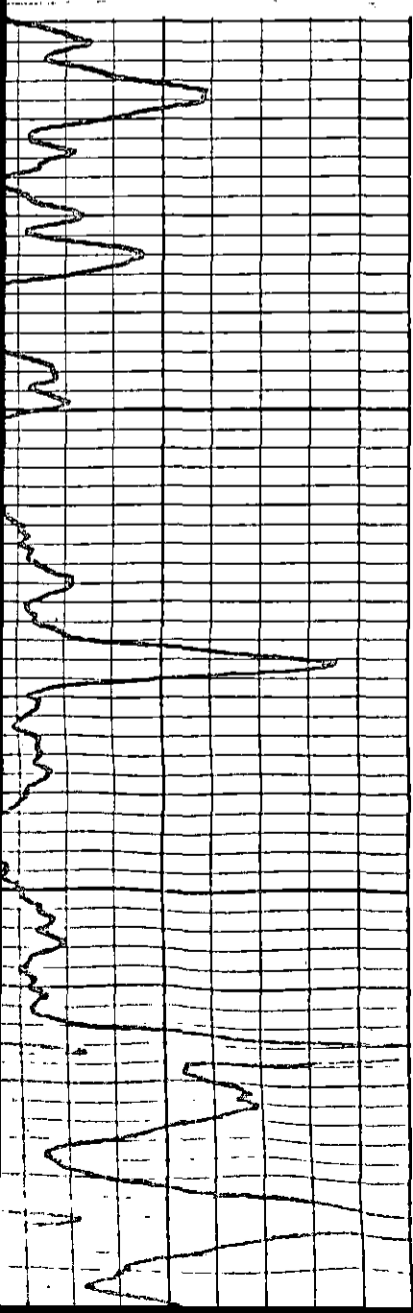
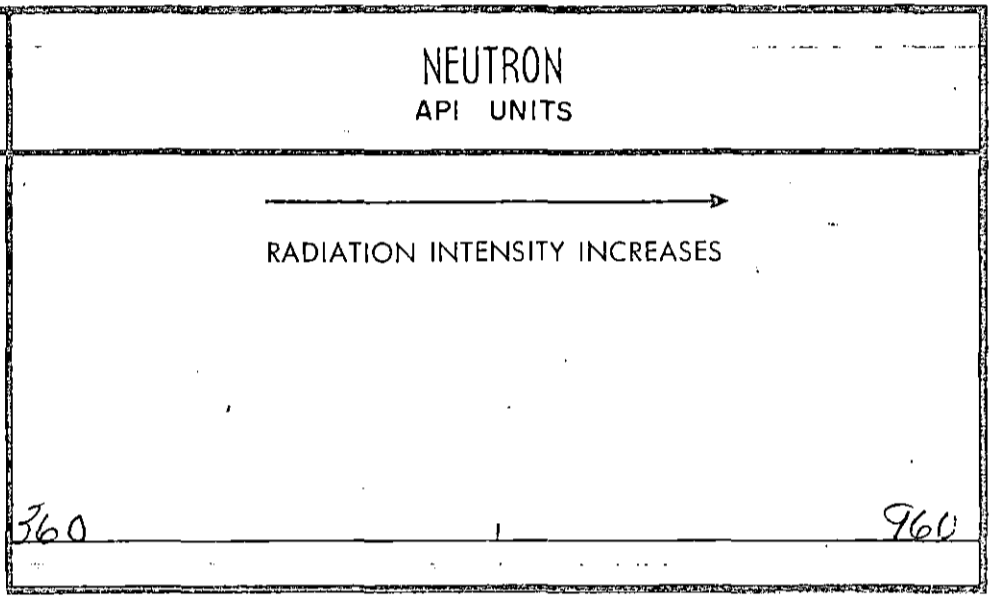
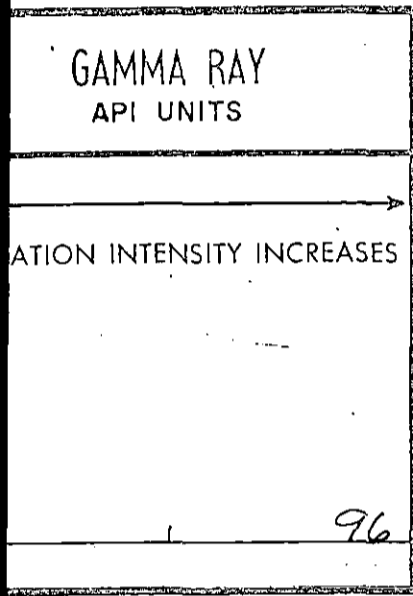
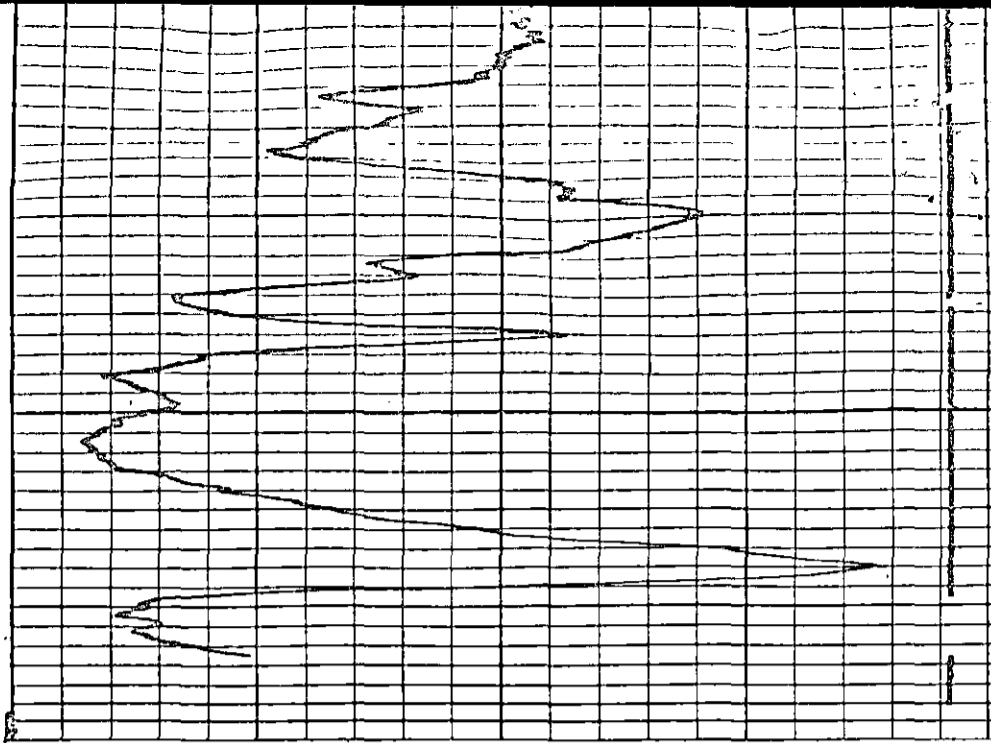
3300



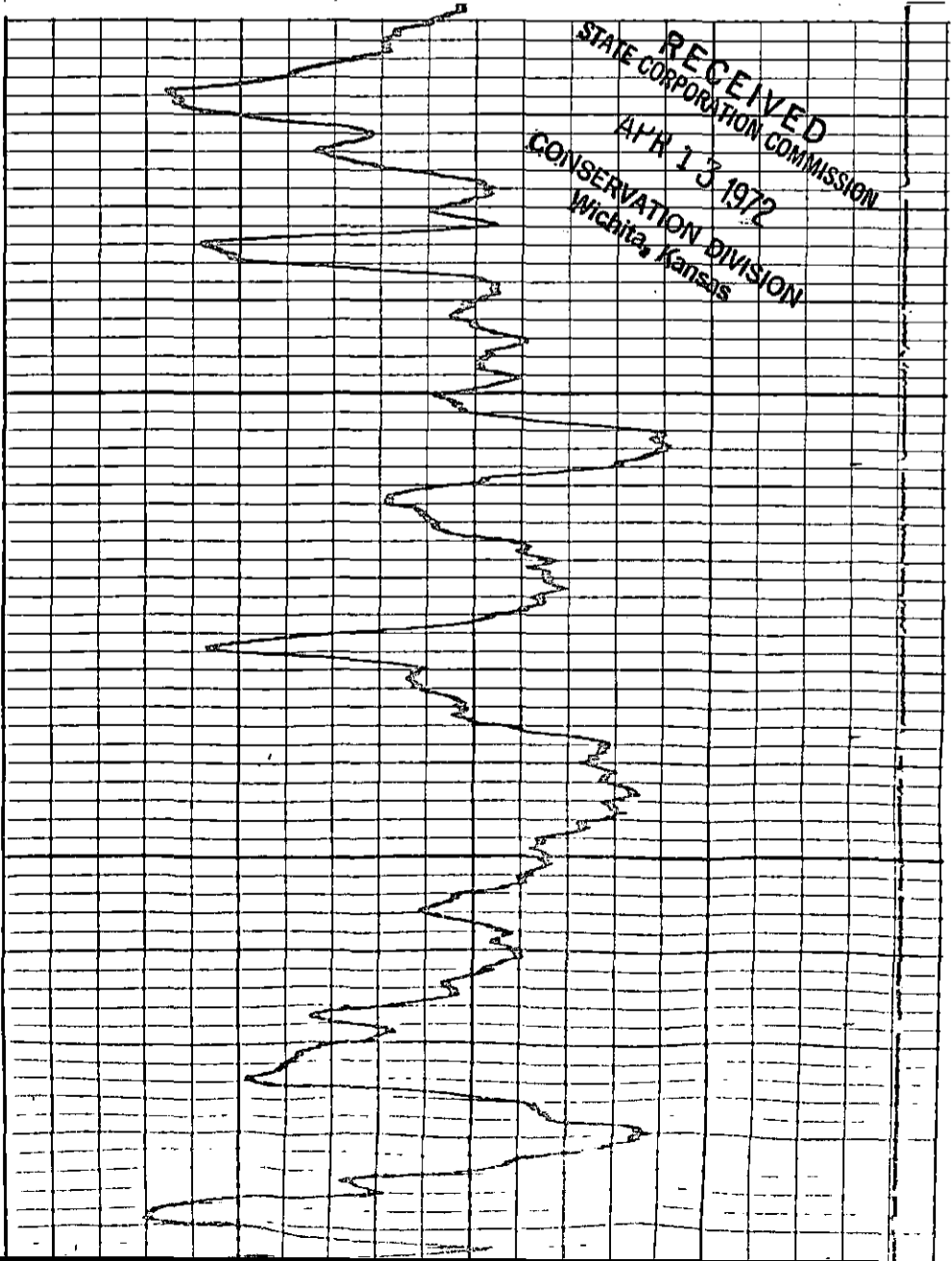
RECEIVED
STATE COOPERATION COMMISSION
APR 13 1972
CONSERVATION DIVISION
Wichita, Kansas



3500



3400



RECEIVED
STATE CORPORATION COMMISSION
APR 13 1972
CONSERVATION DIVISION
Wichita, Kansas

3500

APR
LOG
CRIP

TR	
STAND	224
CRUS	300
WIT	21
WGT	0
W	4.0
WSTG	8.0

W/IN	
STAND	825
CRUS	800
WIT	21
W	4.0
WGT	13.4
WSTG	12.3

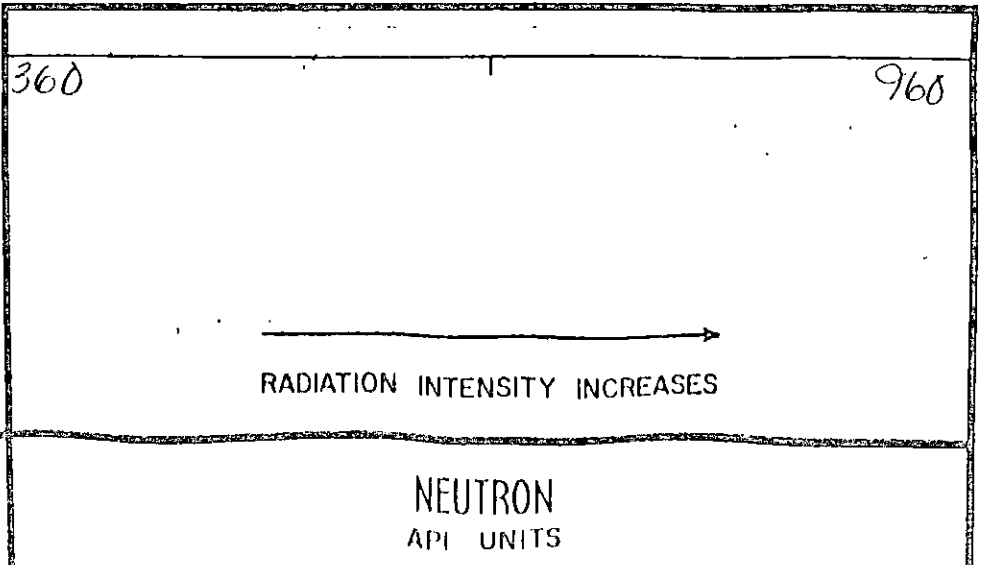
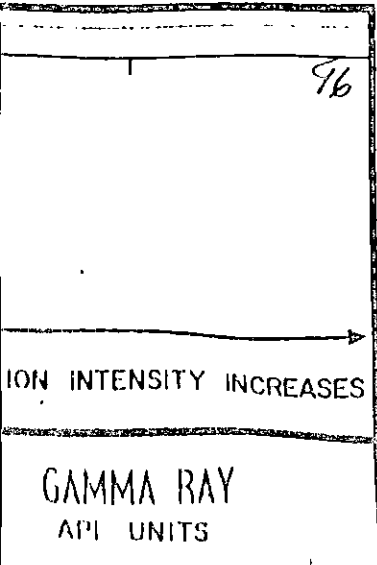
RECEIVED
STATE CORPORATION COMMISSION
APR 13 1972
CONSERVATION DIVISION
Wichita, Kansas

U/RN	
DI Stand	875
NS	800
UII	XI
AD	13.6
E	4.0
AS Ch	12.3

BEFORE
LOG
Calib

R	
DI Stand	224
NS	300
UII	XI
E	4.0
AD	0
AS Ch	9.0

RECEIVED
STATE CORPORATION COMMISSION
APR 13 1972
CONSERVATION DIVISION
Wichita, Kansas



ION INTENSITY INCREASES →		→ RADIATION INTENSITY INCREASES	
GAMMA RAY API UNITS	DEPTH	NEUTRON API UNITS	
Company CLINTON Oil Co Well "A" No 1 Richardson by STAFFORD ROUSAR		Drillers T.D. 3560 Log F.R. 3525 Log T.D. 3526 Elevations: K.B. N/A D.F. N/A G.L. N/A	

RECEIVED
 STATE CORPORATION COMMISSION
 APR 13 1972
 CONSERVATION DIVISION
 Wichita, Kansas