

15-185-20,020-0000

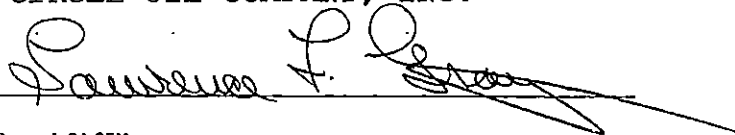
TO BE FILED WITH THE STATE CORPORATION COMMISSION PRIOR TO COMMENCEMENT OF WELL

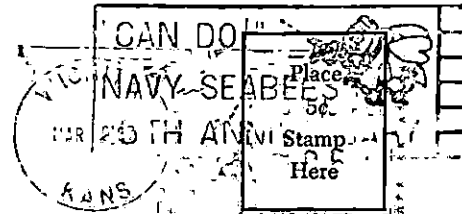
1. Operator Circle Oil Company, Inc. Address 500 Bitting Bldg., Wichita, Kansas
2. Lease name TIEPERMAN "B" Well No. 1 County Stafford
3. Well Location NW NW SE Sec. 6 Township 22S Range 12W
4. Well to be drilled 330 ft. from nearest lease line.
5. Drilling Contractor Sage Drilling Co. Address 500 Bitting Bldg., Wichita, Kansas
6. Type of equipment: Rotary Cable Tool Approx. date operation to begin March 13, 1967
7. Well to be drilled for Oil Gas Disposal Input Estimated Total Depth of Well 3700 ft.
8. Depth of deepest fresh water well within one mile of location 100 ft. If none exists, write NONE
9. Ground elevation at location is approx. flat ft. higher or _____ ft. lower than ground elevation at water well.
10. Depth of the deepest municipal water well within three miles of location _____ ft. If none exists, write NONE
NONE
11. Operator states that he will set surface pipe at least 25 ft. below all Tertiary or unconsolidated deposits and, taking into consideration differences in ground elevations, that the minimum depth necessary, to the best of his knowledge and belief, to protect all fresh water zones is 100 ft. and operator agrees to set surface pipe at this location to a depth of not less than 225 ft. Alternate 1 Alternate 2 .

REMARKS:

CIRCLE OIL COMPANY, INC.

Signature of Operator



State Corporation Commission of Kansas
Conservation Division
500 Insurance Building
212 North Market
Wichita, Kansas 67202

RECEIVED
STATE CORPORATION COMMISSION

MAR 13 1967

CONSERVATION DIVISION
Wichita, Kansas

(IF PREFERRED, MAIL IN ENVELOPE)