

15-185-12823-0000

STATE OF KANSAS  
STATE CORPORATION COMMISSION

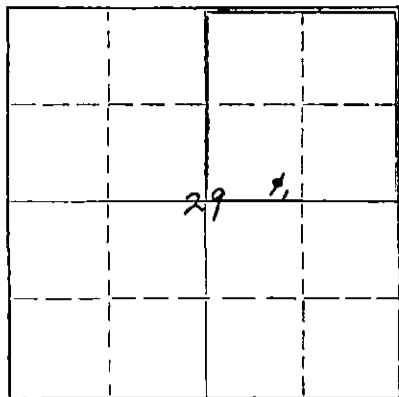
WELL PLUGGING RECORD

Give All Information Completely  
Make Required Affidavit  
Mail or Deliver Report to:  
Conservation Division  
State Corporation Commission  
211 No. Broadway  
Wichita, Kansas

Stafford County, Sec. 29 Twp. 23S Rge. (E) 12 (W)

Location as "NE/CNWxSWx" or footage from lines SE/4 SW/4 NE/4  
Lease Owner Skelly Oil Company  
Lease Name Zepha E. Riley Well No. 2  
Office Address Box 1650, Tulsa, Oklahoma  
Character of Well (completed as Oil, Gas or Dry Hole) Oil  
Date well completed September 27, 19 50  
Application for plugging filed February 26, 19 57  
Application for plugging approved February 27, 19 57  
Plugging commenced March 6, 19 57  
Plugging completed March 9, 19 57  
Reason for abandonment of well or producing formation Depleted Oil Well

NORTH



Locate well correctly on above Section Plat

If a producing well is abandoned, date of last production March 25, 19 57  
Was permission obtained from the Conservation Division or its agents before plugging was commenced? Yes

Name of Conservation Agent who supervised plugging of this well Mr. R. M. Brundage  
Producing formation Arbuckle Lime Depth to top 3856' Bottom 3860' Total Depth of Well 3860 Feet  
Show depth and thickness of all water, oil and gas formations.

OIL, GAS OR WATER RECORDS

CASING RECORD

FORMATION	CONTENT	FROM	TO	SIZE	PUT IN	PULLED OUT
Arbuckle Lime	Oil	3856'	3860'	8-5/8"	675' 0"	None
				5-1/2"	3866' 6"	3134' 0"

Describe in detail the manner in which the well was plugged, indicating where the mud fluid was placed and the method or methods used in introducing it into the hole. If cement or other plugs were used, state the character of same and depth placed, from feet to feet for each plug set.

Sand	3860' to 3845'
5 sacks of cement	3845' to 3810'
Mud	3810' to 260'
Rock	260' to 250'
20 sacks of cement	250' to 180'
Mud	180' to 25'
Rock bridge	25' to 17'
5 sacks of cement	17' to 5'
Surface soil	5' to 0'

4-9-57

REGISTRATION  
STATE CORPORATION COMMISSION

(If additional description is necessary, use BACK of this sheet)

Name of Plugging Contractor West Supply Company, Inc.  
Address Box 506, Chase, Kansas

STATE OF Kansas, COUNTY OF Reno, ss.  
H. E. Wamsley (employee of owner)

well, being first duly sworn on oath, says: That I have knowledge of the facts, statements, and matters herein contained and the log of the above-described well as filed and that the same are true and correct. So help me God.

(Signature)

Box 391, Hutchinson, Kansas (Address)

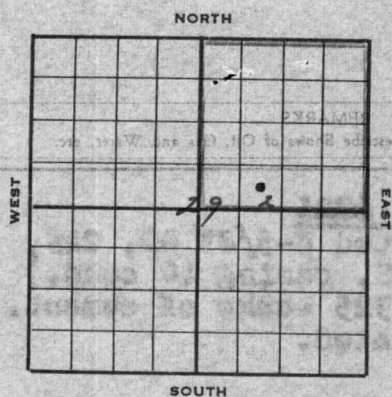
SUBSCRIBED AND SWORN TO before me this 8th day of April, 19 57

My commission expires April 7, 1959

Joseph L. Johnson Notary Public.

PLUGGING  
FILE SEC 29 T 23 R 12W  
BOOK PAGE 144 LINE 6

15-185-12823-0000



# SKELLY OIL COMPANY

## Well Record

Lease Name and No. **Zepha E. Riley #37935** Well No. **2** Elev. **1065 1/2 BH 1870 DF**  
 Lease Description **NE/4 Section 29-238-12W, Stafford County, Kansas**

Location made **August 31, 19 50** by **Keith E. Fuller**  
 feet from North line **330** feet from East line **990**  
 feet from South line **990** feet from West line of **Sec. 29**

Work com'd **9/3 19 50** Rig com'd **9/4 19 50** Drlg. com'd **9/4 19 50** Drlg. com'd **9/16 19 50**  
 Rig Contractor **Claude Wentworth Drilling Co., Inc.**  
 Drilling Contractor **Claude Wentworth Drilling Co., Inc., Tulsa, Oklahoma**  
 Rotary Drilling from **0'** to **3860'** Cable Tool Drilling from **To complete** to **wt.**  
 Commenced Producing **September 27, 19 50** Initial Prod. before shot or acid **Swab. 2 hrs. 99 BO no** Bbls.  
 Initial Prod. after shot or acid **POB 24 hrs. 116 BO 9 BW** Bbls.  
 Dry Gas Well Press. \_\_\_\_\_ Volume \_\_\_\_\_ Cu. ft.  
 Casing Head Gas Pressure \_\_\_\_\_ Volume \_\_\_\_\_ Cu. ft.  
 Braden Head (**8-5/8 x 5 1/2" OD**) Gas Pressure \_\_\_\_\_ Volume \_\_\_\_\_ Cu. ft.  
 Braden Head ( \_\_\_\_\_ ) Gas Pressure \_\_\_\_\_ Volume \_\_\_\_\_ Cu. ft.

PRODUCING FORMATION **Arbuckle Lime** Top **3856'** Bottom **3860'** TOTAL DEPTH **3860'**

### CASING RECORD

OD Size	Wt.	Thds.	Where Set	PULLED OUT			LEFT IN			KIND	Cond'n	CEMENTING	
				Jts.	Feet	In.	Jts.	Feet	In.			Sacks Used	Method Employed
8-5/8	24	PE	681'				17	675	0	R3 SS C	C	325	Halliburton
5-1/2	14	SR	3856'				122	3886	6	R40 R2 SS A	A	100	Halliburton
(8-5/8" OD casing set 6' in derrick and 5 1/2" cased to derrick floor)													
Used 1 - 5 1/2" OD Larkin Packer Shoe													

Liner Set at \_\_\_\_\_ Length \_\_\_\_\_ Perforated at \_\_\_\_\_  
 Liner Set at \_\_\_\_\_ Length \_\_\_\_\_ Perforated at \_\_\_\_\_  
 Packer Set at \_\_\_\_\_ Size and Kind \_\_\_\_\_  
 Packer Set at \_\_\_\_\_ Size and Kind \_\_\_\_\_

### SHOT OR ACID TREATMENT RECORD

Date	FIRST		SECOND		THIRD		FOURTH	
	Ft. and	Ft.	Ft. and	Ft.	Ft. and	Ft.	Ft. and	Ft.
Acid Used								
Size Shot								
Shot Between								
Size of Shell								
Put in by (Co.)								
Length anchor								
Distance below Cas'g								
Damage to Casing or Casing Shoulder								

### SIGNIFICANT GEOLOGICAL FORMATIONS

NAME	Top	Bottom	GAS		OIL		REMARKS
			From	To	From	To	
Heebner Shale	3245'						
Toronto Lime	3265'						
Douglas Sand	3281'						
Brown Lime	3383'						
Lansing Lime	3417'						
Conglomerate	3696'						
Viola Lime	3729'						
Simpson Shale	3793'						
Arbuckle Lime	3855'				3855'	3860'	Good oil sat. and odor

### CLEANING OUT RECORDS

	DATE COMMENCED	DATE COMPLETED	PROD. BEFORE	PROD. AFTER	REMARKS
1st					See Reverse for other details.
2nd					" " " " "
3rd					" " " " "
4th					" " " " "

### PLUGGING BACK AND DEEPENING RECORDS

	Date Commenced	Date Completed	No. Feet Plugged Back or Deepened	Prod. Before	Prod. After	REMARKS
1st						See Reverse for other details.
2nd						" " " " "
3rd						" " " " "
4th						" " " " "

(See Reverse for Record of Formation)

BOOK PAGE 148 LINE 5  
 LIFE 280 281 282 283 284 285  
 DRILLING

RECORD OF FORMATIONS

FORMATION	TOP	BOTTOM	REMARKS
Surface sand and shells	0	250	
Red bed and shells	250	672	
Anhydrite	672	681	TOP ANHYDRITE 672'
			Set and cemented 5 1/8" OD, 24' P.E., R-3, S.S. casing (C cond.) at 681' with 325 sacks of cement. Cement circulated.
Anhydrite	681	700	
Red bed and shale	700	1025	
Salt and shale	1025	1150	
Shale and shells	1150	1620	
Lime	1620	2065	
Lime and shale	2065	2445	
Shale	2445	2515	
Shale and lime	2515	2650	
Lime	2650	2770	
Broken lime and shale	2770	2930	
Lime and shale	2930	2980	
Lime	2980	3140	
Broken lime and shale	3140	3190	
Lime	3190	3340	
Broken lime and shale	3340	3390	
Shale	3390	3405	
Lime and shale	3405	3440	
Lime	3440	3720	
Lime and chert	3720	3790	
Shale, lime, and chert	3790	3803	
Lime	3803	3855	
Fine medium crystalline dolomite	3855	3860	Good oil saturation and good odor
TOTAL DEPTH		3860'	Set and cemented 5 1/2" OD, 14 1/2, 8rd. thd., R-2, H-40, Pittsburgh S.S. casing (A cond.) at 3856' with 100 sacks of cement. Finished cementing at 12:20 a.m. 9/17/50.

Rigged up cable tools, bailed and swabbed the hole dry and 5 1/2" casing tested OK. On September 21, drilled cement plug and cleaned out to bottom, good show of oil. Bailed off bottom 6 hours to clean hole; then swabbed through 5 1/2" casing to bottom 2 hours, 99 barrels of oil and 4 barrels of water. Swabbed off bottom 4 hours, 63 barrels of oil and 3 barrels of water. On September 22, swabbed off bottom 3 hours, 46 barrels of oil and 2 barrels of water. Ran 2" tubing and rods and moved out cable tools to install pumping equipment.

DEPTH	ANGLE OF DEFLECTION
1551'	0 degrees
1006'	0 "
1057'	0 "
1000'	0 "
1250'	0 "
10051'	0 "
15391'	0 "
2250'	0 "
1005'	0 "
1002'	1/2 "

DEPTH	REMARKS
1002'	
1005'	
2250'	
15391'	
10051'	
1250'	
1000'	
1057'	
1006'	
1551'	

DATE COMPLETED	DATE COMMENCED	PROD. BEFORE	PROD. AFTER	REMARKS
				See Reverse for other details.
				" " " " " "
				" " " " " "
				" " " " " "

DATE COMPLETED	DATE COMMENCED	NO. PITS PLUGGED	NO. PITS DEEPENED	REMARKS
				See Reverse for other details.
				" " " " " "
				" " " " " "
				" " " " " "

(See Reverse for Record of Formations)

Subbook  
 PLUGGING  
 FILE SEC. 24 T 23 R 12 W  
 BOOK PAGE 144 LINE 6

15-185-12823-0000

# SKELLY OIL COMPANY

## REPORT OF CHANGE IN WELL RECORD

Give complete description of all cleaning out, deepening, plugging back and fishing jobs, changes in casing, material lost in hole, etc., not recorded in original well record.

LEASE E. B. Riley WELL NO. 2 DISTRICT Western Kansas  
 SEC. 29 T. 23N R. 12W COUNTY Stafford JOB NO. \_\_\_\_\_  
 SURVEY \_\_\_\_\_ BLOCK \_\_\_\_\_ STATE Kansas

CLEANING OUT RECORD				PLUGGING BACK OR DEEPENING RECORD			
Date commenced.....	19.....			Date commenced.....	March 6, 19 57		
Date completed.....	19.....			Date completed.....	March 9, 19 57		
Cleaned out from.....	to..... T. D.....			Plugged back or deepened from.....	3860' to 0' T. D. P & A		
Prod. before.....	bbls. oil.....	bbls. water.....	cu. ft. gas.....	Prod. before.....	1 1/2 bbls. oil.....	28 bbls. water.....	cu. ft. gas.....
Prod. after.....	bbls. oil.....	bbls. water.....	cu. ft. gas.....	Prod. after.....	bbls. oil.....	bbls. water.....	cu. ft. gas.....
Kind of tools used:.....				Kind of tools used:.....			
Tools owned by:.....				Tools owned by:.....	West Supply Company		

### SHOT RECORD

Date	Size shot	Shot between	Size of shell	Put in by (Co.)	Length anchor	Distance below casing	Damage to casing or casing shoulder

### CHANGES IN CASING RECORD

SIZE	Wt.	Thds.	Where Set	PULLED OUT			LEFT IN			KIND	Cond'n	CEMENTING	
				Jts.	Feet	In.	Jts.	Feet	In.			Sacks Used	Method Employed
5-1/2"	140	2R	3856'	90	3134	0	24	752	6	R40 R2 00 0			

Liner set at..... Length..... Perforated at.....  
 Packer set at..... Size and kind.....

**PLUGGING**  
 FILE SEC. 29 T. 23 R. 12W  
 BOOK PAGE 144 LINE 6

APR 1957  
 DIVISION  
 Wichita, Kansas

*[Handwritten Signature]*

Superintendent.

REMARKS (Give review of work accomplished and any other comment of interest)

On March 6, 1957, moved in machine of West Supply Company and plugged the well as follows:

Mud	3860' to 3845'
5 sacks of cement	3845' to 3810'
Shot off 5 1/2" casing at 3230', 3132', and pulled 3134' of 5 1/2" MON, 1 1/2", BR, H-40, R-2, A.S. casing (0 cond.)	
Mud	3810' to 260'
Rock	260' to 250'
20 sacks of cement	250' to 180'
Mud	180' to 25'
Rock bridge	25' to 17'
5 sacks of cement	17' to 5'
Surface soil	5' to 0'

Plugged and abandoned March 9, 1957.

### RECORD OF FORMATIONS

FORMATION	TOP	BOTTOM	REMARKS
			Indicate Casing Points, Describe Shows of Oil, Gas and Water, etc.