

STATE OF KANSAS
STATE CORPORATION COMMISSION

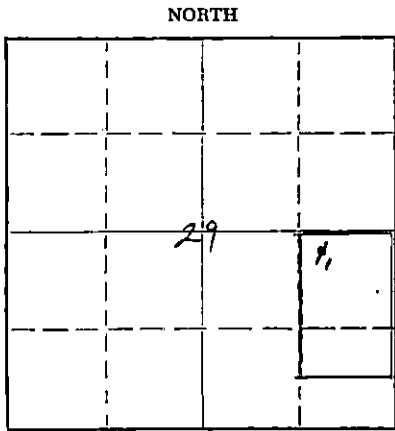
Get All Information Completely
Make Required Affidavit
Mail or Deliver Report to:
Conservation Division
State Corporation Commission
211 No. Broadway
Wichita, Kansas

15-185-00612-0000

WELL PLUGGING RECORD

Stafford County, Sec. 29 Twp. 23S Rge. (E) 12 (W)

Location as "NE/CNW/SW" or footage from lines NW/4, NE/4, SE/4
Lease Owner Skelly Oil Company
Lease Name Wm. E. Crane Well No. 1
Office Address P. O. Box 1650, Tulsa, Oklahoma
Character of Well (completed as Oil, Gas or Dry Hole) Oil
Date well completed April 5, 1950
Application for plugging filed May 3, 1957
Application for plugging approved May 6, 1957
Plugging commenced May 1, 1957
Plugging completed May 4, 1957
Reason for abandonment of well or producing formation Depleted oil well



Locate well correctly on above Section Plat

If a producing well is abandoned, date of last production March 3, 1957
Was permission obtained from the Conservation Division or its agents before plugging was commenced? Yes

Name of Conservation Agent who supervised plugging of this well Mr. R. M. Brundage
Producing formation Arbuckle Lime Depth to top 3856 1/2 Bottom 3865' Total Depth of Well 3865 Feet
Show depth and thickness of all water, oil and gas formations.

OIL, GAS OR WATER RECORDS

CASING RECORD

FORMATION	CONTENT	FROM	TO	OD SIZE	PUT IN	PULLED OUT
Arbuckle Lime	Oil	3856 1/2'	3865'	8-5/8"	694' 0"	None
					3887' 0"	3298'

Describe in detail the manner in which the well was plugged, indicating where the mud fluid was placed and the method or methods used in introducing it into the hole. If cement or other plugs were used, state the character of same and depth placed, from feet to feet for each plug set.

Sand	3865' to 3840'
5 sacks of cement	3840' to 3800'
Mud	3800' to 280'
Rock bridge	280' to 270'
20 sacks of cement	270' to 200'
Mud	200' to 25'
Rock bridge	25' to 13'
5 sacks of cement	13' to 5'
Surface soil	5' to 0'

RECEIVED
STATE CORPORATION COMMISSION
MAY 17 1957
CONSERVATION DIVISION
Wichita, Kansas
5-17-57

(If additional description is necessary, use BACK of this sheet)

Name of Plugging Contractor West Supply Company
Address Chase, Kansas

STATE OF Kansas, COUNTY OF Reno, ss.
H. E. Wamsley (employee of owner) or (owner or operator) of the above-described well, being first duly sworn on oath, says: That I have knowledge of the facts, statements, and matters herein contained and the log of the above-described well as filed and that the same are true and correct. So help me God.

(Signature) [Signature]
Box 391, Hutchinson, Kansas
(Address)

SUBSCRIBED AND SWORN TO before me this 16th day of May, 1957.

My commission expires April 7, 1959 [Signature] Notary Public.

PLUGGING
FILE SEC. 29 T. 23 R. 12W
BOOK PAGE 10 LINE 41

15-185-00612-0000

SKELLY OIL COMPANY

REPORT OF CHANGE IN WELL RECORD

Give complete description of all cleaning out, deepening, plugging back and fishing jobs, changes in casing, material lost in hole, etc., not recorded in original well record.

W. F. Crane
 LEASE
 SEC. 29 T. 23 R. 12W
 SURVEY _____ BLOCK _____

1 Western Kansas
 WELL NO. DISTRICT
Seafford 2518
 COUNTY JOB NO.
 STATE Kansas

CLEANING OUT RECORD				PLUGGING BACK OR DEEPENING RECORD			
Date commenced.....	19	Date commenced.....	May 1, 19	57	Date completed.....	May 4, 19	57
Date completed.....	19	Plugged back or deepened from.....	3865' to 0'	T.D. P & A	Prod. before.....	5 bbls. 200 bbls.	cu. ft. gas
Cleaned out from..... to..... T.D.		Prod. after.....	bbls. bbls.	cu. ft. gas	Kind of tools used:.....		
Prod. before.....	bbls. bbls. cu. ft. gas	Kind of tools used:.....					
Prod. after.....	bbls. bbls. cu. ft. gas	Tools owned by:.....	West Supply Company				

SHOT RECORD

Date	Size shot	Qts.	Qts.	Qts.	Qts.
Shot between	Ft. and Ft.	Ft. and Ft.	Ft. and Ft.	Ft. and Ft.	Ft. and Ft.
Size of shell					
Put in by (Co.)					
Length anchor					
Distance below casing					
Damage to casing or casing shoulder					

CHANGES IN CASING RECORD

SIZE	Wt.	Thds.	Where Set	PULLED OUT			LEFT IN			KIND	Cond'n	CEMENTING	
				Jts.	Feet	In.	Jts.	Feet	In.			Sacks Used	Method Employed
5 1/2" OD	14.7	38		10	1298	0	16	389	0	140	92	HW	C

Liner set at..... Length..... Perforated at.....
 Packer set at..... Size and kind.....

RECEIVED
 COMMISSION

MAY 17 1957

PLUGGING
 FILE SEC. 29 T. 23 R. 12W
 BOOK PAGE 10 LIN. 41

CONSERVATION DIVISION
 WICHITA, KANSAS

[Handwritten Signature]

Superintendent.

REMARKS (Give review of work accomplished and any other comment of interest) On May 1, 1957,

moved in machine of West Supply and plugged the well as follows:

Sand	3865'	to	3840'
5 sacks of cement	3840'	to	3800'
Shot off 5 1/2" casing at 3300' and pulled 3298' of 5 1/2" O.D., 1 1/4" I.D., R-2, H-40, R.E.W. steel casing (6 cond.).			
Mud	3800'	to	280'
Rock bridge	280'	to	270'
20 sacks of cement	270'	to	200'
Mud	200'	to	25'
Rock bridge	25'	to	13'
5 sacks of cement	13'	to	5'
Surface soil	5'	to	0'

Plugged and abandoned 5/4/57

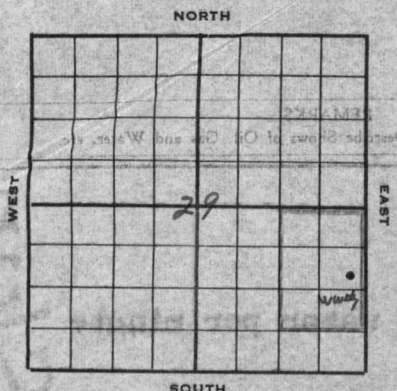
RECORD OF FORMATIONS

FORMATION	TOP	BOTTOM	REMARKS
			Indicate Casing Points, Describe Shows of Oil, Gas and Water, etc.

1
 2
 3
 4
 5
 6
 7
 8
 9
 10
 11
 12
 13
 14
 15
 16
 17
 18
 19
 20
 21
 22
 23
 24
 25
 26
 27
 28
 29
 30
 31
 32
 33
 34
 35
 36
 37
 38
 39
 40
 41
 42
 43
 44
 45
 46
 47
 48
 49
 50

15-185-00612-0000

SKELLY OIL COMPANY



Water Well Record

Lease Name and No. **Wm. E. Crane** Well No. **1** Elev. _____
 Lease Description **NE/4 SE/4 and N/2 SE/4 SE/4 Sec. 29-23S-12W, Stafford County, Kansas (60 Acres)**
 Location made **Dec. 18, 19 50** by **H. V. Morse**
1095 feet from North line **210** feet from East line **SB/4**
 feet from South line _____ feet from West line of **Sec. 29**

Work com'd **12/18 19 50** Rig comp'd _____ Drlg. com'd **12/18 19 50** Drlg. comp'd **12/18 19 50**

Rig Contractor _____
 Drilling Contractor **Epoch & Burrows Water Well Company, Holyrood, Kansas**
 Rotary Drilling from _____ to _____ Cable Tool Drilling from **0'** to **72'**

Commenced Producing **December 18, 19 50** Initial Prod. before shot or acid _____ Bbbs.
 Initial Prod. after shot or acid **100 barrels wtr/day** Bbbs.

Dry Gas Well Press _____ Volume _____ Cu. ft.
 Casing Head Gas Pressure _____ Volume _____ Cu. ft.
 Braden Head (_____ Size) Gas Pressure _____ Volume _____ Cu. ft.
 Braden Head (_____ Size) Gas Pressure _____ Volume _____ Cu. ft.

PRODUCING FORMATION **Water bearing sand** Top **57'** Bottom **72'** TOTAL DEPTH **72'**

CASING RECORD

Size	Wt.	Thds.	Where Set	PULLED OUT			LEFT IN			KIND	Cond'n	Sacks Used	CEMENTING Method Employed
				Jts.	Feet	In.	Jts.	Feet	In.				
7"OD	24	10V	72'				6	72	3	Ge R2 SS C	0		
(7" casing perforated from 53' to 72')													

Liner Set at _____ Length _____ Perforated at _____
 Liner Set at _____ Length _____ Perforated at _____
 Packer Set at _____ Size and Kind _____
 Packer Set at _____ Size and Kind _____

SHOT OR ACID TREATMENT RECORD

Date	FIRST		SECOND		THIRD		FOURTH	
	Ft. and	Ft.	Ft. and	Ft.	Ft. and	Ft.	Ft. and	Ft.
Acid Used								
Size Shot								
Shot Between								
Size of Shell								
Put in by (Co.)								
Length anchor								
Distance below Cas'g								
Damage to Casing or Casing Shoulder								

SIGNIFICANT GEOLOGICAL FORMATIONS

NAME	Top	Bottom	GAS		OIL		REMARKS
			From	To	From	To	

CLEANING OUT RECORDS

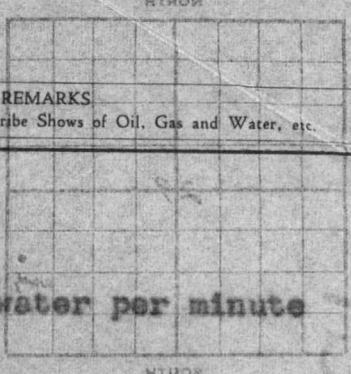
	DATE COMMENCED	DATE COMPLETED	PROD. BEFORE	PROD. AFTER	REMARKS
1st					See Reverse for other details.
2nd					" " " " "
3rd					" " " " "
4th					" " " " "

PLUGGING BACK AND DEEPENING RECORDS

	Date Commenced	Date Completed	No. Feet Plugged Back or Deepened	Prod. Before	Prod. After	REMARKS
1st						See Reverse for other details.
2nd						" " " " "
3rd						" " " " "
4th						" " " " "

(See Reverse for Record of Formation)

KENTON OIL COMPANY RECORD OF FORMATIONS



FORMATION Well Record TOP BOTTOM REMARKS Indicate Casing Points, Describe Shows of Oil, Gas and Water, etc.

Surface soil and sand	0	11	
clay	11	38	
Fine sand	38	57	
Sandy clay and gyp	57	59	5 gallons of water per minute
Sand rock and shells	59	65	
Yellow clay	65	66	Water
Gravel	66	69	
Grey clay	69	72	Water
Fine sand			

Set 7", 24, 10 S.S. steel casing at 72', Dumped crushed rock from 6' to 72' to keep out fine sand. Well pumped 100 barrels water daily.

TOTAL DEPTH 72'

Initial Prod. before shot or acid
Initial Prod. after shot or acid
Volume
Volume
Volume
Volume
Volume
Volume

PLUGGING
FILE SEC 29 T 23
BOOK PAGE 10
L 41

CASING RECORD

Casing No.	Type	Size In.	Length Feet	Sigsbee No.	RIGGED		RIGGED		Remarks
					In.	Feet	In.	Feet	

SHOT OR ACID TREATMENT RECORD

Date	Shot Size	Shot Size	Shot Size	Shot Size	Shot Size	Shot Size	Shot Size	Shot or Acid	
								From	To

SIGNIFICANT GEOLOGICAL FORMATIONS

NAME	Top	Bottom	GAS		OIL		REMARKS
			From	To	From	To	

CLEANING OUT RECORDS

Date	DATE COMPLETED	DATE COMPLETED	PROD. BEFORE	PROD. AFTER	REMARKS

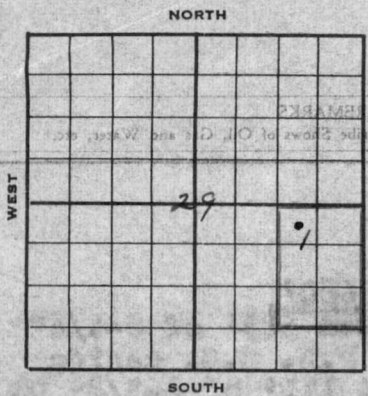
PLUGGING BACK AND DEEPENING RECORDS

Date	Date Completed	Date Completed	Prod. Before	Prod. After	REMARKS

MADE IN U.S.A.
CONSERVATION DIVISION
MAY 17 1957
STATE OIL FIELD COMMISSION

See Reverse for Record of Formations

SKELLY OIL COMPANY



Well Record
 Lease Name and No. Mr. E. Crane #37664 Well No. 1 Elev. 1861' BH
 Lease Description N³/₄ SE¹/₄ and N¹/₂ SE¹/₄ Sec. 29-23³-12W, Stafford County, Kansas (60 acres)

Location made March 6, 19 50 by R. G. Conrow
330 feet from North line 990 feet from East line SE¹/₄
 feet from South line feet from West line of Sec. 29

Work com'd 3/9 19 50 Rig com'd 3/11 19 50 Drlg. com'd 3/11 19 50 Drlg. comp'd 3/28 19 50

Rig Contractor Claude Wentworth Drilling Company, Inc.

Drilling Contractor Claude Wentworth Drilling Co., Inc., Tulsa, Oklahoma

Rotary Drilling from Top to 3865' Cable Tool Drilling from To complete to

Commenced Producing April 5, 19 50 Initial Prod. before shot or acid Swab. 151 BO in 3 hrs. Bbls.
 Initial Prod. after shot or acid POB 8 hrs. w/ Depthograph Bbls.
15 BO 7 hrs for ind. prod. 3264 BO a 457 BO

Dry Gas Well Press Volume Cu. ft.

Casing Head Gas Pressure Volume Cu. ft.

Braden Head (8-5/8" Size 5 1/2" OD) Gas Pressure Volume Cu. ft.

Braden Head (Size) Gas Pressure Volume Cu. ft.

PRODUCING FORMATION Arbuckle Line Top 3856 1/2' Bottom 3865' TOTAL DEPTH 3865'

CASING RECORD

OD Size	Wt.	Thds.	Where Set	PULLED OUT			LEFT IN			KIND	Cond'n	CEMENTING	
				Jts.	Feet	In.	Jts.	Feet	In.			Sacks Used	Method Employed
8-5/8"	24	8V					6	111	0	H1 LW 0			
8-5/8"	19	PA	698'				14	58	0	R3 SS C	400	Halliburton	
5-1/2"	14	SA	3856 1/2'				122	388	0	H40 R2 NEW A	100	Halliburton	
(8-5/8" casing set 5' in collar and 5 1/2" cased to derrick floor)													
Used 1 - 5 1/2" Howo Packer shoe													

Liner Set at Length Perforated at

Liner Set at Length Perforated at

Packer Set at Size and Kind

Packer Set at Size and Kind

SHOT OR ACID TREATMENT RECORD

	FIRST		SECOND		THIRD		FOURTH	
	Date		Date		Date		Date	
Acid Used								
Size Shot		Gals. Qts.		Gals. Qts.		Gals. Qts.		Gals. Qts.
Shot Between	Ft. and Ft.		Ft. and Ft.		Ft. and Ft.		Ft. and Ft.	
Size of Shell								
Put in by (Co.)								
Length anchor								
Distance below Cas'g								
Damage to Casing or Casing Shoulder								

SIGNIFICANT GEOLOGICAL FORMATIONS

NAME	Top	Bottom	GAS		OIL		REMARKS
			From	To	From	To	
Hoebner shale	3248'						
Brown Line	3289'						
Lansing Lime	3416'				3573'	3581'	Fair por. & some sat. sand
Conglomerate	3701'						
Viola Lime	3735'						
Simpson shale	3792'						
Arbuckle Line	3855'				3855'	3861'	Slit. por. and stain
					3861'	3865'	Por. & saturated

CLEANING OUT RECORDS

	DATE COMMENCED	DATE COMPLETED	PROD. BEFORE	PROD. AFTER	REMARKS
1st					See Reverse for other details.
2nd					" " " " "
3rd					" " " " "
4th					" " " " "

PLUGGING BACK AND DEEPENING RECORDS

	Date Commenced	Date Completed	No. Feet Plugged Back or Deepened	Prod. Before	Prod. After	REMARKS
1st						See Reverse for other details.
2nd						" " " " "
3rd						" " " " "
4th						" " " " "

(See Reverse for Record of Formation)

RECORD OF FORMATIONS

FORMATION	TOP	BOTTOM	REMARKS
Surface and sand	0	330	
Sand	330	382	
Shells, red bed and anhydrite	382	698	
Beamed hole to 12-1/4" OD			Set and cemented 5 1/2" OD, 14' th., R-3, H-40, R.E.W. steel casing at 3856 1/2' with 100 sacks of cement. Cementing at 4:30 a.m. 3/30/50.
Anhydrite	698	725	
Shale and shells	725	1285	
Salt and shale	1285	1370	
Shale and lime	1370	1595	
Lime	1595	1840	
Lime and shale	1840	2830	
Shale	2830	2930	
Sand	2930	2960	
Shale	2960	2980	
Shells and shale	2980	3030	
Lime	3030	3105	
Lime and shale	3105	3223	
Lime	3223	3260	
Shale and lime	3260	3430	
Lime	3430	3504	
Grey and brown oolitic lime	3504	3511	Fair porosity and saturation, good odor. Ran Halliburton drill stem test, packer set 3504', open 41 mins., recovered 30' of mud and water, no gas.
Lime	3511	3542	
Buff and grey oolitic lime	3542	3546	Spotted saturation
Lime	3546	3553	
Buff and grey oolitic lime	3553	3562	Spotted saturation
Lime	3562	3573	
Grey and brown oolitic lime	3573	3581	Fair porosity and some saturation, good odor. Ran Halliburton drill stem test, packer set at 3542', open 1 hour, recovered 60' of slightly heavy oil cut mud, no gas.
Lime	3581	3740	
Chert, lime, and shale	3740	3792	
Simpson shale	3792	3821	
Brown and grey Simpson sand	3821	3827	Good stain, fair porosity, and good odor in samples.
Grey sand w/ green shale and some Simpson dolomite	3827	3842	No show. Ran Halliburton drill stem test with packer set at 3822', open 45 minutes, recovered 15' of drilling mud, no oil, gas, or water.
Simpson shale	3842	3855	
Finely crystalline dolomite	3855	3861	Slight porosity and stain
Brown coarsely crystalline dolomite	3861	3885	bedded and saturated. Ran Halliburton drill stem test with packer set at 3857', open 40 minutes, recovered 2700' of clean 38 degree gravity oil and 120' of oil cut mud.
TOTAL DEPTH		3865'	
<p>Set and cemented 5 1/2" OD, 14' th., R-3, H-40, R.E.W. steel casing at 3856 1/2' with 100 sacks of cement. Cementing at 4:30 a.m. 3/30/50.</p> <p>Rigged up cable tools, bailed the hole dry, and 5 1/2" casing tested OK on April 1. Loaded hole with 58 barrels of water, drilled cement plug and cleaned out to bottom on April 2. Swabbed through 5 1/2" casing 3 hours, 151 barrels of oil and 58 barrels of water (used to load hole) swabbing to 2200' from top of hole at end of test. Let set 2 hours and hole filled to 750' of top. Bailed hole clean with 3350' of fluid in hole, showing a trace of Arbutle water. On April 4, ran 2" tubing and rods and PCH 3 hours, 84 1/2 barrels of oil and 32 barrels of water.</p> <p>On April 5, PCH 3 hours with Depthograph on private test, 73 barrels of oil and 7 barrels of water for an indicated productivity of 5264 barrels of oil and 497 barrels of water. This well is not prorated.</p> <p>PLUGGING BACK AND DEPRESSING RECORDS</p> <p>0085' to 3855' intervals from 250' to 3800' tests were taken at 10' intervals, with no deviation from vertical noted.</p> <p>April 3, 1950</p> <p>Water analysis by Halliburton - Hydrogen sulfide - strong; Specific gravity - 1.024; Total solids - 36,000 ppa; Chlorides - 21,600 ppa; Sulfates 2,400 ppa; pH - 8.0. This data compares with that of Arbutle water.</p>			