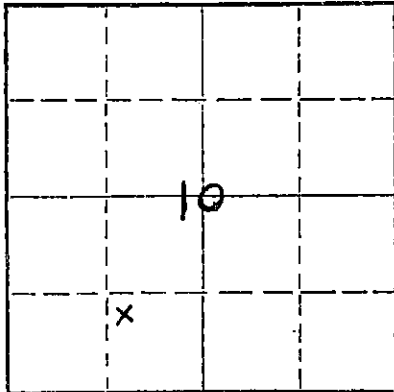


STATE OF KANSAS
STATE CORPORATION COMMISSION

Form CP-4

Give All Information Completely
Make Required Affidavit
Mail or Deliver Report to:
Conservation Division
State Corporation Commission
P. O. Box 17027
Wichita, Kansas 67217
NORTH

WELL PLUGGING RECORD



Locate well correctly on above
Section Plat

Stafford County. Sec. 10 Twp. 22 Rge. 12 (E) (W)
Location as "NE/CNW/SW" or footage from lines NW SE SW
Lease Owner Clinton Oil Company
Lease Name J. Denker #6 Well No.
Office Address Great Bend, Kansas 67530
Character of Well (completed as Oil, Gas or Dry Hole) Oil
Date well completed 7/50 19
Application for plugging filed 12/8/71 19
Application for plugging approved 12/9/71 19
Plugging commenced 4/1/72 19
Plugging completed 4/5/72 19
Reason for abandonment of well or producing formation depleted.

If a producing well is abandoned, date of last production 11/67 19
Was permission obtained from the Conservation Division or its agents before plugging was commenced? yes

Name of Conservation Agent who supervised plugging of this well Biberstein
Producing formation Arbuckle Depth to top 3657 Bottom 3662 Total Depth of Well 3662 Feet
Show depth and thickness of all water, oil and gas formations. (perfs)

OIL, GAS OR WATER RECORDS

CASING RECORD

FORMATION	CONTENT	FROM	TO	SIZE	PUT IN	PULLED OUT
L/KC	Oil	3300	3557	10-3/4	647	none
Arbuckle		3657		6"	3657	1982'

Describe in detail the manner in which the well was plugged, indicating where the mud fluid was placed and the method or methods used in introducing it into the hole. If cement or other plugs were used, state the character of same and depth placed, from _____ feet to _____ feet for each plug set.

Checked hole to 3662', ran sand to 3650' and ran 5 sacks of cement.
Shot pipe at 2094', 1970', pulled 65 joints. Set 10' rock bridge at 250' and ran 6 yards concrete.

PLUGGING COMPLETE.

4-12-72
RECEIVED
STATE CORPORATION COMMISSION
APR 14 1972
CONSERVATION DIVISION
Wichita, Kansas

(If additional description is necessary, use BACK of this sheet)
Name of Plugging Contractor KNIGHT CASING PULLING CO., INC.
Address CHASE, KANSAS

STATE OF KANSAS, COUNTY OF RICE, ss.
NOEL J. KNIGHT (employee of owner) or (owner or operator) of the above-described well, being first duly sworn on oath, says: That I have knowledge of the facts, statements, and matters herein contained and the log of the above-described well as filed and that the same are true and correct. So help me God.

(Signature) Noel Knight
CHASE, KANSAS
(Address)

SUBSCRIBED AND SWORN to before me this 7th day of April, 1972

My commission expires

MARGARET MELCHER
NOTARY PUBLIC
Rice County, Kansas
My Commission Expires
Feb. 15, 1975



Margaret Melcher
Notary Public.

RECEIVED
STATE CORPORATION COMMISSION
DEC 9 1971
CONSERVATION DIVISION
Wichita, Kansas

LANE RADIOACTIVITY LOG WELLS

COMPANY

FILE NO.

Location of Well NW SE SW 10-22S-12W	COMPANY: STANOLIND OIL & GAS CO. WELL: DENKER NO. 6 FIELD: MAX COUNTY: STAFFORD STATE: KANSAS LOCATION: NW SE SW SEC. 10-22S-12W	COMPANY: STANOLIND OIL & GAS CO. WELL: DENKER NO. 6 FIELD: MAX COUNTY: STAFFORD STATE: KANSAS LOCATION: NW SE SW SEC. 10-22S-12W
--	---	---

LOG MEAS. FROM ROTARY DRIVE BUSHING	ELEV. 1859
DRLG. MEAS. FROM ROTARY DRIVE BUSHING	ELEV. 1859
PERM. DATUM TOP OF CASING SLIPS	ELEV. 1850.75

TYPE OF LOG	GAMMA-RAY	NEUTRON	
RUN NO.	7	7	
DATE	7-7-50	7-7-50	
TOTAL DEPTH (DRILLER)	3662	3662	
EFFECTIVE DEPTH (DRILLER)	3662	3662	
TOP OF LOGGED INTERVAL	ZERO	ZERO	
BOTTOM OF LOGGED INTERVAL	3661	3661	
TYPE OF FLUID IN HOLE	OIL&WTR.	OIL&WTR.	
FLUID LEVEL		3221	
MAXIMUM RECORDED TEMP.		600N	
NEUTRON SOURCE STRENGTH & TYPE		8.25	
SOURCE SPACING — IN.		9	
LENGTH OF MEASURING DEVICE — IN.	36	3 5/8	
O.D. OF INSTRUMENT — IN.	3 5/8	3 5/8	
TIME CONSTANT — SECONDS	H	E	
LOGGING SPEED FT. MIN.	25/30	25/30	
STATISTICAL VARIATION — IN.			
SENSITIVITY REFERENCE	274	275	
RECORDED BY	ELLIS	ELLIS	
WITNESSED BY	SCHROEDER	SCHROEDER	

RECEIVED
STATE CORPORATION COMMISSION
DEC 9 1971
CONSERVATION DIVISION
Wichita, Kansas

CASING RECORD (CUSTOMER)				OPEN (BORE) HOLE RECORD	
RUN NO.	SIZE—IN.	WT.—LB.	INTERVAL	BIT SIZE—IN.	INTERVAL
	10 3/4	23	ZERO TO 647		TO
	6	20	ZERO TO 3657		TO
			TO		TO
			TO		TO

REMARKS OR OTHER DATA

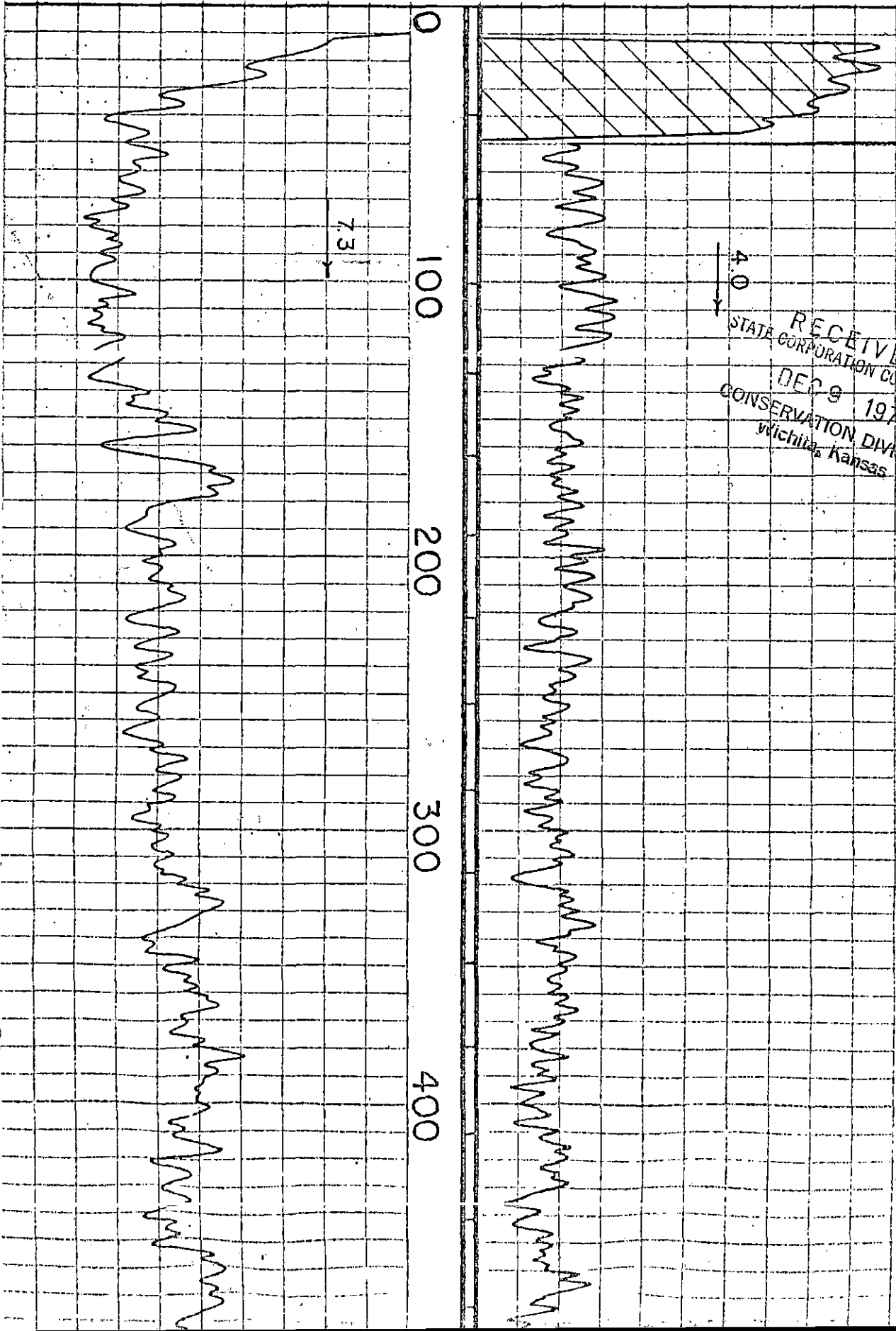
GAMMA RAY

NEUTRON

RADIATION INTENSITY INCREASES

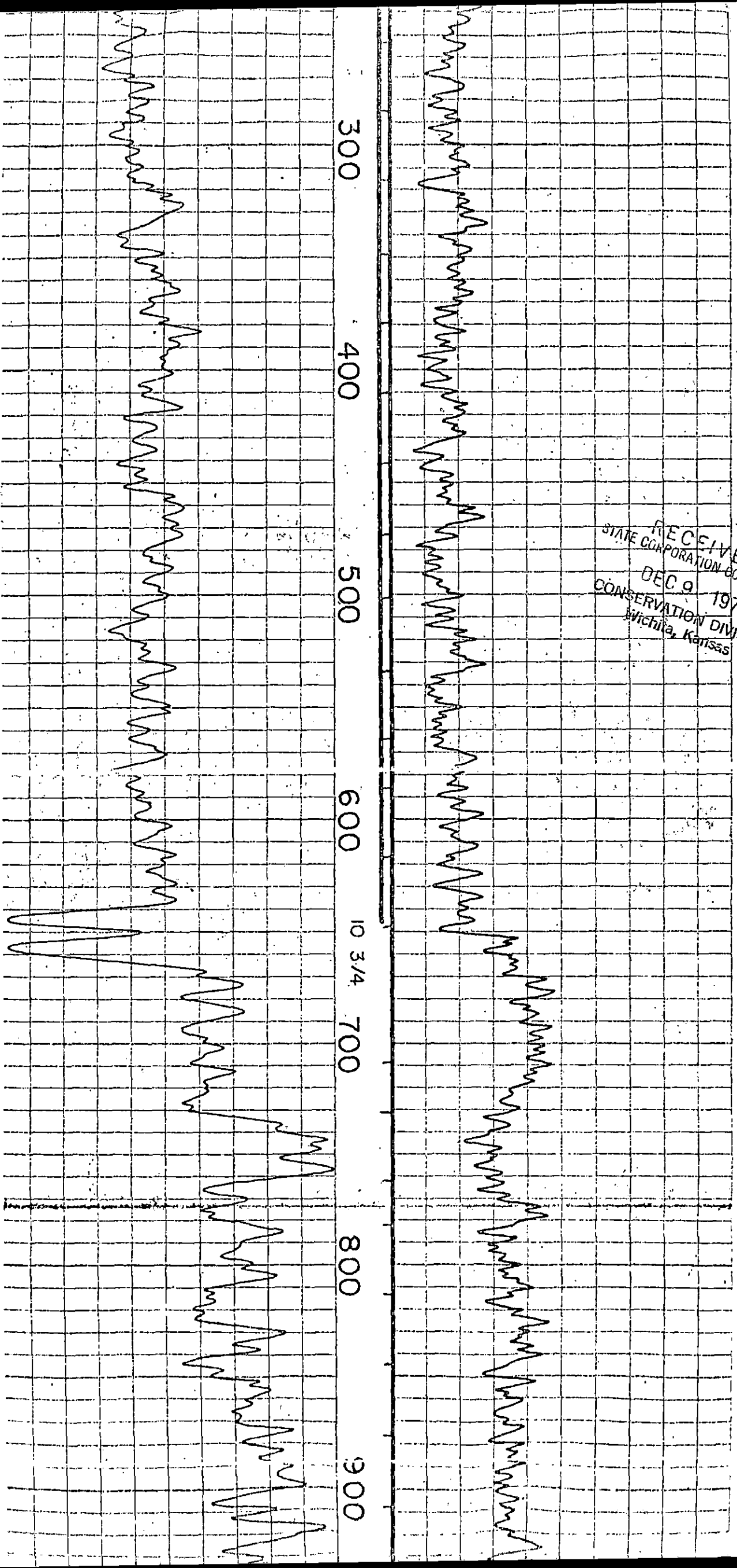
RADIATION INTENSITY INCREASES

CASING &
COLLAR LOG
DEPTH

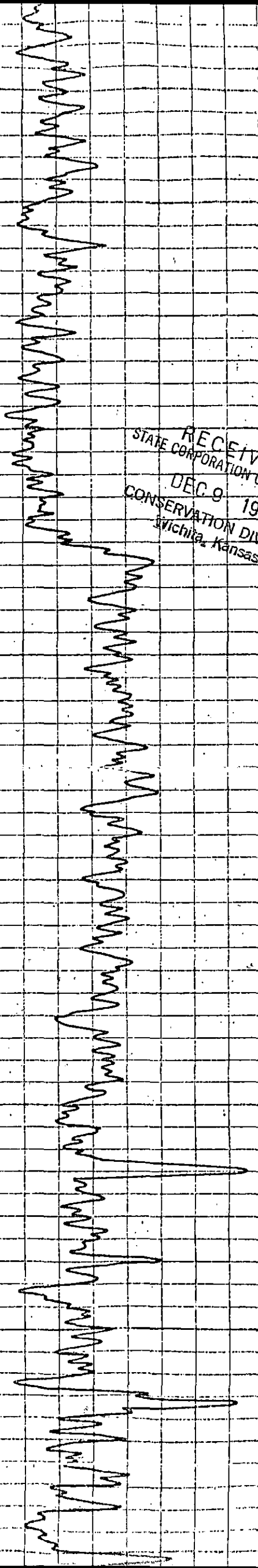


RECEIVED
STATE CORPORATION COMMISSION
DEC 9 1971
CONSERVATION DIVISION
Wichita, Kansas

RECEIVED
STATE CORPORATION COMMISSION
DEC 9 1971
CONSERVATION DIVISION
Wichita, Kansas



RECEIVED
STATE CORPORATION COMMISSION
DEC 9 1971
CONSERVATION DIVISION
Wichita, Kansas



1000

1100

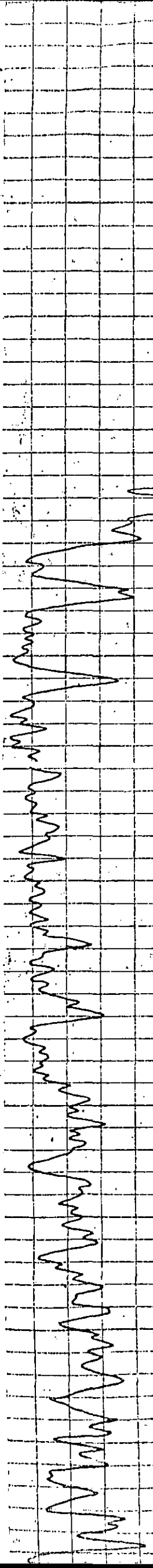
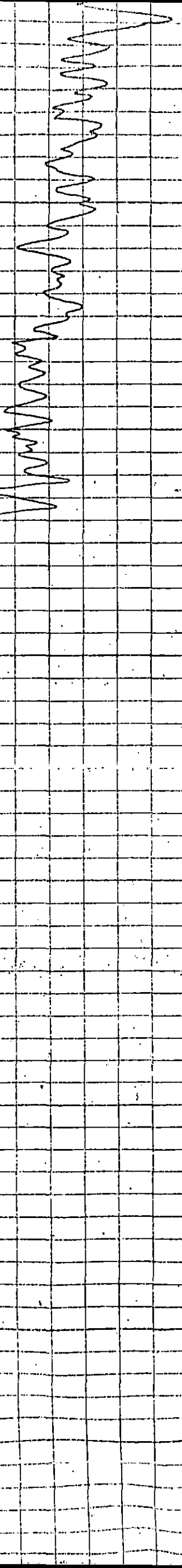
1200

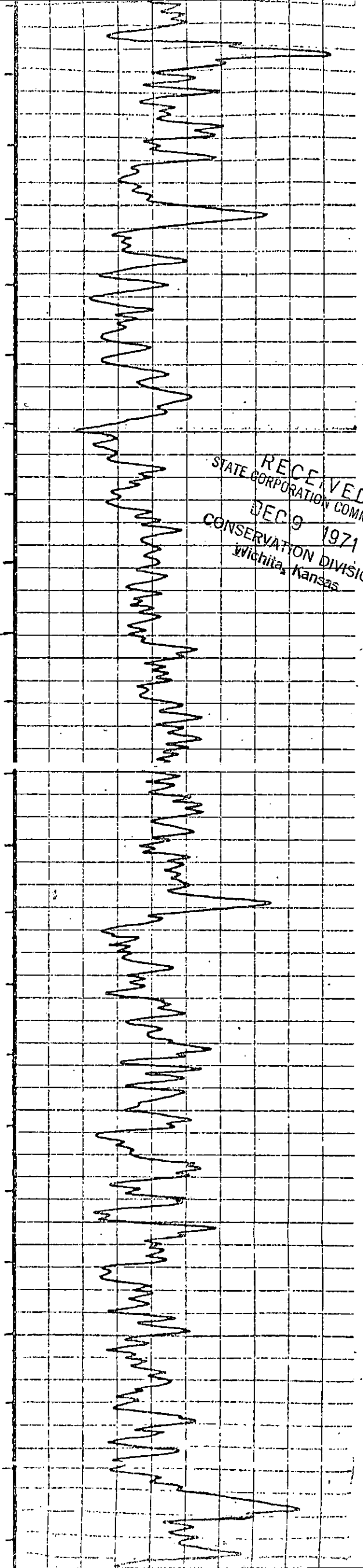
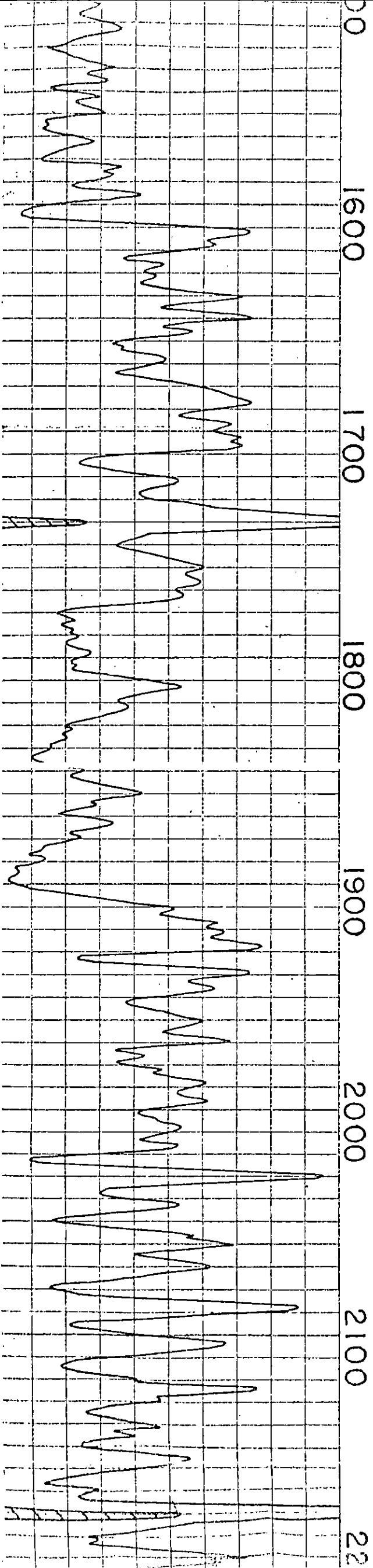
1300

1400

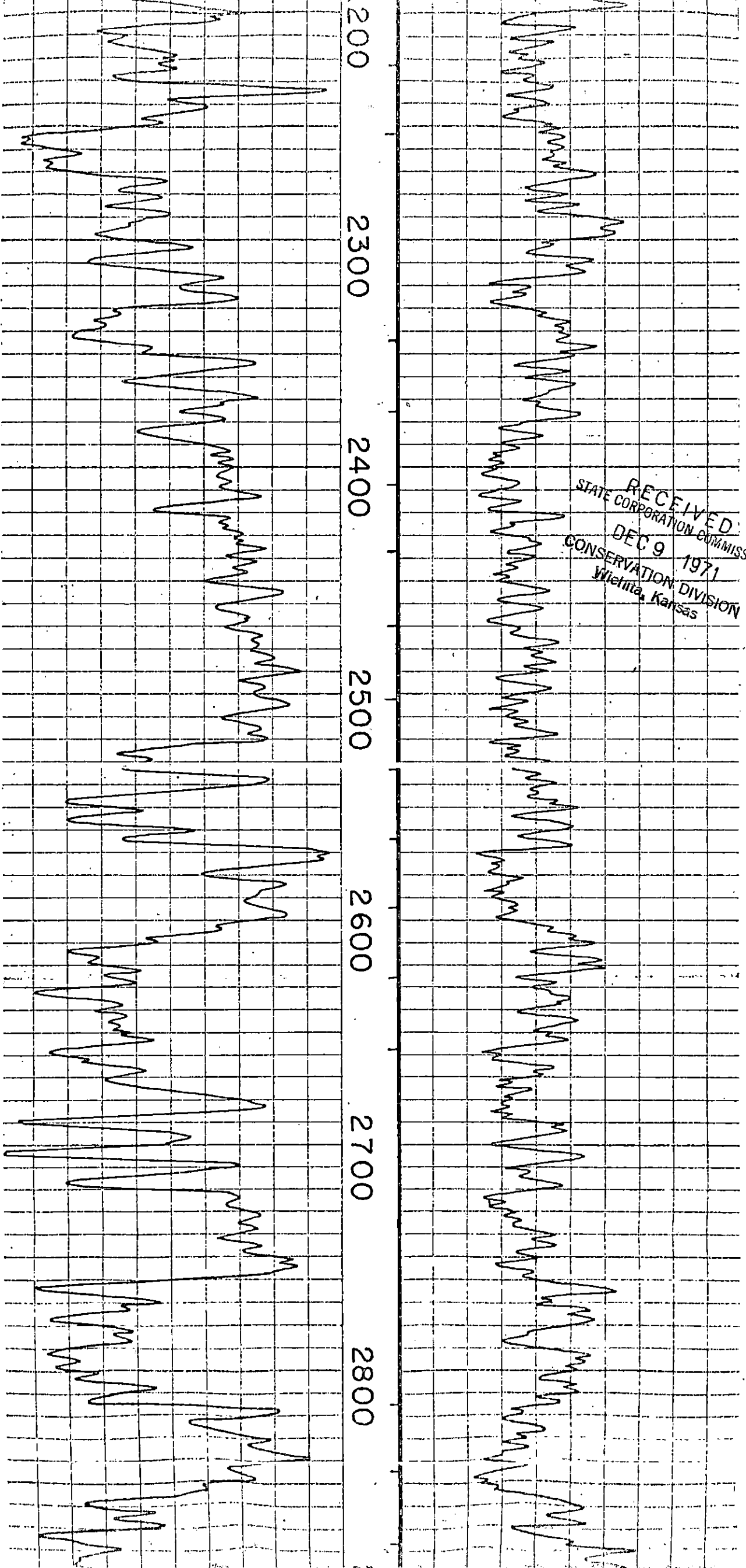
1500

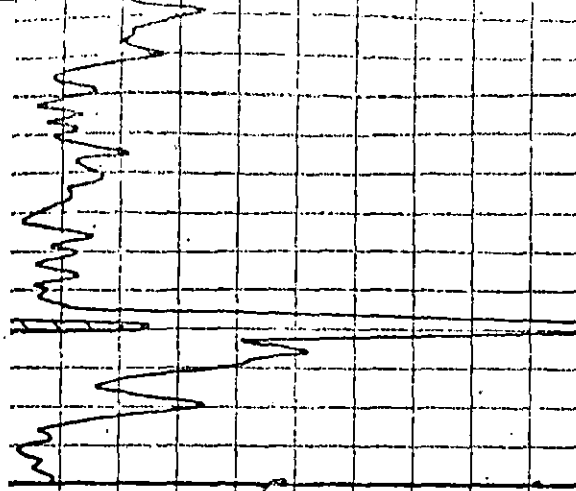
16



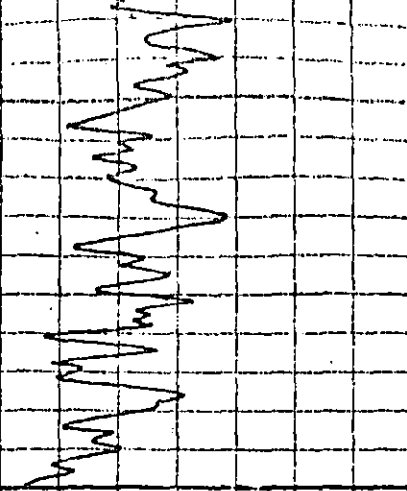


RECEIVED
STATE CORPORATION COMMISSION
DEC 9 1971
CONSERVATION DIVISION
Wichita, Kansas





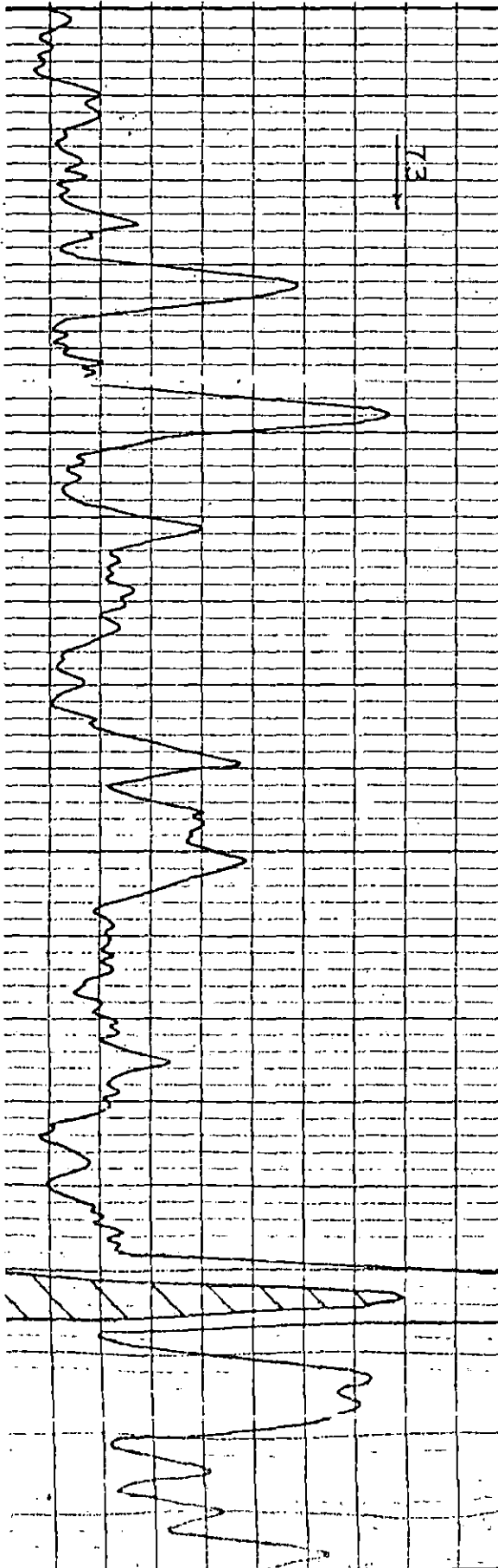
2900
3000



DETAIL SECTION BELOW

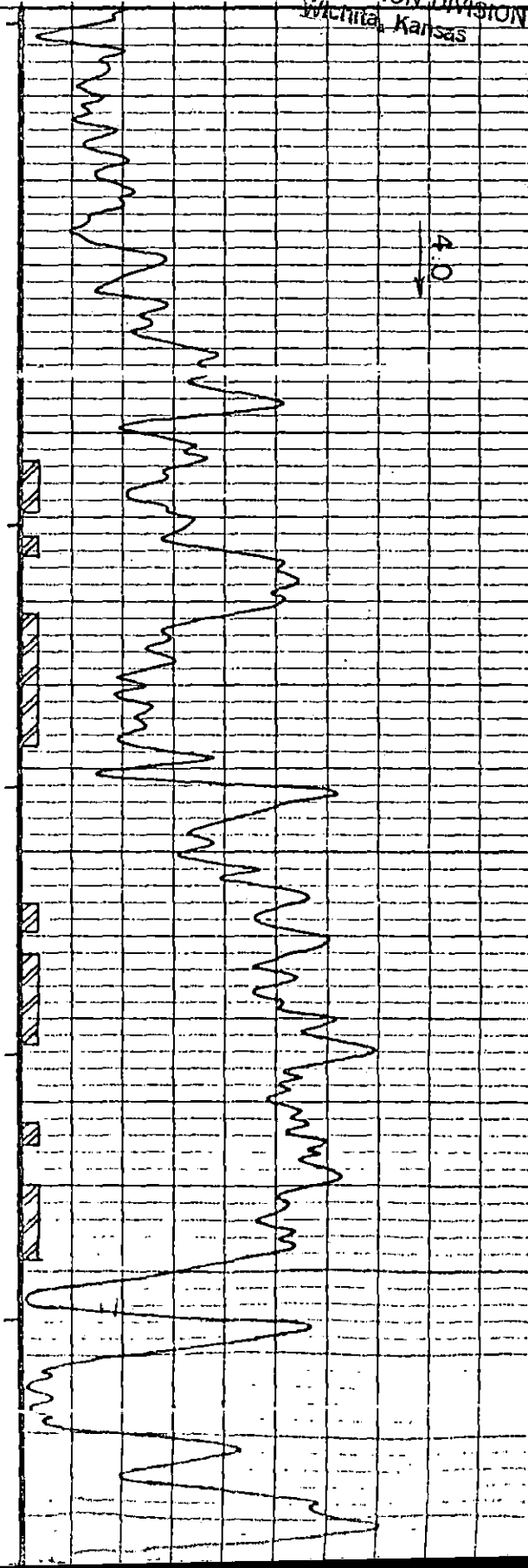
5" PER 100"

RECEIVED
STATE CORPORATION COMMISSION
DEC 9 1971
CONSERVATION DIVISION
Wichita, Kansas

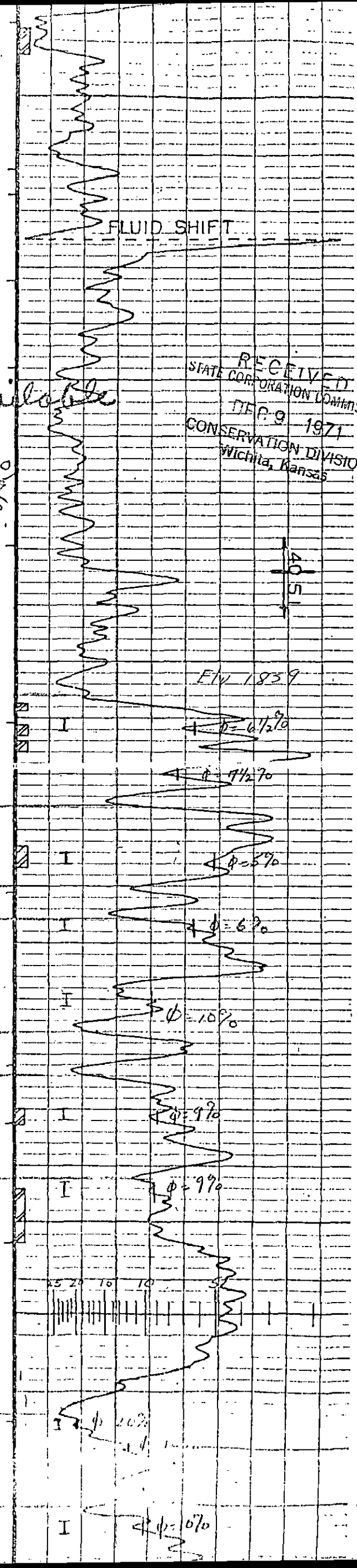
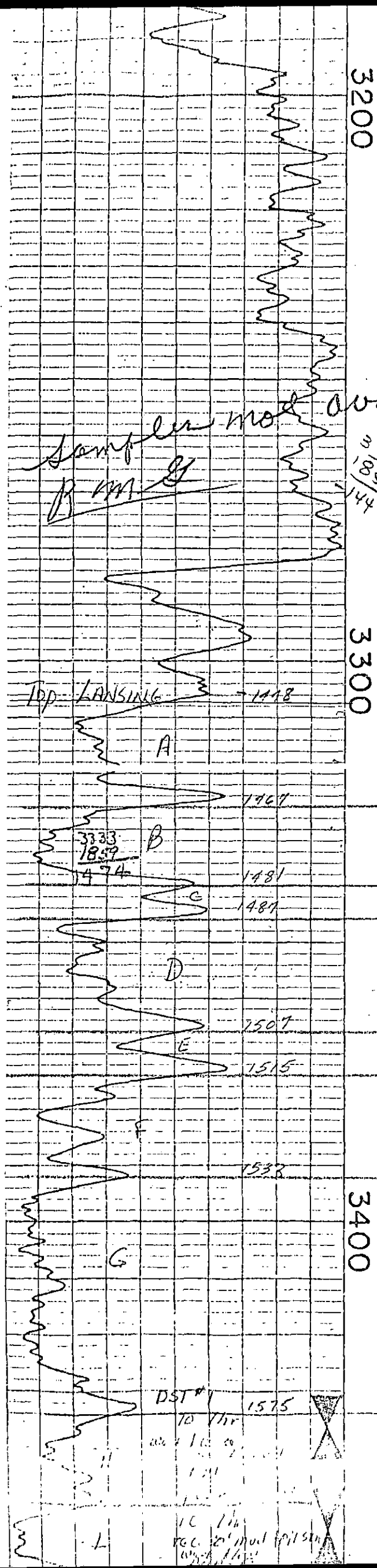


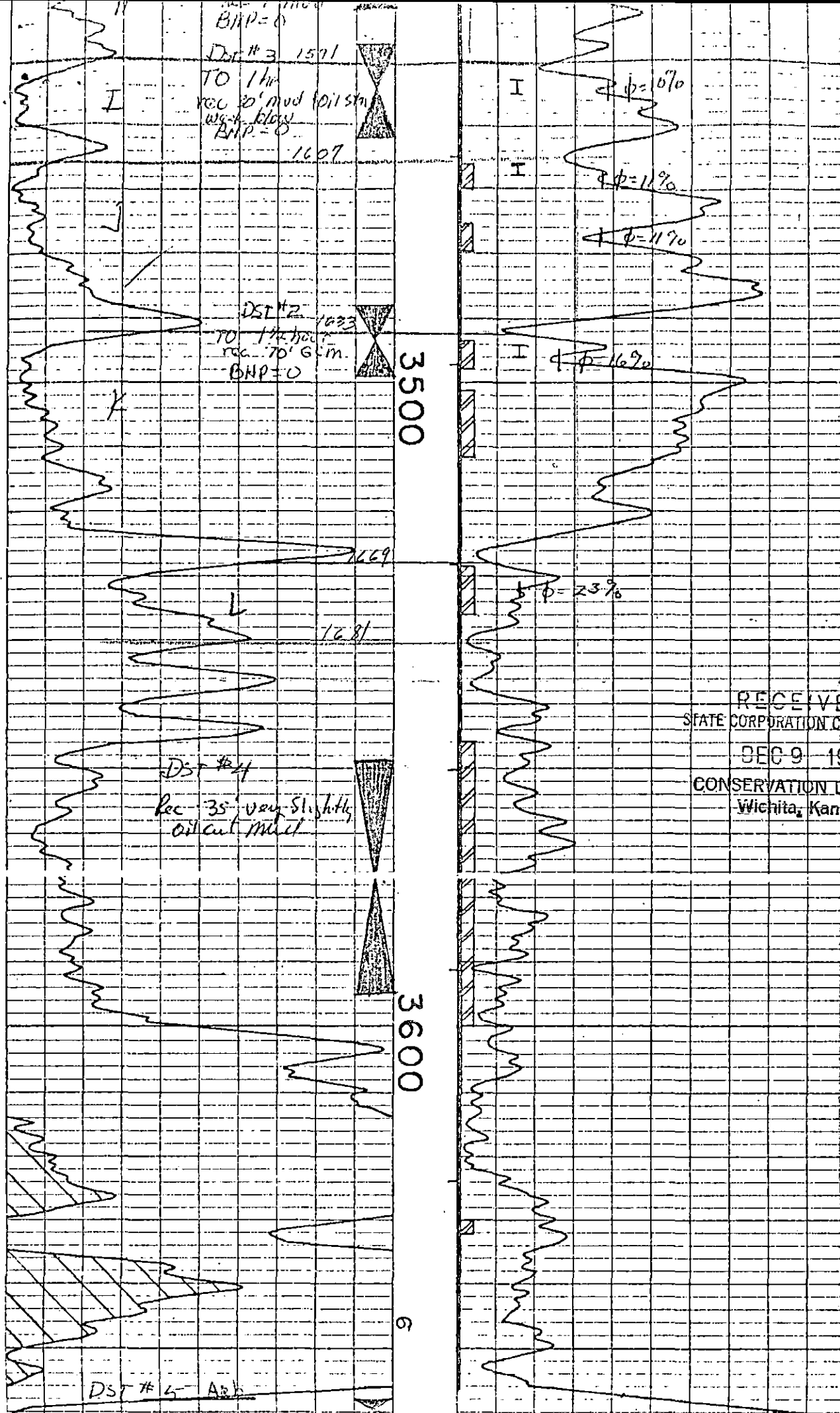
3000
3100

7.3



4.0





RECEIVED
STATE CORPORATION COMMISSION
DEC 9 1971
CONSERVATION DIVISION
Wichita, Kansas

DST # 5 - A
TO 2 1/2 min
GTS. 16 min
rec. 20' Frac Oil
30' HO ENI

RECORDED DEPTH 3661'
TOTAL DEPTH 3663'

STANOLIND OIL & GAS CO.
DENKER NO. 6
SEC. 10-22S-12W
ELEV. 859'