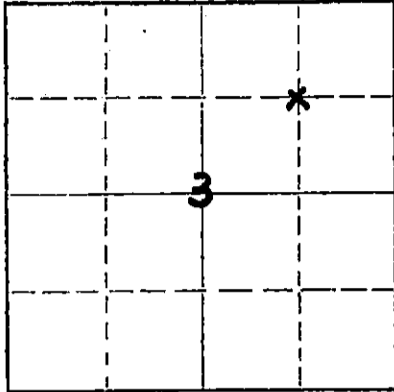


STATE OF KANSAS  
STATE CORPORATION COMMISSION

Form CP-4

Give All Information Completely  
Make Required Affidavit  
Mail or Deliver Report to:  
Conservation Division  
State Corporation Commission  
P. O. Box 17027  
Wichita, Kansas 67217  
NORTH

WELL PLUGGING RECORD



Locate well correctly on above  
Section Plat

Stafford County. Sec. 3 Twp. 22 Rge. 12 (E) (W)  
Location as "NE/CNW/SW" or footage from lines G NE/4  
Lease Owner Clinton Oil Company  
Lease Name Seifkes A#5 Well No. \_\_\_\_\_  
Office Address Great Bend, Kansas 67530  
Character of Well (completed as Oil, Gas or Dry Hole) Oil  
Date well completed 9-23-39 19\_\_  
Application for plugging filed 2-9-72 19\_\_  
Application for plugging approved 2-11-72 19\_\_  
Plugging commenced 3/25/72 19\_\_  
Plugging completed 3/28/72 19\_\_  
Reason for abandonment of well or producing formation depleted.

If a producing well is abandoned, date of last production 6-71 19\_\_  
Was permission obtained from the Conservation Division or its agents before plugging was commenced? yes

Name of Conservation Agent who supervised plugging of this well Biberstein  
Producing formation Arbuckle Depth to top 3588 Bottom 3592 Total Depth of Well 3598 Feet  
Show depth and thickness of all water, oil and gas formations. (Perfs)

OIL, GAS OR WATER RECORDS

CASING RECORD

FORMATION	CONTENT	FROM	TO	SIZE	PUT IN	PULLED OUT
Arbuckle	oil	3584	TD	8-5/8	260	none
L/KC	oil	3270	3480	5 1/2"	3538'	2479'

Describe in detail the manner in which the well was plugged, indicating where the mud fluid was placed and the method or methods used in introducing it into the hole. If cement or other plugs were used, state the character of same and depth placed, from \_\_\_\_\_ feet to \_\_\_\_\_ feet for each plug set.

Ran sand to 3575' and ran 5 sacks of cement. Shot pipe at 2594', 2476', pulled 80 joints. Bailed hole to 250', ran 4 yards concrete.

PLUGGING COMPLETE.

RECEIVED  
STATE CORPORATION COMMISSION  
APR 5 1972  
CONSERVATION DIVISION  
Wichita, Kansas

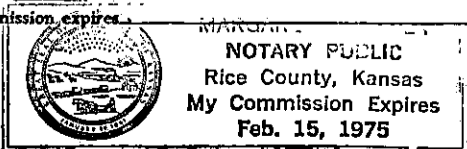
(If additional description is necessary, use BACK of this sheet)  
Name of Plugging Contractor KNIGHT CASING PULLING CO., INC.  
Address CHASE, KANSAS

STATE OF KANSAS, COUNTY OF RICE, ss.  
NOEL J. KNIGHT (employee of owner) or (owner or operator) of the above-described well, being first duly sworn on oath, says: That I have knowledge of the facts, statements, and matters herein contained and the log of the above-described well as filed and that the same are true and correct. So help me God.

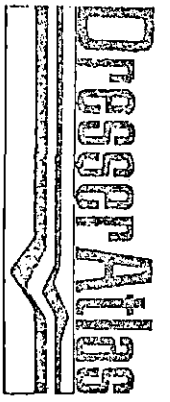
(Signature) [Signature]  
CHASE, KANSAS  
(Address)

SUBSCRIBED AND SWORN TO before me this 29th day of March, 19 72

My commission expires \_\_\_\_\_



[Signature]  
Notary Public.



*Gamma Ray Neutron*

FILE NO.

COMPANY CLINTON OIL COMPANY

WELL E. SIEFKES "A" NO. 5

FIELD MAX

COUNTY STAFFORD STATE KANSAS

LOCATION:

C - NE

SEC 3 TWP 22S RGE 12W

Other Services

Permanent Datum CEMENT FLOOR

Elev. 1840

Log Measured from 3' A.C.F. Ft. Above Permanent Datum

Drilling Measured from D.F.

Elevations:  
KB N/A  
DF 1843  
GL 1840

Date 12-29-71

Run No. ONE (OW)

Type Log G/R-N/N

Depth-Driller -

Depth-Logger 3599

Bottom Logged Interval 3598

Top Logged Interval 2050

Type Fluid in Hole OIL & WATER

Solinity Ppm Cl. -

Density Lb./Gal. -

Level 860

Max. Rec. Temp. Deg. F -

Op. Rig Time 2 HRS.

Recorded By J. NOLTE

Witnessed By MR. PETTYJOHN

Bore Hole Record

Casing Record

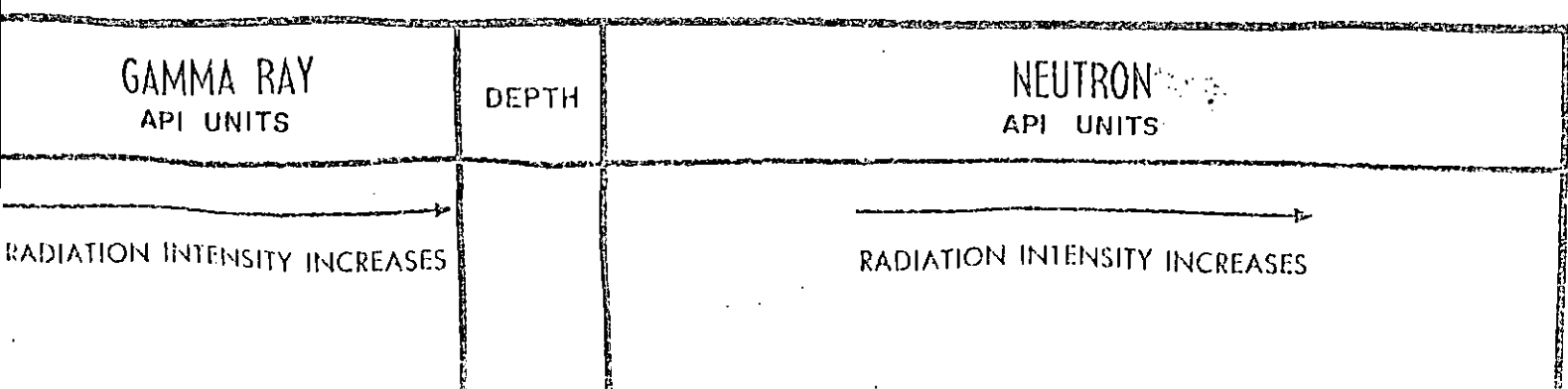
Run No.	Bit	From	To	Size	Wgt.	From	To
-	-	-	-	8-5/8	32	SURE	260
-	-	-	-	5-1/2	14	SURE	3588 ?

Gamma Ray			Equipment Data			Neutron		
Run No.	ONE		Run No.	ONE				
Tool Model No.	2403		Log. Type	N/EN				
Diam.	3-1/2"		Tool Model No.	2403				
Defect. Model No.	D6G4		Diam.	3-1/2"				
Type	SCINT.		Defect. Model No.	D6N3				
Length	4"		Type	SCINT.				
Dist. to N. Source	7'		Length	4"				
			Source Model No.	S17R5				
			Serial No.	27934				
			Spacing	14.2"				
			Type	AM BE				
			Strength	4.5 CURIES				

RECEIVED  
STATE CORPORATION COMMISSION  
FEB 10 1972  
Conservation Division  
Tulsa, Kansas

Logging Data											
General				Gamma Ray				Neutron			
Run No.	Depths		Speed Ft./Min.	T.C. Sec.	Sens. Settings	Zero Div. L or R	API G.R. Units Per Log Div.	T.C. Sec.	Sens. Settings	Zero Div. L or R	API N. Units Per Log Div.
	From	To									
1	3598	2050	25	1.5	933X1	2L	8	1.5	800X1	3L	100

Remarks: \_\_\_\_\_ Reference Literature: \_\_\_\_\_

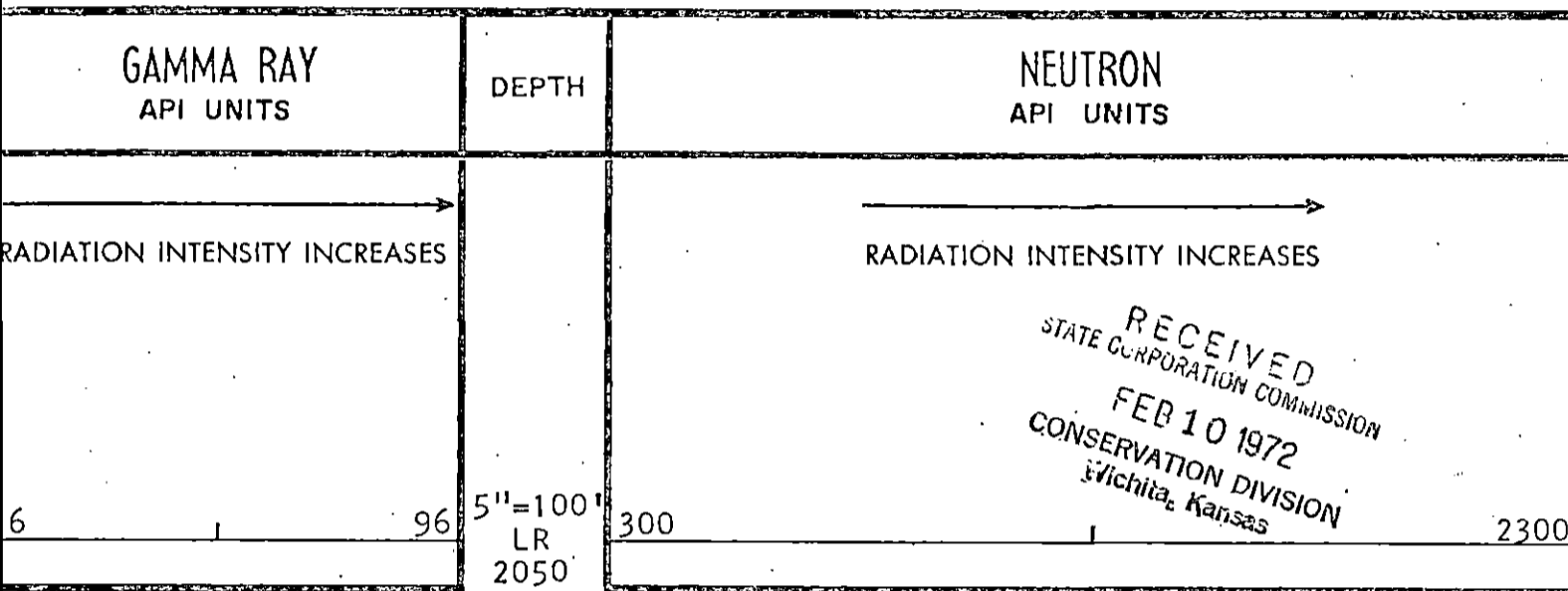


Hoist Truck No.	LC-1082	Source Model No.	S17R5
Inst. Truck No.		Serial No.	27934
Tool Serial No.		Spacing	14.2"
		Type	AM BE
		Strength	4.5 CURTIS

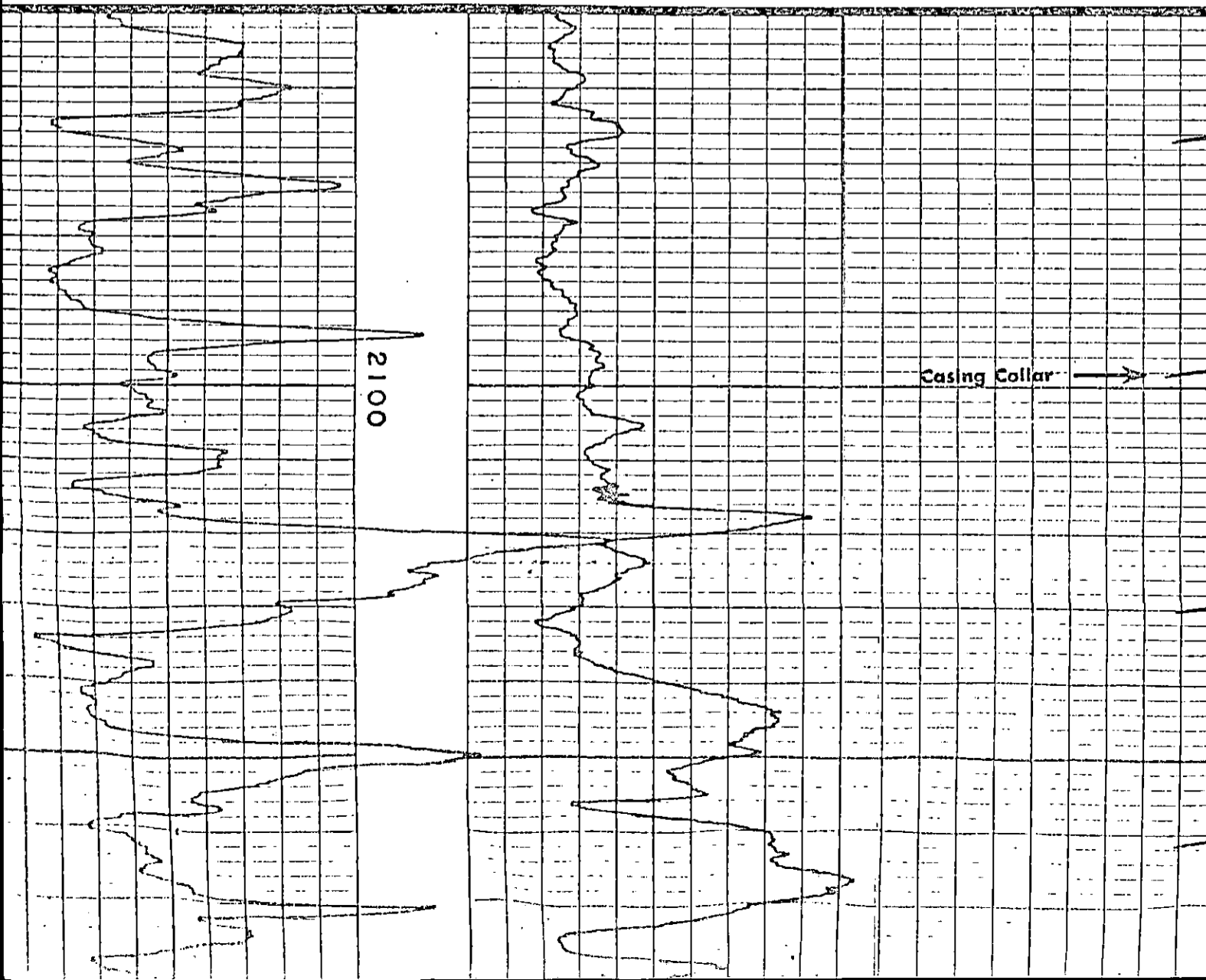
Logging Data											
General			Gamma Ray				Neutron				
Run No.	Depths		Speed	T.C.	Sens.	Zero	API G.R. Units	T.C.	Sens.	Zero	API N. Units
	From	To	Ft./Min.	Sec.	Settings	Div. L or R	Per Log Div.	Sec.	Settings	Div. L or R	Per Log Div.
1	3598	2050	25	1.5	933X1	2L	8	1.5	800X1	3L	100

Remarks: \_\_\_\_\_

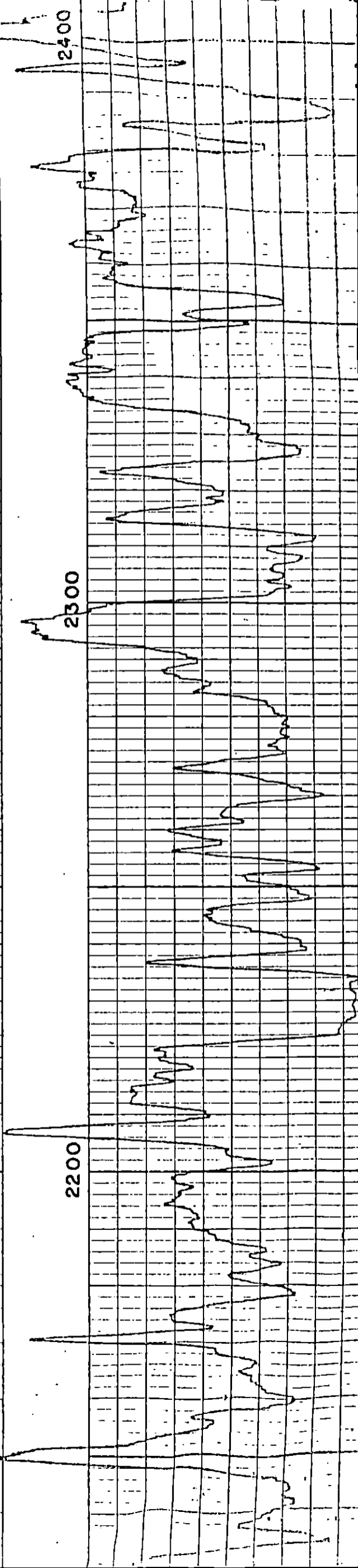
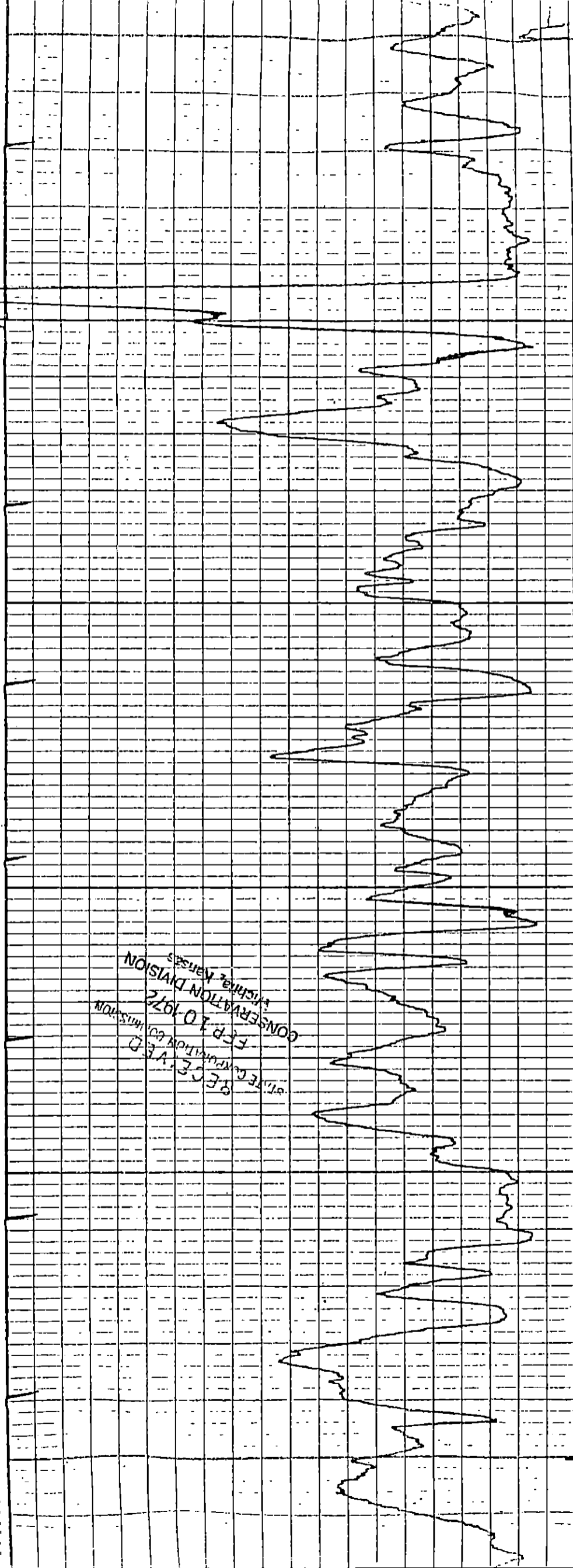
Reference Literature: \_\_\_\_\_



RECEIVED  
STATE CORPORATION COMMISSION  
FEB 10 1972  
CONSERVATION DIVISION  
Wichita, Kansas



STATE OF KANSAS  
BCE, A.E.D.  
F.P. 10-1972  
CONSERVATION DIVISION  
Wichita, Kansas



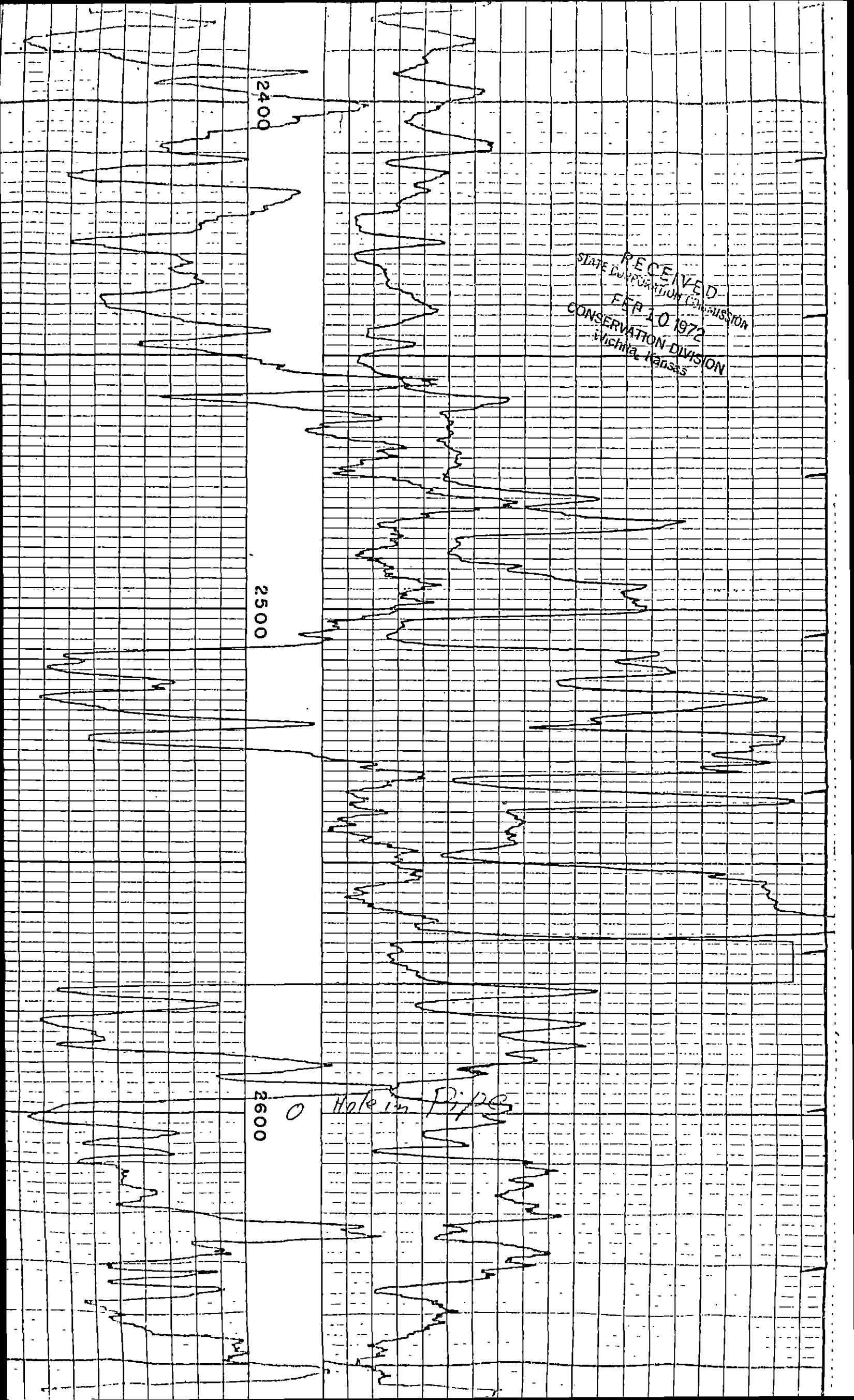
RECEIVED  
STATE CORPORATION COMMISSION  
FEB 10 1972  
CONSERVATION DIVISION  
Wichita, Kansas

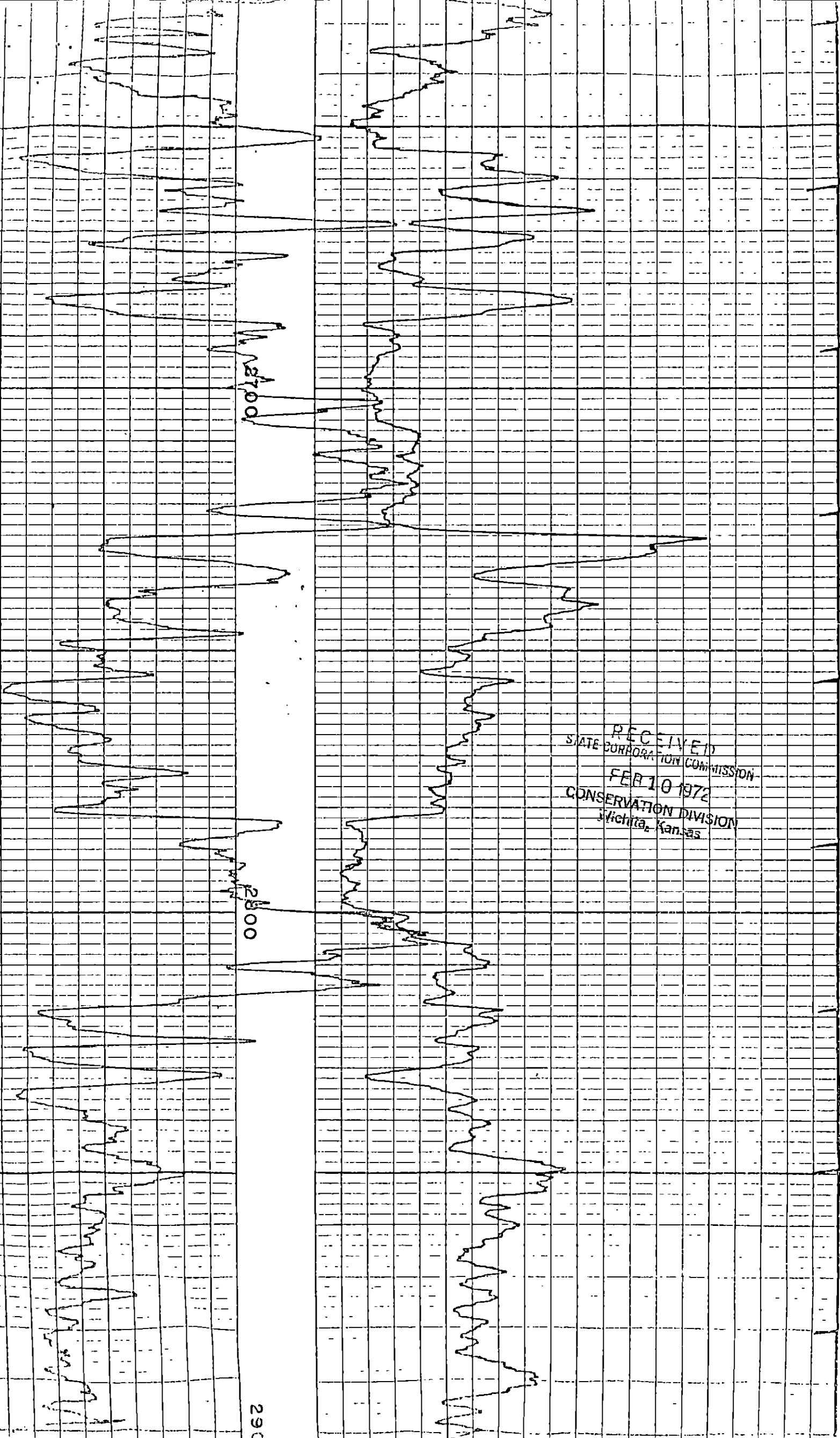
2400

2500

2600

o Hole in Pipe

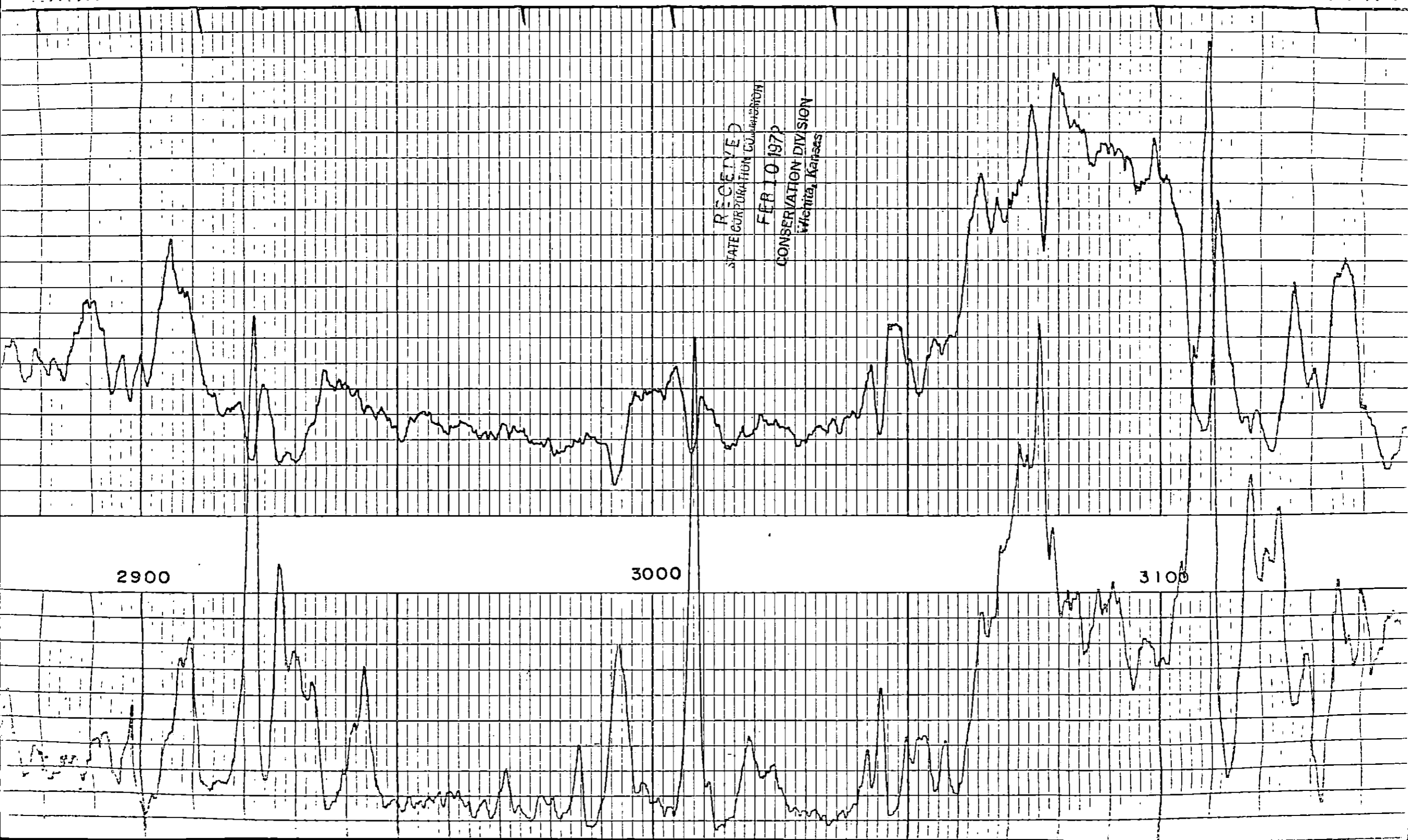


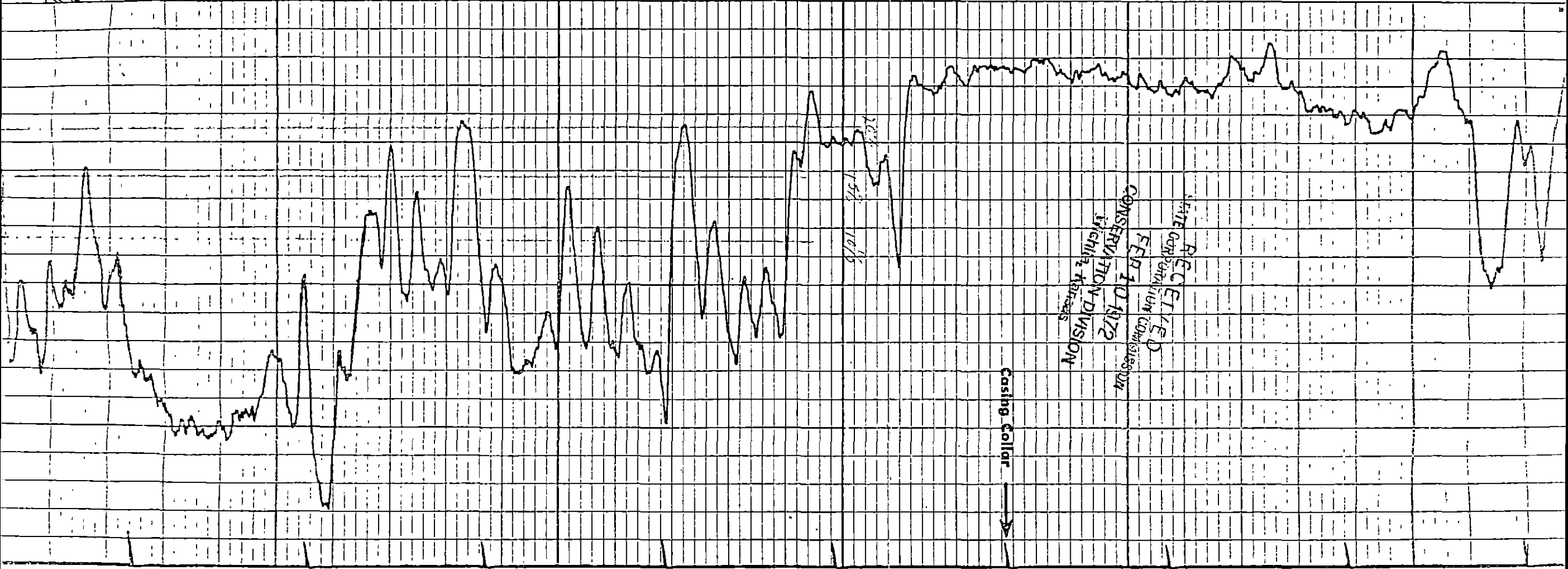
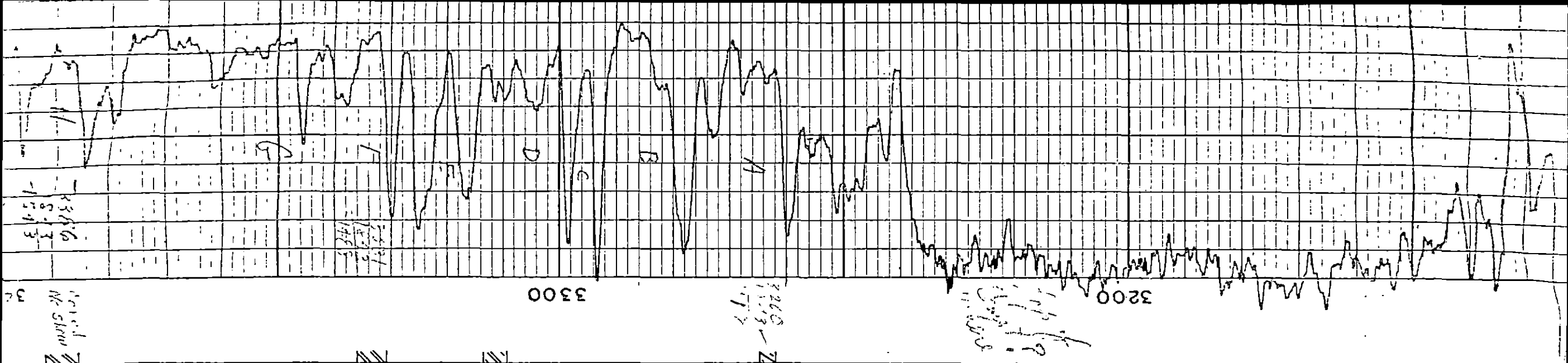


2700

2500

RECEIVED  
STATE CORPORATION COMMISSION  
FEB 10 1972  
CONSERVATION DIVISION  
Wichita, Kansas

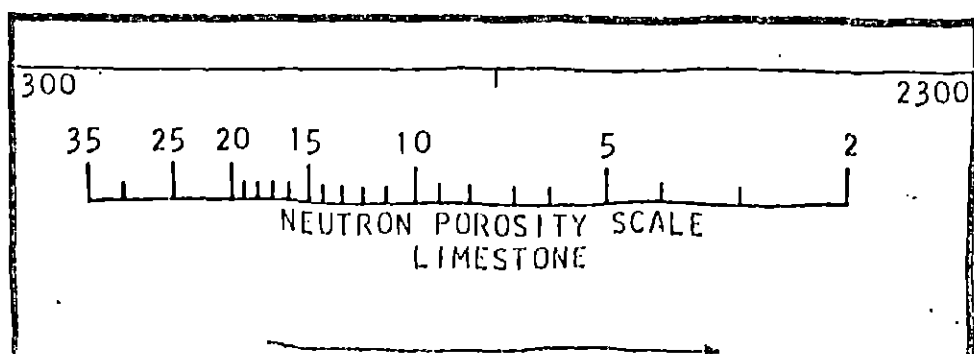
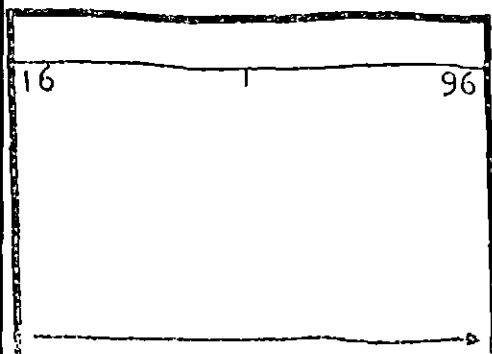
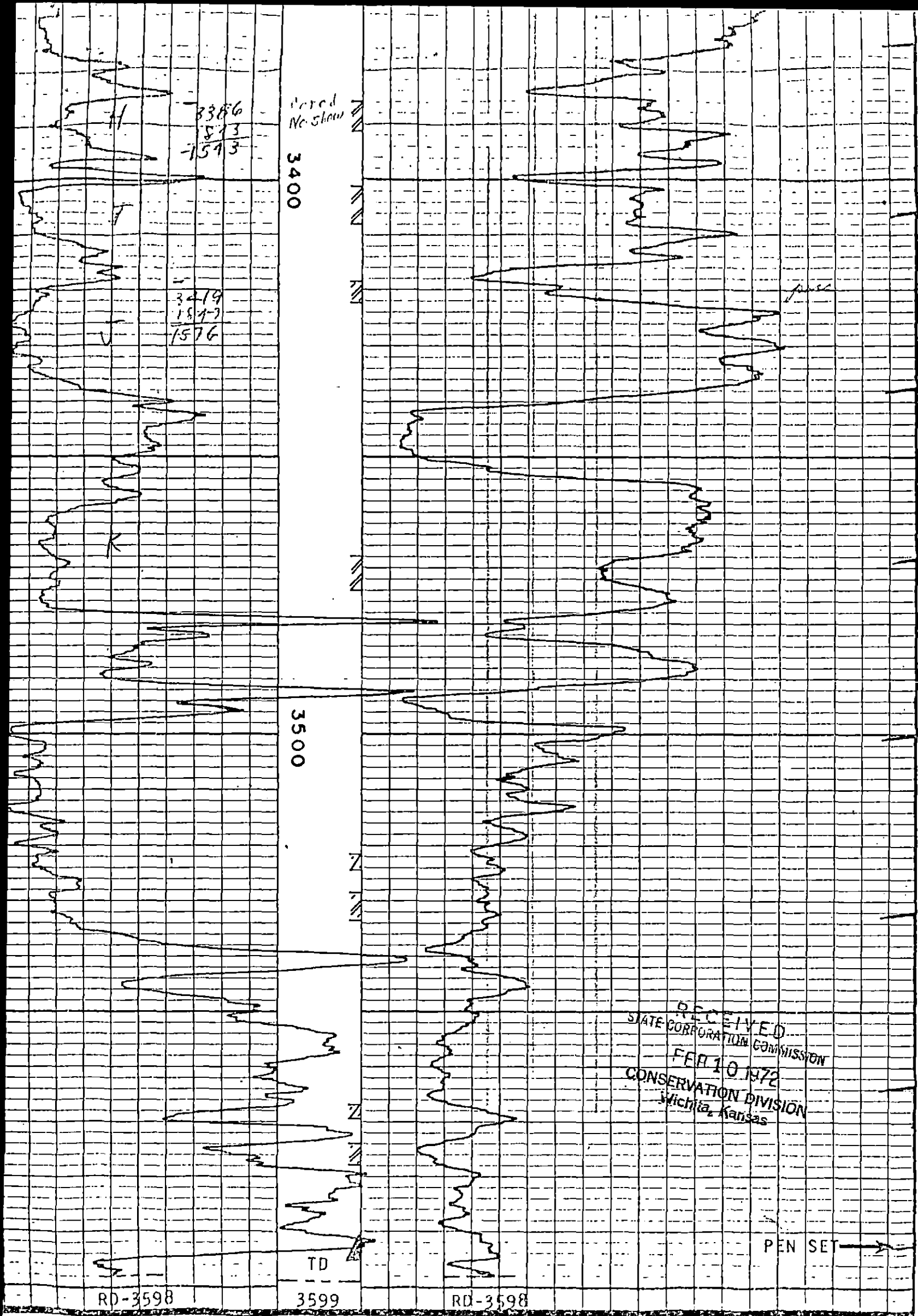


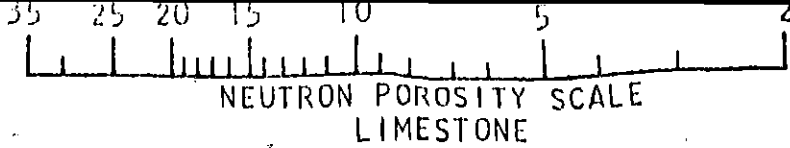


Casing collar

REC'D  
 STATE CORPORATION  
 FEB 10 1972  
 CONSERVATION DIVISION  
 Michigan, Detroit





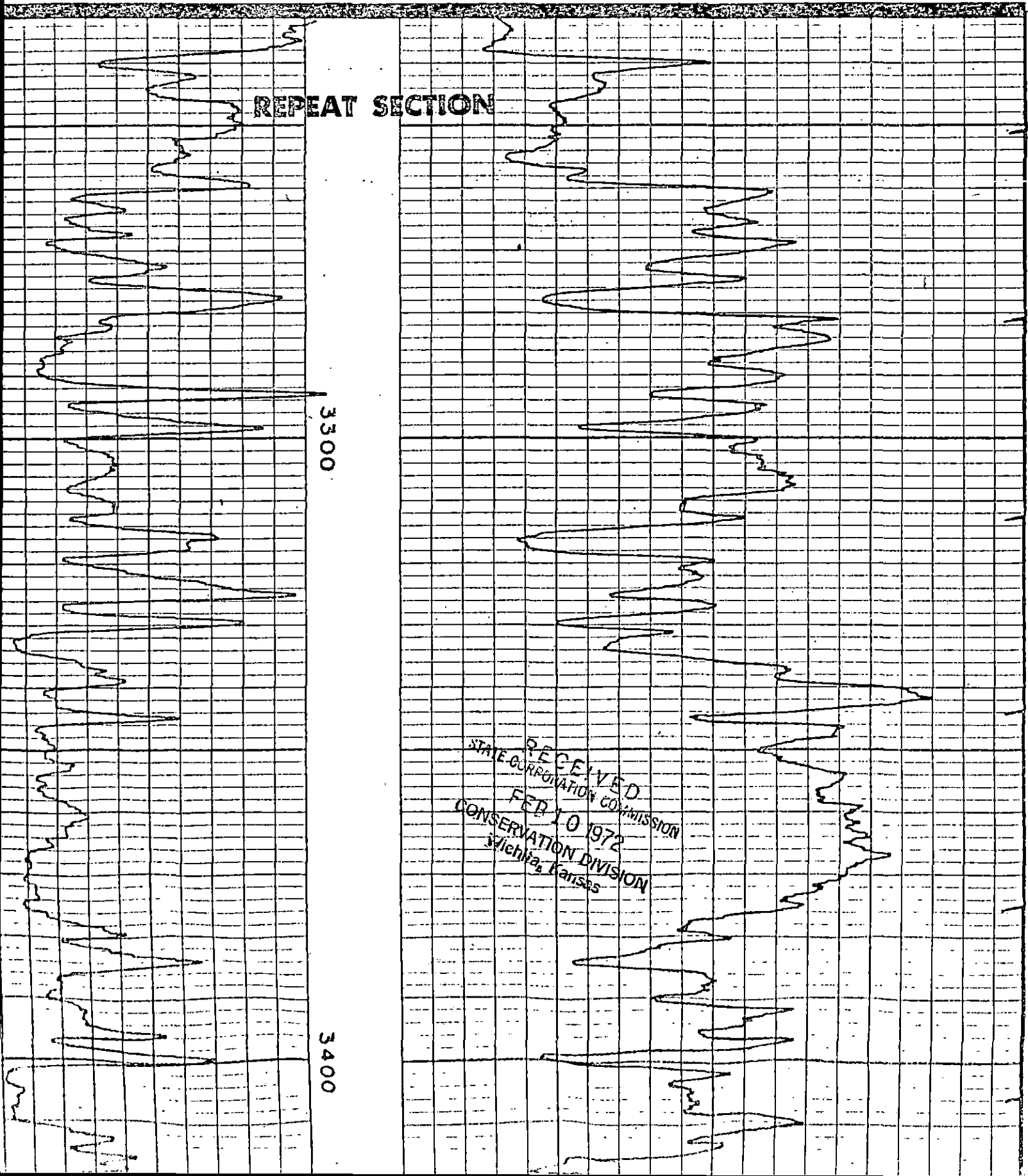


RADIATION INTENSITY INCREASES →

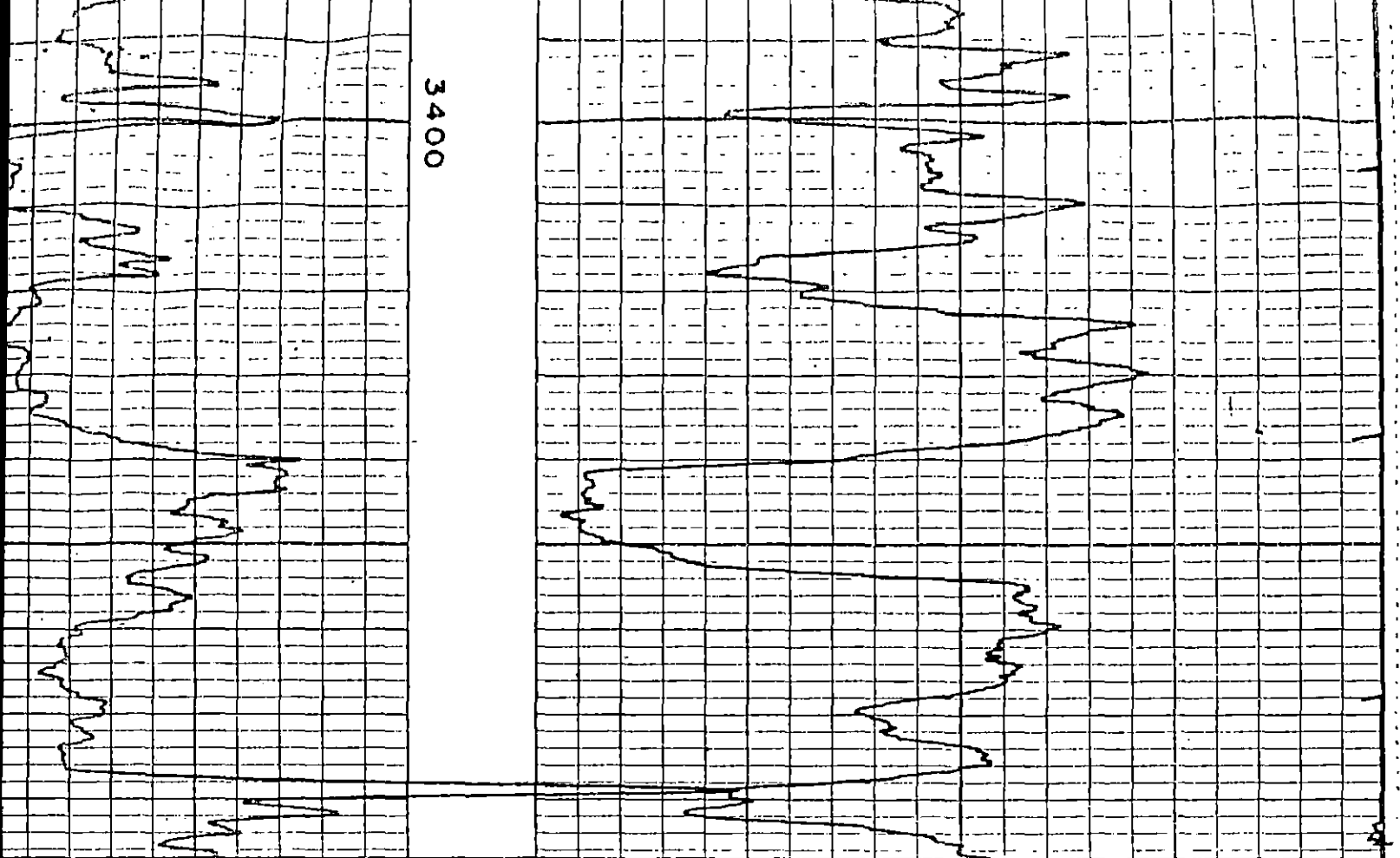
→ RADIATION INTENSITY INCREASES

GAMMA RAY API UNITS	DEPTH	NEUTRON API UNITS
------------------------	-------	----------------------

Company	CLINTON OIL COMPANY	Drillers T.D.	-
Well	E. SIEFKES "A" NO. 5	Log F.R.	3598
Field	MAX	Log T.D.	3599
County	STAFFORD	Elevations:	
State	KANSAS	K.B. N/A	D.F. 1843
			G.L. 1840



3400



### STATISTICAL CHECK

STAT @3460.5

STAT @3467

### CALIBRATION

RECEIVED  
 STATE OF KANSAS  
 FEB 10 1972  
 CONSERVATION DIVISION  
 Topeka, Kansas

G/R LOG CALIBRATION AFTER LOG	
API UNITS OF CALIB. STD.	224
SENSITIVITY READING	300
MULTIPLIER	X1
ZERO SUPPRESSION	0
TIME CONSTANT	1.5
MEASURED CHART DIVISIONS	9.0

NEUTRON LOG CALIBRATION AFTER LOG	
API UNITS OF CALIB. STD.	900
SENSITIVITY READING	800
MULTIPLIER	X1
ZERO SUPPRESSION	0
TIME CONSTANT	1.5
MEASURED CHART DIVISIONS	9.0

TIME CONSTANT ..... 1.5  
MEASURED CHART DIVISIONS ... 9.0

TIME CONSTANT ..... 1.5  
MEASURED CHART DIVISIONS ... 9.0

**G/R LOG CALIBRATION  
BEFORE LOG**  
API UNITS OF CALIB. STD. .... 224  
SENSITIVITY READING ..... 300  
MULTIPLIER ..... X1  
ZERO SUPPRESSION ..... 0  
TIME CONSTANT ..... 1.5  
MEASURED CHART DIVISIONS ... 9.0

**NEUTRON LOG CALIBRATION  
BEFORE LOG**  
API UNITS OF CALIB. STD. .... 900  
SENSITIVITY READING ..... 800  
MULTIPLIER ..... X1  
ZERO SUPPRESSION ..... 0  
TIME CONSTANT ..... 1.5  
MEASURED CHART DIVISIONS ... 9.0



RECEIVED  
CONSERVATION COMMISSION  
FEB 10 1972  
CONSERVATION DIVISION  
Wichita, Kansas