

STATE OF KANSAS
STATE CORPORATION COMMISSION

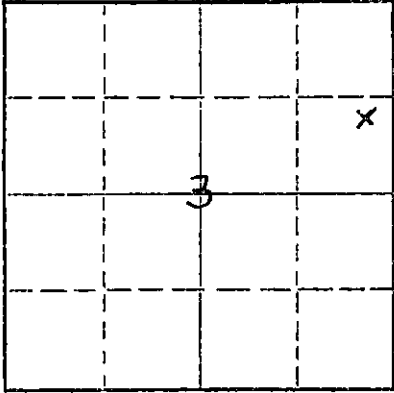
Form CP-4

Give All Information Completely
Make Required Affidavit
Mail or Deliver Report to:
Conservation Division
State Corporation Commission
P. O. Box 17027
Wichita, Kansas 67217
NORTH

WELL PLUGGING RECORD

Stafford County, Sec. 3 Twp. 22 Rge. 12 (E) (W)
NE NE

Location as "NE/CNW/SW" or footage from lines
Lease Owner: Clinton Oil Company
Lease Name: Siefkes #A2 Well No.
Office Address: Great Bend, Kansas 67530
Character of Well (completed as Oil, Gas or Dry Hole) Oil
Date well completed May, 17 19 38
Application for plugging filed December 23, 19 71
Application for plugging approved January 5, 19 72
Plugging commenced 3/24/72 19
Plugging completed 3/31/72 19
Reason for abandonment of well or producing formation depleted.



Locate well correctly on above Section Plat

If a producing well is abandoned, date of last production August 19 71
Was permission obtained from the Conservation Division or its agents before plugging was commenced? yes

Name of Conservation Agent who supervised plugging of this well Biberstein
Producing formation L/KC Depth to top 3256 Bottom 3450 Total Depth of Well 3601 Feet
Show depth and thickness of all water, oil and gas formations. (Perfs)

OIL, GAS OR WATER RECORDS

CASING RECORD

FORMATION	CONTENT	FROM	TO	SIZE	PUT IN	PULLED OUT
Arbuckle	Oil	3592		10-3/4	2676'	none
L/KC	Oil	3251	3480	6"	3596	1734'

Describe in detail the manner in which the well was plugged, indicating where the mud fluid was placed and the method or methods used in introducing it into the hole. If cement or other plugs were used, state the character of same and depth placed, from feet to feet for each plug set.

3/2 Raised mast, checked hole to 3480' and pushed plug to 3250', ran sand.
Ran 5 sacks of cement. Shot pipe at 2494', 2375', 2257', 2130', 1978', 1851', 1728', pulled 58 joints. Bailed hole to 250' and ran 6 yards concrete.

PLUGGING COMPLETE.

4-10-72

RECEIVED
STATE CORPORATION COMMISSION

APR 10 1972

CONSERVATION DIVISION
Wichita, Kansas

(If additional description is necessary, use BACK of this sheet)

Name of Plugging Contractor: KNIGHT CASING PULLING CO., INC.
Address: CHASE, KANSAS

STATE OF KANSAS, COUNTY OF RICE, ss.

NOEL J. KNIGHT (employee of owner) or (owner or operator) of the above-described well, being first duly sworn on oath, says: That I have knowledge of the facts, statements, and matters herein contained and the log of the above-described well as filed and that the same are true and correct. So help me God.

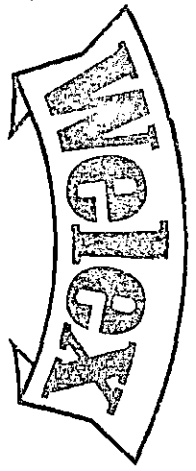
(Signature) Noel Knight
CHASE, KANSAS
(Address)

SUBSCRIBED AND SWORN to before me this 1st day of April, 19 72

Margaret Melcher
Notary Public.



RECEIVED
STATE CORPORATION COMMISSION
DEC 23 1971
CONSERVATION DIVISION
Wichita, Kansas



15-185-01972-0001

RADIOACTIVITY
LOG

RECEIVED
STATE CORPORATION COMMISSION
DEC 23 1971
CONSERVATION DIVISION
Wichita, Kansas

COMPANY PAN AMERICAN PET. CORP.
WELL SIEFKES # 2 "A"
FIELD MAX
County STAFFORD State KANS.
COMPANY PAN AMERICAN PETROLEUM CORPORATION
WELL SIEFKES # 2 "A"
FIELD MAX
COUNTY STAFFORD STATE KANSAS
Location NE-SE-NE
Sec. 3 Twp. 22S Rge. 12W
Other Serv. ess: NONE

Permanent Datum CONCRETE FLOOR Elev. 1840'
Log Measured from _____ Ft. Above Perm. Datum
Drilling Measured From _____ G.L.

Date	3-12-68	3-12-68
Run No.	ONE	ONE
Type log	GAMMA	NEUTRON
Depth-Driller	3601'	3601'
Depth-Welex	3600'	3600'
Bottom Logged Interval	3592'	3600'
Top Logged Interval	2600'	2600'
Type Fluid in Hole		OIL & WATER
Salinity, PPM Cl.		
Density		
Level		2550'
Max. rec. temp., deg. F.		
Operating Rig Time		
Recorded By	SIEFKES	
Witnessed by	MR. REIN	

BORE-HOLE RECORD		CASING RECORD	
Run No.	Bit	From	To
1		5 1/2"	3'94'
		Size	Wgt.
			From
			To

Fold Here

EQUIPMENT DATA			
GAMMA RAY		NEUTRON	
Run No.	ONE	Run No.	ONE
Tool Model No.	KANSAS	Log Type	NEUTRON-GAMMA
Diameter	3-3/8"	Tool Model No.	KANSAS
Detector Model No.	D4G1	Diameter	3-3/8"
Type	SCINTILLATION	Detector Model No.	1C-8
Length	4"	Type	GEIGER-MUELLER
Distance to N. Source	96"	Length	14"
		Source Model No.	5C
		Serial No.	N316
		Spacing	13 9"
		Type	PLUTONIUM-BERYLLIUM
		Strength	8.5 x 10 ⁶ NEUTRONS/SEC.

LOGGING DATA											
GENERAL			GAMMA RAY				NEUTRON				
Run No.	Depths		Speed	T.C.	Sens.	Zero	API G.R. Units	T.C.	Sens.	Zero	API N. Units
	From	To	Ft Min	Sec.	Settings	Div. L or R	per Log Div.	Sec.	Settings	Div. L or R	per Log Div.
1	3600'	2600' (5')	(5')*	2	100	1L	10	2	2000	6L	100

Reference Literature:

Service Ticket No. 17811 Remarks: tek

OPERATION

Services:

S.S. 1840
G.L.

3592
10

Fold Here

EQUIPMENT DATA

GAMMA RAY

NEUTRON

Run No.	ONE	Run No.	ONE
Tool Model No.	KANSAS	Log Type	NEUTRON-GAMMA
Diameter	3-3/8"	Tool Model No.	KANSAS
Detector Model No.	D4G1	Diameter	3-3/8"
Type	SCINTILLATION	Detector Model No.	1C-8
Length	4"	Type	GEIGER-MUELLER
Distance to N. Source	96"	Length	14"
		Source Model No.	5C
		Serial No.	N316
		Spacing	13.9"
		Type	PLUTONIUM-BERYLLIUM
		Strength	8.5 x 10 ⁶ NEUTRONS/SEC.

GENERAL

Hoist Truck No.	6890
Instrument Truck No.	6890
Tool Serial No.	12819

LOGGING DATA

GENERAL

GAMMA RAY

NEUTRON

Run No.	Depths		Speed Ft./Min.	T.C. Sec.	Sens. Settings	Zero Div. L or R	API G.R. Units per Log Div.	T.C. Sec.	Sens. Settings	Zero Div. L or R	API N. Units per Log Div.
	From	To									
1	3600'	2600' (5')*		2	100	1L	10	2	2000	6L	100

* SEE TIME MARKERS

Reference Literature:

Service Ticket No. 17811 Remarks:

RECEIVED
STATE CORPORATION COMMISSION
DEC 23 1971
CONSERVATION DIVISION
Wichita, Kansas

iek

Fold Here

5" = 100'

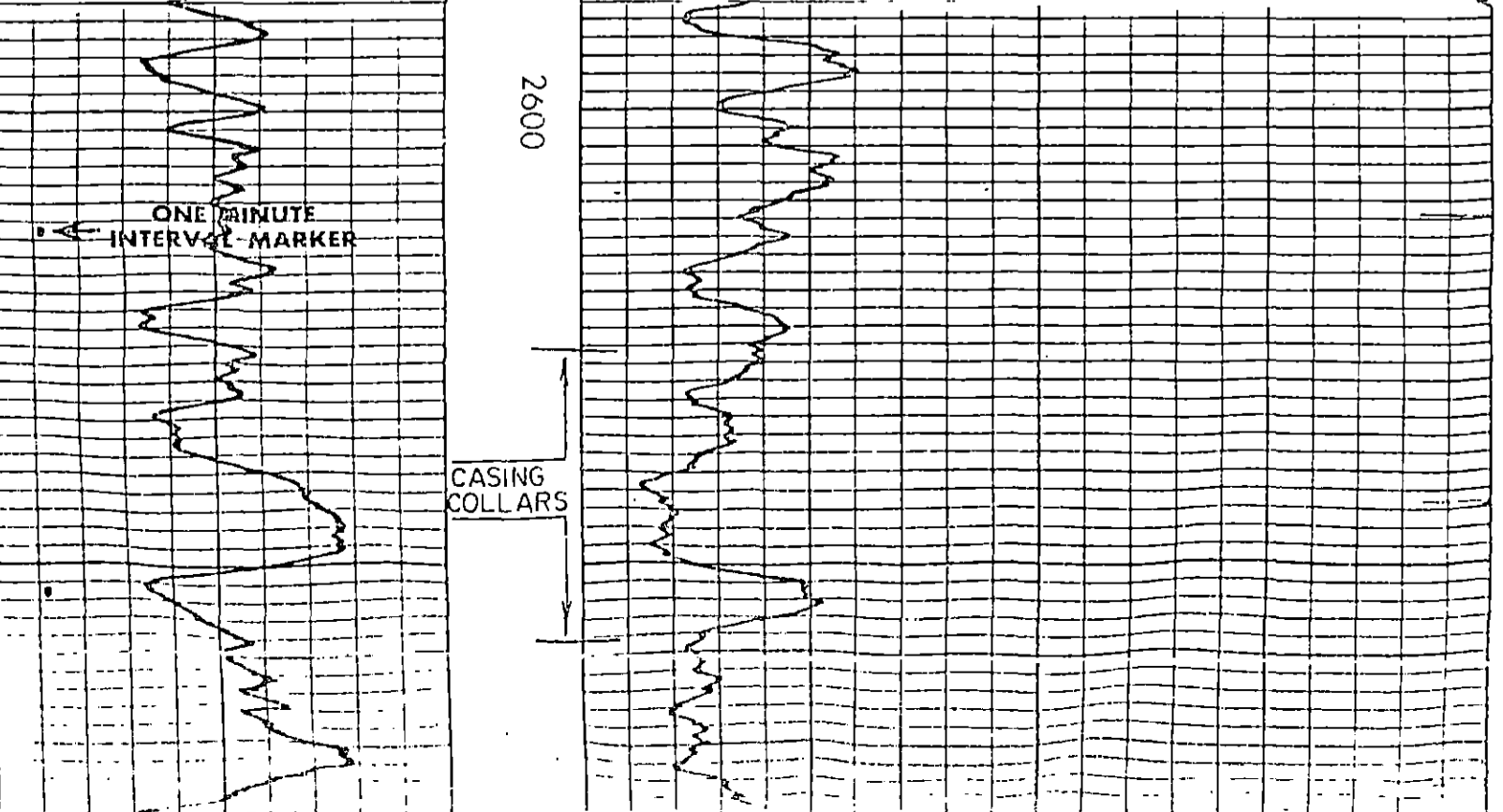
GAMMA

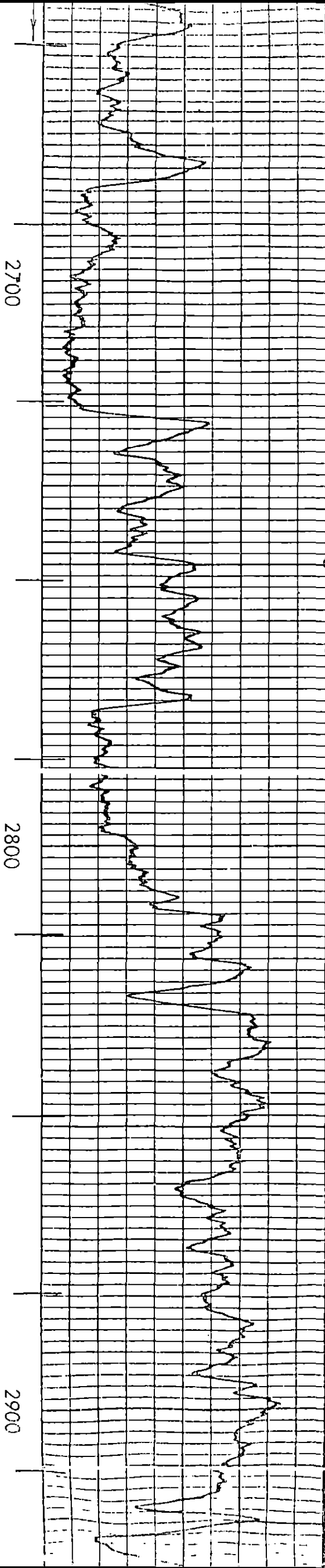
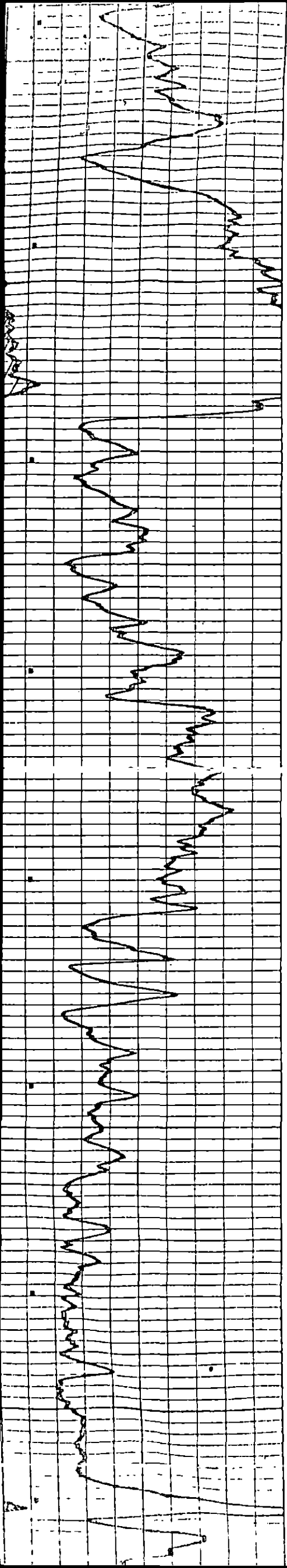
API Gamma Ray Units

NEUTRON

API Neutron Units

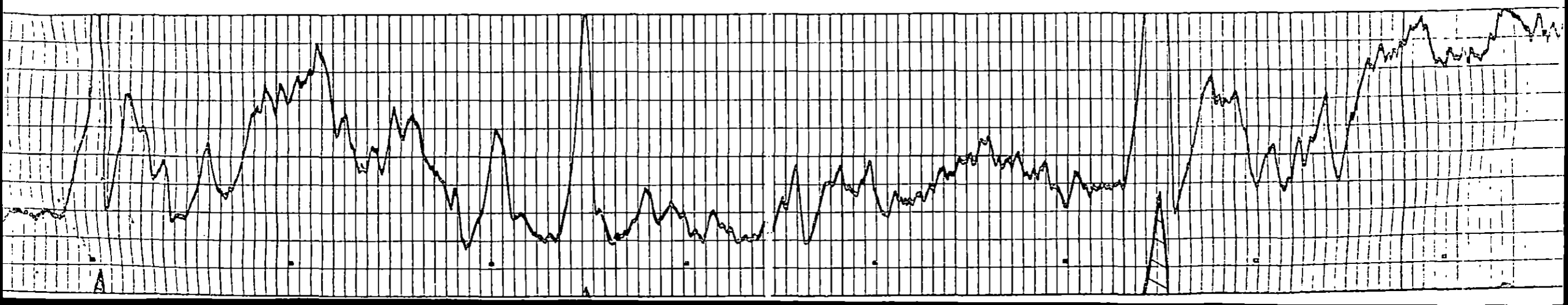
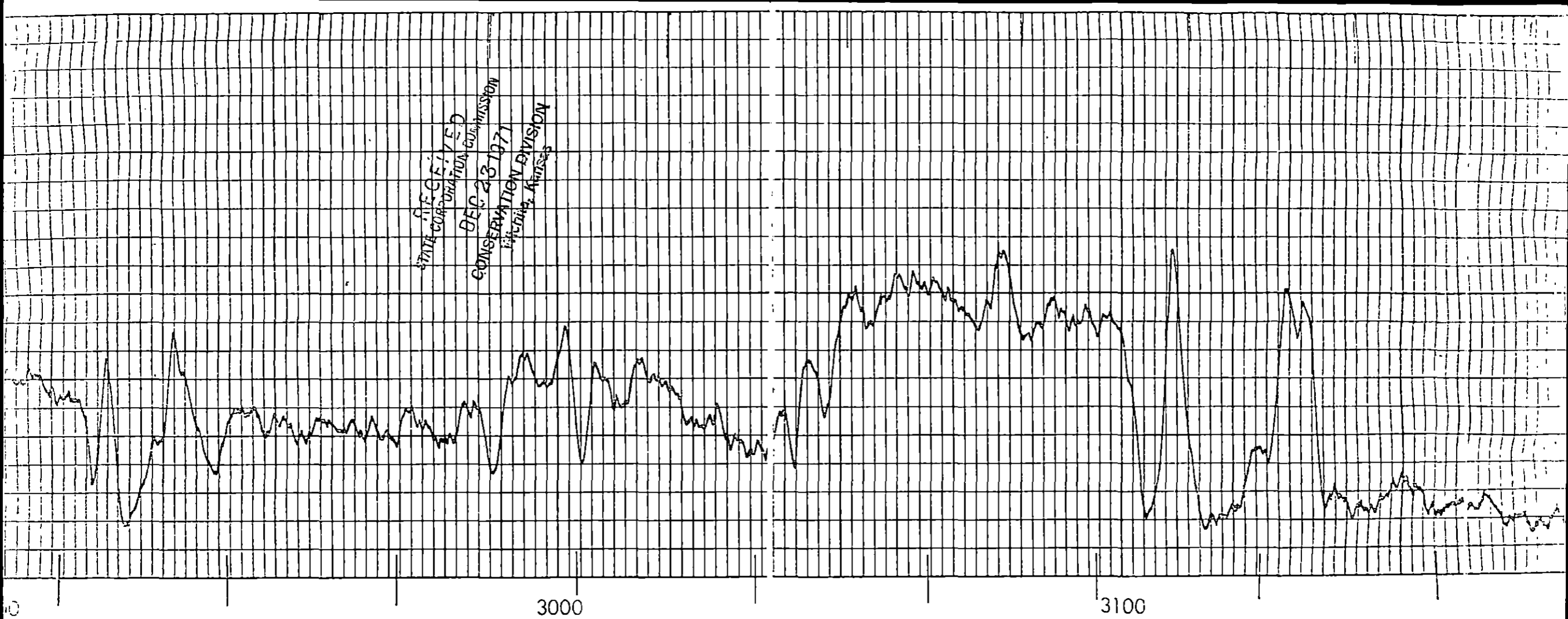
10	110	600	2600
110	310		



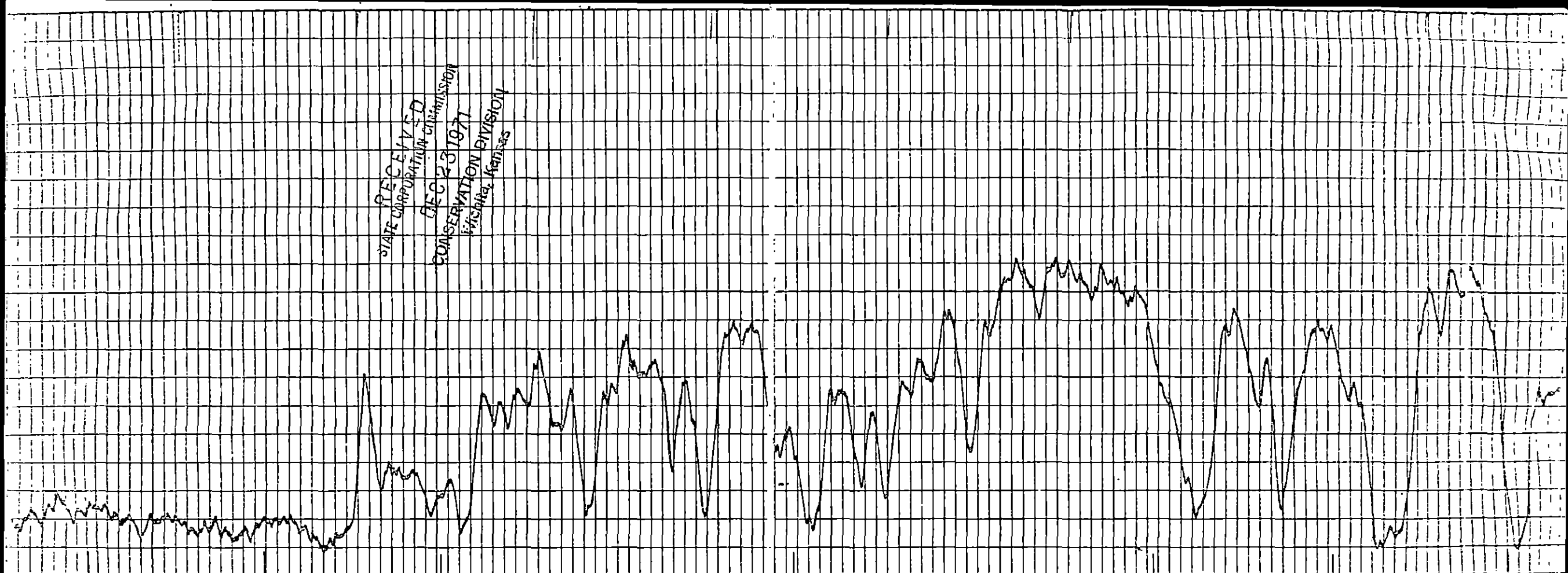


RECEIVED
STATE CORPORATION COMMISSION
DEC 23 1971
CONSERVATION DIVISION
Wichita, Kansas

RECEIVED
STATE CORPORATION COMMISSION
DEC 23 1971
CONSERVATION DIVISION
MURKIN, KANSAS



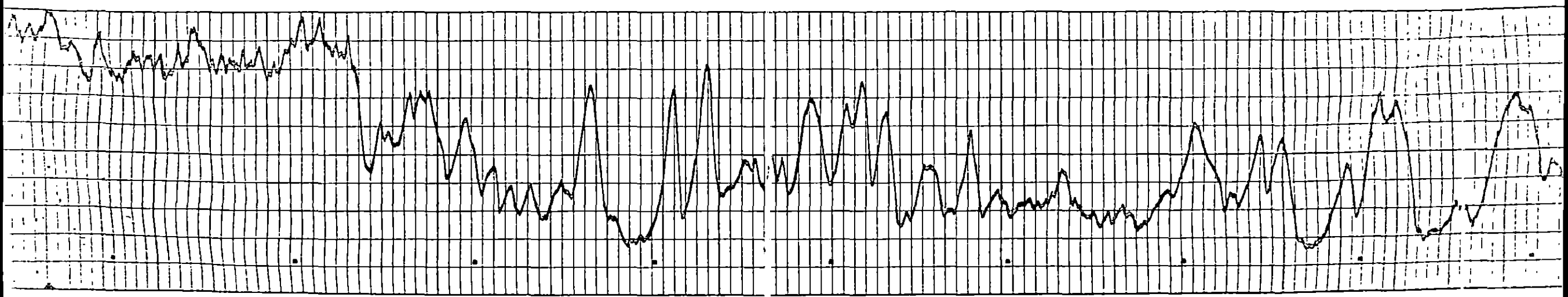
RECEIVED
STATE CORPORATION COMMISSION
FEC 23 1971
CONSERVATION DIVISION
Wichita, Kansas

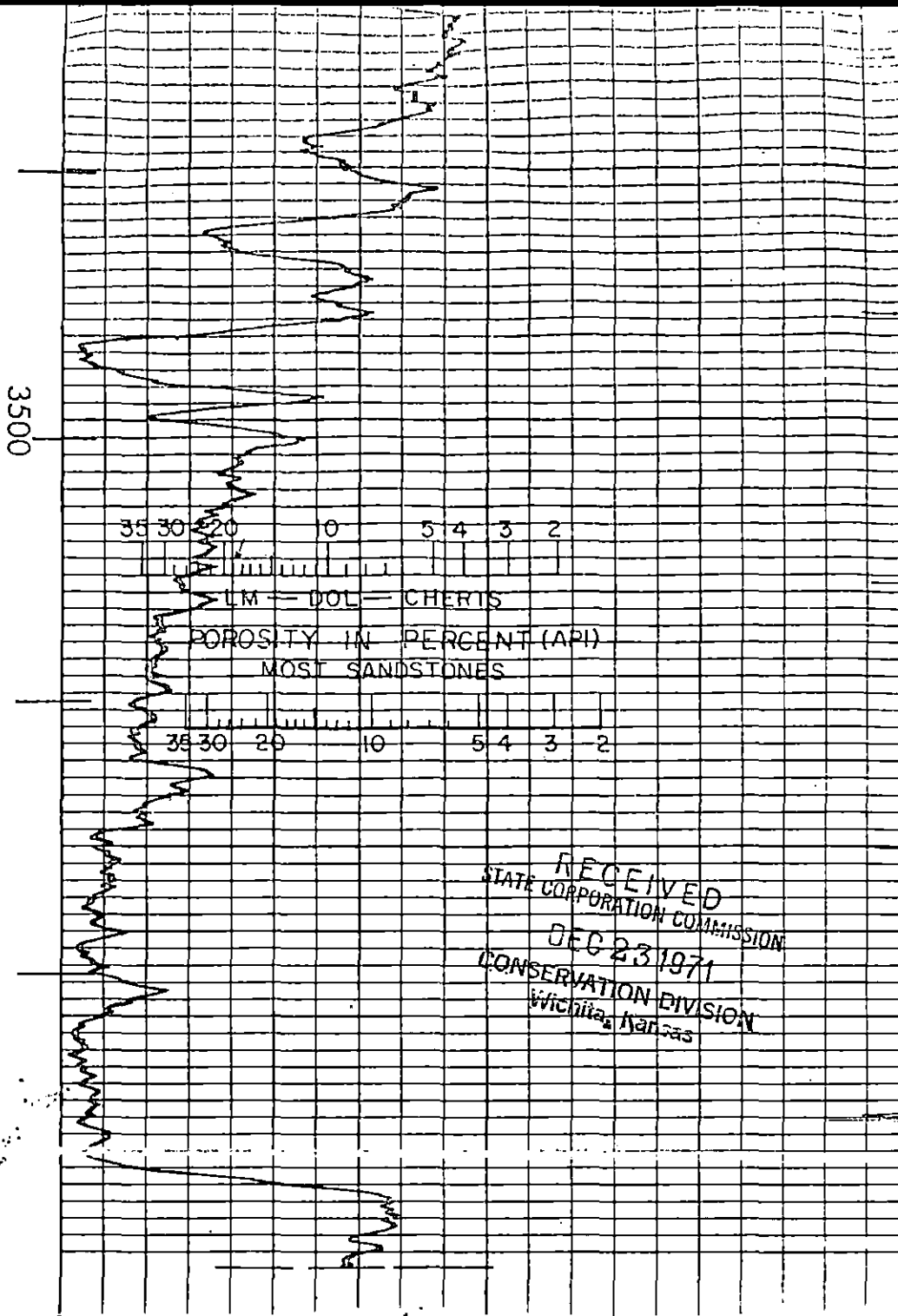
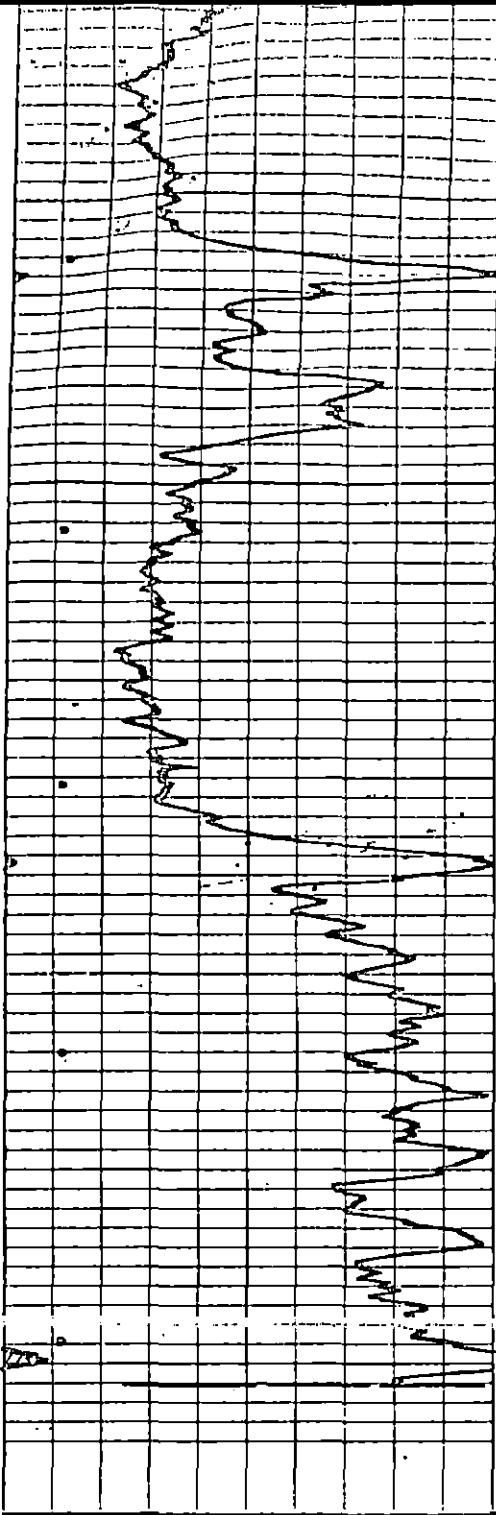


3200

3300

3400



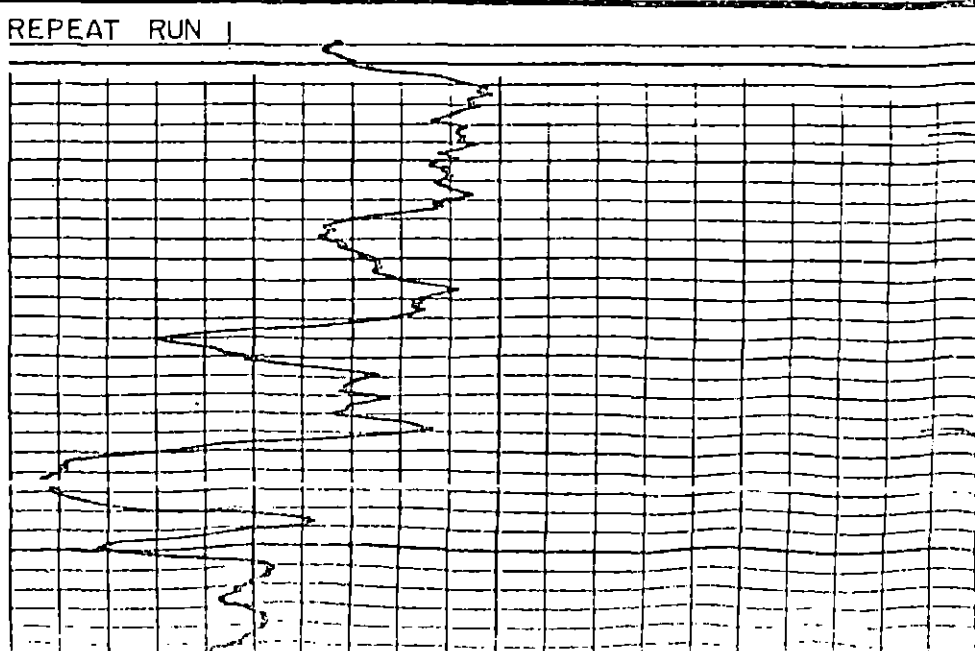
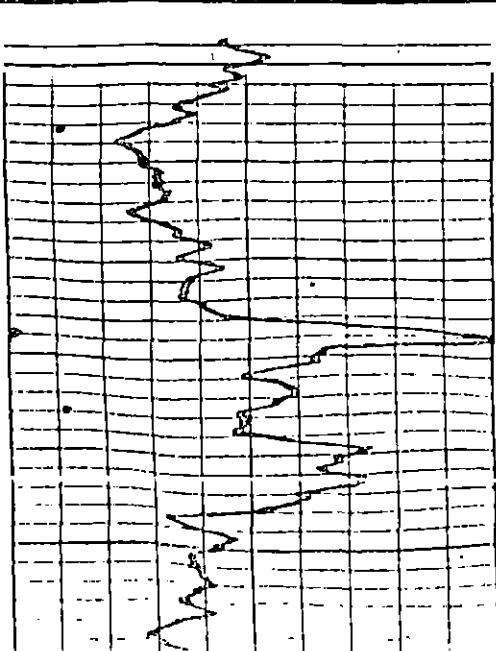


RECEIVED
STATE CORPORATION COMMISSION
DEC 23 1971
CONSERVATION DIVISION
Wichita, Kansas

10	110
110	310
GAMMA API Gamma Ray Units	

600	2600
NEUTRON API Neutron Units	

T.D. GAMMA	3592'	T.D. NEUTRON-GAMMA	3600
PAN AMERICAN PETROLEUM CORP.		T.D. DRILLER	3601
SIEFKES # 2 "A"		T.D. WELEX	3600
MAX FIELD		D.F. ELEV.	1840
STAFFORD COUNTY, KANSAS			
SEC. 3-22S-12W			



REPEAT RUN |

3500

RECEIVED
STATE CORPORATION COMMISSION
DEC 23 1971
CONSERVATION DIVISION
Wichita, Kansas

REPEAT RUN 2

3500

