

15-185-60568-0000

STATE OF KANSAS
STATE CORPORATION COMMISSION

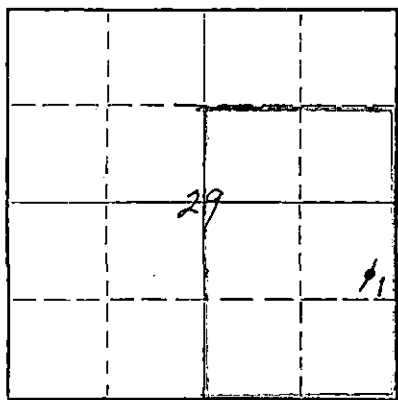
WELL PLUGGING RECORD

Give All Information Completely
Make Required Affidavit
Mail or Deliver Report to:
Conservation Division
State Corporation Commission
211 No. Broadway
Wichita, Kansas

Stafford County, Sec. 29 Twp. 23S Rge. (E) 13 (W)

Location as "NE/CNW%SW%" or footage from lines SE/4 NE/4 SE/4
Lease Owner Skelly Oil Company
Lease Name J. B. Giedinghagen Well No. 1
Office Address P. O. Box 1650, Tulsa, Oklahoma
Character of Well (completed as Oil, Gas or Dry Hole) Dry Hole
Date well completed August 18, 19 57
Application for plugging filed August 19, 19 57
Application for plugging approved August 20, 19 57
Plugging commenced August 19, 19 57
Plugging completed August 19, 19 57
Reason for abandonment of well or producing formation Dry Hole

NORTH



Locate well correctly on above
Section Plat

If a producing well is abandoned, date of last production 19
Was permission obtained from the Conservation Division or its agents before plugging was commenced? Yes

Name of Conservation Agent who supervised plugging of this well Mr. R. M. Brundage
Producing formation _____ Depth to top _____ Bottom _____ Total Depth of Well 4046 Feet
Show depth and thickness of all water, oil and gas formations.

OIL, GAS OR WATER RECORDS

CASING RECORD

| FORMATION | CONTENT | FROM | TO | SIZE | PUT IN | PULLED OUT |
|---------------|---------|-------|-------|--------|--------|------------|
| Arbuckle Lime | Dry | 3998' | 4046' | 8-5/8" | 785' | None |
| | | | | | | |
| | | | | | | |
| | | | | | | |
| | | | | | | |
| | | | | | | |
| | | | | | | |
| | | | | | | |
| | | | | | | |
| | | | | | | |

Describe in detail the manner in which the well was plugged, indicating where the mud fluid was placed and the method or methods used in introducing it into the hole. If cement or other plugs were used, state the character of same and depth placed, from _____ feet to _____ feet for each plug set.

| | |
|--------------------|---------------|
| Heavy mud | 4046' to 240' |
| Crushed rock | 240' to 230' |
| 25 sacks of cement | 230' to 165' |
| Heavy mud | 165' to 20' |
| Crushed rock | 20' to 17' |
| 10 sacks of cement | 17' to 5' |
| Surface soil | 5' to 0' |

9-6-57

SEP 6 1957
DIVISION

(If additional description is necessary, use BACK of this sheet)
Name of Plugging Contractor Claude Wentworth Drilling Co., Inc.
Address 2701 East 15th, Tulsa, Oklahoma

STATE OF Kansas COUNTY OF Reno ss.
H. E. Wamsley (employee of owner or contractor) of the above-described well, being first duly sworn on oath, says: That I have knowledge of the facts, statements, and matters herein contained and the log of the above-described well as filed and that the same are true and correct. So help me God.

(Signature) [Signature]
Box 391, Hutchinson, Kansas (Address)

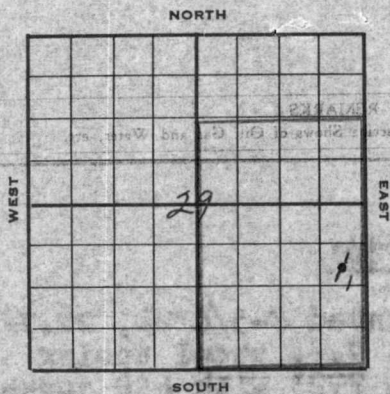
SUBSCRIBED AND SWORN TO before me this 5th day of September, 19 57

My commission expires April 7, 1959

Josephine L. Johnson Notary Public.

PLUGGING
FILE SEC 29 T. 23 R. 13W
BOOK PAGE 37 LINE 44

SKELLY OIL COMPANY



Well Record

Lease Name and No. J. N. Gledinghagen Well No. 1 Elev. 1895' RB
 Lease Description 1/2 1/4 (except the west 9.7 rods of the north 1/4 rods thereof) and the 1/4 sec. 29-23-13W, Stafford Co., Kans.) (238 Acres)
 Location made July 25, 1937 by F. L. Nixon
1650 feet from North line 330 feet from East line 330 feet from South line 330 feet from West line of sec. 29

Work com'd 7/29 1937 Rig com'd 7/30 1937 Drlg. com'd 7/30 1937 Drlg. comp'd 8/17 1937

Rig Contractor Claude Wentworth Drilling Co., Inc.
 Drilling Contractor Claude Wentworth Drilling Co., Inc., Tulsa, Oklahoma

Rotary Drilling from 0' to 4046' Cable Tool Drilling from _____ to _____

Commenced Producing DRY HOLE 1937 Initial Prod. before shot or acid _____ Bbls.
 Initial Prod. after shot or acid _____ Bbls.

Dry Gas Well Press. _____ Volume _____ Cu. ft.

Casing Head Gas Pressure _____ Volume _____ Cu. ft.

Braden Head (_____ Size) Gas Pressure _____ Volume _____ Cu. ft.

Braden Head (_____ Size) Gas Pressure _____ Volume _____ Cu. ft.

PRODUCING FORMATION DRY HOLE (Name) Top _____ Bottom _____ TOTAL DEPTH 4046'

CASING RECORD

| OD Size | Wt. | Thds. | Where Set | PULLED OUT | | | LEFT IN | | | KIND | Cond'n | CEMENTING | |
|---------|--------|-------|-----------|------------|------|-----|---------|------|-----|-------|--------|------------|-----------------|
| | | | | Jts. | Feet | In. | Jts. | Feet | In. | | | Sacks Used | Method Employed |
| 8-5/8" | 22.750 | 792' | | | | | 20 | 785' | | Armed | A | 430 | Halliburton |
| | | | | | | | | | | | | | |
| | | | | | | | | | | | | | |
| | | | | | | | | | | | | | |
| | | | | | | | | | | | | | |
| | | | | | | | | | | | | | |
| | | | | | | | | | | | | | |
| | | | | | | | | | | | | | |

Liner Set at _____ Length _____ Perforated at _____

Liner Set at _____ Length _____ Perforated at _____

Packer Set at _____ Size and Kind _____

Packer Set at _____ Size and Kind _____

SHOT OR ACID TREATMENT RECORD

| | FIRST | SECOND | THIRD | FOURTH |
|-------------------------------------|-------------|-------------|-------------|-------------|
| Date | | | | |
| Acid Used | | | | |
| Size Shot | | | | |
| Shot Between | Ft. and Ft. | Ft. and Ft. | Ft. and Ft. | Ft. and Ft. |
| Size of Shell | | | | |
| Put in by (Co.) | | | | |
| Length anchor | | | | |
| Distance below Cas'g | | | | |
| Damage to Casing or Casing Shoulder | | | | |

SIGNIFICANT GEOLOGICAL FORMATIONS

| NAME | Top | Bottom | GAS | | OIL | | REMARKS |
|--------------|-------|--------|------|----|------|----|---------|
| | | | From | To | From | To | |
| Topoka | 3045' | | | | | | |
| Heebner | 3357' | | | | | | |
| Toronto | 3378' | | | | | | |
| Douglas | 3394' | | | | | | |
| Lansing Line | 3519' | | | | | | |
| Conglomerate | 3861' | | | | | | |
| Viola Line | 3878' | | | | | | |
| Simpson | 3959' | | | | | | |
| Arbuckle | 3998' | | | | | | |

CLEANING OUT RECORDS

| | DATE COMMENCED | DATE COMPLETED | PROD. BEFORE | PROD. AFTER | REMARKS |
|-----|----------------|----------------|--------------|-------------|--------------------------------|
| 1st | | | | | See Reverse for other details. |
| 2nd | | | | | " " " " " |
| 3rd | | | | | " " " " " |
| 4th | | | | | " " " " " |

PLUGGING BACK AND DEEPENING RECORDS

| | Date Commenced | Date Completed | No. Feet Plugged Back or Deepened | Prod. Before | Prod. After | REMARKS |
|-----|----------------|----------------|-----------------------------------|--------------|-------------|--------------------------------|
| 1st | | | | | | See Reverse for other details. |
| 2nd | | | | | | " " " " " |
| 3rd | | | | | | " " " " " |
| 4th | | | | | | " " " " " |

(See Reverse for Record of Formation)

12-182-00228-0000

RECORD OF FORMATIONS

| FORMATION | TOP | BOTTOM | REMARKS |
|---|------|--------|---|
| | | | Indicate Casing Points, Describe Shows of Oil, Gas and Water, etc. |
| Top soil, shale | 0 | 270 | |
| Sand, shale | 270 | 350 | |
| Shale | 350 | 775 | <u>TOP ANHYDRITE 780'</u> |
| Anhydrite | 775 | 792 | Set and cemented 8-5/8" OD, 22.7% Armo, S.W., U.I. steel casing (A cond.) at 792' with 450 sacks of Pozmix cement. Cement circulated. Finished 11:30 a.m. 8/1/57. |
| Anhydrite | 792 | 808 | <u>TOP ANHYDRITE 804'</u> |
| Shale and shells | 808 | 1670 | <u>TOP ANHYDRITE 820'</u> |
| Shale and shells | 1670 | 2831 | <u>TOP ANHYDRITE 1807'</u> |
| | | | <u>TOP ANHYDRITE 2352'</u> |
| | | | <u>TOP ANHYDRITE 2745'</u> |
| | | | (Lost circulation at 2831') |
| | | | <u>TOP ANHYDRITE 2960'</u> |
| | | | <u>TOP ANHYDRITE 3045'</u> |
| | | | <u>TOP ANHYDRITE 3357'</u> |
| | | | <u>TOP ANHYDRITE 3378'</u> |
| | | | <u>TOP ANHYDRITE 3394'</u> |
| | | | <u>TOP ANHYDRITE 3493'</u> |
| Micro-crystalline lime, very little porosity, slight oil stain | 3496 | 3541 | <u>TOP LANSING LIME 3519'</u> Ran Halliburton drill stem test No. 1, packer set at 3496', used 45' anchor, open 30 minutes, weak blow of air for 20 min., recovered 20' of drilling mud, IFF-O, PFP-O, BHP-30' in 30 minutes. |
| Line | 3541 | 3622 | |
| Light, white, finely crystalline lime, vuggy porosity, trace of light oil stain | 3622 | 3629 | |
| Line | 3629 | 3630 | |
| White, finely crystal- line lime, porous, trace of light oil stain | 3630 | 3646 | |
| Line | 3646 | 3665 | |
| White, finely crystalline lime, porous, trace of light oil stain | 3665 | 3684 | |
| Line | 3684 | 3685 | |
| Creamy limestone, vuggy porosity, light oil stain | 3685 | 3693 | |
| White, oolitic lime | 3693 | 3709 | Porous, good light oil stain at 3703' |
| Gray shale and white oolitic limestone | 3709 | 3721 | Porous, light oil stain at 3712'. Ran Halliburton drill stem test No. 2, packer set at 3622', used 99' anchor, open 1 hour, very weak to fair blow, recovered 360' muddy salt water, IFF-O, PFP- 185', BHP-1250' in 20 minutes. |
| Line | 3721 | 3868 | <u>TOP KANSAS CITY 3776'</u> <u>TOP CONGLOMERATE 3861'</u> |
| Variegated shale and vari-colored chert with scattered brown to black dead oil stain, poor porosity | 3868 | 3884 | <u>TOP VIOLET LIME 3878'</u> |
| White opaque to semi- translucent fresh slightly weathered chert | 3884 | 3890 | Scattered brown to black oil stain in wet samples with scattered spots of free oil. |
| | | | Ran Halliburton drill stem test No. 3, packer set at 3839', used 51' anchor, open 1 hour, strong blow declining to weak blow gas, recovered 50' gas, 10' oil specked mud, and 180' of heavy oil out mud, IFF-80', PFP-90', BHP-260' in 30 minutes. |

Line 3890 3948 TOP SIMPSON SHALE 3959'

Green, waxy shale with streaks of sandy shale, white to gray finely granular dolomite to coarsely crystalline very sandy dolomite

3948 3985

Abundant dead oil stain and fair porosity.

Run Halliburton drill stem test No. 4, packer set at 3931', used 54' anchor, open 1 hour, strong blow throughout test, recovered 720' of salt water, IFF-50%, FFP-325%, BHP-840% in 20 minutes.

Line 3985 3996

Gray to tan, fine to coarsely crystalline dolomite, zones of fair to good vuggy to inter-crystalline porosity, no shows

3996 4046

TOP ARBUCKLE LIME 3998'

Run Halliburton drill stem test No. 5, packer set at 3997', used 49' anchor, open 1 hour, strong blow throughout test, recovered 2490' of salt water, IFF-65%, FFP-1160%, BHP-1360% in 30 mins.

TOTAL DEPTH 4046'

Run Schlumberger Survey.

As there were no commercial shows of oil and gas in drilling to the total depth of 4046', regular authority was granted to plug and abandon the well as follows:

| | |
|--------------------|---------------|
| Heavy mud | 4046' to 240' |
| Crushed rock | 240' to 230' |
| 25 sacks of cement | 230' to 165' |
| Heavy mud | 165' to 20' |
| Crushed rock | 20' to 17' |
| 10 sacks of cement | 17' to 5' |
| Surface soil | 5' to 0' |

Plugged and abandoned August 19, 1957.

SLOPE TEST DATA: Tests were taken at 250', 500', 750', 1000', 1200', 1500', 1750', 2000', 2250', 2500', 3000', and 3250' with no deviation from vertical noted.

ROCK LOG SHEET NO. 44
 J. B. GIRDINGHAGEN
 GARDINGHAGEN