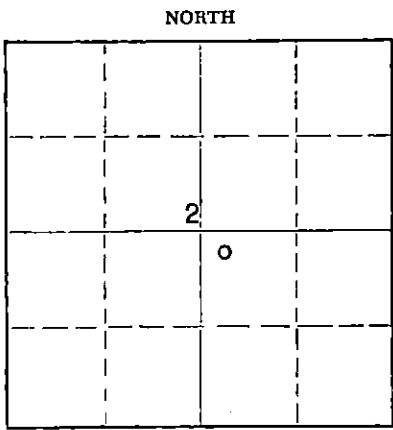


STATE OF KANSAS  
STATE CORPORATION COMMISSION

Give All Information Completely  
Make Required Affidavit  
Mail or Deliver Report to:  
Conservation Division  
State Corporation Commission  
211 No. Broadway  
Wichita, Kansas

WELL PLUGGING RECORD



Locate well correctly on above  
Section Plat

June  
\_\_\_\_\_Pawnee\_\_\_\_\_County, Sec. 2 Twp. 21S Rge. 19 (#1) (W)  
Location as "NE/CNWxSWx" or footage from lines NW NW SE  
Lease Owner Sunray DX Oil Company  
Lease Name Ideker Well No. 1  
Office Address P. O. Box 729, Great Bend, Kansas  
Character of Well (completed as Oil, Gas or Dry Hole) Dry Hole  
Date well completed 2-7 19 64  
Application for plugging filed 2-19 19 64  
Application for plugging approved 2-20 19 64  
Plugging commenced 2-21 19 64  
Plugging completed 2-25 19 64  
Reason for abandonment of well or producing formation  
No commercial oil found  
If a producing well is abandoned, date of last production --- 19 ---  
Was permission obtained from the Conservation Division or its agents before plugging was commenced? Yes

Name of Conservation Agent who supervised plugging of this well Eldon Petty  
Producing formation --- Depth to top --- Bottom --- Total Depth of Well 4375 Feet  
Show depth and thickness of all water, oil and gas formations.

OIL, GAS OR WATER RECORDS				CASING RECORD		
FORMATION	CONTENT	FROM	TO	SIZE	PUT IN	PULLED OUT
				8-5/8"	376'	None
				4-1/2"	-	3651'

Describe in detail the manner in which the well was plugged, indicating where the mud fluid was placed and the method or methods used in introducing it into the hole. If cement or other plugs were used, state the character of same and depth placed, from \_\_\_\_\_ feet to \_\_\_\_\_ feet for each plug set.

Shot off 4-1/2" OD casing at 3635' and pulled and recovered 3651'.  
Set cement plugs, 3 sacks, at 4225', 25 sx. cement at 550', 25 sx.  
at 200' and 15 sx. at 30'. All intervals between cement plugs filled  
with mud laden fluid.

Welded cap on 8-5/8" - all work was approved by Eldon Petty.

RECEIVED  
STATE CORPORATION COMMISSION

MAR 5 1964

CONSERVATION DIVISION  
Wichita, Kansas

(If additional description is necessary, use BACK of this sheet)  
Name of Plugging Contractor Forbes Casing Pulling, Inc.  
Address P. O. Box 221, Great Bend, Kansas

STATE OF KANSAS, COUNTY OF BARTON, ss.  
C. C. SHREVE (employee of owner) or (owner or operator) of the above-described well, being first duly sworn on oath, says: That I have knowledge of the facts, statements and matters herein contained and the log of the above-described well as filed and that the same are true and correct. So help me God.

(Signature) [Signature]  
C. C. Shreve, Dist. Manager  
P. O. Box 729, Great Bend, Kansas  
(Address)

SUBSCRIBED AND SWORN TO before me this 2nd day of March, 1964

My commission expires February 22, 1967  
D. L. Jackson Notary Public.



STATE OF KANSAS  
STATE CORPORATION COMMISSION

WELL PLUGGING RECORD

Give All Information Completely  
Make Required Affidavit  
Mail or Deliver Report to:  
Conservation Division  
State Corporation Commission  
211 No. Broadway  
Wichita, Kansas

Pawnee County, Sec. 2 Twp. 21S Rge. 19W (E) (W)

Location as "NE/CNW%SW%" or footage from lines NW NW SE

Lease Owner Sunray DX Oil Company

Lease Name Ideker Well No. 1

Office Address P. O. Box 729 Great Bend, Kansas

Character of Well (completed as Oil, Gas or Dry Hole)

Date well completed 19

Application for plugging filed 19

Application for plugging approved 19

Plugging commenced 2-21-64 19

Plugging completed 2-25-64 19

Reason for abandonment of well or producing formation Dry

If a producing well is abandoned, date of last production 19

Was permission obtained from the Conservation Division or its agents before plugging was commenced? Yes

Name of Conservation Agent who supervised plugging of this well Petty

Producing formation Depth to top Bottom Total Depth of Well PB 4375 Feet

Show depth and thickness of all water, oil and gas formations.

OIL, GAS OR WATER RECORDS

CASING RECORD

FORMATION	CONTENT	FROM	TO	SIZE	PUT IN	PULLED OUT
				8 5/8	376	None
				4 1/2	None	3658

Describe in detail the manner in which the well was plugged, indicating where the mud fluid was placed and the method or methods used in introducing it into the hole. If cement or other plugs were used, state the character of same and depth placed, from feet to feet for each plug set.

Cleaning out cellar.

Shot well at 3635'. Working pipe. Pulling pipe.

Pulling pipe.

Circulating mud. Spotted 25 sacks of cement. Dumped 10 sacks of cement. Pulled pipe.

RECEIVED  
STATE CORPORATION COMMISSION

FEB 28 1964

CONSERVATION DIVISION

Name of Plugging Contractor Forbes Casing Pulling, Inc. Wichita, Kansas  
Address P. O. Box 221 Great Bend, Kansas

STATE OF Kansas, COUNTY OF Barton, ss.  
J. O. Forbes (employee of owner) or (owner or operator) of the above-described well, being first duly sworn on oath, says: That I have knowledge of the facts, statements, and matters herein contained and the log of the above-described well as filed and that the same are true and correct. So help me God.

(Signature) J. O. Forbes  
P. O. Box 221 Great Bend, Kansas  
(Address)

SUBSCRIBED AND SWORN TO before me this 27 day of February, 1964.

My commission expires May 27, 1964

Notary Public.

DRILLERS' LOG

Company: Sunray DX Oil Co. & Jones-Gebert Oil, Inc.  
 Contractor: Jones-Gebert Oil, Inc.  
 Farm: #1 Ideker, NW NW SE, Sec. 2-21 S-19W Pawnee Co., Kansas  
 Commenced: 1/14/64  
 Completed: 1/27/64  
 Casing: 370' of 8-5/8" w/250 sx. 4-1/2" @4375' w/150 sx.

0	-	140	Surface
140	-	370	Shale
370	-	485	Shale
485	-	680	Shale & red bed
680	-	835	Sand
835	-	1164	Shale & sand
1164	-	1284	Red bed
1284	-	1315	Anhydrite
1315	-	1340	Shale & shells
1340	-	1700	Shale w/shells
1700	-	1985	Shale & lime streaks
1985	-	2070	Shale & shells
2070	-	2170	Lime & shale
2170	-	2315	Lime
2315	-	2455	Lime & shale
2455	-	2530	Lime
2530	-	2680	Lime
2680	-	2800	Lime
2800	-	2935	Lime
2935	-	3100	Lime & shale streaks
3100	-	3231	Shale w/lime streaks
3231	-	3345	Lime & shale
3345	-	3515	Shale & lime
3515	-	3645	Shale & lime
3645	-	3705	Lime
3705	-	3825	Lime
3825	-	3896	Lime
3896	-	3930	Lime
3930	-	4045	Lime
4045	-	4130	Lime
4130	-	4200	Lime
4200	-	4252	Shaly lime & sand
4252	-	4268	Lime & shale
4268	-	4350	Lime
4350	-	4374	Cherty lime
		4374	Rotary Total Depth

**RECEIVED**  
 STATE CORPORATION COMMISSION  
 MAR 5 1964  
 CONSERVATION DIVISION  
 Wichita, Kansas

I, George R. Jones, do hereby certify that the above and foregoing is a true and correct copy of the log of the #1 Ideker, NW NW SE, Sec. 2-21S-19W, Pawnee Co., Kansas, as reflected by the files of Jones-Gebert Oil, Inc.

*George R. Jones*  
 GEORGE R. JONES

State of Kansas, County of Sedgwick ) ss:

Subscribed and sworn to before me, a Notary Public, in and for Sedgwick County, Kansas, this 28th day of January, 1964.

My Commission Expires:

*June 9, 1965*

*Pearl E. Craytor*