

STATE OF KANSAS  
STATE CORPORATION COMMISSION

Form CP-4

Give All Information Completely  
Make Required Affidavit  
Mail or Deliver Report to:  
Conservation Division  
State Corporation Commission  
212 No. Market  
Wichita, Kansas 67202

WELL PLUGGING RECORD

STAFFORD County, Sec. 34 Twp. 21S Rge. 14 (W)

Location as "NE/CNWKSW" or footage from lines SW NE NE

Lease Owner PETROLEUM, INC.,

Lease Name HICKMAN L-KC UNIT Well No. 2-2

Office Address R.R. #2, GREAT BEND, KANSAS

Character of Well (completed as Oil, Gas or Dry Hole) OIL WELL

Date well completed MARCH 17 19 53

Application for plugging filed NOVEMBER 11 19 71

Application for plugging approved NOVEMBER 12 19 71

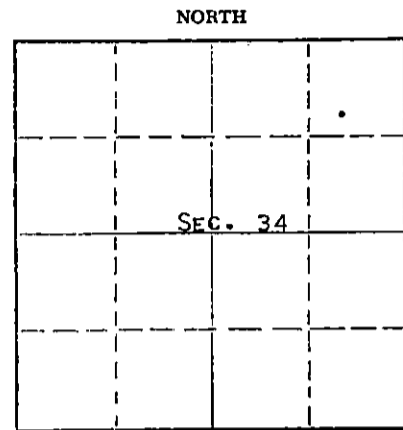
Plugging commenced NOVEMBER 19 19 71

Plugging completed NOVEMBER 26 19 71

Reason for abandonment of well or producing formation DEPLETION OF COMMERCIAL ZONE

If a producing well is abandoned, date of last production JULY 1 19 70

Was permission obtained from the Conservation Division or its agents before plugging was commenced? YES



Locate well correctly on above Section Plat

Name of Conservation Agent who supervised plugging of this well G. R. BIBERSTEIN

Producing formation KANSAS CITY Depth to top Bottom Total Depth of Well 3645 Feet

Show depth and thickness of all water, oil and gas formations.

OIL, GAS OR WATER RECORDS

CASING RECORD

FORMATION	CONTENT	FROM	TO	SIZE	PUT IN	PULLED OUT
KANSAS CITY	SMALL AMOUNT OF OIL & WATER			8-5/8" 5-1/2"	UNKNOWN 3645'	NONE 2984'

Describe in detail the manner in which the well was plugged, indicating where the mud fluid was placed and the method or methods used in introducing it into the hole. If cement or other plugs were used, state the character of same and depth placed, from feet to feet for each plug set.

PLUGGED BACK TOTAL DEPTH 3613'. SANDED HOLE FROM 3613' TO 3525', DUMPED 5 SACKS CEMENT FROM 3525' TO 3485'. GLOBE OILWELL CEMENTING, INC., PUMPED 2 SACKS HULLS, 15 SACKS OF GEL AND 100 SACKS CEMENT TO BASE OF WELL CELLAR.

RECEIVED  
STATE CORPORATION COMMISSION  
DEC 7 1971  
CONSERVATION DIVISION  
Wichita, Kansas

(If additional description is necessary, use BACK of this sheet)

Name of Plugging Contractor SANTA FE PIPE & SUPPLY, INC.,

Address BOX 562, GREAT BEND, KANSAS

STATE OF KANSAS, COUNTY OF BARTON, ss.

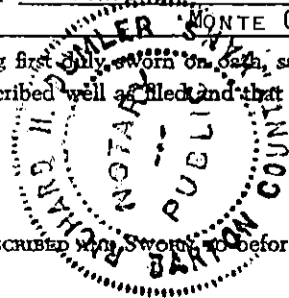
MONTE CHADD (employee of owner) or (operator) of the above-described well, being first duly sworn on oath, says: That I have knowledge of the facts, statements, and matters herein contained and the log of the above-described well as filed and that the same are true and correct. So help me God. MONTE CHADD, PROD. SUPT.

(Signature)

R.R. #2, GREAT BEND, KANSAS

(Address)

Subscribed and sworn to before me this 6 day of DECEMBER, 1971



My commission expires MAY 28, 1973

Notary Public.