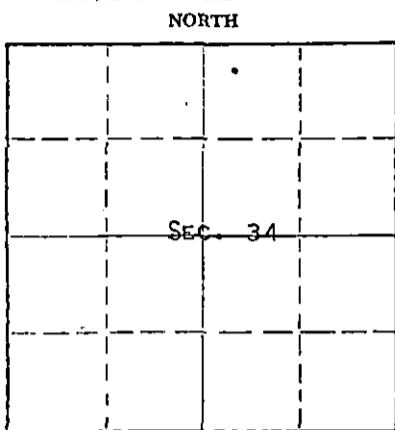


STATE OF KANSAS  
STATE CORPORATION COMMISSION

Form CP-4

Give All Information Completely  
Make Required Affidavit  
Mail or Deliver Report to:  
Conservation Division  
State Corporation Commission  
212 No. Market  
Wichita, Kansas 67202

WELL PLUGGING RECORD



Locate well correctly on above  
Section Plat

STAFFORD County, Sec. 34 Twp. 21<sup>S</sup> Rge. 14 (EX) (W)  
Location as "NE/CNWSW" or footage from lines NW NW NE  
Lease Owner PETROLEUM, INC.  
Lease Name HICKMAN I-KC UNIT Well No. 1-1  
Office Address ROUTE 2, GREAT BEND, KANSAS  
Character of Well (completed as Oil, Gas or Dry Hole) OIL WELL  
Date well completed MARCH 14 1951  
Application for plugging filed NOVEMBER 2 1971  
Application for plugging approved NOVEMBER 3 1971  
Plugging commenced NOVEMBER 4 1971  
Plugging completed NOVEMBER 26 1971  
Reason for abandonment of well or producing formation DEPLETION OF COMMERCIAL ZONE

If a producing well is abandoned, date of last production OCTOBER 8 1971  
Was permission obtained from the Conservation Division or its agents before plugging was commenced? YES

Name of Conservation Agent who supervised plugging of this well G. R. BIBERSTEIN  
Producing formation KANSAS CITY Depth to top Bottom Total Depth of Well 3804 Feet  
Show depth and thickness of all water, oil and gas formations.

OIL, GAS OR WATER RECORDS

CASING RECORD

FORMATION	CONTENT	FROM	TO	SIZE	PUT IN	PULLED OUT
KANSAS CITY	SMALL AMOUNT OF WATER & OIL			8-5/8"	234'	NONE
				5-1/2"	3802'	2351'

Describe in detail the manner in which the well was plugged, indicating where the mud fluid was placed and the method or methods used in introducing it into the hole. If cement or other plugs were used, state the character of same and depth placed, from feet to feet for each plug set.

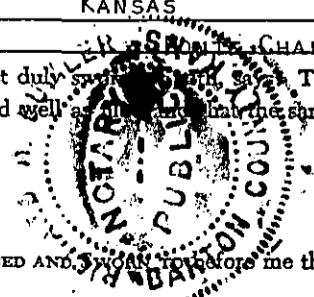
PLUGGED BACK TOTAL DEPTH 3565'. SANDED HOLE FROM 3565' TO 3465'. DUMPED 5 SACKS CEMENT FROM 3465' TO 3425'. GLOBE OILWELL CEMENTING, INC., PUMPED 2 SACKS HULLS, 15 SACKS OF GEL AND 100 SACKS CEMENT TO BASE OF WELL CELLAR.

RECEIVED  
STATE CORPORATION COMMISSION  
DEC 7 1971  
CONSERVATION DIVISION  
Wichita, Kansas

(If additional description is necessary, use BACK of this sheet)

Name of Plugging Contractor SANTA FE PIPE & SUPPLY, INC.,  
Address BOX 562, GREAT BEND, KANSAS

STATE OF KANSAS, COUNTY OF BARTON, ss.  
MONTY CHADD (employee of owner) or (owner or operator) of the above-described well, being first duly sworn, depose and say that I have knowledge of the facts, statements, and matters herein contained and the log of the above-described well and that the same are true and correct. So help me God. MONTY CHADD, DIS. PROD. SUPT.



(Signature) [Signature]  
R.R. #2, GREAT BEND, KANSAS (Address)

SUBSCRIBED AND SWORN to before me this 6 day of DECEMBER 1971

My commission expires MAY 28, 1973 [Signature] Notary Public.

KANSAS WELL LOG BUREAU --- KANSAS GEOLOGICAL SOCIETY **COPY**

308 EAST MURDOCK - WICHITA, KANSAS

COMPANY PETROLEUM, INC.

SEC. 34 T. 21 R. 14W  
 LOC. NW NW NE

FARM Smith "A"

NO. 1

TOTAL DEPTH 3804'

COMM. 2-22-51

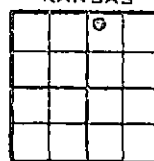
COMP. 3-6-51'

SHOT OR TREATED

CONTRACTOR Garvey Oil

ISSUED 5-19-51

COUNTY Stafford  
 KANSAS



CASING  
 8 5/8" 230'  
 5 1/2" 3802'

ELEVATION 1941 K. B.

PRODUCTION I. P. P. 1381 bbls.  
 & no wtr.

FIGURES INDICATE BOTTOM OF FORMATIONS

clay & sand	70
sand & gravel	130
sand & shale	210
shale & shells	280
sand	345
red bed	834
anhydrite	859
shale & shells	1735
shale & lime	1995
lime	2090
lime & shale	2470
shale & shells	2770
lime & shale	2795
shale & shells	2909
lime & shale	3005
lime	3130
lime & shale	3198
lime	3232
lime & shale	3385
lime	3630
lime & shale	3671
conglomerate	3679
viola	3714
simpson	3723
shale	3755
lime	3804RTD
Total depth	

Tops:	
Heebner	3275
Toronto	3296
Brown Lime	3395
Lansing	3404
Base, K. C.	3632
Viola	3676
Simpson	3720
Arbuckle	3757

RECEIVED  
 STATE CORPORATION COMMISSION  
 DEC 7 1971  
 CONSERVATION DIVISION  
 Wichita, Kansas