

STATE OF KANSAS
STATE CORPORATION COMMISSION
200 Colorado Derby Building
Wichita, Kansas 67202

WELL PLUGGING RECORD
K.A.R.-82-5-117

15.185.00458.0001

API NUMBER April 16, 1951

LEASE NAME Newcombe "A"

WELL NUMBER 1

330 Ft. from S Section Line

4950 Ft. from E Section Line

SEC. 5 TWP. 21S RGE. 13 XX (or (W))

COUNTY Stafford

Date Well Completed 6-3-51

Plugging Commenced 8-8-89

Plugging Completed 8-8-89

TYPE OR PRINT
NOTICE: Fill out completely
and return to Cons. Div.
office within 30 days.

LEASE OPERATOR PETROLEUM, INC.

ADDRESS 301 N. Main - Suite 900, Wichita, KS 67202

PHONE# (316) 291-8200 OPERATORS LICENSE NO. 5238

Character of Well SWD

(Oil, Gas, D&A, SWD, Input, Water Supply Well)

The plugging proposal was approved on August 8, 1989 (date)

by Duane Rankin (KCC District Agent's Name).

Is ACO-1 filed? No If not, is well log attached? Yes

Producing Formation L-KC Depth to Top 3318 Bottom 3533 T.D. 3500

Show depth and thickness of all water, oil and gas formations.

OIL, GAS OR WATER RECORDS

CASING RECORD

Formation	Content	From	To	Size	Put In	Pulled out
				8 5/8"	205	0
				5 1/2"	3651	0

Describe in detail the manner in which the well was plugged, indicating where the mud fluid was placed and the method or methods used in introducing it into the hole. If cement or other plugs were used, state the character of same and depth placed, from feet to feet each set.
Hole was plugged from TD to surface with 200# Hulls and 125 sx. ATL cement.

(If additional description is necessary, use BACK of this form.)

Name of Plugging Contractor Allied cementing Co., Inc.

Address Box 678, N. Hwy. 281, Great Bend, KS 67530

NAME OF PARTY RESPONSIBLE FOR PLUGGING FEES: Petroleum, Inc.

STATE OF Kansas COUNTY OF Sedgwick, ss.

Paul Kreutzer

(Employee of Operator) or (Operator) of above-described well, being first duly sworn on oath, says: That I have knowledge of the facts, statements, and matters herein contained and the log of the above-described well as filed that the same are true and correct, so help me God.

(Signature) Paul Kreutzer

(Address) 301 N. Main Suite 900, Wichita, KS



My Commission Expires: 3-20-90

RECEIVED
STATE CORPORATION COMMISSION
License No.
AUG 14 1989

CONSERVATION DIVISION
Wichita, Kansas

LANE RADIOACTIVITY LOG WELLS COMPANY

15.185.00458.0000

FILE NO.

Location of Well SW SW SW 5-215-13W	COMPANY: PETROLEUM INC. WELL: NEWCOMB NO. 1 FIELD: HUFFORD COUNTY: STAFFORD STATE: KANSAS LOCATION: SW SW SW SEC. 5-215-13W	COUNTY: STAFFORD STATE: KANSAS LOCATION: SW SW SW SEC. 5-215-13W FIELD: HUFFORD WELL: NEWCOMB NO. 1 COMPANY: PETROLEUM INC.
LOG MEAS. FROM 5' ABOVE TOP WELDED COLLAR ELEV. 1907 DRLG. MEAS. FROM KELLY BUSHING ELEV. 1907 PERM. DATUM TOP WELDED COLLAR ELEV. 1902		

TYPE OF LOG	GAMMA RAY	NEUTRON	
RUN NO.		1	
DATE 4-21-51		4-21-51	
TOTAL DEPTH (DRILLER) 3652		3652	
EFFECTIVE DEPTH (DRILLER) 3628		3628	
TOP OF LOGGED INTERVAL ZERO		ZERO	
BOTTOM OF LOGGED INTERVAL 3626		3626	
TYPE OF FLUID IN HOLE WATER		WATER	
FLUID LEVEL 3624		3624	
MAXIMUM RECORDED TEMP.		60.0	
NEUTRON SOURCE STRENGTH & TYPE		S. 25	
SOURCE SPACING — IN.		2	
LENGTH OF MEASURING DEVICE — IN. 36		3 5/8	
O.D. OF INSTRUMENT — IN. 3 5/8		11	
TIME CONSTANT — SECONDS 11		25/45	
LOGGING SPEED FT./MIN. 25/45		275	
STATISTICAL VARIATION — IN.		275	
SENSITIVITY REFERENCE 275		SHINDHELM	
RECORDED BY SHINDHELM		WILTSE	
WITNESSED BY WILTSE			

CASING RECORD				OPEN (BORE) HOLE RECORD	
RUN NO.	SIZE—IN.	WT.—LB.	INTERVAL	BIT SIZE—IN.	INTERVAL
	8 5/8	25 1/2	ZERO TO 207'		TO
	5 1/2	11	ZERO TO 3651'		TO
			TO		TO
			TO		TO
			TO		TO

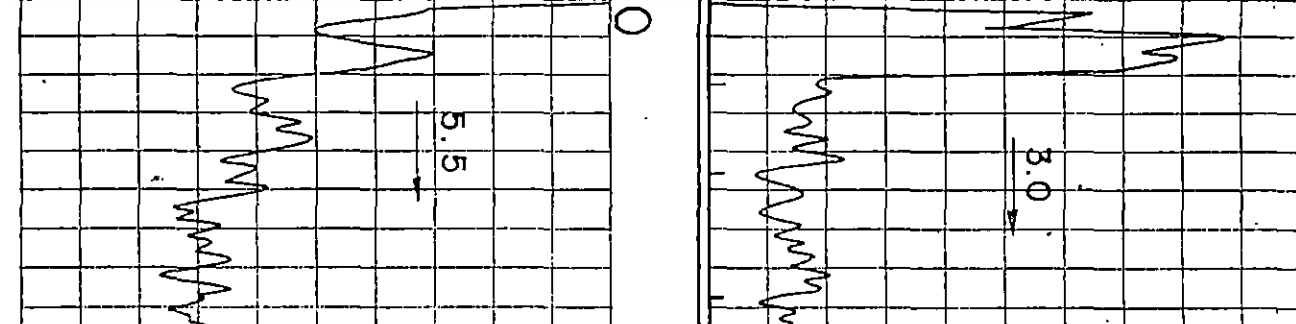
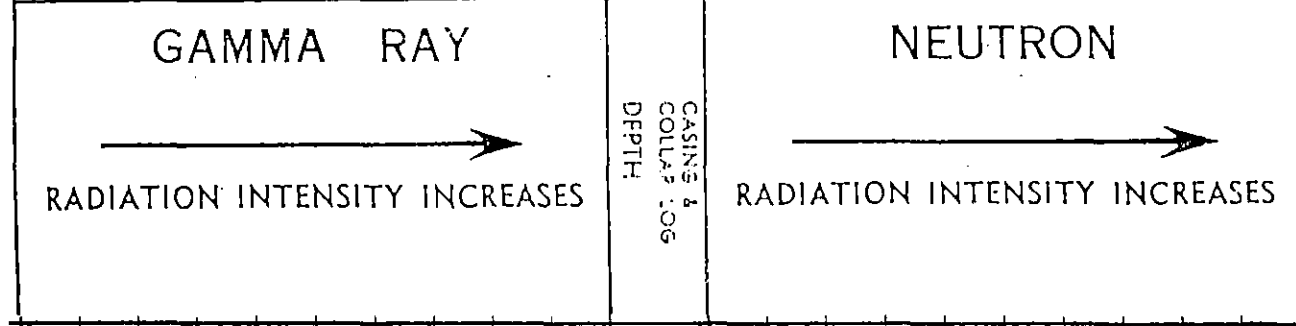
RECEIVED
STATE CORPORATION COMMISSION

REMARKS OR OTHER DATA

NOTE: RESET BY COLLARS TO CUSTOMER'S MEASURE 3628'
 LANE WELLS TOTAL DEPTH 3627'

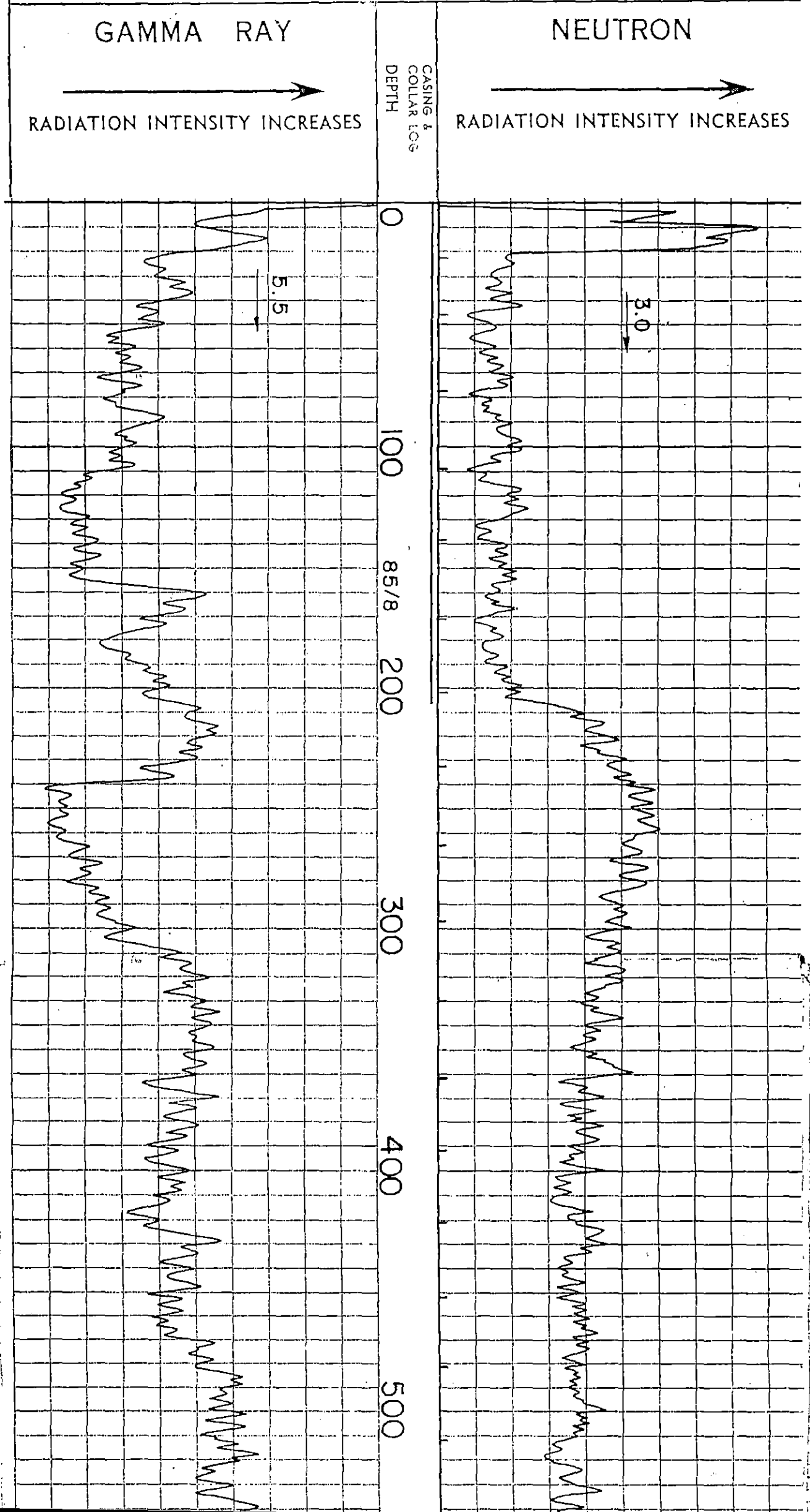
AUG 14 1989
 CONSERVATION DIVISION
 Wichita, Kansas

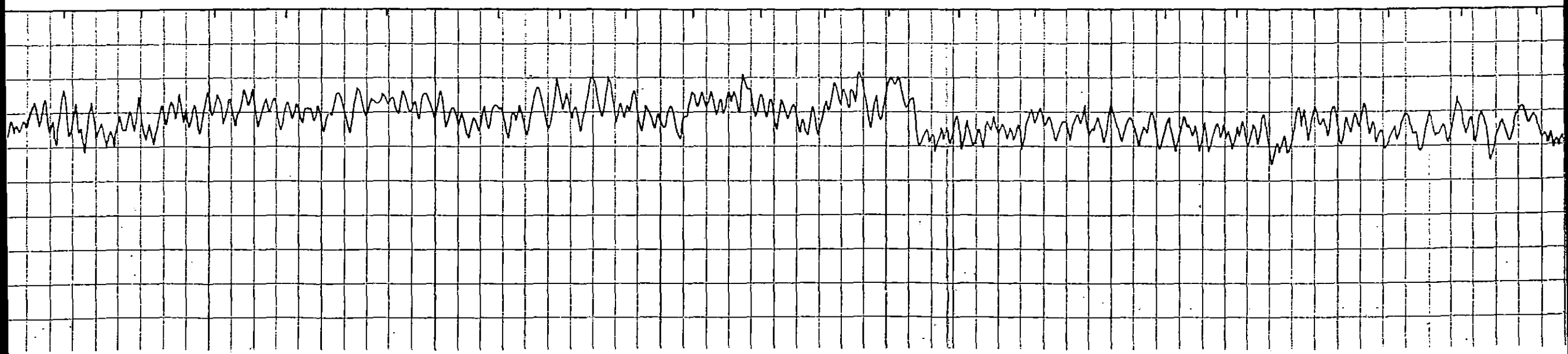
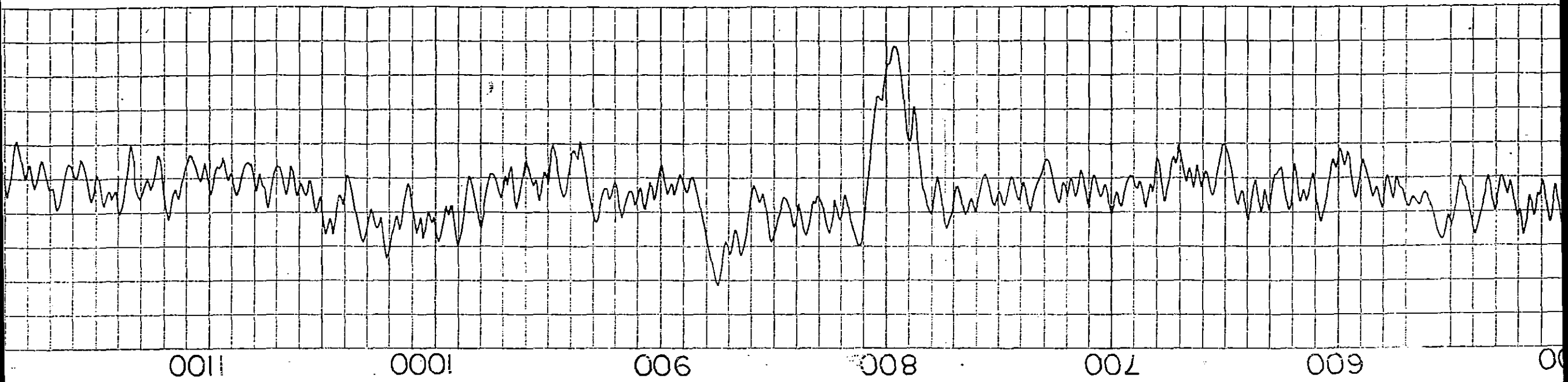
NOTE: 2" SECTION FROM 2700' TO TOTAL DEPTH IS PANTOGRAPH SECTION.



NOTE: RESET BY COLLARS TO CUSTOMER'S MEASURE 3625'
LAND CELLS TOTAL DEPTH 3627'

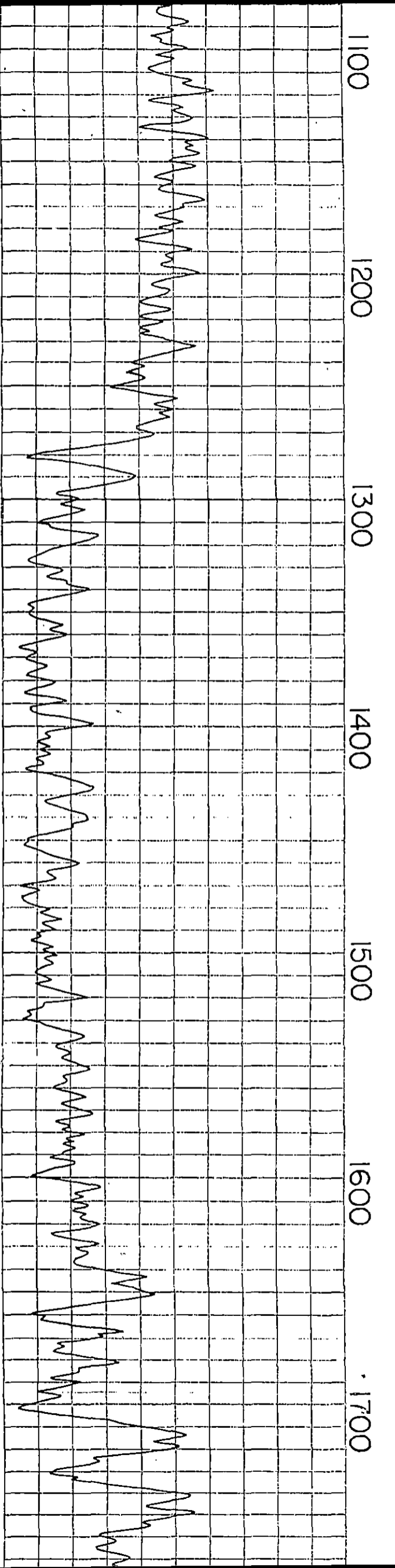
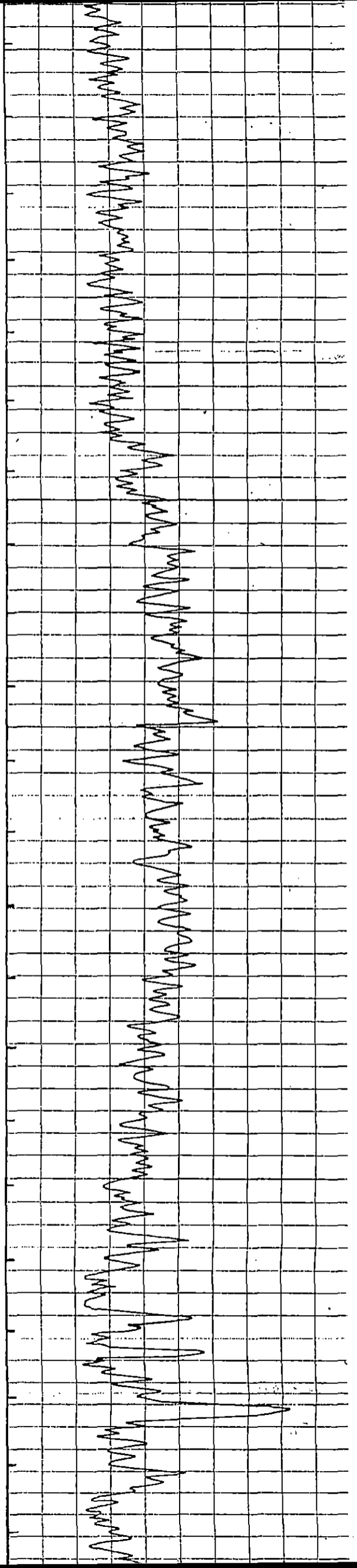
NOTE: 2" SECTION FROM 2700' TO TOTAL DEPTH IS PANTOGRAPH SECTION.

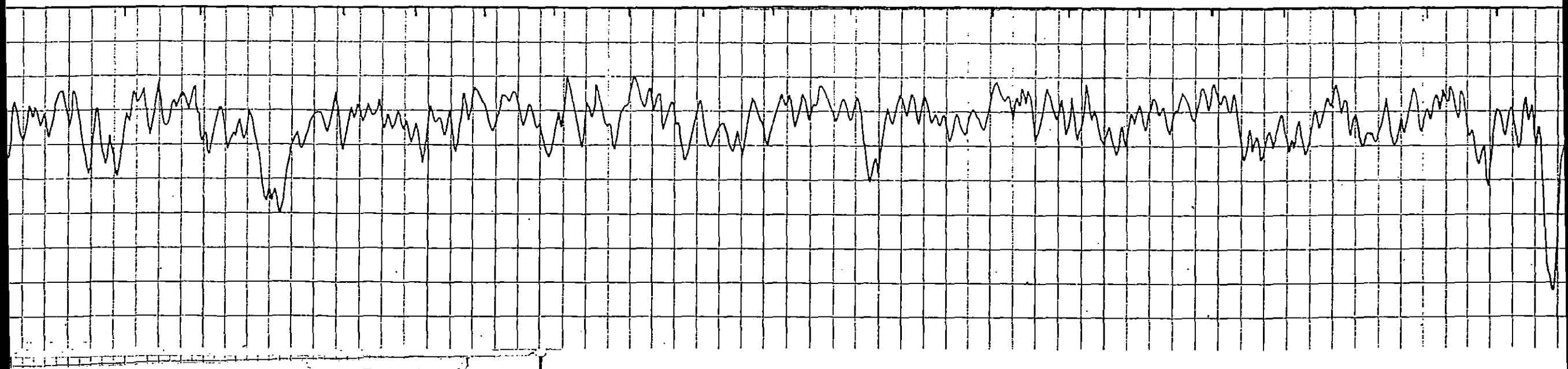
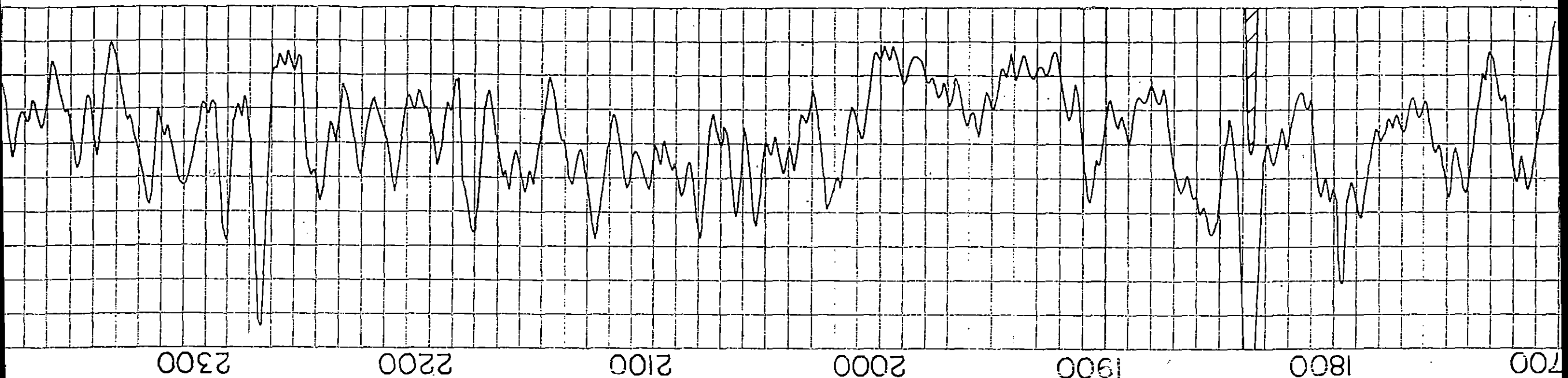




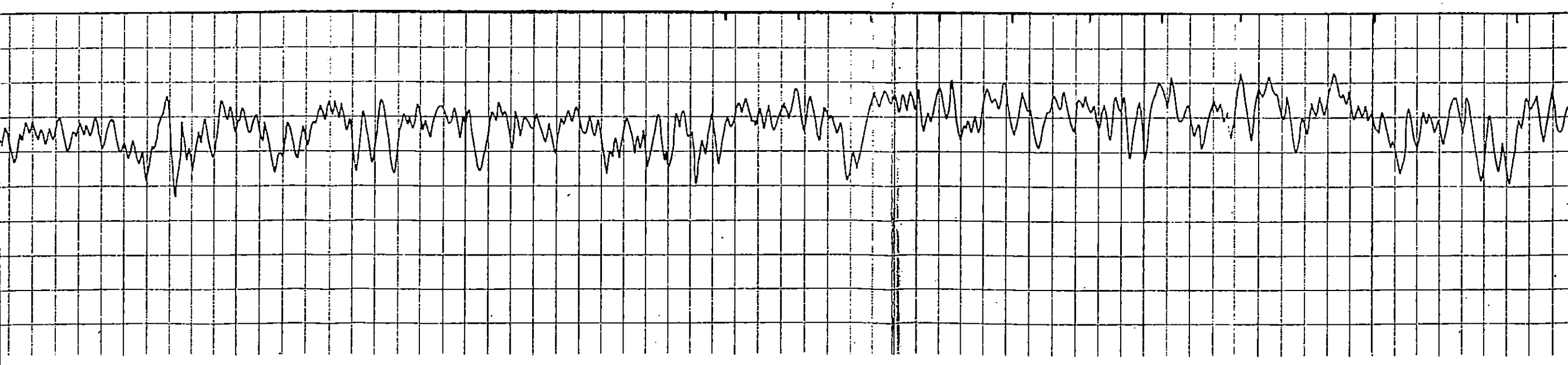
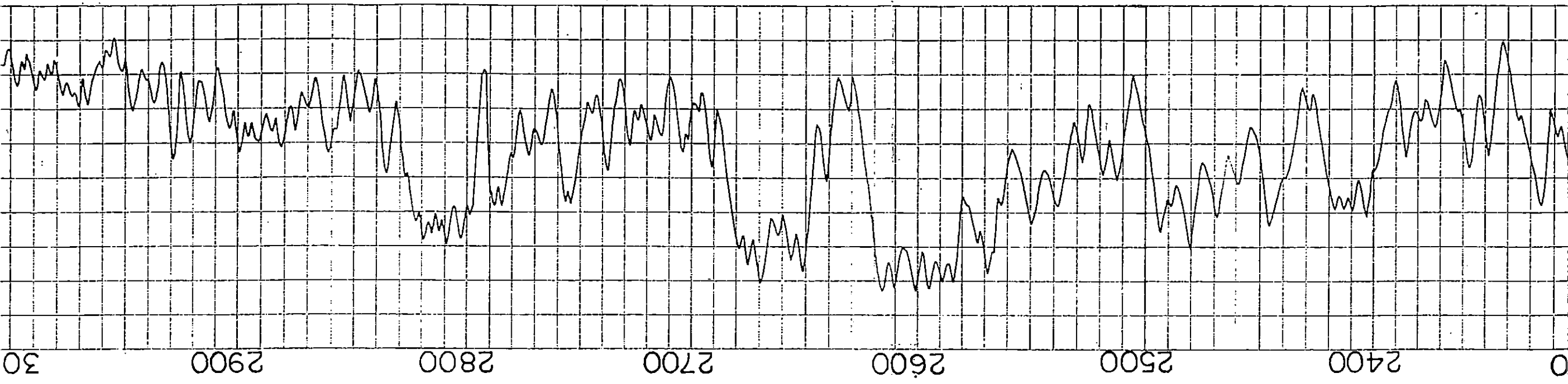
15.185.0048.0000

15.185.00458.0000

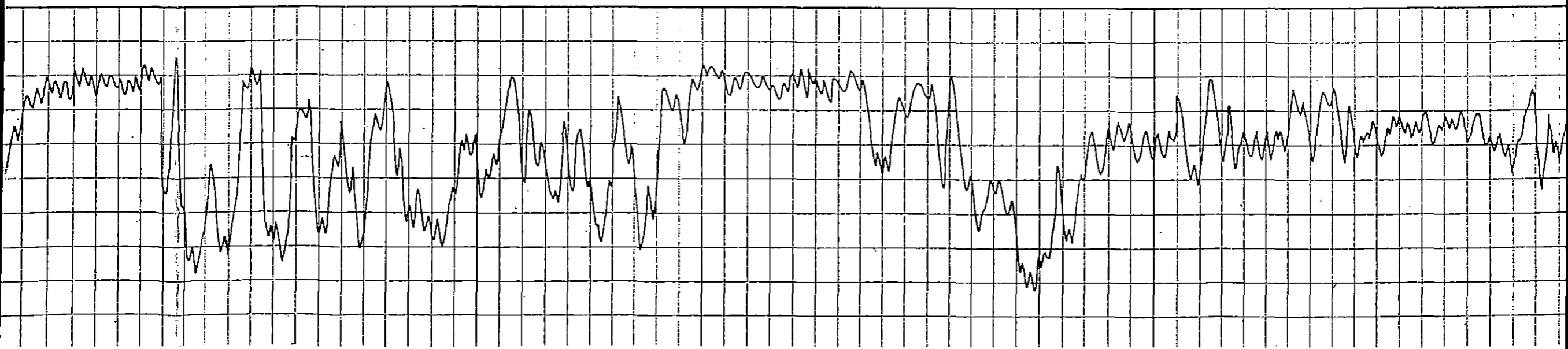
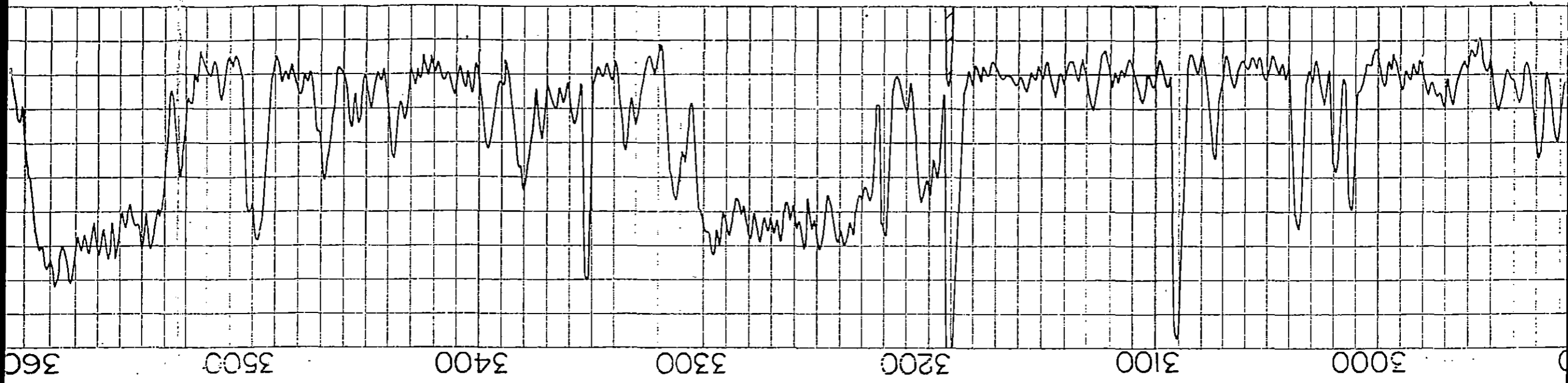




15.185.00458.0000



15.185.00458.0000



15.185.00458.0000