

TYPE

NOTICE OF INTENTION TO DRILL

C-1

TO BE FILED WITH THE STATE CORPORATION COMMISSION  
PRIOR TO COMMENCEMENT OF WELL

API Number 15-009-20,988-  
(For office use only) 00-00

1. Operator Bergman Oil Company  
Address 520 Union Center, Wichita, Kansas 67202
2. Contractor Bergman Drilling, Inc.  
Address 520 Union Center, Wichita, Kansas 67202
3. Type of Equipment: Rotary X Cable Tool \_\_\_\_\_  
4. Well to be Drilled for: Oil X Gas \_\_\_\_\_  
Disposal \_\_\_\_\_ Input \_\_\_\_\_ Other \_\_\_\_\_
5. Depth of Deepest Fresh Water within 1 mile 180 ft.  
6. Depth of Municipal Water Well within 3 miles 180 ft.  
7. Depth to Protect all Fresh Water 200 ft.  
8. Amount of Surface Casing to be set 300 ft.  
9. Alternate No. 1 \_\_\_\_\_ No. 2 X

Starting Date December 31, 1975  
County Barren  
Sec 33 Twp 16 S Rge 12 E W  
Spot Location Approx. SE SW NE  
Nearest Lease Line 1320 ft.  
Lease Name Finger  
Well No. # 4  
Est. Total Depth 3350 ft.

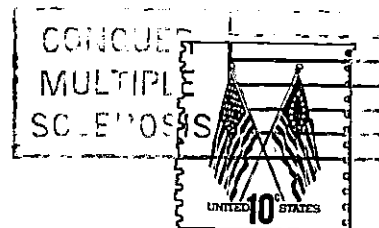
REMARKS:

OPERATOR STATES THAT HE WILL COMPLY WITH K. S. A. 55-128

Signature of Operator

Harold I. Bergman





**State Corporation Commission of Kansas**

**Conservation Division**

**P. O. Box 17027**

**Wichita, Kansas 67217**

**RECEIVED**  
STATE CORPORATION COMMISSION

**DEC 30 1975**

**CONSERVATION DIVISION**  
Wichita, Kansas

**(IF PREFERRED, MAIL IN ENVELOPE)**