

ORIGINAL

SIDE ONE

6/19/90  
RELEASED

STATE CORPORATION COMMISSION OF KANSAS  
OIL & GAS CONSERVATION DIVISION  
WELL COMPLETION OR RECOMPLETION FORM  
ACO-1 WELL HISTORY  
DESCRIPTION OF WELL AND LEASE

API NO. 15-097-21,268 - 0000 SEP. 24. 1990..

County..... Kiowa  
Approx..... FROM CONFIDENTIAL  
C N/2 N/2 Sec. 13 Twp. 28S Rge. 17 East  
..... X West

Operator: License # 6725  
Name Eric Waddell Company  
Address Box 349  
City/State/Zip Natoma, KS 67651

4800 Ft North from Southeast Corner of Section  
2570 Ft West from Southeast Corner of Section  
(Note: Locate well in section plat below)

Purchaser Farmland

Lease Name Bevans Well # 1

Operator Contact Person Eric Waddell  
Phone (913) 885-4497

Field Name N/A

Contractor: License # 5422  
Name Abercrombie Drilling, Inc.

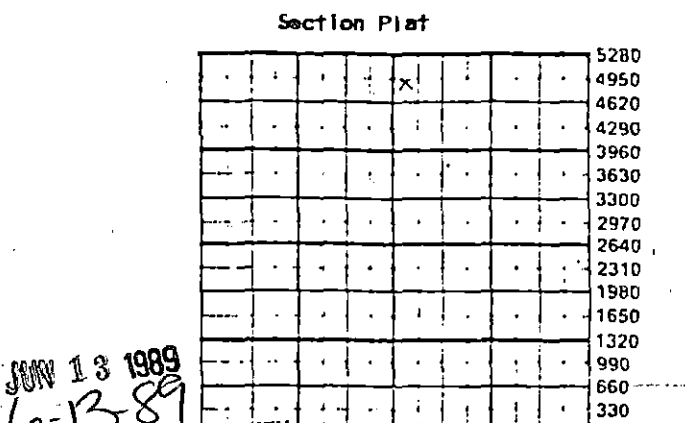
Producing Formation Mississippian

Wellsite Geologist Mona Manes  
Phone 316-945-8094

Elevation: Ground 2159' KB 2164

Designate Type of Completion  
X New Well Re-Entry Workover  
X Oil SWD Temp Abd  
Gas Inj Delayed Comp.  
Dry Other (Core, Water Supply etc.)

If OWO: old well info as follows:  
Operator  
Well Name  
Comp. Date Old Total Depth



JUN 13 1989  
6-13-89  
KANSAS GEOLOGICAL SURVEY  
WICHITA BRANCH

WATER SUPPLY INFORMATION  
Disposition of Produced Water: X Disposal  
Docket # Repressuring

WELL HISTORY  
Drilling Method: X Mud Rotary Air Rotary Cable  
2-11-89 2-19-89 2-19-89  
Spud Date Date Reached TD Completion Date  
4850! 4849  
Total Depth PBTD 325.68'  
Amount of Surface Pipe Set and Cemented at...feet  
Multiple Stage Cementing Collar Used? Yes X No  
If yes, show depth set...feet  
If alternate 2 completion, cement circulated from...feet depth to...w/...SX cmt  
Cement Company Name  
Invoice #

Questions on this portion of the ACO-1 call:  
Water Resources Board (913) 296-3717  
Source of Water:  
Division of Water Resources Permit # T89-072  
X Groundwater 4850 Ft North from Southeast Corner  
(Well) 2700 Ft West from Southeast Corner of  
Kiowa Co Sec 13 Twp 28S Rge 17 East X West  
Surface Water...Ft North from Southeast Corner  
(Stream, pond etc)...Ft West from Southeast Corner  
Sec Twp Rge East West  
Other (explain)  
(purchased from city, R.W.D. #)

INSTRUCTIONS: This form shall be completed in triplicate and filed with the Kansas Corporation Commission, 200 Colorado Derby Building, Wichita, Kansas 67202, within 120 days of the spud date of any well. Rule 82-3-130, 82-3-107 and 82-3-106 apply. Information on side two of this form will be held confidential for a period of 12 months if requested in writing and submitted with the form. See rule 82-3-107 for confidentiality in excess of 12 months. One copy of all wireline logs and drillers time log shall be attached with this form. Submit CP-4 form with all plugged wells. Submit CP-111 form with all temporarily abandoned wells.

All requirements of the statutes, rules and regulations promulgated to regulate the oil and gas industry have been fully complied with and the statements herein are complete and correct to the best of my knowledge.

Signature [Signature]  
Title Geologist Date 6-8-89

Subscribed and sworn to before me this 8 day of June 1989  
Notary Public Reva F. Musgrove  
Date Commission Expires 3-28-92

K.C.C. OFFICE USE ONLY  
Letter of Confidentiality Attached  
Wireline Log Received  
Drillers Time Log Received  
Distribution  
KCC SWD/Rep NGPA  
KGS Plug Other  
(Specify)

REVA F. MUSGROVE  
State of Kansas  
My Appt. Exp. 3-28-92

SIDE TWO

JAN 1970

Operator Name Eric Waddell Company Lease Name Bevans

RELEASED

Sec. 13 Twp. 28S Rge. 17 East West County Kiowa SEP 24 1991

WELL LOG

FROM CONFIDENTIAL

INSTRUCTIONS: Show important tops and base of formations penetrated. Detail all cores. Report all drill stem tests giving interval tested, time tool open and closed, flowing and shut-in pressures, whether shut-in pressure reached static level, hydrostatic pressures, bottom hole temperature, fluid recovery, and flow rates if gas to surface during test. Attach extra sheet if more space is needed. Attach copy of log.

Drill Stem Tests Taken [X] Yes [ ] No
Samples Sent to Geological Survey [ ] Yes [X] No
Cores Taken [ ] Yes [X] No

Formation Description [X] Log [ ] Sample

DST #1) 4740-4768, 15-45-60-45
FP:246-295/295-433#
SIP: 1236-1186#
Rec.1798feet of gas in pipe, 730' clean gassy oil, 270' formation water. GTS 17" into 1st S.I., Guaged at 398 MCF/day.

Table with 3 columns: Name, Top, Bottom. Rows include Heebner, Brown Lime, Lansing, BKC, Cherokee Sd, Viola, and From KB 2172.

CASING RECORD [ ] New [X] Used

Report all strings set-conductor, surface, intermediate, production, etc.

Table with 8 columns: Purpose of String, Size Hole Drilled, Size Casing Set (in O.D.), Weight Lbs/Ft., Setting Depth, Type of Cement, #Sacks Used, Type and Percent Additives. Rows for Surface and Production.

PERFORATION RECORD

Table with 3 columns: Shots Per Foot, Specify Footage of Each Interval Perforated, Acid, Fracture, Shot, Cement Squeeze Record (Amount and Kind of Material Used), Depth. Includes 'See additional sheet'.

TUBING RECORD: Size 2 3/8", Set At 4780, Packer at, Liner Run [ ] Yes [ ] No

Date of First Production 5-15-89, Producing Method [ ] Flowing [X] Pumping [ ] Gas Lift [ ] Other (explain)

Table with 5 columns: Oil, Gas, Water, Gas-Oil Ratio, Gravity. Row for Estimated Production Per 24 Hours.

METHOD OF COMPLETION

Production Interval

Disposition of gas: [ ] Vented [ ] Sold [X] Used on Lease
[ ] Open Hole [X] Perforation [ ] Other (Specify)
[ ] Dually Completed [ ] Commingled

4746-49
4752-55

Perforation record

4813-15	250 gallons 15%N.E.acid	N.C.
Set CIBP @ 4800		)
4762-66 4 spf (1)	500 gallons 7½%MCA w/ DS & FE & Servi-sol	)
4746-49 4spf (2)		)
4752-55 4spf (3)	Treated pfs. 1,2,3 w/ 1000 gallons of 7½%MCA containing DS FE AND Servi-sol.	
Squeezed Cher. pfs 1,2, and 3 w/ 50sxs of common 1300#.		
4746-49		
4752-55	1000 gallons 7½%MCA w/ DS & FE & Servisol	

RELEASED

SEP 24 1990

FROM CONFIDENTIAL

JUN 13 1989  
KANSAS GEOLOGICAL SURVEY  
WICHITA BRANCH

RECEIVED  
STATE CORPORATION COMMISSION

JUN 19 1989

CONSERVATION DIVISION  
Wichita, Kansas