

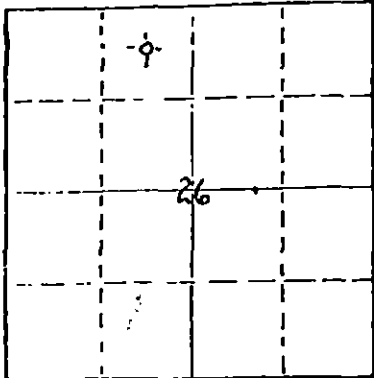
STATE OF KANSAS
STATE CORPORATION COMMISSION

WELL PLUGGING RECORD

Give All Information Completely
Make Required Affidavit
Mail or Deliver Report to
Conservation Division
State Corporation Comm.
245 North Water
Wichita, KS 67202

Stafford County, Sec. 26 Twp. 21S Rge. 13W KWK
Location as "NE/CNW $\frac{1}{4}$ SW $\frac{1}{4}$ " or footage from lines _____

C NE NW
Lease Owner Eldon J. Schierling
Lease Name Leo J Well No. 1
Office Address 830 Sutton Place, Wichita, Ks. 67202
Character of Well (Completed as Oil, Gas or Dry Hole) _____



Locate well correctly on above
Section Plot

Date Well completed August 10 1980
Application for plugging filed August 10 1980
Application for plugging approved August 10 1980
Plugging commenced August 10 1980
Plugging completed August 10 1980
Reason for abandonment of well or producing formation _____

If a producing well is abandoned, date of last production 19____

Was permission obtained from the Conservation Division or its agents before plugging was commenced? yes

Name of Conservation Agent who supervised plugging of this well Bill Owens, Pratt, KS
Producing formation _____ Depth to top _____ Bottom _____ Total Depth of Well 3711
Show depth and thickness of all water, oil and gas formations.

OIL, GAS OR WATER RECORDS

CASING RECORD

FORMATION	CONTENT	FROM	TO	SIZE	PUT IN	PULLED OUT

Describe in detail the manner in which the well was plugged, indicating where the mud fluid was placed and the method or methods used in introducing it into the hold. If cement or other plugs were used, state the character of same and depth placed, from _____ feet to _____ feet for each plug set.

Plugged as follows:

50 sx @ 400'

10 sx @ 40'

5 sx in rathole, 2 sx water well; job completed @ 9:00 a.m. 8-10-80

by Sun Cementing

State Plugger - Bill Owens, Pratt, Kansas

Bill Roach, Sterling, Kansas

RECEIVED
STATE CORPORATION COMMISSION
SEP - 8 1980
CONSERVATION DIVISION
Wichita, Kansas

(If additional description is necessary, use BACK of this sheet)

Name of Plugging Contractor Husky Drilling Co., Inc.

STATE OF KANSAS COUNTY OF SEDGWICK
Jon T. Williams, Jr. (employee of owner) or (owner or operator)

of the above-described well, being first duly sworn on oath, says: That I have knowledge of the facts, statements, and matters herein contained and the log of the above-described well as filed and that the same are true and correct. So help me, God.

(Signature) _____

200 E. First, Suite 500, Wichita, ks
(Address) _____ 67202

SUBSCRIBED AND SWORN TO before me this 11 day of August, 1980

Vickie O. Burris Notary Public.

My commission expires March 20, 1982



200 E. First, Suite 500
~~800 CHERRY RIDGE~~
 Wichita, Kansas 67202
 Phone 316 - 263-7904
 Mobile Phone 316 - 793-7859 Unit 7070

August 11, 1980

Well Log-----Leo J No. 1
 Located: C NE NW of Sec. 26-21-13W, Stafford Co., Kansas

OWNER: E. J. Schierling
 ROTARY CONTRACTOR: Husky Drilling Co., Inc.

COMMENCED: August 04, 1980
 COMPLETED: August 10, 1980

Rotary Total Depth: 3711'

LOG

0 - 130	Sand
130 - 415	Shale & sand
415 - 730	Redbed - shale & sand
730 - 750	Anhydrite
750 - 850	Shale - shells
850 - 1450	Redbed - shale
1450 - 1720	Shale - lime, shells
1720 - 2036	Shale & lime
2036 - 2365	Shale & lime
2365 - 2675	Lime, shale bricks
2675 - 2958	Lime & Shale
2958 - 3185	Shale, lime
3185 - 3360	Lime & Shale bricks
3360 - 3595	Lime
3595 - 3686	Lime & Shale
3686 - 3711	Arbuckle

CASING RECORD

Ran 10 jts., 20# 8-5/8" csg,
 tallied 402.80' set at 409 KB 2/325
 sx 60/40 pozmix 2% gel, 3% cc, plug
 down @ 8:00p.m. 8-04-80 Sun Cementing.

RECEIVED
 STATE CORPORATION COMMISSION
 SEP - 8 1980
 CONSERVATION DIVISION
 Wichita, Kansas

Plugged and abandoned 8-10-80.

KANSAS

WELL COMPLETION REPORT AND
DRILLER'S LOG - 185 -

API No. 15 - STAFFORD - 21098
County Number

S. 26 T. 21^S R. 13 W

Loc. C. NENW

County STAFFORD

Operator ELDON J. SCHIERLING

Address 830 SUTTON PLACE

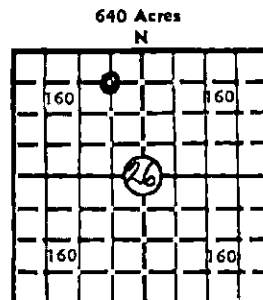
Well No. 1 Lease Name LEO J.

Footage Location
660 feet from (N) line 660 feet from (E) line

Principal Contractor HUSKY DRILG. CO. Geologist ELDON J. SCHIERLING

Spud Date AUG 5-1980 Date Completed AUG 10-1980 Total Depth 3711 P.B.T.D.

Directional Deviation Oil and/or Gas Purchaser
DRY & ABANDONED



Locate well correctly

Elev.: Gr. 1868

DF 1870 KB 1873

CASING RECORD

Report of all strings set—surface, intermediate, production, etc.

Purpose of string	Size hole drilled	Size casing set (in O.D.)	Weight lbs/ft.	Setting depth	Type cement	Sacks	Type and percent additives
<u>SURFACE</u>	<u>12 1/4</u>	<u>8 5/8</u>	<u>20#</u>	<u>409'</u>	<u>Com 401</u>	<u>325</u>	<u>2% Gel</u> <u>3% CaCl</u>

LINER RECORD

PERFORATION RECORD

Top, ft.	Bottom, ft.	Sacks cement	Shots per ft.	Size & type	Depth interval

TUBING RECORD

Size	Setting depth	Packer set at

ACID, FRACTURE, SHOT, CEMENT SQUEEZE RECORD

Amount and kind of material used	Depth interval treated

INITIAL PRODUCTION

Date of first production		Producing method (flowing, pumping, gas lift, etc.)			
RATE OF PRODUCTION PER 24 HOURS	Oil	Gas	Water	Gas-oil ratio	
	bbls.	MCF	bbls.	CFPB	
Disposition of gas (vented, used on lease or sold)			Producing interval(s)		

RECEIVED
STATE CORPORATION COMMISSION
SEP - 5 1980
CONSERVATION DIVISION
Wichita, Kansas

INSTRUCTIONS: As provided in KCC Rule 82-2-125, within 90 days after completion of a well, one completed copy of this Drillers Log shall be transmitted to the State Geological Survey of Kansas, 4150 Monroe Street, Wichita, Kansas 67209. Copies of this form are available from the Conservation Division, State Corporation Commission, 245 No. Water, Wichita, Kansas 67202. Phone AC 316-522-2206. If confidential custody is desired, please note Rule 82-2-125. Drillers Logs will be on open file in the Oil and Gas Division, State Geological Survey of Kansas, Lawrence, Kansas 66044.

Operator ELDON J. SCHIERLING DESIGNATE TYPE OF COMP.: OIL, GAS, DRY HOLE, SWDW, ETC.:

Well No. 1 Lease Name LEO J.

S 26 T 21 S R 13 W

WELL LOG

Show all important zones of porosity and contents thereof; cored intervals, and all drill-stem tests, including depth interval tested, cushion used, time tool open, flowing and shut-in pressures, and recoveries.

SHOW GEOLOGICAL MARKERS, LOGS RUN, OR OTHER DESCRIPTIVE INFORMATION.

FORMATION DESCRIPTION, CONTENTS, ETC.	TOP	BOTTOM	NAME	DEPTH
HEEBNER	3179			
BROWN LIME	3303			
LANSING	3321			
B/KANSAS CITY	3545			
VIOLA	3574			
SIMPSON SHALE	3618			
ARBUCKLE	3675			
RTD	3711			

USE ADDITIONAL SHEETS, IF NECESSARY, TO COMPLETE WELL RECORD.

Date Received _____

Eldon J. Schierling
Signature

Operator
Title

Aug 25 - 1980
Date