

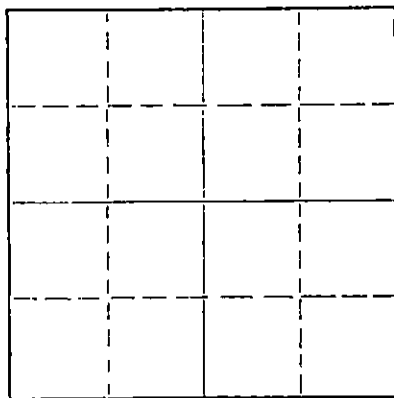
STATE OF KANSAS
STATE CORPORATION COMMISSION

Form CP-4

Give All Information Completely
Make Required Affidavit
Mail or Deliver Report to:
Conservation Division
State Corporation Commission
212 No. Market
Wichita, Kansas 67202

WELL PLUGGING RECORD

NORTH



Locate well correctly on above
Section Plat

Pawnee County, Sec. 29 Twp. 20S Rge. (E) 20(W)
Location as "NE/CNW/SW" or footage from lines C NW SW
Lease Owner Lario Oil & Gas Co.
Lease Name Steffen Well No. 6
Office Address 301 South Market, Wichita, Kansas 67202
Character of Well (completed as Oil, Gas or Dry Hole) Dry Hole
Date well completed January 30, 19 72
Application for plugging filed 19
Application for plugging approved 19
Plugging commenced January 30, 19 72
Plugging completed January 30, 19 72
Reason for abandonment of well or producing formation Dry Hole

If a producing well is abandoned, date of last production 19
Was permission obtained from the Conservation Division or its agents before plugging was commenced? Yes (Leo Massey of Hays)

Name of Conservation Agent who supervised plugging of this well
Producing formation Depth to top Bottom Total Depth of Well 4353 Feet
Show depth and thickness of all water, oil and gas formations.

OIL, GAS OR WATER RECORDS

CASING RECORD

| FORMATION | CONTENT | FROM | TO | SIZE | PUT IN | PULLED OUT |
|-----------|---------|------|------|--------|--------|------------|
| | Surface | 0 | 463' | 8-5/8" | 463' | None |
| | Casing | | | | | |
| | | | | | | |
| | | | | | | |
| | | | | | | |
| | | | | | | |
| | | | | | | |

Describe in detail the manner in which the well was plugged, indicating where the mud fluid was placed and the method or methods used in introducing it into the hole. If cement or other plugs were used, state the character of same and depth placed, from feet to feet for each plug set.

Heavy Mud from Total Depth to 600 Feet,
50 sax Cement; Mud to 360 Feet, 25 sax
Cement; Mud to 40 Feet, 1/2 sax Hulls,
Plug Bridged and 10 sax Cement to Base
of Cellar; 2 sax Cement in Rat Hole.
Job Completed @ 1:30 A.M.

RECEIVED
STATE CORPORATION COMMISSION
FF07 1972
CONSERVATION DIVISION
Wichita, Kansas

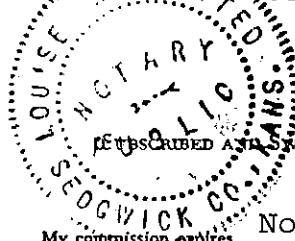
(If additional description is necessary, use BACK of this sheet)

Name of Plugging Contractor HOWCO
Address Box 579, Great Bend, Kansas

STATE OF KANSAS, COUNTY OF SEDGWICK, ss.
Clarence Michael of Sage Drilling Co (employee of owner) and (name of operator) of the above described well, being first duly sworn on oath, says: That I have knowledge of the facts, statements, and matters herein contained and the log of the above-described well as filed and that the same are true and correct. So help me God.

(Signature) Clarence Michael
500 Bitting Building, Wichita, Kansas
(Address)

Subscribed and sworn to before me this 1st day of February, 1972
November 26, 1974.
Louise K. Whitted, Notary Public.



15.145-20244.0000

RECEIVED
STATE CORPORATION COMMISSION

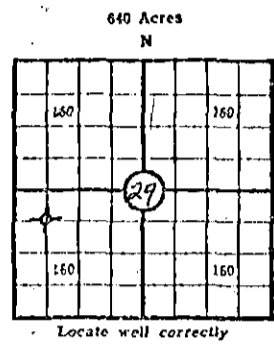
FEB 4 1972

CONSERVATION DIVISION

KANSAS CORPORATION COMMISSION Wichita, Kansas

WELL RECORD

(Mail to Kansas Geological Survey, 4150 Monroe Street, Wichita, Kansas 67209)



Lease Name: Steffen Well No. 6
 Well Located: NW SW
SEC 29 TWP 20 RGE 20W
 Operator: Lario Oil & Gas Company
 Address: 301 S. Market, Wichita, Kansas 67202
 Elevation: Ground 2152 D.F. 2155 K.B. 2157
 Type Well: (Oil, gas, dry hole) Dry Hole

Drilling Commenced: Jan. 20 19 72 Drilling Completed: Jan. 29 19 72
 Well Completed: Jan. 30 19 72 Total Depth _____
 Initial Production: Dry

Casing Record

Size: 8 5/8 Set at 463' Size: _____ Set at _____
 Size: _____ Set at _____ Size: _____ Set at _____

Liner Record

Size: _____ Set from _____ To _____

Cementing

| <u>Casing Size</u> | <u>Sacks</u> | <u>Type Cement and Additives</u> |
|--------------------|--------------|----------------------------------|
| <u>8 5/8"</u> | <u>300</u> | <u>Common w 3% CC</u> |
| _____ | _____ | _____ |
| _____ | _____ | _____ |

Perforations

| <u>Formation</u> | <u>Perforated Interval and Number Shots</u> |
|------------------|---|
| _____ | _____ |
| _____ | _____ |
| _____ | _____ |

Electric Log Run (Show type log and depths covered)

(Fill in formation and related information on reverse side)

FORMATION, TESTING AND COMPLETION RECORD

Show Drill Stem Tests,
Well Stimulation and
Production Tests

| Formation | Top | Bottom | |
|-----------------|------|--------|---|
| Surface | 0 | 23 | |
| Sand | 23 | 42 | |
| Shale & Shells | 42 | 340 | |
| Shale & Lime | 340 | 464 | |
| Shale & Red Bed | 464 | 765 | |
| Sand | 765 | 1015 | |
| Shale | 1015 | 1137 | |
| Shale & Shells | 1137 | 1337 | |
| Anhydrite | 1337 | 1365 | |
| Shale | 1365 | 2030 | |
| Lime & Shale | 2030 | 3760 | |
| Lime | 3760 | 4010 | |
| Lime & Shale | 4010 | 4087 | |
| Lime | 4087 | 4300 | DST #1 - 4290-4317', Rec. 30' mud, slightly |
| Chert & Lime | 4300 | 4317 | oil cut and 120' gas in pipe. |
| Miss. Chat | 4317 | 4327 | |
| Chat | 4327 | 4332 | DST #2 - 4316-4327', Rec. 60' clean black |
| Chert | 4332 | 4353 | oil and 70' watery mud |

DRILLERS LOG

STEFFEN NO. 6

| | | | |
|------------------|-------------|---------------------|-----------------|
| CASING RECORD: | OPERATOR: | Lario Oil & Gas Co. | DESCRIPTION: |
| 8-5/8" @ 463' | CONTRACTOR: | Sage Drilling Co. | C NW SW |
| w/300 sax cement | COMMENCED: | January 20, 1972 | Sec. 29-20S-20W |
| TOTAL DEPTH: | COMPLETED: | January 30, 1972 | Pawnee County, |
| 4353' | | | Kansas |

| <u>FORMATION</u> | <u>FROM</u> | <u>TO</u> | <u>REMARKS</u> |
|------------------|-------------|-----------|----------------|
| Shale | 0 | 23 | |
| Sand | 23 | 42 | |
| Shale | 42 | 432 | |
| Lime & Shale | 432 | 464 | |
| Shale & Red Bed | 464 | 765 | |
| Sand | 765 | 1015 | |
| Shale | 1015 | 1137 | |
| Shale & Shells | 1137 | 1337 | |
| Anhydrite | 1337 | 1365 | |
| Shale | 1365 | 2030 | |
| Shale & Lime | 2030 | 2243 | |
| Lime & Shale | 2243 | 3760 | |
| Lime | 3760 | 4010 | |
| Lime & Shale | 4010 | 4087 | |
| Lime | 4087 | 4300 | |
| Chert & Lime | 4300 | 4317 | |
| Chert | 4317 | 4353 | D&A |

RECEIVED
STATE CORPORATION COMMISSION
FEB 7 1972
CONSERVATION DIVISION
Wichita, Kansas

I certify that this is a true and correct copy of the above log to the best of my knowledge.

SAGE DRILLING CO., INC.

By Clarence Michael
Clarence Michael



Subscribed and sworn to before me this 1st day of February, 1972.

Louise K. Whitted
Louise K. Whitted, Notary Public

My commission expires:
November 26, 1974.