

WELL PLUGGING RECORD

Give All Information Completely  
Make Required Affidavit  
Mail or Deliver Report to:  
Conservation Division  
State Corporation Commission  
800 Bitting Building  
Wichita, Kansas

Stafford

County. Sec. 28 Twp. 21S Rge. (E) 11 (W)

Location as "NE/CNWxSWx" or footage from lines Center of SW/4, SE/4, NW/4

Lease Owner Amerada Petroleum Corp.

Lease Name Frank H. Chesky Well No. 1

Office Address Box 2040, Tulsa, Okla.

Character of Well (completed as Oil, Gas or Dry Hole) Dry Hole

Date well completed August 20, 19 53

Application for plugging filed August 20, 19 53

Application for plugging approved August 20, 19 53

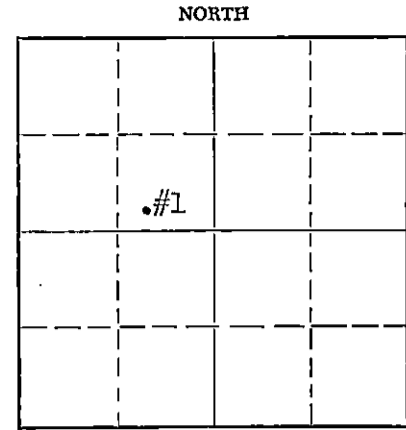
Plugging commenced August 20, 19 53

Plugging completed August 20, 19 53

Reason for abandonment of well or producing formation \_\_\_\_\_

If a producing well is abandoned, date of last production \_\_\_\_\_ 19 \_\_\_\_\_

Was permission obtained from the Conservation Division or its agents before plugging was commenced? Yes



Locate well correctly on above Section Plat

Name of Conservation Agent who supervised plugging of this well Mr. M. A. Rives - Pratt, Kansas.

Producing formation \_\_\_\_\_ Depth to top \_\_\_\_\_ Bottom \_\_\_\_\_ Total Depth of Well 3518' Feet

Show depth and thickness of all water, oil and gas formations.

OIL, GAS OR WATER RECORDS

CASING RECORD

FORMATION	CONTENT	FROM	TO	SIZE	PUT IN	PULLED OUT
				8-5/8"	240'	None.

Describe in detail the manner in which the well was plugged, indicating where the mud fluid was placed and the method or methods used in introducing it into the hole. If cement or other plugs were used, state the character of same and depth placed, from \_\_\_\_\_ feet to \_\_\_\_\_ feet for each plug set.

Filled hole with heavy mud up to within 200' of top, set bridge plug at 200', spotted 20 sacks of regular cement through drill pipe, filled hole with heavy mud up to within 40' of top, set bridge plug at 40' & dumped in 10 sacks of regular cement filling hole to top of 8-5/8" OD surface casing in bottom of cellar. Well plugged & abandoned 8/20/53 as required by State Plugger Mr. M. A. Rives of Pratt, Kansas.

(If additional description is necessary, use BACK of this sheet)

Name of Plugging Contractor Barbour Drilling Co.

Address Tulsa, Okla.

STATE OF Oklahoma COUNTY OF Tulsa, ss. R. A. Drake (employee of owner) or (owner or operator) of the above-described

well, being first duly sworn on oath, says: That I have knowledge of the facts, statements, and matters herein contained and the log of the above-described well as filed and that the same are true and correct. So help me God.

(Signature) R. A. Drake

SUBSCRIBED AND SWORN TO before me this 24<sup>th</sup> day of August, 1953

My commission expires January 17, 1955 R. W. Moore Notary Public.

WELL LOG

Well No. 1  
 Farm Frank H. Chesky  
 Elevation 1739' D.F.  
 Location Center SW/4 SE/4 NW/4  
 1650' East of West line  
 330' North of South line of NW/4  
 Section 28-21S-11W  
 Stafford County, Kansas  
 Company Amerada Petroleum Corporation  
 Commenced Drlg. August 7, 1953  
 Completed Drlg. August 20, 1953  
 Contractor Barbour Drilling Company  
 Initial Production Dry Hole

CASING RECORD:	SIZE	WEIGHT	FEET	CEMENT	PERFORATIONS
	8-5/8"	28#	240'	200 Sx	None

FORMATION:

Sand & Red Bed	0	115
Red Bed	115	241
Red Bed & Sand	241	470
Anhydrite	470	500
Shale	500	1475
Lime & Shale	1475	1675
Lime	1675	1815
Lime & Shale	1815	1985
Shale	1985	2480
Lime & Shale	2480	2775
Lime	2775	2889
Lime & Shale	2889	2980
Lime	2980	3050
Lime & Shale	3050	3125
Lime	3125	3401
Conglomerate & Chert	3401	3417
Lime	3417	3435
Conglomerate Lime	3435	3518

TOTAL DEPTH 3518'

GEOLOGICAL TOPS:

Heebner	2953'
Toronto	2973'
Brown Lime	3086'
Lansing	3107'
Conglomerate	3372'

SCHLUMBERGER TOPS:

Heebner	2956'
Toronto	2972'
Brown Lime	3090'
Lansing	3110'
Conglomerate	3370'

Rotary tools used from 0 3518'

RECEIVED  
 CONSERVATION DIVISION  
 Wichita, Kansas

**PLUGGING**  
 FILE SEC 28 T 21 S 11W  
 ROCK PAGE 123 LINE 16