

STATE CORPORATION COMMISSION OF KANSAS
OIL & GAS CONSERVATION DIVISION
WELL COMPLETION FORM
ACO-1 WELL HISTORY
DESCRIPTION OF WELL AND LEASE

API NO. 15-009-24564-00 ORIGINAL

County Barton

-SE - NE - NE Sec. 16 Twp. 16 Rge. 12 X W

1090 Feet from SW (circle one) Line of Section

330 Feet from E/W (circle one) Line of Section

Footages Calculated from Nearest Outside Section Corner:
SE, NW or SW (circle one)

Lease Name WEBER Well # 1

Field Name _____

Producing Formation ARBUCKLE

Elevation: Ground 1876 KB 1880

Total Depth 3321' PBSD _____

Amount of Surface Pipe Set and Cemented at 800 Feet

Multiple Stage Cementing Collar Used? Yes No

If yes, show depth set _____ Feet

If Alternate II completion, cement circulated from _____

feet depth to _____ w/ _____ sx cmt.

Drilling Fluid Management Plan ALT 1 9/11 1-7-97
(Data must be collected from the Reserve Pit)

Chloride content 14,000 ppm Fluid volume 560 bbls

Dewatering method used Evaporate

Location of fluid disposal if hauled offsite: _____

Operator Name _____

Lease Name _____ License No. _____

Quarter _____ Sec. _____ Twp. _____ S Rng. _____ E/W _____

County _____ Docket No. _____

Operator: License # 31120

Name: PELICAN HILL OIL AND GAS, INC.

Address 2139 Avenida Espada

San Clemente, CA 92672

City/State/Zip _____

Purchaser: Koch Oil

Operator Contact Person: Al Gross

Phone (714) 498-2101

Contractor: Name: ALLEN DRILLING COMPANY

License: 5418

Wellsite Geologist: Randy Kilian

Designate Type of Completion
 New Well Re-Entry Workover

Oil SWD SIOW Temp. Abd.
 Gas ENHR SIGV
 Dry Other (Core, WSW, Expl., Cathodic, etc)

If Workover/Re-Entry: old well info as follows:

Operator: N/A

Well Name: _____

Comp. Date _____ Old Total Depth _____

Deepening Re-perf. Conv. to Inj/SWD
 Plug Back _____ PBSD
 Commingled _____ Docket No. _____
 Dual Completion _____ Docket No. _____
 Other (SWD or Inj?) _____ Docket No. _____

9/14/93 9/19/93 9-24-93
Spud Date Date Reached TD Completion Date

INSTRUCTIONS: An original and two copies of this form shall be filed with the Kansas Corporation Commission, 200 Colorado Derby Building, Wichita, Kansas 67202, within 120 days of the spud date, recompletion, workover or conversion of a well. Rule 82-3-130, 82-3-106 and 82-3-107 apply. Information on side two of this form will be held confidential for a period of 12 months if requested in writing and submitted with the form (see rule 82-3-107 for confidentiality in excess of 12 months). One copy of all wireline logs and geologist well report shall be attached with this form. ALL CEMENTING TICKETS MUST BE ATTACHED. Submit CP-4 form with all plugged wells. Submit CP-111 form with all temporarily abandoned wells.

Requirements of the statutes, rules and regulations promulgated to regulate the oil and gas industry have been fully complied and the statements herein are complete and correct to the best of my knowledge.

Signature Allen Leon
President

Date 11/4/96 RECEIVED
KANSAS CORPORATION COMMISSION

Subscribed and sworn to before me this 4 day of NOV

by Public Diana Novakoff

Commission Expires 12-06-96

K.C.C. OFFICE USE ONLY
Letter of Confidentiality Attached
Wireline Log Received
Geologist Report Received
Distribution
_____ SWD/Rep _____ NGPA
_____ Plug _____ Other (Specify)
KCC
KGS
NOV 06 1996
11-06-96
CONSERVATION DIVISION
WICHITA, KS

CSC
NOTARY PUBLIC-CALIFORNIA
ORANGE COUNTY
MY COMMISSION EXPIRES
DECEMBER 6, 1996
DINA NOVAKOFF
COMMISSION #989076

Operator Name PELICAN HILL OIL & GAS, INC Lease Name WEBER Well # 1

Sec. 16 Twp. 16 Rge. 12 East West
 County Barton

INSTRUCTIONS: Show important tops and base of formations penetrated. Detail all cores. Report all drill stem tests giving interval tested, time tool open and closed, flowing and shut-in pressures, whether shut-in pressure reached static level, hydrostatic pressures, bottom hole temperature, fluid recovery, and flow rates if gas to surface during test. Attach extra sheet if more space is needed. Attach copy of log.

Drill Stem Tests Taken (Attach Additional Sheets.)	<input checked="" type="checkbox"/> Yes <input type="checkbox"/> No	<input type="checkbox"/> Log	Formation (Top), Depth and Datum	<input checked="" type="checkbox"/> Sample
Samples Sent to Geological Survey	<input checked="" type="checkbox"/> Yes <input type="checkbox"/> No	Name	Top	Datum
Cores Taken	<input type="checkbox"/> Yes <input checked="" type="checkbox"/> No	SEE ATTACHED		
Electric Log Run (Submit Copy.)	<input checked="" type="checkbox"/> Yes <input type="checkbox"/> No	ANHYDRITE	789'	+1091'
List All E.Logs Run: <u>RADIATION GUARD</u>		BASE ANHYDRITE	814'	+1066'
		TOPEKA	2673'	-793'
		HEEBNER	2953'	-1078'
		TORONTO	2973'	-1093'
		BROWN LIME	3043'	-1163'
		LANSING	3061'	-1181'
		BASE KC	3303'	-1423'
		ARBUCKLE	3317'	-1437'

CASING RECORD <input type="checkbox"/> New <input checked="" type="checkbox"/> Used							
Report all strings set-conductor, surface, intermediate, production, etc.							
Purpose of String	Size Hole Drilled	Size Casing Set (In O.D.)	Weight Lbs./Ft.	Setting Depth	Type of Cement	# Sacks Used	Type and Percent Additives
Surface	12-1/4"	8-5/8"	25#	800'	40/60poz	300	2%gel 3%cc
Production	7-7/8"	5-1/2"	15#	3315'	ASC	150	

ADDITIONAL CEMENTING/SQUEEZE RECORD				
Purpose:	Depth Top Bottom	Type of Cement	#Sacks Used	Type and Percent Additives
<input type="checkbox"/> Perforate				
<input type="checkbox"/> Protect Casing				
<input type="checkbox"/> Plug Back TD				
<input type="checkbox"/> Plug Off Zone				

Shots Per Foot	PERFORATION RECORD - Bridge Plugs Set/Type	Acid, Fracture, Shot, Cement Squeeze Record
	Specify Footage of Each Interval Perforated	(Amount and Kind of Material Used) Depth
	3315'-3321' OPEN HOLE	

TUBING RECORD	Size <u>2 7/8</u>	Set At <u>3300'</u>	Packer At	Liner Run <input type="checkbox"/> Yes <input checked="" type="checkbox"/> No
Date of First, Resumed Production, SWD or Inj.]	<u>9/93</u>	Producing Method	<input type="checkbox"/> Flowing <input checked="" type="checkbox"/> Pumping <input type="checkbox"/> Gas Lift <input type="checkbox"/> Other (Explain)	
Estimated Production Per 24 Hours	Oil <u>40</u> Bbls.	Gas <u>0</u> Mcf	Water <u>20</u> Bbls.	Gas-Oil Ratio Gravity

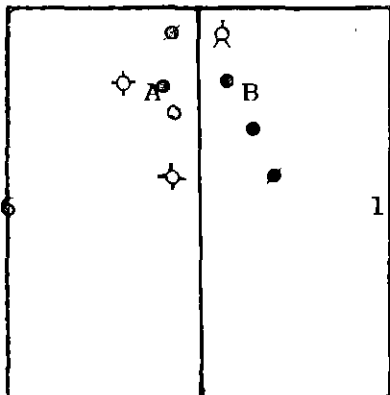
Disposition of Gas:	<input type="checkbox"/> Vented <input type="checkbox"/> Sold <input type="checkbox"/> Used on Lease (If vented, submit ACO-18.)	METHOD OF COMPLETION	Production Interval
		<input checked="" type="checkbox"/> Open Hole <input type="checkbox"/> Perf. <input type="checkbox"/> Dually Comp. <input type="checkbox"/> Commingled <input type="checkbox"/> Other (Specify)	<u>3315'-3321'</u>

ORIGINAL

FORMATION TOPS & STRUCTURAL GEOLOGY

R.12 W.

T. 16
S. 16



REFERRED TO:

- A: Pelican Hill Oil & Gas, Inc. Weber #1
74' W & 100' S of SE NE NE 16
- B: WEBCO Oil Co., Inc. #1B Kramer-Weber
SW NW NW 15
- C: _____
- D: _____
- E: _____

STRATIGRAPHIC MARKERS	SUBJECT WELL		STRUCTURAL POSITION					
	SAMPLE	E. LOG	DATUM	A	B	C	D	E
Anhydrite	789'		+1091	+1094	+1087			
Base	814'		+1066	+1069	+1062			
Topeka	2673'		- 793	- 790	- 792			
Heeb. Sh.	2953'		-1073	-1071	-1072			
Toronto	2973'		-1093	-1088	-1090			
Doug. Sh.	2985'		-1105	-1100	-1101			
Brown Lime	3043'		-1163	-1160	-1161			
Lansing	3061'		-1181	-1177	-1177			
Base KC.	3303'		-1423	-1418	-1420			
Arbuckle	3317'		-1437	-1433	-1441			
T.D.	3321'		-1441	-1440	-1446			

* Note Pipe strap was .12' off.

RECEIVED
KANSAS CORPORATION COMMISSION

NOV 06 1996

CONSERVATION DIVISION
WICHITA, KS

*Structural position of subject well as compared to referred well.

TRILOBITE TESTING, L.L.C. ORIGINAL

P.O. Box 362 • Hays, Kansas 67601

Drill-Stem Test Data 15-009-24564

Well Name WEBER #1 Test No. 1 Date 9/18/93
 Company PELICAN HILL OIL & GAS Zone LKC "B-C"
 Address 2139 AVENIDA ESPADA SAN CLEMENTE CA 92672 Elevation 1880 KB
 Co. Rep./Geo. RANDY KILIAN Cont. ALLEN RIG #3 Est. Ft. of Pay _____
 Location: Sec. 16 Twp. 16S Rge. 12W Co. BARTON State KS

Interval Tested 3049-3090 Drill Pipe Size 4.5" XH
 Anchor Length 41 Wt. Pipe I.D. - 2.7 Ft. Run _____
 Top Packer Depth 3044 Drill Collar - 2.25 Ft. Run _____
 Bottom Packer Depth 3049 Mud Wt. 9 lb/Gal.
 Total Depth 3090 Viscosity 44 Filtrate 11

Tool Open @ 11:32 AM Initial Blow STRONG BLOW-BOTTOM OF BUCKET IN 30 SECONDS

Final Blow STRONG-BOTTOM OF BUCKET IN 30 SECONDS
1/2" BLOW ON SHUTIN

JUL 11 1996

Recovery - Total Feet 1200/360 GIP Flush Tool? NO

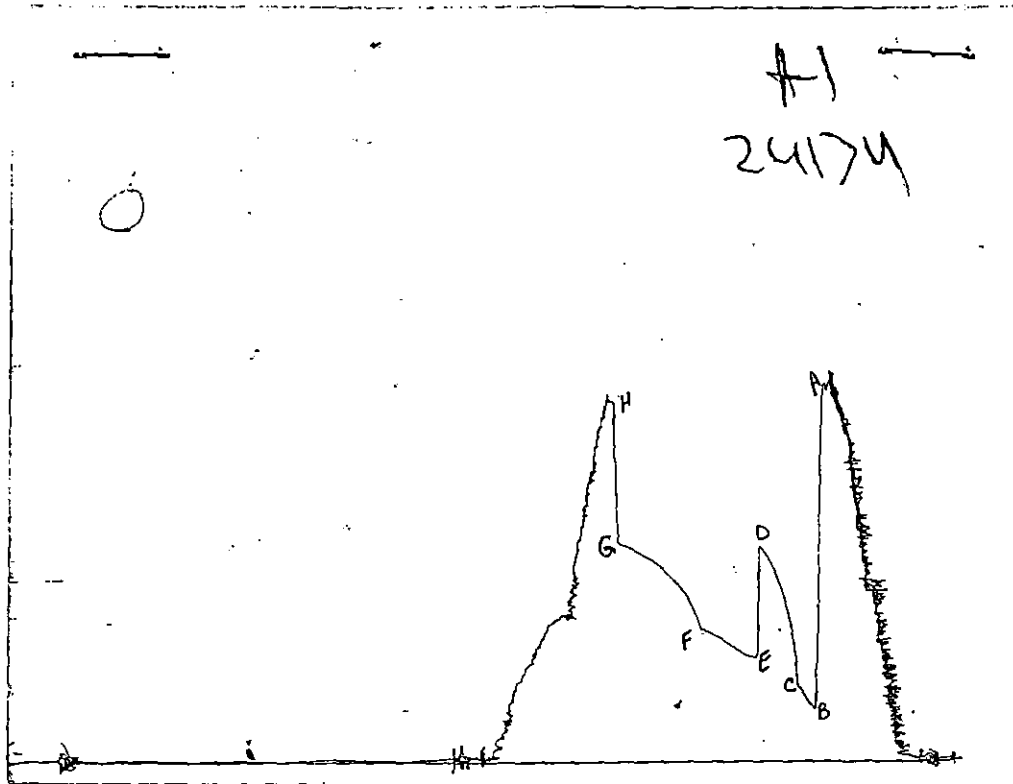
Rec. 60 Feet of GSY OIL & WTR CUT MUD-15%GAS/10%OIL/45%WTR/30%MUD
 Rec. 60 Feet of GSY OIL & WTR CUT MUD-20%GAS/20%OIL/30%WTR/30%MUD
 Rec. 120 Feet of GSY SLTLY OIL & WTR CUT MUD-10%GAS/5%OIL/20%WTR/65%MUD
 Rec. 600 Feet of GSY SLTLY OIL & MUD CUT WTR-10%GAS/5%OIL/50%WTR/35%MUD
 Rec. 360 Feet of SALT WATER

BHT 115 °F Gravity _____ °API @ _____ °F Corrected Gravity _____ °API
 RW 0.13 @ 80 °F Chlorides 53000 ppm Recovery Chlorides 6000 ppm System

(A) Initial Hydrostatic Mud 1470.3 PSI AK1 Recorder No. 22150 Range 3925
 (B) First Initial Flow Pressure 211.9 PSI @ (depth) 3052 w / Clock No. 22992
 (C) First Final Flow Pressure 295.7 PSI AK1 Recorder No. 24174 Range 3050
 (D) Initial Shut-in Pressure 861.2 PSI @ (depth) 3087 w / Clock No. 30401
 (E) Second Initial Flow Pressure 417.6 PSI AK1 Recorder No. _____ Range _____
 (F) Second Final Flow Pressure 525.8 PSI @ (depth) _____ w / Clock No. _____
 (G) Final Shut-in Pressure 866.6 PSI Initial Opening 15 Final Flow 45
 (H) Final Hydrostatic Mud 1420.7 PSI Initial Shut-in 30 Final Shut-in 60

Our Representative PAUL SIMPSON

CHART PAGE

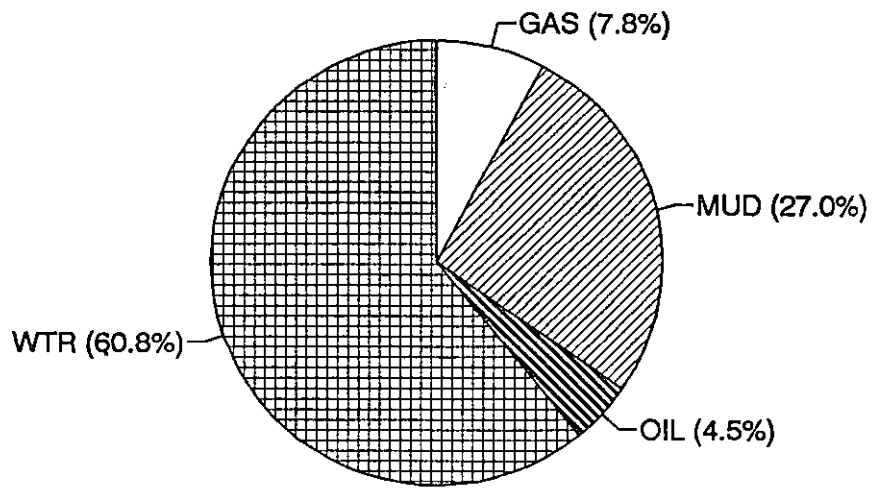


This is an actual photograph of recorder chart

	FIELD READING	OFFICE READING
(A) INITIAL HYDROSTATIC MUD	1477	1470.3
(B) FIRST INITIAL FLOW PRESSURE	210	211.9
(C) FIRST FINAL FLOW PRESSURE	301	295.7
(D) INITIAL CLOSED-IN PRESSURE	858	861.2
(E) SECOND INITIAL FLOW PRESSURE	415	417.6
(F) SECOND FINAL FLOW PRESSURE	522	525.8
(G) FINAL CLOSED-IN PRESSURE	865	866.6
(H) FINAL HYDROSTATIC MUD	1416	1420.7

DST #	CALCULATED RECOVERY ANALYSIS					DRILL	PIPE		
	1	TICKET					6139		
SAMPLE #	TOTAL FEET	GAS %	FEET	OIL %	FEET	WATER %	FEET	MUD %	FEET
1	60	15	9	10	6	45	27	30	18
2	60	20	12	20	12	30	18	30	18
3	120	10	12	5	6	20	24	65	78
4	600	10	60	5	30	50	300	35	210
5	360	0	0	0	0	100	360	0	0
TOTAL	1200	7.75	93	4.5	54	60.75	729	27	324

		HRS	BBL/DAY
BBL OIL=	0.76788	*	1 18.429
BBL WATER=	10.36638	*	248.79
BBL MUD=	4.60728		
BBL GAS	1.32246		



TRILOBITE TESTING L.L.C.

P.O. Box 362 • Hays, Kansas 67601

Test Ticket

NE 6139

Well Name & No. <u>Weber A1</u>	Test No. <u>1</u>	Date <u>9-18-93</u>
Company <u>Pelican Hill Oil & Gas</u>	Zone Tested <u>LK B-C</u>	
Address <u>2139 Avenida Espada San Clemente Ca 92672</u>	Elevation <u>1880</u>	
Co. Rep./Geo. <u>Randy Kilian</u>	cont. <u>Allen A3</u>	Est. Ft. of Pay _____
Location: Sec. <u>16</u>	Twp. <u>16s</u>	Rge. <u>12w</u> co. <u>Russell</u> State <u>Ks</u>
No. of Copies <u>6</u>	Distribution Sheet _____	Yes _____ No _____ Turnkey _____ Yes _____ No _____ Evaluation _____

Interval Tested <u>3049-3090</u>	Drill Pipe Size <u>4 1/2 XH</u>
Anchor Length <u>41</u>	Top Choke — 1" _____ Bottom Choke — 3/4" _____
Top Packer Depth <u>3044</u>	Hole Size — 7 7/8" _____ Rubber Size — 6 3/4" _____
Bottom Packer Depth <u>3049</u>	Wt. Pipe I.D. — 2.7 Ft. Run _____
Total Depth <u>3090</u>	Drill Collar — 2.25 Ft. Run _____
Mud Wt. <u>9.0</u> lb/gal.	Viscosity <u>44</u> Filtrate <u>11.0</u>
Tool Open @ <u>11:32AM</u>	Initial Blow <u>strong blow - bottom of bucket in 30 seconds</u>

Final Blow strong - bottom of bucket in 30 seconds
blow on shut-in

Recovery — Total Feet <u>1200</u>	Feet of Gas in Pipe <u>360</u>	Flush Tool? _____
Rec. <u>60</u> Feet Of <u>gsy 50 + WCM</u>	<u>15</u> %gas <u>10</u> %oil <u>45</u> %water <u>30</u> %mud	
Rec. <u>60</u> Feet Of <u>gsy 0 + WCM</u>	<u>20</u> %gas <u>20</u> %oil <u>30</u> %water <u>30</u> %mud	
Rec. <u>120</u> Feet Of <u>gsy 10 + WCM</u>	<u>10</u> %gas <u>5</u> %oil <u>20</u> %water <u>65</u> %mud	
Rec. <u>600</u> Feet Of <u>gsy 10 + WCM</u>	<u>10</u> %gas <u>5</u> %oil <u>50</u> %water <u>35</u> %mud	
Rec. <u>360</u> Feet Of <u>salt water</u>	%gas _____ %oil _____ %water _____ %mud _____	

BHT 115 °F Gravity _____ °API @ _____ °F Corrected Gravity _____ °API
RW .13 @ 80 °F Chlorides 53,000 ppm Recovery Chlorides 6000 ppm System

(A) Initial Hydrostatic Mud <u>1477</u>	PSI AK1 Recorder No. <u>22150</u>	Range <u>3925</u>
(B) First Initial Flow Pressure <u>210</u>	PSI @ (depth) <u>3052</u>	w/Clock No. <u>22992</u>
(C) First Final Flow Pressure <u>301</u>	PSI AK1 Recorder No. <u>24174</u>	Range <u>3050</u>
(D) Initial Shut-In Pressure <u>858</u>	PSI @ (depth) <u>3087</u>	w/Clock No. <u>30401</u>
(E) Second Initial Flow Pressure <u>415</u>	PSI AK1 Recorder No. _____	Range _____
(F) Second Final Flow Pressure <u>522</u>	PSI @ (depth) _____	w/Clock No. _____
(G) Final Shut-In Pressure <u>865</u>	PSI Initial Opening <u>15</u>	Test <u>600.00</u>
(H) Final Hydrostatic Mud <u>1416</u>	PSI Initial Shut-In <u>30</u>	Jars _____

Final Flow <u>45</u>	Safety Joint _____
Final Shut-In <u>60</u>	Straddle _____
	Circ. Sub _____
	Sampler _____
	Extra Packer _____
	Other _____

Approved By _____
Our Representative Paul Simpson

TOTAL PRICE \$ _____

TRILOBITE TESTING L.L.C. SHALL NOT BE LIABLE FOR DAMAGE OF ANY KIND OF THE PROPERTY OR PERSONNEL OF THE ONE FOR WHOM A TEST IS MADE, OR FOR ANY LOSS SUFFERED OR SUSTAINED, DIRECTLY OR INDIRECTLY, THROUGH THE USE OF ITS EQUIPMENT OR ITS STATEMENTS OR OPINION CONCERNING THE RESULTS OF ANY TEST. TOOLS LOST OR DAMAGED IN THE HOLE SHALL BE PAID FOR AT COST BY THE PARTY FOR WHOM THE TEST IS MADE.

TRILOBITE TESTING, L.L.C.

P.O. Box 362 • Hays, Kansas 67601

Drill-Stem Test Data

Well Name WEBER #1 Test No. 2 Date 9/19/93
Company PELICAN HILL OIL & GAS Zone LKC "G"
Address 2139 AVENIDA ESPADA SAN CLEMENTE CA 92672 Elevation 1880 KB
Co. Rep./Geo. RANDY KILIAN Cont. ALLEN RIG #3 Est. Ft. of Pay 13
Location: Sec. 16 Twp. 16S Rge. 12W Co. BARTON State KS

Interval Tested 3131-3145 Drill Pipe Size 4.5" XH
Anchor Length 14 Wt. Pipe I.D. - 2.7 Ft. Run _____
Top Packer Depth 3126 Drill Collar - 2.25 Ft. Run _____
Bottom Packer Depth 3131 Mud Wt. 9 lb/Gal.
Total Depth 3145 Viscosity 45 Filtrate N/A

Tool Open @ 12:17 AM Initial Blow 1/4" BLOW DECREASED & DIED IN 12 MINUTES

Final Blow NO BLOW

Recovery - Total Feet 15 Flush Tool? NO

Rec. 15 Feet of MUDDY WATER WITH GOOD SHOW OF OIL AT TOP
Rec. _____ Feet of _____
Rec. _____ Feet of _____
Rec. _____ Feet of _____
Rec. _____ Feet of _____

BHT 112 °F Gravity _____ °API @ _____ °F Corrected Gravity _____ °API
RW _____ @ _____ °F Chlorides _____ ppm Recovery Chlorides _____ ppm System

(A) Initial Hydrostatic Mud 1550.1 PSI AK1 Recorder No. 22150 Range 3925

(B) First Initial Flow Pressure 35.4 PSI @ (depth) 3135 w / Clock No. 27573

(C) First Final Flow Pressure 40.6 PSI AK1 Recorder No. 24174 Range 3050

(D) Initial Shut-in Pressure 731.4 PSI @ (depth) 3143 w / Clock No. 30401

(E) Second Initial Flow Pressure 441.7 PSI AK1 Recorder No. _____ Range _____

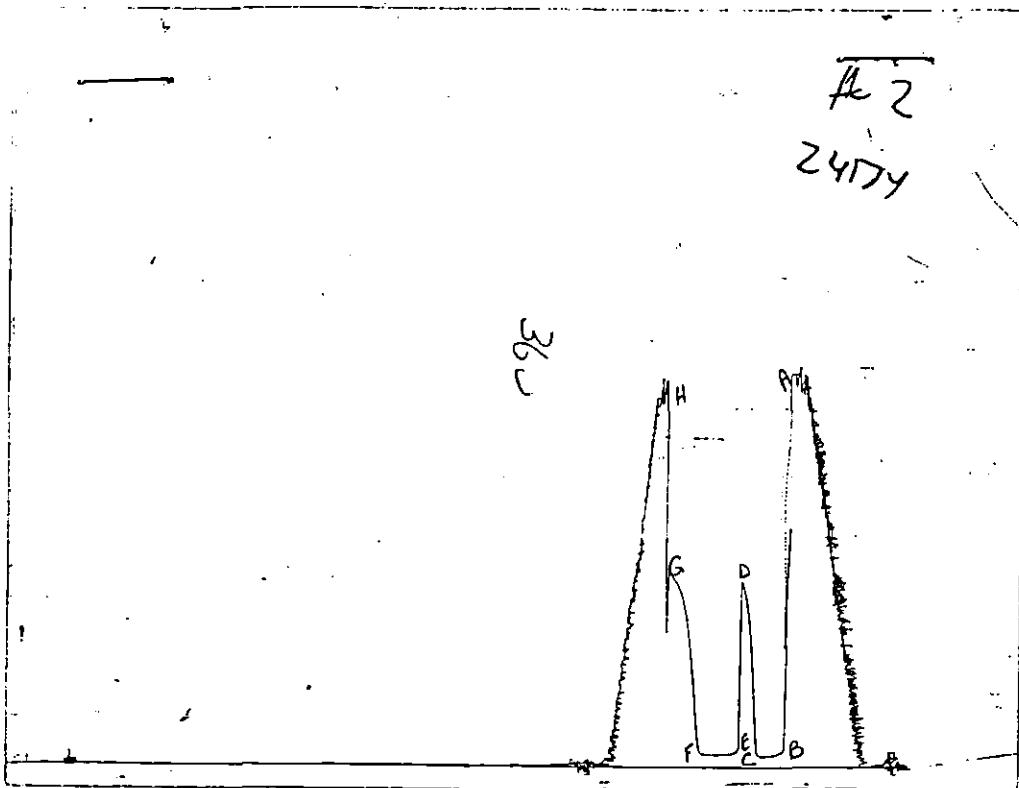
(F) Second Final Flow Pressure 41.7 PSI @ (depth) _____ w / Clock No. _____

(G) Final Shut-in Pressure 760.2 PSI Initial Opening 15 Final Flow 30

(H) Final Hydrostatic Mud 1520.4 PSI Initial Shut-in 15 Final Shut-in 30

Our Representative PAUL SIMPSON

CHART PAGE



This is an actual photograph of recorder chart

	FIELD READING	OFFICE READING
(A) INITIAL HYDROSTATIC MUD	1545	1550.1
(B) FIRST INITIAL FLOW PRESSURE	30	35.4
(C) FIRST FINAL FLOW PRESSURE	37	40.6
(D) INITIAL CLOSED-IN PRESSURE	728	731.4
(E) SECOND INITIAL FLOW PRESSURE	37	441.7
(F) SECOND FINAL FLOW PRESSURE	37	41.7
(G) FINAL CLOSED-IN PRESSURE	758	760.2
(H) FINAL HYDROSTATIC MUD	1515	1520.4

TRILOBITE TESTING L.L.C.

P.O. Box 362 • Hays, Kansas 67601

Test Ticket

№ 6140

Well Name & No. Webb #1 Test No. 2 Date 9-19-93
Company Pelican Hill Oil & Gas Zone Tested LKC-G
Address _____ Elevation 1880
Co. Rep./Geo. Randy Kilian cont. Allen #3 Est. Ft. of Pay 13
Location: Sec. 16 Twp. 16s Rge. 12w Co. Russell State K
No. of Copies 6 Distribution Sheet _____ Yes _____ No Turnkey _____ Yes _____ No _____ Evaluation _____

Interval Tested 3131-3145 Drill Pipe Size 4 1/2 XH
Anchor Length 14 Top Choke — 1" _____ Bottom Choke — 1/4" _____
Top Packer Depth 3126 Hole Size — 7 7/8" _____ Rubber Size — 6 3/4" _____
Bottom Packer Depth 3131 Wt. Pipe I.D. — 2.7 Ft. Run _____
Total Depth 3145 Drill Collar — 2.25 Ft. Run _____
Mud Wt. 9.0 lb/gal. Viscosity 45 Filtrate _____
Tool Open @ 12:10 AM Initial Blow 1/4" blow decreased & died in 12 minutes
Final Blow NO blow

Recovery — Total Feet	Feet of Gas In Pipe	Flush Tool?
Rec. <u>15</u> Feet Of <u>muddy water (w/ good show of oil at top)</u>	%gas _____ %oil _____	%water _____ %mud _____
Rec. _____ Feet Of _____	%gas _____ %oil _____	%water _____ %mud _____
Rec. _____ Feet Of _____	%gas _____ %oil _____	%water _____ %mud _____
Rec. _____ Feet Of _____	%gas _____ %oil _____	%water _____ %mud _____
Rec. _____ Feet Of _____	%gas _____ %oil _____	%water _____ %mud _____

BHT 112 °F Gravity _____ °API @ _____ °F Corrected Gravity _____ °API

RW _____ @ _____ °F Chlorides _____ ppm Recovery Chlorides _____ ppm System

(A) Initial Hydrostatic Mud 1545 PSI Ak1 Recorder No. 22150 Range 3925
(B) First Initial Flow Pressure 30 PSI @ (depth) 3135 w/Clock No. 27573
(C) First Final Flow Pressure 37 PSI AK1 Recorder No. 24174 Range 3050
(D) Initial Shut-In Pressure 728 PSI @ (depth) 3143 w/Clock No. 30401
(E) Second Initial Flow Pressure 37 PSI AK1 Recorder No. _____ Range _____
(F) Second Final Flow Pressure 37 PSI @ (depth) _____ w/Clock No. _____
(G) Final Shut-In Pressure 758 PSI Initial Opening 15 Test 600.00
(H) Final Hydrostatic Mud 1515 PSI Initial Shut-In 15 Jars _____

Final Flow 30 Safety Joint _____
Final Shut-In 30 Straddle _____
Circ. Sub _____
Sampler _____

Approved By _____
Our Representative Paul Simpson
Extra Packer _____
Other _____
TOTAL PRICE \$ _____

TRILOBITE TESTING, L.L.C.

P.O. Box 362 • Hays, Kansas 67601

Drill-Stem Test Data

Well Name WEBER #1 Test No. 3 Date 9/20/93
Company PELICAN HILL OIL & GAS Zone ARBUCKLE
Address 2139 AVENIDA ESPADA SAN CLEMENTE CA 92672 Elevation 1880 KB
Co. Rep./Geo. RANDY KILIAN Cont. ALLEN RIG #3 Est. Ft. of Pay _____
Location: Sec. 16 Twp. 16S Rge. 12W Co. BARTON State KS

Interval Tested 3307-3319 Drill Pipe Size 4.5" XH
Anchor Length 12 Wt. Pipe I.D. - 2.7 Ft. Run _____
Top Packer Depth 3302 Drill Collar - 2.25 Ft. Run _____
Bottom Packer Depth 3307 Mud Wt. 9.2 lb/Gal.
Total Depth 3319 Viscosity 51 Filtrate N/A

Tool Open @ 1:56 AM Initial Blow VERY STRONG-BOTTOM OF BUCKET IN 30 SECONDS
(BLOW BACK BUILT TO BOTTOM OF BUCKET IN 10 MINUTES)
Final Blow BOTTOM OF BUCKET IN 30 SECONDS

Recovery - Total Feet 2740 Flush Tool? NO

Rec. 560 Feet of GAS IN PIPE
Rec. 2740 Feet of GASSY OIL-40% GAS/ 60% OIL
Rec. _____ Feet of _____
Rec. _____ Feet of _____
Rec. _____ Feet of _____

BHT 115 °F Gravity 41 °API @ 60 °F Corrected Gravity 41 °API
RW _____ @ _____ °F Chlorides _____ ppm Recovery Chlorides _____ ppm System

(A) Initial Hydrostatic Mud 1671.3 PSI AK1 Recorder No. 22150 Range 3925

(B) First Initial Flow Pressure 288.1 PSI @ (depth) 3310 w/ Clock No. 22992

(C) First Final Flow Pressure 555.3 PSI AK1 Recorder No. 24174 Range 3050

(D) Initial Shut-in Pressure 1034.7 PSI @ (depth) 3316 w/ Clock No. 30401

(E) Second Initial Flow Pressure 635.8 PSI AK1 Recorder No. _____ Range _____

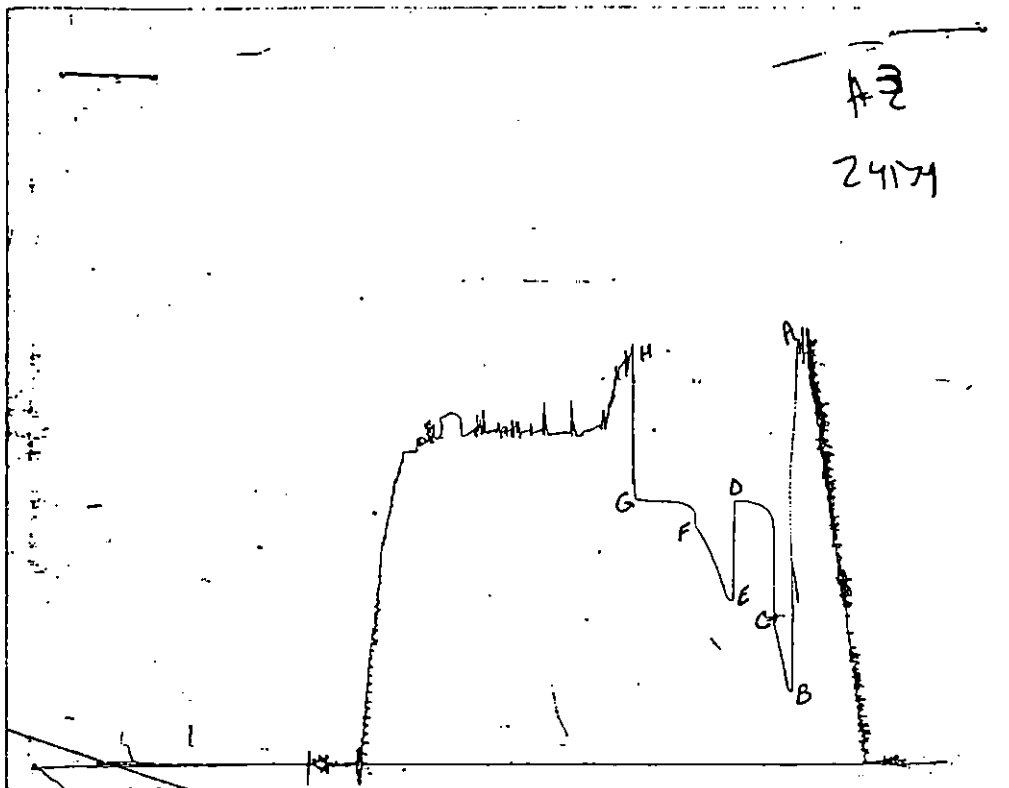
(F) Second Final Flow Pressure 930.1 PSI @ (depth) _____ w/ Clock No. _____

(G) Final Shut-in Pressure 1033.6 PSI Initial Opening 15 Final Flow 30

(H) Final Hydrostatic Mud 1644.7 PSI Initial Shut-in 30 Final Shut-in 45

Our Representative PAUL SIMPSON

CHART PAGE

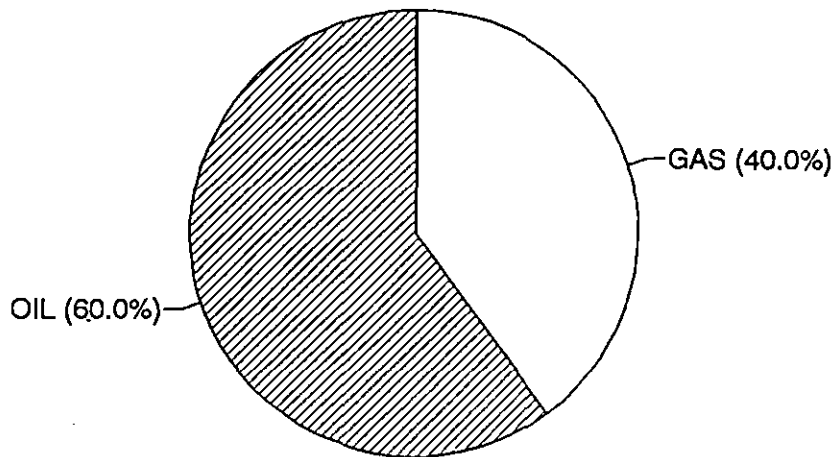


This is an actual photograph of recorder chart

	FIELD READING	OFFICE READING
(A) INITIAL HYDROSTATIC MUD	1666	1671.3
(B) FIRST INITIAL FLOW PRESSURE	285	288.1
(C) FIRST FINAL FLOW PRESSURE	553	555.3
(D) INITIAL CLOSED-IN PRESSURE	1032	1034.7
(E) SECOND INITIAL FLOW PRESSURE	637	635.8
(F) SECOND FINAL FLOW PRESSURE	926	930.1
(G) FINAL CLOSED-IN PRESSURE	1032	1033.6
(H) FINAL HYDROSTATIC MUD	1643	1644.7

DST #	CALCULATED RECOVERY ANALYSIS					DRILL	PIPE		
	3	TICKET					6141		
SAMPLE #	TOTAL FEET	GAS %	FEET	OIL %	FEET	WATER %	FEET	MUD %	FEET
1	2740	40	1096	60	1644	0	0	0	0
2			0		0		0		0
3			0		0		0		0
4			0		0		0		0
5			0		0		0		0
TOTAL	2740	40	1096	60	1644	0	0	0	0

			HRS	BBL/DAY
BBL OIL=	23.37768	*	0.75	748.09
BBL WATER=	0	*		0
BBL MUD=	0			
BBL GAS	15.58512			



TRILOBITE TESTING L.L.C.

P.O. Box 362 • Hays, Kansas 67601

Test Ticket

NO 6141

Well Name & No. Waber #1 Test No. 3 Date 9-20-93
Company Pelican Hill Oil & Gas Zone Tested Arbuckle
Address _____ Elevation 1880
Co. Rep./Geo. Randy Kilian cont. Alla #3 Est. Ft. of Pay _____
Location: Sec. 16 Twp. 16s Rge. 12w Co. Berk State Kr
No. of Copes 6 Distribution Sheet _____ Yes _____ No Turnkey _____ Yes _____ No N/A Evaluation

Interval Tested 3307-3319 Drill Pipe Size 4 1/2 YH
Anchor Length 12 Top Choke — 1" _____ Bottom Choke — 1/4" _____
Top Packer Depth 3302 Hole Size — 7 7/8" _____ Rubber Size — 6 3/4" _____
Bottom Packer Depth 3307 Wt. Pipe I.D. — 2.7 Ft. Run _____
Total Depth 3319 Drill Collar — 2.25 Ft. Run _____
Mud Wt. 9.2 lb/gal. Viscosity 51 Filtrate _____
Tool Open @ 1:56 AM Initial Blow ~~10~~ very strong - bottom of bucket in 30
seconds (blowback built to bottom of bucket in 10 minutes)
Final Blow bottom of bucket in 30 seconds

Recovery — Total Feet	Feet of Gas In Pipe	Flush Tool?
Rec. <u>2740</u> Feet Of <u>gassy oil</u>	<u>560</u>	
Rec. _____ Feet Of _____	<u>40% gas 60% oil</u>	%water _____ %mud _____
Rec. _____ Feet Of _____	%gas _____ %oil _____	%water _____ %mud _____
Rec. _____ Feet Of _____	%gas _____ %oil _____	%water _____ %mud _____
Rec. _____ Feet Of _____	%gas _____ %oil _____	%water _____ %mud _____
Rec. _____ Feet Of _____	%gas _____ %oil _____	%water _____ %mud _____

BHT _____ °F Gravity 41 °API @ 60 °F Corrected Gravity 41 °API

RW _____ @ _____ °F Chlorides _____ ppm Recovery Chlorides _____ ppm System

(A) Initial Hydrostatic Mud 1666 PSI AK1 Recorder No. 22150 Range 3925
(B) First Initial Flow Pressure 285 PSI @ (depth) 3310 w/Clock No. 22992
(C) First Final Flow Pressure 553 PSI AK1 Recorder No. 24174 Range 3050
(D) Initial Shut-In Pressure 1032 PSI @ (depth) 3316 w/Clock No. 30401
(E) Second Initial Flow Pressure 632 PSI AK1 Recorder No. _____ Range _____
(F) Second Final Flow Pressure 926 PSI @ (depth) _____ w/Clock No. _____
(G) Final Shut-In Pressure 1032 PSI Initial Opening 15 Test ✓ bottom
(H) Final Hydrostatic Mud 1643 PSI Initial Shut-In 30 Jars _____

TRILOBITE TESTING L.L.C. SHALL NOT BE LIABLE FOR DAMAGE OF ANY KIND OF THE PROPERTY OR PERSONNEL OF THE ONE FOR WHOM A TEST IS MADE, OR FOR ANY LOSS SUFFERED OR SUSTAINED, DIRECTLY OR INDIRECTLY, THROUGH THE USE OF ITS EQUIPMENT, OR ITS STATEMENTS OR OPINION CONCERNING THE RESULTS OF ANY TEST. TOOLS LOST OR DAMAGED IN THE HOLE SHALL BE PAID FOR AT COST BY THE PARTY FOR WHOM THE TEST IS MADE.

Final Flow 30 Safety Joint _____
Final Shut-In 45 Straddle _____
Circ. Sub ✓ 3500
Sampler _____

Approved By [Signature]
Our Representative Paul Simpson

Extra Packer _____
Other 1 extra copy
TOTAL PRICE \$ 635.00

483-2627, Russell, Kansas
 16-793-5861, Great Bend, Kansas

Phone Plainville 913-434-2812
 Phone Ness City 913-798-3843

ORIGINAL
ALLIED CEMENTING CO., INC.
 Home Office P. O. Box 31
 Russell, Kansas 67665

3541

New

Date	9-15-93	Sec.	16	Twp.	16 s	Range	12 W	Called Out	9:00 AM	On Location	10:30 AM	Job Start	2:30 PM	Finish	2:45 PM
Lease	WEBER	Well No.	#1	Location	BEAVER 2N 3/4E 14S			County	BARTON	State	KANSAS				
Contractor	ALLEN DRUG RIG #3														
Type Job	HOLEY SURFACE														
Hole Size	12 1/4		T.D.	802'											
Csg.	8 5/8		25# USED	Depth	800'										
Tbg. Size															
Drill Pipe															
Tool															
Cement Left in Csg.	15'		Shoe Joint												
Press Max.															
Meas Line	✓		Displace	✓ 50 BBL											
Perf.															

EQUIPMENT

Pumptrk #177	No.	Cementer	<i>[Signature]</i>
		Helper	
Pumptrk #254	No.	Cementer	<i>[Signature]</i>
		Helper	
Bulktrk #254		Driver	<i>[Signature]</i>
		Driver	

DEPTH of Job		
Reference:	Pump Truck CHRG	430 00
	2.25/PER MILE	58 50
	1-8 5/8 WOODEN PLUG	42 00
	Sub Total	
	Tax	
	Total	530 50

Remarks:
 Cement Circulated
[Signature]

Owner
 To Allied Cementing Co., Inc.
 You are hereby requested to rent cementing equipment and furnish cementer and helper to assist owner or contractor to do work as listed.

Charge To
 PELICAN HILL Oil & GAS

Street
 2139 Avenida Espada

City
 San Clemente State Calif 92672

The above was done to satisfaction and supervision of owner agent or contractor.

Purchase Order No.
 X *Martin Pitz*

CEMENT

Amount Ordered
 300 SK 6940 27662 370cc

Consisting of		
Common	100 @ 575	1035 00
Poz. Mix	120 @ 3 00	360 00
Gel.	6 @ N/C	N/C
Chloride	9 @ 25 00	225 00
Quickset		
Sales Tax		
Handling	@ 1 00	300 00
Mileage	4 1/2 @ 1 mile	312 00
	26	
Sub Total		
Total		2232 00

Floating Equipment
[Signature]

2627, Russell, Kansas

316-793-5861, Great Bend, Kansas

Phone Plainville 913-434-2812

Phone Ness City 913-798-3843

ORIGINAL

ALLIED CEMENTING CO., INC.

3544

Home Office P. O. Box 31

Russell, Kansas 67665

New

Date	9-20-93	Sec.	16	Twp.	16	Range	12	Called Out	2:00 PM	On Location	4:00 PM	Job Start	10:30 AM	Finish	11:00 PM
Lease	WEBER	Well No.	#1	Location				BEAVER 1E 1 3/4 N 1/4 W	County	BARTON	State	KANSAS			
Contractor	ALLEN DALG. RIG #3														
Type Job	PRODUCTION STRING														
Hole Size	7 7/8	T.D.	3319'												
Csg.	5 1/2	USED	Depth	3314'											
Tbg. Size		Depth													
Drill Pipe		Depth													
Tool	AFU INSERT	Depth	3301'												
Cement Left in Csg.	13 ⁶⁰	Shoe Joint	13 ⁶⁰												
Press Max.		Minimum													
Meas Line	✓	Displace	✓ 80 BBL												
Perf.															

Owner
To Allied Cementing Co., Inc.
You are hereby requested to rent cementing equipment and furnish cementer and helper to assist owner or contractor to do work as listed.

Charge To
PELICAN Hill Oil & Gas Inc.
Street
2139 Avenida Espada
City
San Clemente State Calif. 92672

The above was done to satisfaction and supervision of owner agent or contractor.

Purchase Order No.
[Signature]

X

EQUIPMENT

Pumptrk	# 177	No.	Cementer	<i>[Signature]</i>
			Helper	<i>[Signature]</i>
Pumptrk		No.	Cementer	
			Helper	
Bulktrk	# 213		Driver	<i>[Signature]</i>
Bulktrk			Driver	

500 GAL WFR-2 CEMENT

Amount Ordered
150 SK ASC.

Consisting of

Common		
Poz. Mix		
ASC - 150 @ 750		1125 ⁰⁰
Chloride		
Quickset		
WFR-2 500 gals @ 1 ⁰⁰		500 ⁰⁰
Sales Tax		
Handling @ 1 ⁰⁰		150 ⁰⁰
Mileage 4 @ 75¢/Mile		180 ⁰⁰
30		
Sub Total		
Total		1955 ⁰⁰

DEPTH of Job

Reference:	Pump TRUCK CHRG	480 ⁰⁰
	2 ²⁵ /PER MILE	675 ⁰⁰
	1-5 1/2 RUBBER PHWG	45 ⁰⁰
Sub Total		
Tax		
Total		1092 ⁵⁰

Remarks:

Float Held (43' long) →

15 SK Cement @ RATHOLE

[Signature]

Floating Equipment

5 1/2 CSG.

1- BAKER AFU	189 ⁰⁰
5- CENTRALIZERS 5 @ 56 ⁰⁰	280 ⁰⁰
1- ARROW BASKET SHOE	1,275 ⁰⁰
	1,744 ⁰⁰

RECEIVED
KANSAS CORPORATION COMMISSION

JUL 11 1996

CONSERVATION DIVISION
WICHITA, KS