

TYPE OR PRINT

NOTICE OF INTENTION TO DRILL

RULE 82-2-311.

15-159-20,309-0000

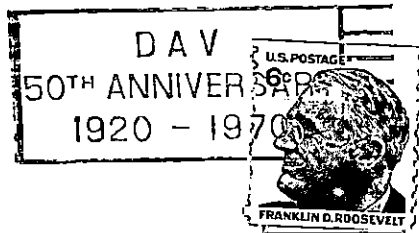
TO BE FILED WITH THE STATE CORPORATION COMMISSION PRIOR TO COMMENCEMENT OF WELL

- Operator Commercial Oil Inc Address 5252 N. Broadway Wichita
- Lease name Walsten Well No. 3 E County Rice
- Well Location NW SE SW Sec. 8 Township 21 S Range 6 W
- Well to be drilled 330 ft. from nearest lease line.
- Drilling Contractor H-30 Address Wichita
- Type of equipment: Rotary  Cable Tool . Approx. date operation to begin MAY 14 1957
- Well to be drilled for Oil  Gas  Disposal  Input  Estimated Total Depth of Well 3530 ft.
- Depth of deepest fresh water well within one mile of location None ft. If none exists, write NONE
- Ground elevation at location is approx. \_\_\_\_\_ ft. higher or \_\_\_\_\_ ft. lower than ground elevation at water well.
- Depth of the deepest municipal water well within three miles of location None ft. If none exists, write NONE
- Operator states that he will set surface pipe at least 25 ft. below all Tertiary or unconsolidated deposits and, taking into consideration differences in ground elevations, that the minimum depth necessary, to the best of his knowledge and belief, to protect all fresh water zones is 80 ft. and operator agrees to set surface pipe at this location to a depth of not less than 200 ft. Alternate 1  Alternate 2 .

REMARKS:

Signature of Operator W.P. Linneman





**State Corporation Commission of Kansas  
Conservation Division  
500 Insurance Building  
212 North Market  
Wichita 2, Kansas**

**RECEIVED  
STATE CORPORATION COMMISSION  
MAY 12 1970  
CONSERVATION DIVISION  
Wichita, Kansas**

**(IF PREFERRED, MAIL IN ENVELOPE)**