

TYPE OR PRINT

NOTICE OF INTENTION TO DRILL

15-145-19056-0000

RULE 82-2-311

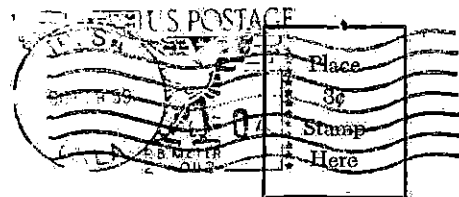
TO BE FILED WITH THE STATE CORPORATION COMMISSION PRIOR TO COMMENCEMENT OF WELL

1. Operator APACHE OIL CORPORATION Address 823 South Detroit, Tulsa 20, Oklahoma
2. Lease name Piller Well No. 1 County Pawnee
3. Well Location C SW NW Sec. 31 Township 23 S Range 16 W
4. Well to be drilled 810 ft. from nearest lease line.
5. Drilling Contractor Sierra Petroleum Co., Inc. Address Wichita, Kansas
6. Type of equipment: Rotary Cable Tool Approx. date operation to begin Oct. 20 195 9 OK
7. Well to be drilled for Oil Gas Disposal Input Estimated Total Depth of Well 4250 ft.
8. Depth of deepest fresh water well within one mile of location --- ft. If none exist, write NONE ---
9. Ground elevation at location is approx. --- ft. higher or --- ft. lower than ground elevation at water well.
10. Depth of the deepest municipal water well within three miles of location --- ft. If none exist, write NONE None
11. Operator states that he will set surface pipe at least 25 ft. below all Tertiary or unconsolidated deposits and, taking into consideration differences in ground elevations, that the minimum depth necessary, to the best of his knowledge and belief, to protect all fresh water zones is 200 ft. and operator agrees to set surface pipe at this location to a depth of not less than 200 ft. Alternate 1 Alternate 2

REMARKS:

Signature of Operator





**State Corporation Commission of Kansas
Conservation Division
500 Insurance Building
212 North Market
Wichita 2, Kansas**

RECEIVED
STATE CORPORATION COMMISSION

OCT 20 1959

CONSERVATION DIVISION
Wichita, Kansas

(IF PREFERRED, MAIL IN ENVELOPE)

TO BE FILED WITH THE STATE CORPORATION COMMISSION PRIOR TO COMMENCEMENT OF WELL

1. Operator APACHE OIL CORPORATIO N Address 823 South Detroit, Tulsa, Oklahoma
2. Lease name Piller Well No. 1 County Pawnee
3. Well Location C SW NW Sec. 31 Township 23S Range 16W
4. Well to be drilled 810 ft. from nearest lease line.
5. Drilling Contractor Sierra Petroleum Co, Inc. Address Wichita, Kansas
6. Type of equipment: Rotary Cable Tool Approx. date operation to begin Oct. 20 195 9
7. Well to be drilled for Oil Gas Disposal Input Estimated Total Depth of Well 4250 ft.
8. Depth of deepest fresh water well within one mile of location ---- ft. If none exist, write NONE ----.
9. Ground elevation at location is approx. ----- ft. higher or ----- ft. lower than ground elevation at water well.
10. Depth of the deepest municipal water well within three miles of location ----- ft. If none exist, write NONE none.
11. Operator states that he will set surface pipe at least 25 ft. below all Tertiary or unconsolidated deposits and, taking into consideration differences in ground elevations, that the minimum depth necessary, to the best of his knowledge and belief, to protect all fresh water zones is 200 ft. and operator agrees to set surface pipe at this location to a depth of not less than 200 ft. Alternate 1 Alternate 2 .

REMARKS:

Signature of Operator

Lloyd O. Somers

Place
3¢
Stamp
Here

State Corporation Commission of Kansas
Conservation Division
500 Insurance Building
212 North Market
Wichita 2, Kansas

RECEIVED
STATE CORPORATION COMMISSION

AUG 4 1960

CONSERVATION DIVISION
Wichita, Kansas

(IF PREFERRED, MAIL IN ENVELOPE)