

STATE OF KANSAS
STATE CORPORATION COMMISSION
CONSERVATION DIVISION
200 Colorado Derby Building
Wichita, Kansas 67202

FORM CP-1
Rev. 2/89

WELL PLUGGING APPLICATION FORM

(File One Copy)

API NUMBER NOT AVAILABLE 15-045-20831.00.00
2-12-86 (of this well).

(This must be listed; if no API# was issued, please note drilling completion date.)

WELL OWNER/OPERATOR Colt Energy, Inc. OPERATOR'S LICENSE NO. 5150 6/97

ADDRESS P.O. Box 388, Iola, Kansas 66749 PHONE # (316) 365-3111

LEASE (FARM) HARSIN WELL NO. 1 WELL LOCATION NESENE COUNTY DOUGLAS

SEC. 15 TWP. 14 RGE. 20 (E) or (W) TOTAL DEPTH 728 PLUG BACK TO TO SURFACE

Check One:

OIL WELL GAS WELL D & A SWD or INJ WELL DOCKET NO. _____

SURFACE CASING SIZE _____ SET AT _____ CEMENTED WITH _____ SACKS

CASING SIZE 2 1/2" SET AT 728 CEMENTED WITH TO SURFACE SACKS

PERFORATED AT 672-678

CONDITION OF WELL: GOOD POOR CASING LEAK JUNK IN HOLE

PROPOSED METHOD OF PLUGGING Cement squeeze bottom to surface

(If additional space is needed use back of form.)

IS WELL LOG ATTACHED TO THIS APPLICATION AS REQUIRED? yes IS ACO-1 FILED? UNKNOWN
LEASE PURCHASED FROM KANSAS OIL PROPERTIES - INFORMATION NOT AVAILABLE FROM THEM.

DATE AND HOUR PLUGGING IS DESIRED TO BEGIN WITHIN 90 DAYS / AS SCHEDULED PERMITS

PLUGGING OF THIS WELL WILL BE DONE IN ACCORDANCE WITH K.S.A. 55-101 et. seq. AND THE RULES AND REGULATIONS OF THE STATE CORPORATION COMMISSION.

NAME OF REPRESENTATIVE AUTHORIZED TO BE IN CHARGE OF PLUGGING OPERATIONS: Melvin Norman PHONE # (316) 365-3111

ADDRESS P.O. Box 388, Iola, Kansas 66749

PLUGGING CONTRACTOR Company Tools Consolidated Oilwell Services LICENSE NO. 5150

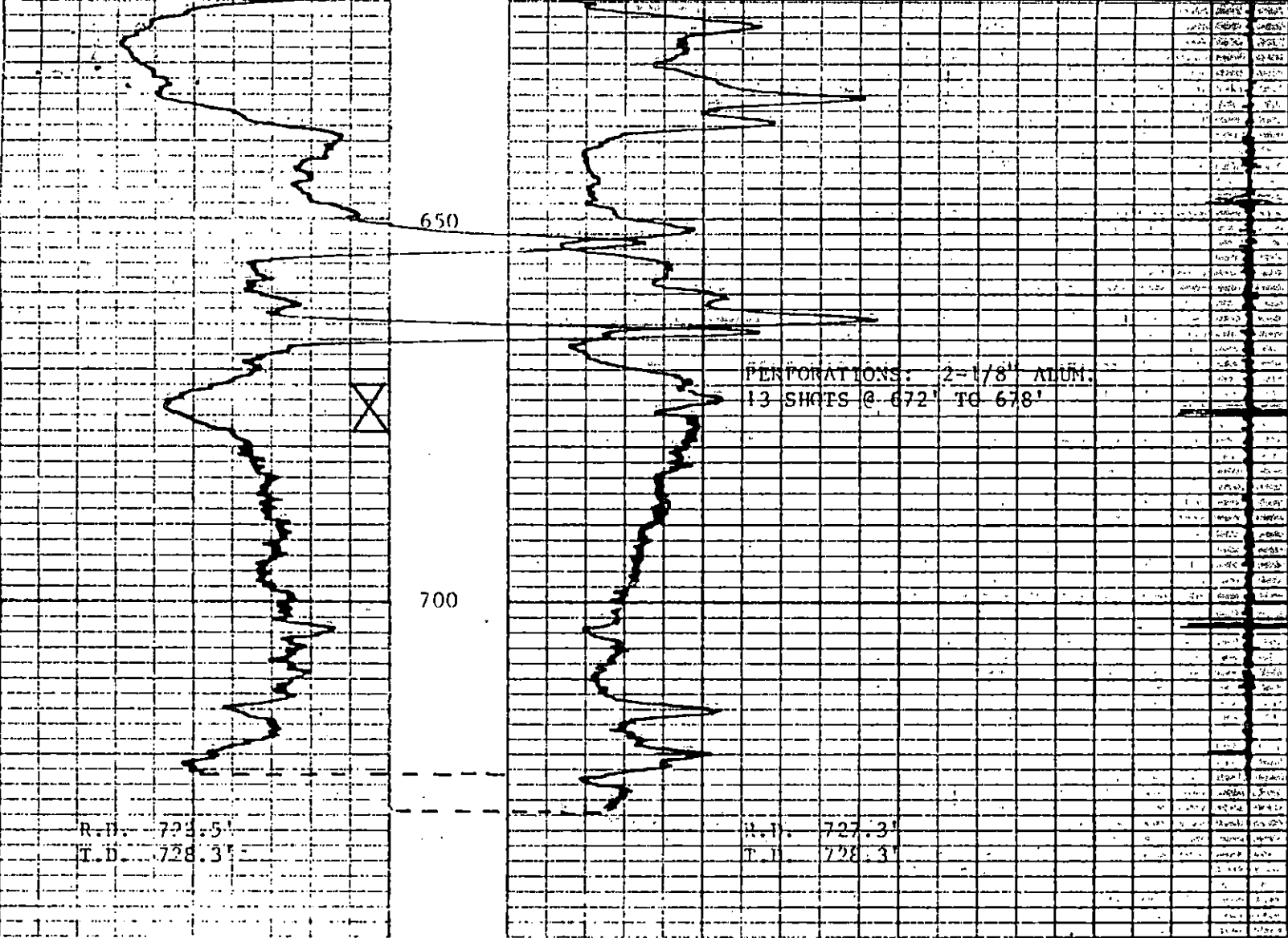
ADDRESS IOLA CHANGE, Kansas 66749 PHONE # (316) 431-9240 365-3111

PAYMENT OF THE PLUGGING FEE (K.A.R. 82-3-118) WILL BE GUARANTEED BY OPERATOR OR AGENT.

SIGNED: Donni Keshen
(operator or Agent)

DATE: 5-12-97

3



15.045.20831.00.00

HARSIN NO. 1
 KANSAS OIL PROPERTIES
 DOUGLAS COUNTY, KANSAS
 FEBRUARY 12, 1986

15/14S/20E

RECEIVED
 STATE CORPORATION COMMISSION
 MAY 14 1997
 CONSERVATION DIVISION
 Wichita, Kansas

COLT ENERGY, INC.

CORPORATE OFFICE

P.O. Box 388 • 304 N. Jefferson • Iola, Ks. 66749
Phone (316) 365-3111 • Fax (316) 365-3170

May 12, 1997

RECEIVED
STATE CORPORATION COMMISSION

MAY 14 1997

CONSERVATION DIVISION
Wichita, Kansas

KCC Conservation Office
Wichita State Office Bldg.
130 S. Market, Room 2078
Wichita, Kansas 67202-1286

Enclosed find copies of Well Plugging Application Form CP-1 from Colt Energy, Inc. on the Harsin lease located Section 15-14-20E Douglas County, Kansas requesting permission to plug the four wells located on this lease.

If you have any questions, contact Dennis Kershner at 316-365-3111.

Sincerely,
COLT ENERGY, INC.

Shirley Stotler
Shirley Stotler
Production Clerk

ss
Encl.

COLT ENERGY, INC.
P.O. Box 388
Iola, Kansas 66749

Phone (316) 365-3111 • Fax (316) 365-3170

Conservation Division
Wichita, Kansas



Kansas Corporation Commission

Bill Graves, Governor Timothy E. McKee, Chair Susan M. Seltsam, Commissioner John Wine, Commissioner
Judith McConnell, Executive Director David J. Heinemann, General Counsel

NOTICE OF RECEIPT OF WELL PLUGGING APPLICATION (CP-1)

May 14, 1997

Colt Energy Inc
P O Box 388
Iola KS 66749

Harsin #1
API 15-045-20,831 · 00.00
N/A
Sec. 15-14S-20E
Douglas County

Dear Melvin Norman,

This letter is to notify you that the Conservation Division is in receipt of your plugging proposal, form CP-1, for the above-captioned well.

Your CP-1 has been reviewed by the Conservation Division central office for completeness and to verify license numbers. The plugging proposal will now be forwarded to the district office listed below for review of your proposed method of plugging.

Please contact the district office for approval of your proposed plugging method at least at five (5) days before plugging the well, pursuant to K.A.R. 82-3-113 (b). If a workover pit will be used during the plugging of the well it must be permitted. A CDP-1 form must be filed and approved prior to the use of the pit.

The Conservation Division's review of form CP-1, either in the central or district office, does not include an inquiry into well ownership or the filing operator's legal right to plug the well.

This notice in no way constitutes authorization to plug the above-captioned well by persons not having legal rights of ownership or interest in the well. This notice is void after ninety (90) days from the above date.

Sincerely,

A handwritten signature in cursive script, reading "David P. Williams".

David P. Williams
Production Supervisor

District: #3
1500 W. 7th
Chanute KS 67220
(316) 431-6946