

STATE OF KANSAS  
STATE CORPORATION COMMISSION  
200 Colorado Derby Bldg.  
Wichita, Kansas 67202

Form CP-4  
Rev. 12-15-80

WELL PLUGGING RECORD

Give All Information Completely  
Make Required Affidavit

COUNTY Pawnee SEC. 19 TWP. 20 RGE. 20 E/W  
Location as in quarters or footage from lines:  
1980' FWL and 660' FSL


Lease Owner Tenneco Oil Co.  
Lease Name Beltz Well No. 4-19  
Office Address 139 Ciudad Bldg., 3000 United Founders Blvd.  
Okla City, Okla. 73112  
Character of Well (Completed as Oil, Gas or Dry Hole): Dry Hole  
Date Well Completed May 7, 1981  
Application for plugging filed Verbal application  
Plugging commenced 5-7-81  
Plugging completed 5-7-81  
Reason for abandonment of well or producing formation \_\_\_\_\_

Locate Well  
correctly on above  
Section Platt.

Was permission obtained from the Conservation Division or it's  
Agent's before plugging was commenced? Yes

Name of Conservation Agent who supervised plugging of this well Marian Schmidt

Producing formation \_\_\_\_\_ Depth to top \_\_\_\_\_ bottom \_\_\_\_\_ T.D. 4,445'

Show depth and thickness of all water, oil and gas formations.

OIL, GAS OR WATER RECORDS

Casing Record

Formation	Content	From	To	Size	Put in	Pulled Out
				8-5/8"	465'	

Describe in detail the manner in which the well was plugged, indicating where the mud  
fluid was placed and the method or methods used in introducing it into the hold. If cement  
or other plugs were used, state the character of same and depth placed, from \_\_\_\_\_ feet  
to \_\_\_\_\_ feet for each plug set.

65sxs at 680'  
30 sxs at 270'  
10 sxs and Plug at 40'  
5 sxs in rathole

(If additional description is necessary, use BACK of this sheet)

Name of Plugging Contractor Sun Oil Well Cementing Co.

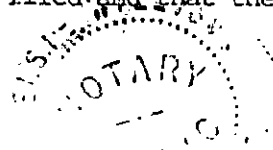
RECEIVED  
STATE CORPORATION COMMISSION

MAY 18 1981

STATE OF Kansas COUNTY OF Sedgwick, ss.

Gary Younger (~~employee~~ of owner) or (~~owner~~ <sup>CONSERVATION DIVISION</sup> of the  
above-described well, being first duly sworn on oath, says: That I have knowledge of the  
facts, statements, and matters herein contained and the log of the above-described well as  
filed and that the same are true and correct. So help me God.

(Signature) Gary Younger  
251 N. Water #10, Wichita, Ks.  
(Address) 67202



SUBSCRIBED AND SWORN TO before me this 14th day of May, 19 81

Elsie Willison  
Elsie Willison - Notary Public.

My Commission expires: July 25, 1981

KANSAS

WELL COMPLETION REPORT AND  
DRILLER'S LOG

S. 19 T. 20S R. 20 X  
W

Loc. C, SE. SW

County Pawnee

API No. 15 — 145 — 20,863 . 0000  
County Number

Operator  
Tenneco Oil Company

Address Suite 139, Ciudad Bldg.  
3000 United Founders Blvd., Okla. City, OK, 73112

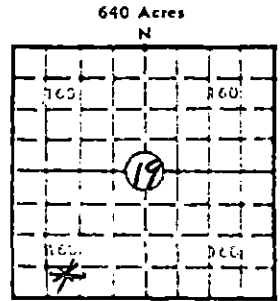
Well No. 4-19 Lease Name Beltz

Footage Location  
660 feet from (N) (S) line 1980 feet from (E) (W) line

Principal Contractor H-30, Inc. Geologist

Spud Date 4-29-81 Date Completed 5-7-81 Total Depth 4445' P.B.T.D.

Directional Deviation Oil and/or Gas Purchaser



Locate well correctly

Elev.: Gr. \_\_\_\_\_

DF \_\_\_\_\_ KB \_\_\_\_\_

CASING RECORD

Report of all strings set — surface, intermediate, production, etc.

Purpose of string	Size hole drilled	Size casing set (in O.D.)	Weight lbs/ft.	Setting depth	Type cement	Sacks	Type and percent additives
Surface	12-1/4"	8-5/8"		465'	Common	250	3% CACL <sub>2</sub> + 2% Gel

LINER RECORD

Top, ft.	Bottom, ft.	Sacks cement	Shots per ft.	Size & type

TUBING RECORD

Size	Setting depth	Packer set at

ACID, FRACTURE, SHOT, CEMENT SQUEEZE RECORD

Amount and kind of material used	Depth interval treated

INITIAL PRODUCTION

Date of first production	Dry	Producing method (flowing, pumping, gas lift, etc.)
RATE OF PRODUCTION PER 24 HOURS	Oil Dry bbls.	Gas Dry MCF
Disposition of gas (vented, used on lease or sold)	Water bbls.	Gas-oil ratio CFPB
	Producing interval(s)	Dry

INSTRUCTIONS: As provided in KCC Rule 82-2-125, within 90 days after completion of a well, one completed copy of this Drillers Log shall be transmitted to the State Geological Survey of Kansas, 4150 Monroe Street, Wichita, Kansas 67209. Copies of this form are available from the Conservation Division, State Corporation Commission, 245 No. Water, Wichita, Kansas 67202. Phone AC 316-522-2206. If confidential custody is desired, please note Rule 82-2-125. Drillers Logs will be on open file in the Oil and Gas Division, State Geological Survey of Kansas, Lawrence, Kansas 66044.

Operator Tenneco Oil Company		DESIGNATE TYPE OF COMP.: OIL, GAS, DRY HOLE, SWDW, ETC.:
Well No. 4-19	Lease Name Beltz . . .	Dry

S 19 T 20SR 20 <sup>K</sup> W

**WELL LOG**

Show all important zones of porosity and contents thereof; cored intervals, and all drill-stem tests, including depth interval tested, cushion used, time tool open, flowing and shut-in pressures, and recoveries.

SHOW GEOLOGICAL MARKERS, LOGS RUN, OR OTHER DESCRIPTIVE INFORMATION.

FORMATION DESCRIPTION, CONTENTS, ETC.	TOP	BOTTOM	NAME	DEPTH
Post Rock & Shale	0	320		
Shale	320	800		
Sand	800	925		
Shale	925	2265		
Shale & Lime	2265	3615		
Lime & Shale	3615	3855		
Shale & Lime	3855	4111		
Lime	4111	4385		
Shale & Lime	4385	4445	TD	

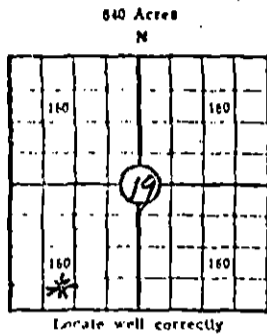
USE ADDITIONAL SHEETS, IF NECESSARY, TO COMPLETE WELL RECORD.

Date Received	<i>Carolyn Arnold</i>
	Signature Production Analyst Carolyn Arnold
	Title July 14, 1981
	Date

KANSAS CORPORATION COMMISSION

WELL RECORD

(Mail to Kansas Geological Survey, 4150 Monroe Street, Wichita, Kansas 67209)



Lease Name: Beltz Well No. 4-19  
 Well Located: 1980' FWL, 660' FSL, C SE SW  
Pawnee SEC 19 TWP 20S RGE 20W  
 Operator: Tenneco Oil Company  
 Address: Suite 139, Ciudad Bldg., 3000 United Founders Blvd, Okla. City, OK, 73112  
 Elevation: Ground 2182' D.F. K.B.  
 Type Well: (Oil, gas, dry hole) Dry

Drilling Commenced: 4-29 19 81 Drilling Completed: 5-7 19 81  
 Well Completed: 5-7 19 81 Total Depth 4445'  
 Initial Production: Dry Hole

Casing Record

Size: 8-5/8" Set at 465' Size: \_\_\_\_\_ Set at \_\_\_\_\_  
 Size: \_\_\_\_\_ Set at \_\_\_\_\_ Size: \_\_\_\_\_ Set at \_\_\_\_\_

Liner Record

Size: \_\_\_\_\_ Set from \_\_\_\_\_ To \_\_\_\_\_

Cementing

Casing Size	Sacks	Type Cement and Additives
<u>8-5/8"</u>	<u>250</u>	<u>Common 3% CC 2% Gel</u>
_____	_____	_____
_____	_____	_____

RECEIVED STATE CORPORATION COMMISSION

MAY 20 1981

CONSERVATION DIVISION Wichita, Kansas

Perforations

Formation	Perforated Interval and Number Shots
_____	_____
_____	_____
_____	_____

Electric Log Run (Show type log and depths covered)

Dual Laterlog

(Fill in formation and related information on reverse side)

FORMATION, TESTING AND COMPLETION RECORD

Formation	Top	Bottom	Show Drill Stem Tests, Well Stimulation and Production Tests
Post Rock & Shale	0	320	DST #1 - 4336'-4352'
Shale	320	800	IH 2209
Sand	800	925	IF 12-12
Shale	925	2265	ISIP 36
Shale & Lime	2265	3615	FF 24-24
Lime & Shale	3615	3855	FSIP 36
Shale & Lime	3855	4111	FH 2182
Lime	4111	4385	BHT 35
Shale & Lime	4385	4445	Rec. - 16' DM
T.D.		4445	

KANSAS DRILLERS LOG

COMPANY Tenneco Oil Co.

SEC. 19 T. 20 R. 20W

FARM Beltz

NO. 4-19

LOC. 1980' FWL  
660' FSL

COUNTY Pawnee

ROTARY TOTAL DEPTH 4445'

COMM. April 29, 1981

COMP. May 7, 1981

CONTRACTOR H-30, INC.

ISSUED May 14, 1981

CASING

10 3/4"

8 5/8" Set at 465' cemented w/250 sxs cement

5 1/2"

4 1/2"

ELEVATION 2,182'

FIGURES INDICATE BOTTOM OF FORMATIONS

Post Rock and Shale	320'
Shale	800'
Sand	925'
Shale	2,265'
Shale and Lime	3,615'
Lime and Shale	3,855'
Shale and Lime	4,111'
Lime	4,385'
Shale and Lime	4,445'
Rotary Total Depth	4,445'

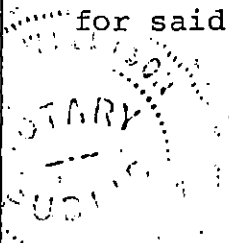
I hereby certify the above and foregoing to be a true and correct log of the above described well as shown by the drilling reports.

H-30, INC.

*Gary Younger*  
\_\_\_\_\_  
Gary Younger

State of Kansas )  
                          ) ss:  
County of Sedgwick )

Subscribed and Sworn to before me, a Notary Public, in and for said county and state this 14th day of May, 1981.



*Elsie Willison*  
\_\_\_\_\_  
Elsie Willison - Notary Public

My Commission Expires:  
July 25, 1982

RECEIVED  
STATE CORPORATION COMMISSION  
MAY 18 1981  
CONSERVATION DIVISION  
Wichita, Kansas