

STATE CORPORATION COMMISSION OF KANSAS
OIL & GAS CONSERVATION DIVISION

WELL COMPLETION OR RECOMPLETION FORM
ACO-1 WELL HISTORY

DESCRIPTION OF WELL AND LEASE

Operator: license # 9607
name Painter Oil Company
address 5865 Fairwood Lane
City/State/Zip Memphis, Tennessee 38119

Operator Contact Person Jerry Hardsaw
Phone 913-242-5332

Contractor: license # 6807
name Oil Drillers and Developers

Wellsite Geologist none
Phone
PURCHASER Square Deal Oil Company, Inc.

Designate Type of Completion
 New Well Re-Entry Workover

Oil SWD Temp Abd
 Gas Inj Delayed Comp.
 Dry Other (Core, Water Supply etc.)

If OWWO: old well info as follows:
Operator
Well Name
Comp. Date Old Total Depth

WELL HISTORY

Drilling Method: Mud Rotary Air Rotary Cable
9/19/84 9/21/84
Spud Date Date Reached TD Completion Date

780
Total Depth PBTD

Amount of Surface Pipe Set and Cemented at feet

Multiple Stage Cementing Collar Used? Yes No

If Yes, Show Depth Set feet

If alternate 2 completion, cement circulated
from feet depth to w/ SX cmt

API NO. 15-059-23,711 -00-00
County Franklin
SW SE NW SE 28
NW Sec 25 Twp 15 Rge 20
1485-1185 Ft North from Southeast Corner of Section
18 15-2605 Ft West from Southeast Corner of Section
(Note: locate well in section plat below)

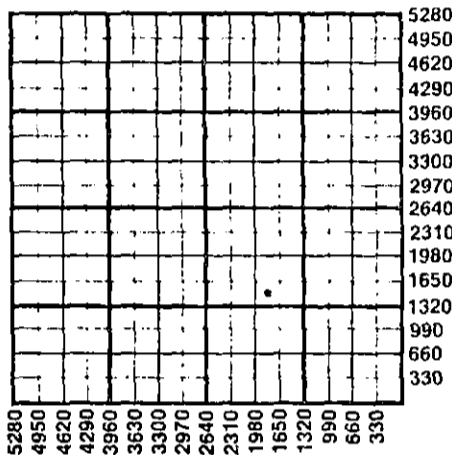
Lease Name Verna Dunn Well# 3

Field Name IN-field

Producing Formation First Squirrel

Elevation: Ground KB

Section Plat



KCC WICHITA
NOV 21 2017
RECEIVED

WATER SUPPLY INFORMATION

Source of Water:
Division of Water Resources Permit #

Groundwater Ft North From Southeast Corner and
(Well) Ft West From Southeast Corner of
Sec Twp Rge East West

Surface Water Ft North From Southeast Corner and
(Stream, Pond etc.) Ft West From Southeast Corner
Sec Twp Rge East West

Other (explain)
(purchased from city, R.W.D.#)

Disposition of Produced Water: Disposal Repressuring
Docket #

INSTRUCTIONS: This form shall be completed in duplicate and filed with the Kansas Corporation Commission, 200 Colorado Derby Building, Wichita, Kansas 67202, within 90 days after completion or recompletion of any well. Rules 82-3-130 and 82-3-107 apply.

Information on side two of this form will be held confidential for a period of 12 months if requested in writing and submitted with the form. See rule 82-3-107 for confidentiality in excess of 12 months.

One copy of all wireline logs and drillers time log shall be attached with this form. Submit CP-4 form with all plugged wells. Submit CP-111 form with all temporarily abandoned wells.

All requirements of the statutes, rules, and regulations promulgated to regulate the oil and gas industry have been fully complied with and the statements herein are complete and correct to the best of my knowledge.

Signature Max Painter
Title President Date

Subscribed and sworn to before me this day of 19

Notary Public
Date Commission Expires

K.C.C. OFFICE USE ONLY
F Letter of Confidentiality Attached
C Wireline Log Received
C Drillers Timelog Received
Distribution
 KCC SWD/Rep NGPA
 KGS Plug Other
(Specify)
11-22-2017

SIDE TWO

Operator Name Painter Oil Company Lease Name DUNN Well# 3 SEC 28 TWP. 15 RGE. 20 East West

WELL LOG

INSTRUCTIONS: Show important tops and base of formations penetrated. Detail all cores. Report all drill stem tests giving interval tested, time tool open and closed, flowing and shut-in pressures, whether shut-in pressure reached static level, hydrostatic pressures, bottom hole temperature, fluid recovery, and flow rates if gas to surface during test. Attach extra sheet if more space is needed. Attach copy of log.

Drill Stem Tests Taken Yes No
 Samples Sent to Geological Survey Yes No
 Cores Taken Yes No

Formation Description
 Log Sample

Topsoil & clay	0'	40'
shale	40'	83'
lime	83'	88'
shale	88'	99'
lime	99'	109'
shale	109'	118'
lime	118'	125'
shale	125'	129'
lime	129'	146'
shale	146'	174'
lime	174'	195'
shale	195'	275'
lime	275'	294'
shale	294'	295'
lime	295'	297'
shale	297'	302'
lime	302'	303'
shale	303'	320'
lime	320'	328'
shale	328'	352'
lime	352'	361'
shale	361'	379'
lime	379'	388'
shale	388'	390'
lime	390'	405'
shale	405'	412'
lime	412'	436'
shale	436'	439'
lime	439'	443'
shale	443'	446'
lime broken	446'	456'
shale	456'	621'
lime	621'	630'
shale	630'	669'

Name	Top	Bottom
lime	669'	673'
shale	673'	683'
lime	683'	689'
shale	689'	699'
ft. scott lime	699'	705'
shale	705'	716'
lmt. sand	716'	718'
sandy shale	718'	719'
sand no show		
good odor	719'	723'
sandy shale	723'	730'
shale	730'	780'

KCC WICHITA
 NOV 21 2017
 RECEIVED

CASING RECORD new used

Report all strings set - conductor, surface, intermediate, production, etc.

Purpose of string	size hole drilled	size casing set (in O.D.)	weight lbs/ft.	setting depth	type of cement	# sacks used	type and percent additives
surface	9 1/8"	6 1/8"		779' 40' / 779'	portland	65 1/5 / 65	2% gel

PERFORATION RECORD

Acid, Fracture, Shot, Cement Squeeze Record

shots per foot	specify footage of each interval perforated	(amount and kind of material used)	Depth
4	712-722		

TUBING RECORD

size set at packer at Liner Run Yes No

Date of First Production Producing method flowing pumping gas lift Other (explain)

Estimated Production Per 24 Hours	Oil Bbls	Gas MCF	Water Bbls	Gas-Oil Ratio CFPB	Gravity

METHOD OF COMPLETION

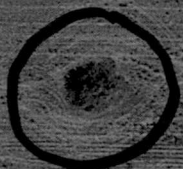
PRODUCTION INTERVAL

Disposition of gas: vented open hole perforation
 sold other (specify) _____
 used on lease Dually Completed.
 Commingled

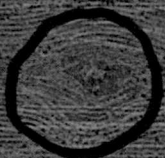
Verna Dunn Lease

N/2 SE/4 S28-T15-R20E Franklin Co.

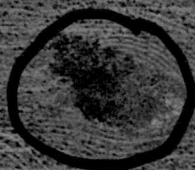
Legend



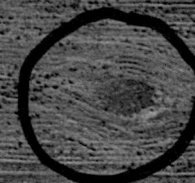
#4



#1



#2



#3

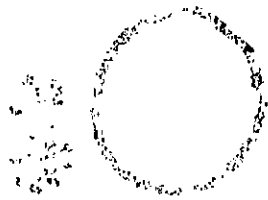
Google Earth

© 2017 Google



N

300 ft



KCC WICHITA
NOV 21 2017
RECEIVED

