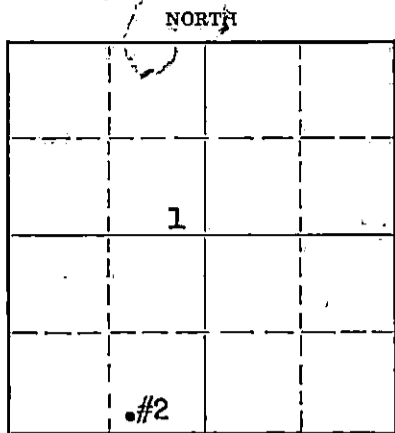


WELL PLUGGING RECORD

Give All Information Completely
Make Required Affidavit
Mail or Deliver Report to:
Conservation Division
State Corporation Commission
800 Bitting Building
Wichita, Kansas

Pawnee County, Sec. 1 Twp. 20 Rge. (E) 16(W)
Location as "NE/CNW/SW" or footage from lines SW SE SW
Lease Owner Magnolia Petroleum Company
Lease Name A. E. Erickson Well No. 2
Office Address P. O. Box 770, Great Bend, Kansas
Character of Well (completed as Oil, Gas or Dry Hole) Oil
Date well completed 7 - 3 19 58
Application for plugging filed 7 - 18 19 58
Application for plugging approved 7 - 21 19 58
Plugging commenced 10 - 13 19 58
Plugging completed 10 - 15 19 58
Reason for abandonment of well or producing formation Not economical to produce



Locate well correctly on above Section Plat

If a producing well is abandoned, date of last production 9 - 19 19 58
Was permission obtained from the Conservation Division or its agents before plugging was commenced? Yes

Name of Conservation Agent who supervised plugging of this well Frank Broadfoot, St. John, Kansas
Producing formation Arbuckle Depth to top 3681 Bottom 3737 Total Depth of Well 3737 Feet
Show depth and thickness of all water, oil and gas formations.

OIL, GAS OR WATER RECORDS

CASING RECORD

Formation	Content	From	To	Size	Put In	Pulled Out
Arbuckle	Oil & Water	3681	3737	8-5/8"	1000	None
				5-1/2"	3732	2629

Describe in detail the manner in which the well was plugged, indicating where the mud fluid was placed and the method or methods used in introducing it into the hole. If cement or other plugs were used, state the character of same and depth placed, from _____ feet to _____ feet for each plug set.

Plugged back w/sand 3737 to 3720'. Dumped 5 sx cement from 3720 to 3680'. Shot 5-1/2" csg @ 2611. Heavy mud 3680 to 300'. Rock bridge 300 to 290'. 20 sx cement 290-230'. Mud 230-35'. Rock bridge 35-25'. 10 sx cement 25' to base of cellar. Welded steel cap over csg. Filled to surface w/dirt. P & A 10-15-58.

(If additional description is necessary, use BACK of this sheet)

Name of Plugging Contractor Ace Pipe Pulling Co.
Address P. O. Box 304, Great Bend, Kansas

STATE OF Kansas COUNTY OF Barton, ss.
J. T. Rosenberger (employee of owner) or (owner or operator) of the above-described well,

being first duly sworn on oath, says: That I have knowledge of the facts, statements, and matters herein contained and the log of the above-described well as filed and that the same are true and correct. So help me God.

STATE CORPORATION COMMISSION

(Signature) J. T. Rosenberger

P. O. Box 770, Great Bend, Kansas
(Address)

OCT 18 1958

SUBSCRIBED AND SWORN to before me this 17th day of

October 19 58

Wichita, Kansas

Harriett S. Kaiser
Notary Public.

My commission expires January 14, 1961

PLUGGING
FILE SEC. 1 T. 20 R. 16W
BOOK PAGE 116 LINE 38

15.145.19077.0000

X-1416

Record of Well No. 2

Owned by MAGNOLIA PETROLEUM CO.

A. E. Erickson Farm Lawrence County Kansas State
 SW 28 2W Section 1-20S-16W
 District Chase

Rig Commenced	5	22	46	Campbell Drilling Company do	Contractor Contractor
Rig Completed	5	23	46		
Drilling Commenced	5	23	46		
Drilling Completed	7	6	46		
Terminated					

Kind	Put In		Pulled		Left In		REMARKS
	Ft.	In.	Ft.	In.	Ft.	In.	
8-5/8" 28# 8Tnd. #1 & 2 Lapweld casing	1001	-			1001	-	Cem. w/425 Sx
5 1/2" 14# 8Tnd. 35# Seamless New	3732	-			3732	-	Cas. w/200 Sx
2 1/2" 6.5# 10 Tnd. #2 Seamless	3735				3735		

Transfer in No. 5252 Our No.
 Estimated Oil Production Bbls Gas Cu. Ft.
 Voucher No.

FORMATION	TOP	BOTTOM	REMARKS
cellar	0	8	Conglomerate 3665 3681
clay	8	15	Top Arbuckle 3681
shale & shells	15	65	Arbuckle lime 3681 3732
sand	65	85	5 1/2" Csg. set 3732
shale & shells	85	150	
shale & sand	150	205	Standardized
sand	205	555	
shale & shells	555	785	Drilled plug & c/o to 3732
Red Bed	785	875	Swabbed to bottom then swabbed 35 Bbl. oil in 4 hours off bottom thru casing - no water.
shale & shells	875	989	Arbuckle line 3732 3737
Top Anhydrite	989	1001	Acidized 500 gals
8-5/8" Csg. set	1001		Flowed 15 Bbl. oil per hour thru 51/64 choke for 8 hours after load back - no water.
shale & shells	1001	1250	Physical Flowing Potential of 337 Bbl. oil - 0.5 Bbl. water per day. - Actual capacity - Effective 7/3/46.
shale & shells	1250	1405	
Salt W shale	1405	1505	
shale & shells	1505	1800	
lime & shale	1800	2120	
sandy lime	2120	2185	1D:SLM 3737
lime & shale	2185	2430	
Red Rock, shale, & lime	2430	2630	Hole Surveys
shale & lime	2630	2675	
shale	2675	2675	O.K. 1500 - 2000 - 2500 - 3000
lime & shale	2675	2675	
shale	2675	2777	
shale & lime	2777	2777	Acidification Record
lime	2777	2965	
shale - dark	2965	2995	
lime	2995	3011	Acidized by HOWCO. on 6/29/46 w/500 gals. thru 2 1/2" tubing. Max. Used 50 Bbl. oil. Max. pressure 450#. Finished 50#.
Cherty lime	3011	3015	
lime & shale	3015	3130	
Broken lime	3130	3195	
Broken lime & shale	3195		
Broken lime	3195		
lime	3195		
shale	3195	3245	
lime	3245	3370	
shale	3370	3370	
Top Lansing	3370		
lime	3370	3462	
shale	3462	3475	
lime	3475	3505	
lime & shale	3505	3515	
lime	3515	3615	
shale	3615	3615	

RECEIVED
 STATE CORPORATION COMMISSION
 JUL 19 1958
 CONSERVATION DIVISION

15.145.19077.0000

There are no shows above the Lansing. The only show noted by sample examination in the Lansing-Kansas City section is at 3414-19 D.P., where an oolitic zone developed fair to good porosity with a little spotted stain. It is not worth testing.

Samples below 3615, where a fishing job occurred, are so bad no evaluation could be made of the lower Pennsylvanian or upper Arbuckle.

RECEIVED
DIVISION OF MINES
JUL 19 1950
CONSERVATION DIVISION
Wichita, Kansas

