

WELL PLUGGING RECORD

Give All Information Completely  
Make Required Affidavit  
Mail or Deliver Report to:  
Conservation Division  
State Corporation Commission  
800 Easting Building  
Wichita, Kansas

Barton

County, Sec. 7 Twp. 20S Rge. (E) 15 (W)

Location as "NE/CNW&SWK" or footage from lines Center N/2, of NW/4 of SW/4

Lease Owner Amerada Petroleum Corp.

Lease Name J. J. Unruh Well No. 2

Office Address Box 2040 Tulsa 2, Oklahoma

Character of Well (completed as Oil, Gas or Dry Hole) Oil Well.

Date well completed March 22, 1946

Application for plugging filed July 23, 1953

Application for plugging approved July 24, 1953

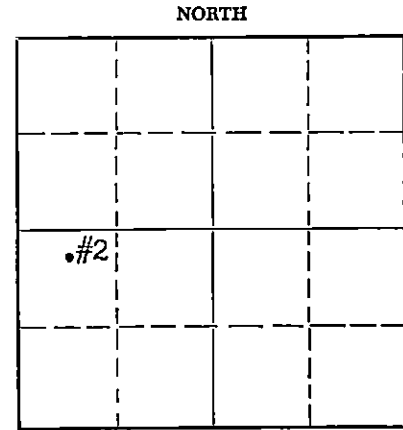
Plugging commenced Aug. 8, 1953

Plugging completed Aug. 11, 1953

Reason for abandonment of well or producing formation Unprofitable to Operate.

If a producing well is abandoned, date of last production June 12, 1953

Was permission obtained from the Conservation Division or its agents before plugging was commenced? Yes



Locate well correctly on above Section Plat

Name of Conservation Agent who supervised plugging of this well C. D. Stough - Great Bend, Kansas.

Producing formation Arbuckle Lime Depth to top \_\_\_\_\_ Bottom \_\_\_\_\_ Total Depth of Well 3786' Feet

Show depth and thickness of all water, oil and gas formations.

PBD - 3753'

OIL, GAS OR WATER RECORDS

CASING RECORD

FORMATION	CONTENT	FROM	TO	SIZE	PUT IN	PULLED OUT
				8-5/8"	1044'	None.
				5 1/2"	3778'	2513'

Describe in detail the manner in which the well was plugged, indicating where the mud fluid was placed and the method or methods used in introducing it into the hole. If cement or other plugs were used, state the character of same and depth placed, from \_\_\_\_\_ feet to \_\_\_\_\_ feet for each plug set.

Plugged back with crushed rock from 3753' to 3725', mixed & dumped in 5 sacks regular cement from 3725' to 3690'. Filled hole with heavy mud, mixed and pumped in 30 sacks aquagel, mixed and pumped in 100 sacks of regular cement filling hole to top of 8-5/8" OD Surface casing in bottom of cellar. Well plugged and abandoned 8/11/53 as required by State Plugger Mr. C. D. Stough of Great Bend, Kansas.

(If additional description is necessary, use BACK of this sheet)

Name of Plugging Contractor Forbes Casing Pulling Co.

Address Great Bend, Kansas

STATE OF Oklahoma COUNTY OF Tulsa, ss.

R. A. Drake (employee of owner) or (owner or operator) of the above-described well, being first duly sworn on oath, says: That I have knowledge of the facts, statements, and matters herein contained and the log of the above-described well as filed and that the same are true and correct. So help me God.

(Signature) R. A. Drake

SUBSCRIBED AND SWORN TO before me this 19<sup>th</sup> day of August, 1953

(Address)

Atwintown

My commission expires January 17, 1955

Notary Public.

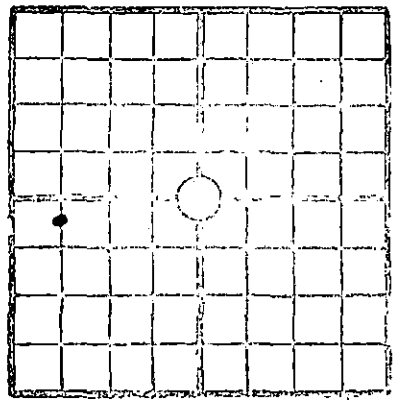
**PLUGGING**  
FILE SEC 2 T 20 R 154  
BOOK PAGE 117 LINE 14

24-7366-6 3-53-20M

RECEIVED  
STATE CORPORATION COMMISSION

AUG 21 1953

CONSERVATION DIVISION  
Wichita, Kansas



Well No. 2  
 Farm: Jacob J. Unruh  
 Location: Sec. 7-203-15W, Barton Co., Kansas  
 Company: Amerada Petroleum Corporation & Stanolind Oil & Gas Company

Elevation: 2029'  
 Commenced Drilling: 2-28-46  
 Completed Drilling: 3-17-46  
 Completed: 3-22-46  
 Contractor: Glenn W. Peel  
 Initial Prod: 320 bbls. oil, no water, flowed 24 hours  
 (5 hrs. thru 1/2" choke, 19 hrs. thru 1/4" choke)

CASING RECORD:	SIZE	WEIGHT	FEET	REMARKS
	8-5/8"	25.55#	1044	400 Sx. Cement
	5-1/2"	14 & 15#	3778	150 " "
	2" tbg.		3756	

FORMATION:

Clay	0	63	Line	3506	3533
Shale & shells	63	103	"	3533	3548
Sand	103	115	Soft line	3548	3552
Shale & shells	115	271	Line	3552	3655
Sand	271	294	Broken line & shale	3655	3673
Shale & shells	294	327	Conglomerate	3673	3681
Shale & shells	327	434	Arbuckle Dolomite	3681	3785 TD
Sand	434	567			
Shale	567	612			
Sand, & shale strks	612	705			3763 DOD
Sand & shale	705	740			
Shale & shells	740	835			
Sand	835	855			
Shale	855	955			
Shale & shells	955	1032			
Anhydrite	1032	1046			
"	1046	1069			
Shale & shells	1069	1275			
"	1275	1518			
Salt	1518	1523			
Salt & shale	1523	1705			
Salt	1705	1778			
Broken Anhydrite & shale	1778	1825			
Shale & lime	1825	1928			
Broken lime & cherty strks	1928	2028			
Lime	2028	2033			
Broken lime & shale	2033	2143			
Lime	2143	2165			
"	2165	2216			
Broken lime	2216	2287			
Lime	2287	2347			
Broken lime & shale	2347	2394			
Lime & shale	2394	2552			
Shale	2552	2572			
Broken lime & shale	2572	2650			
Broken lime	2650	2663			
Lime	2663	2690			
Shale & lime	2690	2714			
Broken lime & shale	2714	2790			
Lime	2790	2805			
Lime & shale	2805	2886			
Broken lime & shale	2886	2970			
Lime	2970	2995			
Broken lime	2995	3020			
Lime & shale	3020	3050			
Broken lime & shale	3050	3103			
Lime w/ cherty strks	3103	3182			
Broken lime & shale	3182	3217			
Lime	3217	3362			
Lime & shale	3362	3394			
Shale w/ lime strks	3394	3421			
Shale	3421	3426			
Lime	3426	3476			
Cherty lime	3476	3506			

PERFORATIONS:

Perforated 5 1/2" casing 3760-3759' with 3 shots

GEOLOGICAL TOPS

Lansing	3410'
Conglomerate	3671
Arbuckle	3681

**PLUGGING**  
 WEL SEC 7-20-15W  
 BLOCK FACE 117 LINE 14

**RECEIVED**  
 STATE CORPORATION COMMISSION  
 JUL 24 1953  
 CONSERVATION DIVISION  
 Wichita, Kansas