

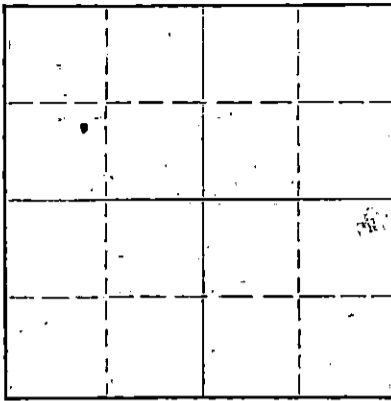
Give Information Completely
Make Required Affidavit
Mail or Deliver Report to:
Conservation Division
State Corporation Commission
212 North Market, Insurance Bldg.
Wichita, Kansas

WELL PLUGGING RECORD

Barton County, Sec. 10 Twp. 20 Rge. 12 (E) (W)

Location as "NE/CNW/SW" or footage from lines NE SW NW
Lease Owner Chas. Hulme Drilling Contractor
Lease Name Vida Strong Well No. 1
Office Address P.O. Box 836, Great Bend, Kansas
Character of Well (completed as Oil, Gas or Dry Hole) Dry Hole
Date well completed 11-24 1961
Application for plugging filed 11-24 1961
Application for plugging approved 11-24 1961
Plugging commenced 11-24 1961
Plugging completed 11-24 1961
Reason for abandonment of well or producing formation _____

NORTH



Locate well correctly on above Section Flat

If a producing well is abandoned, date of last production _____ 19____
Was permission obtained from the Conservation Division or its agents before plugging was commenced? Yes

Name of Conservation Agent who supervised plugging of this well Harold Hollis
Producing formation _____ Depth to top _____ Bottom _____ Total Depth of Well _____ Feet
Show depth and thickness of all water, oil and gas formations.

OIL, GAS OR WATER RECORDS

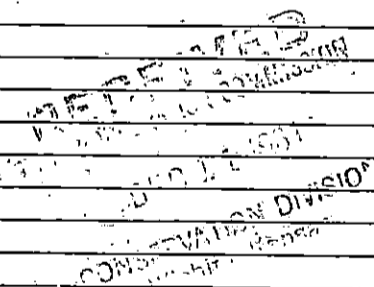
CASING RECORD

FORMATION	CONTENT	FROM	TO	SIZE	PUT IN	PULLED OUT
Surface Pipe		0	202'	8 5/8	202'	0

Describe in detail the manner in which the well was plugged, indicating where the mud fluid was placed and the method or methods used in introducing it into the hole. If cement or other plugs were used, state the character of same and depth placed, from _____ feet to _____ feet for each plug set.

Set first plug at 200'. 20 sacks of cement filled with mud to 40'. Set plug. Filled hole with cement to surface.

12-11-61



(If additional description is necessary, use BACK of this sheet)

Name of Plugging Contractor Chas. Hulme Drilling Contractor
Address P.O. Box 836, Great Bend, Kansas

STATE OF Kansas, COUNTY OF Barton, ss.
C. E. Byars, Partner (employee of owner) or (owner or operator) of the above-described well, being first duly sworn on oath, says: That I have knowledge of the facts, statements, and matters herein contained and the log of the above-described well as filed and that the same are true and correct. So help me God.

(Signature) C. E. Byars
P. O. Box 836, Great Bend, Kansas
(Address)

SUBSCRIBED AND SWORN to before me this 7th day of December, 1961

My commission expires 4-27-65

[Signature]
Notary Public.

CHAS. HULME DRILLING CONTRACTOR
P. O. Box 836
Great Bend, Kansas

Vida Strong # 1

NE SW NW 10-20-12

Barton County, Kansas

0	-	202	Surface Clay	Elevation	1812'	DF
202	-	605	Blue Clay & Red Bed		1815'	RB
605	-	620	Anhydrite	Anhydrite	605'	
620	-	800	Shale & Shells	Brown Lime	3124'	-1309'
800	-	1205	Shale	Kansas City	3138'	-1323'
1285	-	1515	Shale & Lime	Conglomerate	3377'	-1562'
1515	-	1960	Lime	Arbuckle	3402'	-1587'
1960	-	2290	Shale & Lime			
2290	-	2455	Shale & Shells			
2455	-	2727	Lime & Shale			
2727	-	3030	Lime			
3030	-	3145	Shale & Lime			
3145	-	3450	Lime			
3450	-		Rotary T.D.			

8" set at 202' and cemented with 200 sacks cement, 2% C.C.

DST # 1

Packer set at 3404'. T.D. 3424'. Open 30 minutes. Slight blow for 22 minutes. Recovered 15' mud. 171 lbs. BHP.

DST # 2

Packer set at 3425'. T.D. 3450'. Open 1 hour. Slight blow through entire test. Recovered 60' muddy water. No show of oil. BHP 876 lbs.

Set first plug at 200'. 20 sacks of cement filled with mud to 40'. Set plug. Filled hole with cement to surface.

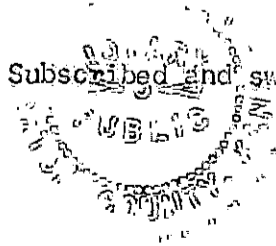
D & A

STATE OF KANSAS
COUNTY OF BARTON ss

Virgil E. Belford, Jr., employee of Chas. Hulme Drilling Contractor being first duly sworn on oath says: That I have knowledge of the facts, statement, and matters herein contained and the log of the above described well as filed and that the same are true and correct.

Virgil E. Belford, Jr.
Virgil E. Belford, Jr.

Subscribed and sworn before me this 8th day of December, 1961.



Jean Kimber
Notary Public Barton County

My Commission Expires: 12-3-63