

ORIGINAL

RELEASED

STATE CORPORATION COMMISSION OF KANSAS
OIL & GAS CONSERVATION DIVISION
WELL COMPLETION OR RECOMPLETION FORM
ACO-1 WELL HISTORY
DESCRIPTION OF WELL AND LEASE

API NO. 15-187-20,462-00-00-1.8.1991

County Stanton FROM CONFIDENTIAL
C NE SE Sec 5 Twp 30S Rge 42 East
X West

Operator: License # 04782
Name Ensign Operating Co.
Address 621 17th St., Suite 1800
City/State/Zip Denver, CO 80293

1980 Ft North from Southeast Corner of Section
660 Ft West from Southeast Corner of Section
(Note: Locate well in section plat below)

Purchaser

Lease Name Hoopingarner Well # 1-5

Operator Contact Person Larry Hartnett
Phone 303-293-9999

Field Name

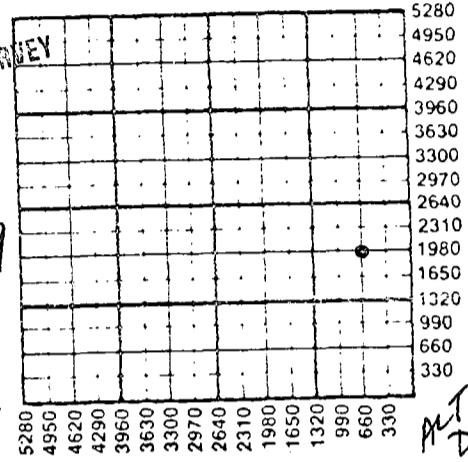
Producing Formation

Elevation: Ground 3526' KB 3539'

Contractor: License # 5107
Name H-30 Drilling, Inc.

Section Plat

Wellsite Geologist Wes Lilley
Phone (303) 771-9626



Designate Type of Completion
X New Well Re-Entry Workover
Oil Gas Dry
SWD Inj Other (Core, Water Supply etc.)
Temp Abd Delayed
If OWO: old well info as follows:

KANSAS GEOLOGICAL SURVEY
WICHITA BRANCH
RECEIVED
NOV 15 1989
KANSAS CORPORATION COMMISSION
OIL & GAS CONSERVATION DIVISION
WICHITA, KANSAS

Operator
Well Name
Comp. Date Old Total Depth

WATER SUPPLY INFORMATION

Disposition of Produced Water: Disposal
Docket # Repressuring

WELL HISTORY

Drilling Method: X Mud Rotary Air Rotary Cable

Questions on this portion of the ACO-1 call:

Water Resources Board (913) 296-3717

Source of Water: Division of Water Resources Permit # 89-461

10-2-89 10-11-89 10-12-89
Spud Date Date Reached TD Completion Date
5700' PBDT
Total Depth

X Groundwater 2040 Ft North from Southeast Corner
(Well) 825 Ft West from Southeast Corner of
Sec 5 Twp 30S Rge 42 East X West

Amount of Surface Pipe Set and Cemented at 1537 feet
Multiple Stage Cementing Collar Used? Yes X No
If yes, show depth set feet
If alternate 2 completion, cement circulated
from feet depth to w/SX cmt
Cement Company Name
Invoice #

Surface Water Ft North from Southeast Corner
(Stream, pond etc) Ft West from Southeast Corner
Sec Twp Rge East West

Other (explain) (purchased from city, R.W.D. #)

INSTRUCTIONS: This form shall be completed in duplicate and filed with the Kansas Corporation Commission, 200 Colorado Derby Building, Wichita, Kansas 67202, within 90 days after completion or recompletion of any well. Rule 82-3-130 and 82-3-107 apply. Information on side two of this form will be held confidential for a period of 12 months if requested in writing and submitted with the form. See rule 82-3-107 for confidentiality in excess of 12 months. One copy of all wireline logs and drillers time log shall be attached with this form. Submit CP-4 form with all plugged wells. Submit CP-111 form with all temporarily abandoned wells.

All requirements of the statutes, rules and regulations promulgated to regulate the oil and gas industry have been fully complied with and the statements herein are complete and correct to the best of my knowledge.

Signature Sam Hartnett

Title Manager, Operations Date 10/30/89

Subscribed and sworn to before me this day of 19

Notary Public

Date Commission Expires

K.C.C. OFFICE USE ONLY
Letter of Confidentiality Attached
Wireline Log Received
Drillers Timelog Received
Distribution
KCC SWD/Rep NGPA
KGS Plug Other
(Specify)

Operator Name Ensign Operating Co. Lease Name Hoopingarner Well # 1-5

Sec. 5 Twp. 30S Rge. 42 East West County Stanton

RELEASED

JAN 18 1991

WELL LOG

FROM CONFIDENTIAL

INSTRUCTIONS: Show important tops and base of formations penetrated. Detail all cores. Report all drill stem tests giving interval tested, time tool open and closed, flowing and shut-in pressures, whether shut-in pressure reached static level, hydrostatic pressures, bottom hole temperature, fluid recovery, and flow rates if gas to surface during test. Attach extra sheet if more space is needed. Attach copy of log.

Drill Stem Tests Taken [X] Yes [] No
Samples Sent to Geological Survey [X] Yes [] No
Cores Taken [] Yes [X] No

Formation Description [X] Log [X] Sample

DST #1: 5606-35', St. Louis; 30, 60, 30, 60.
Initial Opn - Weak blow built to 2-3/4# @ 30 min; 2nd Opn - no blow, fush tool, no blow.
Recovery: 180' DM
Pressures: HP 2777-2457
FP 67-90, 157-157
SIP 1173-1117
BHT 127
Sampler: 500 ML mud, 3000 ML wtr, 110 psi.

Table with 3 columns: Name, Top, Bottom. Rows include Shale and Red Bed, Red Bed and Sand, Red Bed, Shale and Lime, Lime and Anhydrite, Shale and Lime, Sand and Shale, Shale and Lime, Shale, and Rotary Total Depth.

Log Tops table with 4 columns: Log Name, Depth, Log Name, Depth. Includes Base Stone Corral, Herrington, Winfield, Council Grove, Wabaunsee, Topeka, Heebner, Toronto, Lansing, Marmaton, Morrow Sh, Middle Morrow, Middle, Morrow, Middle, Morrow, St. Gen., St. Louis, LTD.

CASING RECORD [X] New [] Used LTD 5699'
Report all strings set-conductor, surface, intermediate, production, etc.

Table with 8 columns: Purpose of String, Size Hole Drilled, Size Casing Set (in O.D.), Weight Lbs/Ft., Setting Depth, Type of Cement, #Sacks Used, Type and Percent Additives. Row 1: Surface, 12-1/4", 8-5/8", 24#, 1537', Lite Wt., 440, 2% cc.

PERFORATION RECORD table with 2 columns: Shots Per Foot, Specify Footage of Each Interval Perforated. Acid, Fracture, Shot, Cement Squeeze Record (Amount and Kind of Material Used) Depth.

TUBING RECORD Size Set At Packer at Liner Run [] Yes [] No

Date of First Production Producing Method [] Flowing [] Pumping [] Gas Lift [] Other (explain).....

Table with 5 columns: Oil, Gas, Water, Gas-Oil Ratio, Gravity. Row 1: Estimated Production Per 24 Hours, Bbls, MCF, Bbls, CFPB.

METHOD OF COMPLETION Production Interval

Disposition of gas: [] Vented [] Sold [] Used on Lease [] Open Hole [] Perforation [X] Other (Specify) ..Dry..... [] Dually Completed [] Commingled