

WELL PLUGGING RECORD

Give All Information Completely
Make Required Affidavit
Mail or Deliver Report to:
Conservation Division
State Corporation Commission
211 No. Broadway
Wichita, Kansas

Barton

County. Sec. 1 Twp. 20S Rge. (E) 11 (W)

Location as "NE/CNW/SW" or footage from lines SE NE NW

Lease Owner Magnolia Petroleum Company

Lease Name Meda Steckel Well No. 3

Office Address Box 770, Great Bend, Kansas

Character of Well (completed as Oil, Gas or Dry Hole) Oil

Date well completed 4 - 24 19 36

Application for plugging filed 8 - 10 19 59

Application for plugging approved 8 - 11 19 59

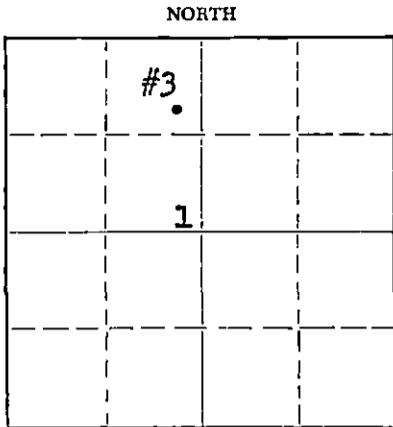
Plugging commenced 8 - 19 19 59

Plugging completed 8 - 25 19 59

Reason for abandonment of well or producing formation No workover possibilities; not needed for secondary recovery or disposal use.

If a producing well is abandoned, date of last production 5 - 6 19 59

Was permission obtained from the Conservation Division or its agents before plugging was commenced? Yes



Locate well correctly on above Section Flat

Name of Conservation Agent who supervised plugging of this well Don Truan, 634 Sunset, Russell, Kansas

Producing formation Arbuckle Depth to top 3281 Bottom Unknown Total Depth of Well 3288 Feet

Show depth and thickness of all water, oil and gas formations.

OIL, GAS OR WATER RECORDS

CASING RECORD

FORMATION	CONTENT	FROM	TO	SIZE	PUT IN	PULLED OUT
Arbuckle	Oil & Water	3281	3288	12-1/2"	203'	None
				7"	3278'	2270'

Describe in detail the manner in which the well was plugged, indicating where the mud fluid was placed and the method or methods used in introducing it into the hole. If cement or other plugs were used, state the character of same and depth placed, from _____ feet to _____ feet for each plug set.

Plugged back w/sd 3288' to 3260'; dumped 5 sx cmnt 3260 to 3235'; mud 3235' to 220'; set 10' rock bridge 220' to 210'; dump 40 sx cmnt 210' to 158'; mud 158' to 36'; set 10' rock bridge 36' to 26'; dumped 20 sx cmnt 26' to base of cellar; filled to surf w/dirt.

RECEIVED
STATE CORPORATION COMMISSION

AUG 31 1959

CONSERVATION DIVISION
Wichita, Kansas

(If additional description is necessary, use BACK of this sheet)

Name of Plugging Contractor Ace Pipe Pulling Co.

Address Box 304, Great Bend, Kansas

STATE OF KANSAS, COUNTY OF BARTON, ss.

C. O. Turner (employee of owner) or (~~owner or operator~~) of the above-described well, being first duly sworn on oath, says: That I have knowledge of the facts, statements, and matters herein contained and the log of the above-described well as filed and that the same are true and correct. So help me God.

(Signature) C. O. Turner

Box 770, Great Bend, Kansas
(Address)

SUBSCRIBED AND SWORN TO before me this 28th day of August, 1959

Reva C. Brown
Notary Public.

My commission expires January 15, 1963

PLUGGING
FILE SEC. 1 T. 20 R. 14
BOOK PAGE 59 LINE 4

15.009.14239.0000

Record of Well No. 3

Owned by MAGNOLIA PETROLEUM CO.

Meda Steckel

Loc. Barton County Kansas State
 38 NE NW Sec. 1-203-11W
 Dism. Chase, Kansas

Rig Commenced	Mar.	28	1936		
Rig Completed	Mar.	29	1936	Keith Rig Co.	Contractor
Drilling Commenced	Mar.	31	1936	Parker Drilling Company	Contractor
Drilling Completed	Apr.	24	1936		
Expended					

Kind	Put In		Pulled		Left In		REMARKS
	Fr.	In.	Fr.	In.	Fr.	In.	
12-1/2" 40# Lapweld	203		0		203		Cemented w/200 Sacks
7" CD 24# Seamless	3278		0		3278		Cemented w/250 Sacks

RECEIVED
 STATE CORPORATION COMMISSION

AUG 11 1959

CONSERVATION DIVISION
 Wichita, Kansas

Transfer in No. 5506 Our No.
 Estimated Oil Production 1465 Bbls. Pot. Ga. Cu. Ft.
 Voucher No.

FORMATION	TOP	BOTTOM	REMARKS
cellar	0	9	
water sand	9	40	
shale & shells	90	130	
sticky shale & shells	130	204	
12-1/2" Csg. Set		203	
shale & shells	204	995	8-1/3 Hrs. 100' & Circulation
salt	995	1065	
salt shale	1065	1248	1/2 Day 100' & Circulation
shale	1248	1300	
lime broken	1300	1455	1/3 Day 100' & Circulation
lime	1455	1520	Tuning & R...
shale & lime	1520	1610	
sand & lime	1610	1690	1-1/2 Day 100' & Circulation
shale	1690	1728	
shale & shells	1728	1910	1-6-1/4" & Circulation
lime broken	1910	1950	
sticky shale	1950	1980	
shale & shells	1980	2070	
shale	2070	2190	
shale & lime shells	2190	2285	
shale & shells	2285	2370	
shale	2370	2455	Geological Notes by A. L. Morrow
shale & lime shells	2455	2560	3060-70 Very small trace. Poor
shale & shells	2560	2603	
lime	2603	2885	
sticky shale	2885	2993	
shale & shells	2993	2958	
shale	2958	3020	
lime	3020	3053	
lime & shale	3053	3118	
lime	3118	3272	
shale & shells	3272	3277	
Top of Arbuckle	3277		
Cored-lime	3277	3281	
7" CD Csg. Set		3278	
Standardized Arbuckle Line	3281	3288	
Total Depth		3288	

PLUGGING
 FILE SEC. 1 T20 R11W
 BOOK PAGE 59 LINE 4