

CORRECTED

TYPE OR PRINT

NOTICE OF INTENTION TO DRILL

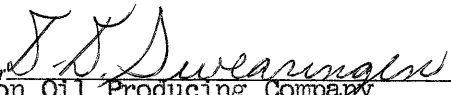
C-1

15-153-20,095-00-00

TO BE FILED WITH THE STATE CORPORATION COMMISSION PRIOR TO COMMENCEMENT OF WELL

1. Operator Halliburton Oil Producing Company Address 117 Cameron Bldg., Oklahoma City, Oklahoma
2. Lease name Dozbaba Well No. 3 County Rawlins 73106
3. Well Location 150' NW of C-NE NW Sec. 22 Township 1S Range 34W
4. Well to be drilled 554 ft. from nearest lease line.
5. Drilling Contractor Gabbert-Jones, Inc. Address Wichita, Kansas
6. Type of equipment: Rotary Cable Tool Approx. date operation to begin 4-24 -70 196__.
7. Well to be drilled for Oil Gas Disposal Input Estimated Total Depth of Well 4350 ft.
8. Depth of deepest fresh water well within one mile of location None ft. If none exists, write NONE_____.
9. Ground elevation at location is approx. _____ ft. higher or _____ ft. lower than ground elevation at water well.
10. Depth of the deepest municipal water well within three miles of location None ft. If none exists, write NONE_____.
11. Operator states that he will set surface pipe at least 25 ft. below all Tertiary or unconsolidated deposits and, taking into consideration differences in ground elevations, that the minimum depth necessary, to the best of his knowledge and belief, to protect all fresh water zones is 100 ft. and operator agrees to set surface pipe at this location to a depth of not less than 300 ft. Alternate 1 Alternate 2

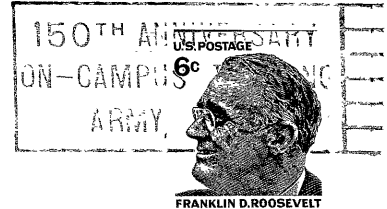
REMARKS:


 Signature of Operator J. S. Swearingin
 For Halliburton Oil Producing Company

32-2559-519A



2-68-25M



**State Corporation Commission of Kansas
Conservation Division
500 Insurance Building
212 North Market
Wichita, Kansas 67202**

**RECEIVED
STATE CORPORATION COMMISSION
APR 23 1970
CONSERVATION DIVISION
Wichita, Kansas**

(IF PREFERRED, MAIL IN ENVELOPE)