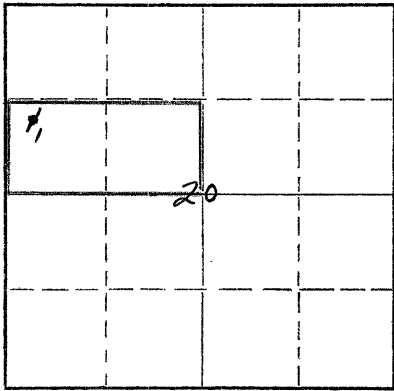


Give All Information Completely
Make Required Affidavit
Mail or Deliver Report to:
Conservation Division
State Corporation Commission
211 No. Broadway
Wichita, Kansas

NORTH



Locate well correctly on above
Section Plat

Rawlins County, Sec. 20 Twp. 1S Rge. (E) 34 (W)
Location as "NE/CNW/SW" or footage from lines NW/4 SW/4 NW/4
Lease Owner **Skelly Oil Company**
Lease Name **H. A. Garver** Well No. **1**
Office Address **Box 1650, Tulsa, Oklahoma**
Character of Well (completed as Oil, Gas or Dry Hole) **Dry Hole**
Date well completed **August 13, 19 59**
Application for plugging filed **August 13, 19 59**
Application for plugging approved **August 17, 19 59**
Plugging commenced **August 13, 19 59**
Plugging completed **August 14, 19 59**
Reason for abandonment of well or producing formation **Dry Hole**

If a producing well is abandoned, date of last production _____ 19____
Was permission obtained from the Conservation Division or its agents before plugging was commenced? **Yes**

Name of Conservation Agent who supervised plugging of this well **Mr. A. D. Fabricius**
Producing formation **None** Depth to top _____ Bottom _____ Total Depth of Well **4400** Feet
Show depth and thickness of all water, oil and gas formations.

OIL, GAS OR WATER RECORDS

CASING RECORD

FORMATION	CONTENT	FROM	TO	OD SIZE	PUT IN	PULLED OUT
Lansing-Kans. City	Dry	4107'		8-5/8"	445'0"	None

Describe in detail the manner in which the well was plugged, indicating where the mud fluid was placed and the method or methods used in introducing it into the hole. If cement or other plugs were used, state the character of same and depth placed, from _____ feet to _____ feet for each plug set.

Mud laden fluid	4400' to 4100'
25 sacks of cement	4100' to 4020'
Mud laden fluid	4020' to 600'
Wood plug	600'
20 sacks of cement	600' to 540'
Mud laden fluid	540' to 430'
Wood plug	430'
20 sacks of cement	430' to 375'
Mud laden fluid	375' to 40'
Wood plug	40'
10 sacks of cement	40' to 6'
Surface soil	6' to 0'

RECEIVED
STATE CORPORATION COMMISSION

AUG 31 1959

CONSERVATION DIVISION
Wichita, Kansas

Name of Plugging Contractor **Sterling Drilling Company**
Address **Sterling, Kansas**

STATE OF **Kansas** COUNTY OF **Reno**, ss.
H. E. Wamsley (employee of owner) or (owner) of the above-described

well, being first duly sworn on oath, says: That I have knowledge of the facts, statements, and matters herein contained and the log of the above-described well as filed and that the same are true and correct. So help me God.

(Signature) _____

Box 391, Hutchinson, Kansas
(Address)

SUBSCRIBED AND SWORN TO before me this **27th** day of **August**, 19 **59**

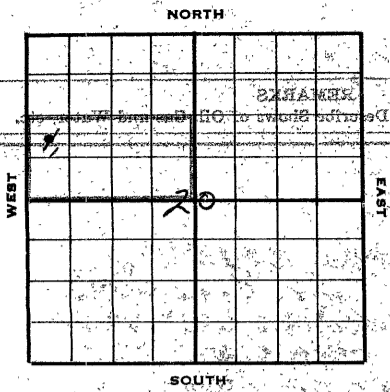
My commission expires **April 7, 1963**

Joseph L. Johnson
Notary Public.

PLUGGING
FILE SEC. **20** T. **1** R. **34**
BOOK PAGE **60** LINE **6**

15-153-05186-00-00

SKELLY OIL COMPANY



Well Record

Lease Name and No. E. A. Carter Well No. 1 Elev. 1195'

Lease Description 5/2 NW/4 Section 20-13-34N,
Rawlins County, Kansas (80 Acres)

Location made July 31, 19 59 by F. E. Mullen

feet from North line _____ feet from East line 200'

feet from South line 330' feet from West line 330' of Sec. 20

Work com'd 7/31 19 59 Rig com'd 8/1 19 59 Drlg. com'd 8/1 19 59 Drlg. comp'd 8/13 19 59

Rig Contractor Sterling Drilling Company

Drilling Contractor Sterling Drilling Company, Sterling, Kansas

Rotary Drilling from 0' to 4400' Cable Tool Drilling from _____ to _____

Commenced Producing INT HOLE 19 _____

Initial Prod. before shot or acid _____ Bbls.

Initial Prod. after shot or acid _____ Bbls.

Dry Gas Well Press. _____ Volume _____ Cu. ft.

Casing Head Gas Pressure _____ Volume _____ Cu. ft.

Braden Head (_____) Gas Pressure _____ Volume _____ Cu. ft.

Braden Head (_____) Gas Pressure _____ Volume _____ Cu. ft.

PRODUCING FORMATION INT HOLE (Name) Top _____ Bottom _____ TOTAL DEPTH 4400'

CASING RECORD

CD	Size	Wt.	Thds.	Where Set	PULLED OUT			LEFT IN			KIND	Cond'n	CEMENTING	
					Jts.	Feet	In.	Jts.	Feet	In.			Sacks Used	Method Employed
	6-5/8"	22.7	25	450'				11	440'	0	Armed On A		300	Ballston
<i>(6-5/8" casing cut off 5' below ground level)</i>														

RECEIVED
STATE CORPORATION COMMISSION
AUG 31 1959
CONSERVATION DIVISION
Wichita, Kansas

Liner Set at _____ Length _____ Perforated at _____

Liner Set at _____ Length _____ Perforated at _____

Packer Set at _____ Size and Kind _____

Packer Set at _____ Size and Kind _____

SHOT OR ACID TREATMENT RECORD

	FIRST	SECOND	THIRD	FOURTH
Date				
Acid Used				
Size Shot				
Shot Between	Ft. and Ft.	Ft. and Ft.	Ft. and Ft.	Ft. and Ft.
Size of Shell				
Put in by (Co.)				
Length anchor				
Distance below Cas'g				
Damage to Casing or Casing Shoulder				

SIGNIFICANT GEOLOGICAL FORMATIONS

NAME	Top	Bottom	GAS		OIL		REMARKS
			From	To	From	To	
Council Grove	3460'						
Topeka Limestone	3921'						
Reokner Shale	4051'						
Leavenworth	4058'						
Lansing Limestone	4307'						
Harmon	4377'						

CLEANING OUT RECORDS

	DATE COMMENCED	DATE COMPLETED	PROD. BEFORE	PROD. AFTER	REMARKS
1st					See Reverse for other details.
2nd					" " " " "
3rd					" " " " "
4th					" " " " "

PLUGGING BACK AND DEEPENING RECORDS

	Date Commenced	Date Completed	No. Feet Plugged Back or Deepened	Prod. Before	Prod. After	REMARKS
1st						See Reverse for other details.
2nd						" " " " "
3rd						" " " " "
4th						" " " " "

(See Reverse for Record of Formation)

RECORD OF FORMATIONS

FORMATION	TOP	BOTTOM	REMARKS
Surface soil, shale and sand	0	230	Set and cemented 8-5/8" O.D., 22.7% Aruco S.W., S.I. steel casing (A cond.) at 450' with 300 sacks of cement and 25 calcium chloride. Cement circulated. Finished cementing at 7:30 am 8/2/59.
Shale	230	455	
Shale	455	1450	TOP FORMER GENERAL 3043' TOP FORMER GENERAL 3082' TOP FORMER GENERAL 3120' TOP FORMER 3911' TOP FORMER 4054' TOP FORMER 4082' TOP FORMER LINE 4107' Poor porosity, poor spotted dark stain
Shale and sand	1450	2520	
Shale	2520	2850	
Anhydrite	2850	2865	
Shale and red bed	2865	2890	
Shale	2890	3035	
Line	3035	3075	
Shale	3075	3200	
Shale and line	3200	3570	
Line	3570	3645	
Shale and line	3645	4055	Poor to fair porosity, poor spotted dark stain
Line	4055	4104	
Line	4104	4119	
Line	4119	4123	Poor to fair porosity, poor spotted dark stain Van Halliburton drill stem test No. 1, packer set at 4105', used 35' anchor, open 1 hour, weak blow dead in 4 minutes, recovered 8" of mud, no oil, IMP-1355' in 30 mins, IFF-0', FFF-20', FMP-1110' in 30 mins.
Sand	4123	4131	
Line and sand	4131	4140	
Line and shale	4140	4212	Poor porosity, spotted stain Van Halliburton drill stem test No. 2, packer set at 4135', used 49' anchor, open 1 hour, weak blow, dead in 4 minutes, recovered 5" of rotary mud, no oil, IMP-350', 30 mins., IFF-0', FFF-0', FMP-0' in 30 minutes.
Line	4212	4230	
Line	4230	4235	
Line	4235	4261	Poor to fair spotted pinpoint to vuggy porosity, fair spotted brown stain
Line, cream to buff, finely crystalline	4261	4267	
Line	4267	4274	
Line, cream to buff, finely crystalline	4274	4276	Poor pinpoint porosity, poor spotted black stain Van Halliburton drill stem test No. 3, packer set at 4250', used 32' anchor, open 2 hours, weak blow throughout, recovered 1" of oil, 410' of salt water, IMP-1350' in 30 minutes, IFF-20', FFF-150', FMP-1315' in 30 minutes.
Line	4276	4282	
Line, cream, finely crystalline, poor, very spotted porosity, trace of poor stain	4282	4294	
Line	4294	4299	Van Halliburton drill stem test No. 4, packer set at 4278', used 42' anchor, open 1 hour, weak blow dead in 4 minutes, recovered 10" rotary mud, no oil, IMP-530' in 30 minutes, IFF-0', FFF-45', FMP-450' in 30 mins.
Line	4299	4320	
Line	4320	4338	
Line, light gray, finely crystalline	4338	4351	Non-porous, no shows Van Halliburton drill stem test No. 5, packer set at 4322', used 30' anchor, open 1 hour, weak blow dead in 1 minute, recovered 3" of rotary mud, IMP-300', IFF-0', FFF-0', FMP-25' in 30 minutes.
Line	4351	4352	
Line	4352		

lime and shale

4352 4400

BASE KANSAS CITY 4365*
IN JANUARY 1971
Van Schilling Survey

TOTAL DEPTH 4400*

Total Depth Reached: 8/13/59

Since no commercial oil or gas production was encountered in drilling to the total depth of 4400*, regular authority was granted to plug and abandon the well.

Plugged the well as follows:

Mud laden fluid	4100*	to	4100*
25 sacks of cement	4100*	to	4020*
Mud laden fluid	4020*	to	600*
Wood plug			600*
20 sacks of cement	600*	to	540*
Mud laden fluid	540*	to	430*
Wood plug			430*
20 sacks of cement	430*	to	375*
Mud laden fluid	375*	to	40*
Wood plug			40*
10 sacks of cement	40*	to	0*
Surface soil	0*	to	0*

15-153-05186-00-00

Plugged and abandoned August 14, 1959.

SLICE TEST DATA	
DEPTH	ANGLE OF INCLINATION
100*	1 degree
125*	3/4 "
1000*	0 "
1500*	1/2 "
2000*	3/4 "
2500*	1 "
3000*	1 "
3500*	3/4 "

RECEIVED
STATE CORPORATION COMMISSION
AUG 31 1959
CONSERVATION DIVISION
Wichita, Kansas

BOOK PAGE 2 LINE 2
LIFE 280 301 7 11300
PLUGGING

RECEIVED
STATE CORPORATION COMMISSION
AUG 31 1959
CONSERVATION DIVISION
Wichita, Kansas

PLUGGING
FILE SEC. 301 / R340
BOOK PAGE 6 LINE 6