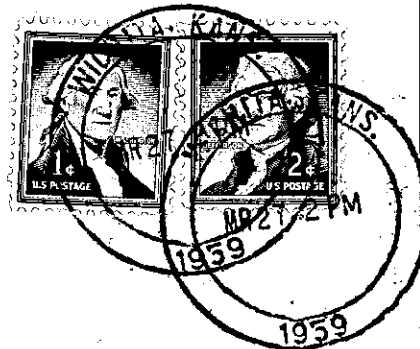


15-135-00141-0000  
 NOTICE OF INTENTION TO DRILL

## TO BE FILED WITH THE STATE CORPORATION COMMISSION PRIOR TO COMMENCEMENT OF WELL

1. Operator OSAGE OIL & GAS CO., INC. Address Petroleum Bldg. Wichita, Kansas.
2. Lease name FORDENO Well No. 1 County NESS
3. Well Location CW/2 NW SE Sec. 19 Township 20S Range 24W
4. Well to be drilled 330 ft. from nearest lease line.
5. Drilling Contractor NATIONAL DRILLING CO. Address 533 Petroleum Bldg. Wichita, Kansas
6. Type of equipment: Rotary  Cable Tool  Approx. date operation to begin MARCH 24 1959
7. Well to be drilled for Oil  Gas  Disposal  Input  Estimated Total Depth of Well 4600 ft. OK
8. Depth of deepest fresh water well within one mile of location 50 ft. If none exist, write NONE
9. Ground elevation at location is approx. \_\_\_\_\_ ft. higher or \_\_\_\_\_ ft. lower than ground elevation at water well.
10. Depth of the deepest municipal water well within three miles of location None ft. If none exist, write NONE
11. Operator states that he will set surface pipe at least 25 ft. below all Tertiary or unconsolidated deposits and, taking into consideration differences in ground elevations, that the minimum depth necessary, to the best of his knowledge and belief, to protect all fresh water zones is 150 ft. and operator agrees to set surface pipe at this location to a depth of not less than 200 ft. Alternate 1  Alternate 2 . In the event the well is dry, plugging will conform
- REMARKS: to all regulations sufficient to protect fresh water. In the event of commercial production, cementing by DV tool will be used to **Osage Oil & Gas Co., Inc.** completely protect fresh waters.

Signature of Operator *[Signature]*



**State Corporation Commission of Kansas  
Conservation Division  
500 Insurance Building  
212 North Market  
Wichita 2, Kansas**

**RECEIVED**  
STATE CORPORATION COMMISSION

**MAR 28 1959**

**CONSERVATION DIVISION  
Wichita, Kansas**

**(IF PREFERRED, MAIL IN ENVELOPE)**