

5/12/89

ORIGINAL

SIDE ONE

RELEASED

STATE CORPORATION COMMISSION OF KANSAS
OIL & GAS CONSERVATION DIVISION
WELL COMPLETION OR RECOMPLETION FORM
ACO-1 WELL HISTORY
DESCRIPTION OF WELL AND LEASE

S

API NO. 15-15-007-22231-00-00 OCT 8 1990

County... BARBER FROM CONFIDENTIAL

S/2. NE.. SE... Sec. 4... Twp. 30S. Rge. 13W. X West

1650 Ft North from Southeast Corner of Section
660 Ft West from Southeast Corner of Section
(Note: Locate well in section plat below)

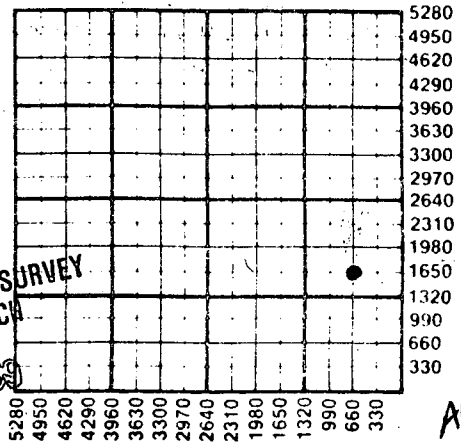
Lease Name... RHEA FISHER Well #... 2-4

Field Name... JEM

Producing Formation... MARMATON

Elevation: Ground... 1854 KB... 1863

Section Plat



KANSAS GEOLOGICAL SURVEY
WICHITA BRANCH
MAY 18 1989

ALT 1
10-8-90

WATER SUPPLY INFORMATION

Disposition of Produced Water: Disposal
Docket # ... NA Repressuring

Questions on this portion of the ACO-1 call:
Water Resources Board (913) 296-3717

Source of Water:
Division of Water Resources Permit #.....

Groundwater.....Ft North from Southeast Corner
(Well)Ft West from Southeast Corner of
Sec Twp Rge East West

Surface Water.....Ft North from Southeast Corner
(Stream, pond etc).....Ft West from Southeast Corner
Sec Twp Rge East West

Other (explain).....
(purchased from city, R.W.D. #)

Operator: License # 5650
Name F. G. HOLL
Address 6427 E. KELLOGG
City/State/Zip WICHITA KS. 67207

Purchaser... PERMIAN

Operator Contact Person ELWYN NAGEL
Phone 316-684-8481

Contractor: License # 5142
Name STERLING DRILLING CO.

Wellsite Geologist FRANKLIN GREENBAUM
Phone 316-684-8481

Designate Type of Completion
 New Well Re-Entry Workover
 Oil SWD Temp Abd
 Gas Inj Delayed Comp.
 Dry Other (Core, Water Supply etc.)

If OWO: old well info as follows:
Operator
Well Name
Comp. Date Old Total Depth.....

WELL HISTORY

Drilling Method:
 Mud Rotary Air Rotary Cable

3-20-89..... 4-2-89..... 4-19-89.....
Spud Date Date Reached TD Completion Date

4725!..... 4686.....
Total Depth PBTD

Amount of Surface Pipe Set and Cemented at 248! feet
Multiple Stage Cementing Collar Used? Yes No
If yes, show depth set.....feet
If alternate 2 completion, cement circulated
from.....feet depth to.....w/.....SX cmt
Cement Company Name
Invoice #

INSTRUCTIONS: This form shall be completed in triplicate and filed with the Kansas Corporation Commission, 200 Colorado Derby Building, Wichita, Kansas 67202, within 120 days of the spud date of any well. Rule 82-3-130, 82-3-107 and 82-3-106 apply.
Information on side two of this form will be held confidential for a period of 12 months if requested in writing and submitted with the form. See rule 82-3-107 for confidentiality in excess of 12 months.
One copy of all wireline logs and drillers time log shall be attached with this form. Submit CP-4 form with all plugged wells. Submit CP-111 form with all temporarily abandoned wells.

All requirements of the statutes, rules and regulations promulgated to regulate the oil and gas industry have been fully complied with and the statements herein are complete and correct to the best of my knowledge.

Signature Elwyn Nagel
Title Manager Date 5-12-89

Subscribed and sworn to before me this 12th day of May 1989.
Notary Public Margery Nagel
Date Commission Expires.....

MARGERY NAGEL
NOTARY PUBLIC
STATE OF KANSAS
My Appt. Exp. 3/2/93

K.C.C. OFFICE USE ONLY
 Letter of Confidentiality Attached
 Wireline Log Received
 Drillers Timelog Received
Distribution
KCC SWD/Rep NGPA
Plug Other (Specify)
MAY 12 1989
KANSAS CORPORATION COMMISSION
CONSERVATION DIVISION
Wichita, Kansas
Form ACO-1 (5-86)

Sec 4 Twp 30 Rge 13 W

P1

ORIGINAL

Operator Name F.G. HOLL Lease Name RHEA-FISHER Well # 2-4

Sec. 4 Twp. 30S Rge. 13W County BARBER

RELEASED

OCT 8 1990

WELL LOG

INSTRUCTIONS: Show important tops and base of formations penetrated. Detail all cores. Report all drill stem tests giving interval tested, time tool open and closed, flowing and shut-in pressures, whether shut-in pressure reached static level, hydrostatic pressures, bottom hole temperature, fluid recovery, and flow rates if gas to surface during test. Attach extra sheet if more space is needed. Attach copy of log.

FROM CONFIDENTIAL

Drill Stem Tests Taken [x] Yes [] No
Samples Sent to Geological Survey [x] Yes [] No
Cores Taken [] Yes [] No

Formation Description [x] Log [] Sample

DST #1 4230-4274
Opened with good blow, increased to strong blow on 2nd open. GTS on 2nd open gauges. 1.5 cu. ft. increased to 5 cu. ft. at end of 2nd open.
Rec. 65' GCM
30-60-60-90
IFP: 55-55
ISIP: 210
FFP: 55-55
FSIP: 1518

Table with 3 columns: Name, Top, Bottom. Lists formations like BROWN LIME, LANSING K.C., BASE K.C., MARMATON, CONGLOMERATE, MISSISSIPPIAN, KINDERHOOK, VIOLA, SIMPSON, SIMPSON SAND, ARBUCKLE, RTD, LTD with their respective top and bottom depths.

CASING RECORD, PERFORATION RECORD, TUBING RECORD, Date of First Production, Producing Method, Estimated Production. Includes fields for size of hole, casing, weight, setting depth, type of cement, and production details.

METHOD OF COMPLETION

Production Interval

Disposition of gas: [] Vented [] Sold [] Used on Lease [] Open Hole [x] Perforation [] Other (Specify) 4300-4307
[] Dually Completed [] Commingled

F. G. HOLL COMPANY

6427 EAST KELLOGG - P.O. BOX 780167
WICHITA, KS 67278-0167

ORIGINAL

DST# 2 4292-4316

GTS 4 minutes, opened with a strong blow.

In 5" 139 MCF	1135'	CGO
10" 137 MCF	125'	SIMG0, HVO & GCM
SI 60"		
10" 103 MCF	IFP	154-88
20" 81.6 MCF	ISIP	1649
30" 60.1 MCF	FFP	132-298
40" 89.8 MCF	FSIP	1649
50" 57.7 MCF		
60" 44.7 MCF		
70" 44.7 MCF		
80" 44.7 MCF		
90" 37.6 MCF		
100" 39.6 MCF		
110" 41.0 MCF		
120" 42.5 MCF		

RELEASED

OCT 8 1990

FROM CONFIDENTIAL

RECEIVED
STATE CORPORATION
REGISTRATION COMMISSION
MAY 1 9 1989
CONSERVATION DIVISION
Wichita, Kansas

DST# 3 4330-4395

GTS in 20 min.

IFP 77-66

ISIP 1452

FFP 66-66

FSIP 1507

75' GM w/SI show of oil

11 MCF after 30 min. in FF.

DST #4 4465-4490

30-60-60-90

Strong blow IF

GTS in 5 min. - 2nd opening

10" 11.3 MCF	IFP	66-66
20" 20.8 MCF	ISIP	1551
30" 21.9 MCF	FFP	77-77
40" 21.9 MCF	FSIP	1529
50" 21.3 MCF		
60" 20.8 MCF		

Rec. 160' fluid - 100' VSO & GCM (6% G, 2% O)

60' O & GCM (10% G, 22% O)

DST #5 4565-4600

Rec. 30' mud

Weak blow

30-60-30-60

IFP 55-55

ISIP 903

FFP 66-66

FSIP 717

Good shows in Simpson