

## NOTICE OF INTENTION TO DRILL

15-007-20,040-0000

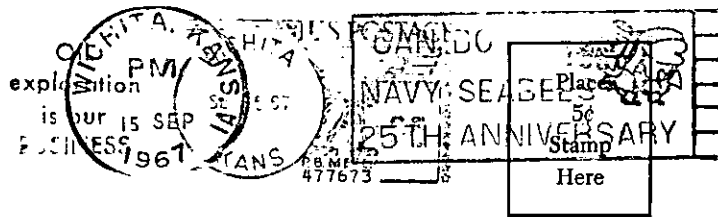
TO BE FILED WITH THE STATE CORPORATION COMMISSION PRIOR TO COMMENCEMENT OF WELL

1. Operator Bowers Drilling Company, Inc. Address 1434 Wichita Plaza, Wichita, Kansas
2. Lease name Staats Well No. 1 County Barber
3. Well Location App 180' W of C N/2 NE NE Sec. 2 Township 30S Range 14W
4. Well to be drilled 330 ft. from nearest lease line.
5. Drilling Contractor Bowers Drilling Company, Inc. Address 1434 Wichita Plaza, Wichita, Kansas
6. Type of equipment: Rotary  Cable Tool  Approx. date operation to begin September 18 1967.
7. Well to be drilled for Oil  Gas  Disposal  Input  Estimated Total Depth of Well 4600 ft.
8. Depth of deepest fresh water well within one mile of location \_\_\_\_\_ ft. If none exists, write NONE None.
9. Ground elevation at location is approx. \_\_\_\_\_ ft. higher or \_\_\_\_\_ ft. lower than ground elevation at water well.
10. Depth of the deepest municipal water well within three miles of location \_\_\_\_\_ ft. If none exists, write NONE None.
11. Operator states that he will set surface pipe at least 25 ft. below all Tertiary or unconsolidated deposits and, taking into consideration differences in ground elevations, that the minimum depth necessary, to the best of his knowledge and belief, to protect all fresh water zones is 200 ft. and operator agrees to set surface pipe at this location to a depth of not less than 300 ft. Alternate 1  Alternate 2

REMARKS:

Signature of Operator

Emil E. Bowers



**State Corporation Commission of Kansas**  
**Conservation Division**  
**500 Insurance Building**  
**212 North Market**  
**Wichita, Kansas 67202**

**RECEIVED**  
**STATE CORPORATION COMMISSION**  
**SEP 18 1967**  
**9-18-67**  
**CONSERVATION DIVISION**  
**Wichita, Kansas**

**(IF PREFERRED, MAIL IN ENVELOPE)**