

NOTICE OF INTENTION TO DRILL

TO BE FILED WITH THE STATE CORPORATION COMMISSION PRIOR TO COMMENCEMENT OF WELL

- 15-077-00267-00-00
- Operator Kern-Landes Expl. Co. Inc. Address Box 107, Liberal, Kansas
 - Lease name Schrock Well No. 1 County Harper
 - Well Location c SE NW Sec. 4 Township 35 S Range 6W
 - Well to be drilled 560 ft. from nearest lease line.
 - Drilling Contractor Bowers Heller Drilling Co. Inc. Address 1034 Union Center, Wichita, Kansas
 - Type of equipment: Rotary Cable Tool Approx. date operation to begin May 13 196 4
 - Well to be drilled for Oil Gas Disposal Input Estimated Total Depth of Well 5200 ft.
 - Depth of deepest fresh water well within one mile of location 18 ft. If none exists, write NONE _____.
 - Ground elevation at location is approx. _____ ft. higher or 20 ft. lower than ground elevation at water well.
 - Depth of the deepest municipal water well within three miles of location _____ ft. If none exists, write NONE
None
 - Operator states that he will set surface pipe at least 25 ft. below all Tertiary or unconsolidated deposits and, taking into consideration differences in ground elevations, that the minimum depth necessary, to the best of his knowledge and belief, to protect all fresh water zones is 130 ft. and operator agrees to set surface pipe at this location to a depth of not less than 280 ft. Alternate 1 Alternate 2 .

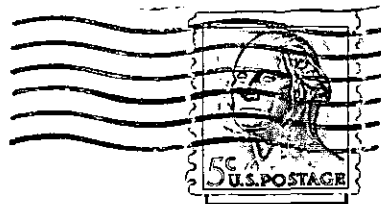
REMARKS: **If test well dry, hole will be plugged in accordance with Commission instructions.**

KERN-LANDES EXPLORATION CO. INC.

Signature of Operator By: _____

D. L. Heller
D. L. Heller





**State Corporation Commission of Kansas
Conservation Division
500 Insurance Building
212 North Market
Wichita 2, Kansas**

RECEIVED
STATE CORPORATION COMMISSION

MAY 14 1964

CONSERVATION DIVISION
Wichita, Kansas

(IF PREFERRED, MAIL IN ENVELOPE)