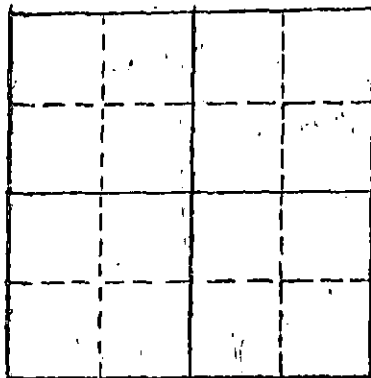


STATE OF KANSAS  
STATE CORPORATION COMMISSION

Form CP-1

File All Information Completely  
Make Required Affidavit  
Mail or Deliver Report to  
Conservation Division  
State Corporation Commission  
P. O. Box 17027  
Wichita, Kansas 67217

WELL PLUGGING RECORD



Locate well correctly on above  
Section Plat

Kingman County, Sec 26 Twp. 29 Rge. 7 (E) (W)  
Location as "NE/CNW/SE/SW" or footage from lines C NW SW  
Lease Owner Drillers Production Company  
Lease Name Reed #1 Well No. \_\_\_\_\_  
Office Address Wichita, Kansas 67202  
Character of Well (completed as Oil, Gas or Dry Hole) \_\_\_\_\_  
Date well completed \_\_\_\_\_ 19\_\_\_\_  
Application for plugging filed \_\_\_\_\_ 19\_\_\_\_  
Application for plugging approved \_\_\_\_\_ 19\_\_\_\_  
Plugging commenced 7/18/74 \_\_\_\_\_ 19\_\_\_\_  
Plugging completed 7/20/74 \_\_\_\_\_ 19\_\_\_\_  
Reason for abandonment of well or producing formation depleted.  
If a producing well is abandoned, date of last production \_\_\_\_\_ 19\_\_\_\_  
Was permission obtained from the Conservation Division or its agents before plugging was commenced? yes

Name of Conservation Agent who supervised plugging of this well Biberstein  
Producing formation \_\_\_\_\_ Depth to top \_\_\_\_\_ Bottom \_\_\_\_\_ Total Depth of Well 3000 Feet  
Show depth and thickness of all water, oil and gas formations.

OIL, GAS OR WATER RECORDS

CASING RECORD

FORMATION	CONTENT	FROM	TO	SIZE	PUT IN	PULLED OUT
				8-5/8	275	none
				4"	2196	997

Describe in detail the manner in which the well was plugged, indicating where the mud fluid was placed and the method or methods used in introducing it into the hole. If cement or other plugs were used, state the character of same and depth placed, from \_\_\_\_\_ feet to \_\_\_\_\_ feet for each plug set.

Checked bottom, ran sand to 2080' and dumped 5 sacks cement.  
Shot pipe at 1543', 1441', 1030', pulled 32 joints. Set 10'  
rook bridge at 360' and dumped 6 yards ready mix.

**PLUGGING COMPLETE.**

RECEIVED  
STATE CORPORATION COMMISSION  
JUL 29 1974  
CONSERVATION DIVISION  
Wichita, Kansas

Name of Plugging Contractor KNIGHT CASING PULLING CO., INC.  
Address CHASE, KANSAS

STATE OF KANSAS COUNTY OF RICE  
NOEL J. KNIGHT ss.

well, being first duly sworn on oath, says: That I have knowledge of the facts, statements, and matters herein contained and the log of the above-described well as filed and that the same are true and correct. So help me God.

(Signature) Noel Knight  
CHASE, KANSAS

Subscribed and Sworn to before me this 23rd day of July 1974

MARGARET MELCHER  
NOTARY PUBLIC  
Rice County, Kansas  
My Commission Expires  
Feb. 15, 1975

Margaret Melcher  
Notary Public.

15-095-20274-0000

RECEIVED  
STATE CORPORATION COMMISSION

KANSAS DRILLERS LOG

MAY 23 1974

S. 26 T. 29 R. 7 E W

Loc.: C NW/4 SW/4

API No. 15

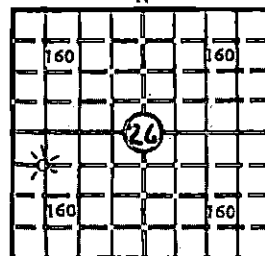
County

Number

CONSERVATION DIVISION

County Kingman

640 Acres  
N



Locate well correctly

Elev.: Gr.

DF KB 1531  
Gas

Operator  
Drillers Production Co., Inc. Wichita, Kansas

Address  
480 Fourth National Bank Building, Wichita, Kansas 67202

Well No. 1 Lease Name Reed

Footage Location  
660 feet from (N) line 660 feet from (W) line

Principal Contractor Triangle Drilling Co. Geologist Lee Poulsen

Spud Date April 18, 1972 Total Depth 3000 P.B.T.D. 2159

Date Completed May 1, 1972 Gas Purchaser: Peoples Division Northern Natural

CASING RECORD

Report of all strings set— surface, intermediate, production, etc.

Purpose of string	Size hole drilled	Size casing set (in O.D.)	Weight lbs./ft.	Setting depth	Type cement	Sacks	Type and percent additives
Surface pipe		8 5/8"		275	Portland	250	3% CaCl, 2% gel
Production	7 7/8"	4 1/2"		2196 1/2	Portland	100	none

LINER RECORD

PERFORATION RECORD

Top, ft.	Bottom, ft.	Sacks cement	Shots per ft.	Size & type	Depth interval
			1	Welex DP	2106 to 2119

TUBING RECORD

Size	Setting depth	Packer set at
2" EUE	2156	none

ACID, FRACTURE, SHOT, CEMENT SQUEEZE RECORD

Amount and kind of material used	Depth interval treated
250 gal MCA	2106 to 2119
1000 gal MCA + 100 gal alcohol	same
Frac: 10000# sand, 10000 gal. gelled water	same

INITIAL PRODUCTION

Date of first production May 2, 1972 Producing method (flowing, pumping, gas lift, etc.) flowing

RATE OF PRODUCTION PER 24 HOURS	Oil none	Gas 768 MCFPD	Water 75	Gas-oil ratio -
Disposition of gas (vented, used on lease or sold)	bbbls.	MCF	bbbls.	CFPB

Producing Interval (s) 2106 to 2119

INSTRUCTIONS: As provided in KCC Rule 82-2-125, within 90 days after completion of a well, one completed copy of this Drillers Log shall be transmitted to the State Geological Survey of Kansas, 4150 Monroe Street, Wichita, Kansas 67209. Copies of this form are available from the Conservation Division, State Corporation Commission, 3830 So. Meridian (P.O. Box 17027), Wichita, Kansas 66217. Phone AC 316-522-2206. If confidential custody is desired, please note Rule 82-2-125. Drillers Logs will be on open file in the Oil and Gas Division, State Geological Survey of Kansas, Lawrence, Kansas 66044.

Operator **Drillers Production Co., Inc.** DESIGNATE TYPE OF COMP.: OIL, GAS, DRY HOLE, SWDW, ETC.: **gas**

Well No. **1** Lease Name **Reed**

S 26 T 29 R 7 ~~W~~

**WELL LOG**

Show all important zones of porosity and contents thereof; cored intervals, and all drill-stem tests, including depth interval tested, cushion used, time tool open, flowing and shut-in pressures, and recoveries.

SHOW GEOLOGICAL MARKERS, LOGS RUN, OR OTHER DESCRIPTIVE INFORMATION.

FORMATION DESCRIPTION, CONTENTS, ETC.	TOP	BOTTOM	NAME	DEPTH
Admire	2034			
Indian Cave	2096			
Waubunsee	2140			
Tarkio	2282			
Elmont	2354			
Burlington	2428			
Howard	2554			
Topeka	2684			
TD	3000			
<p>DST No. 1      2100 - 2143            15" - 30" - 60" - 45"            GTS 6 min., 439 MCF, 7 min.            Stabilized at 943 MCFPD            Recovered 370 ft. of muddy water.            FP 75 - 208, IBHP 910, FBHP 891.</p>				

USE ADDITIONAL SHEETS, IF NECESSARY, TO COMPLETE WELL RECORD.

Date Received	Signature
	President
	Title
	May 22, 1974
	Date