

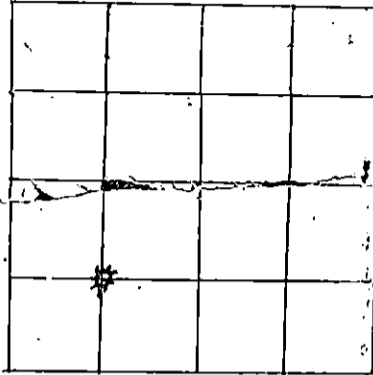
STATE OF KANSAS  
STATE CORPORATION COMMISSION  
200 Colorado Derby Bldg.  
Wichita, Kansas 67202

Form CP-4  
Rev. 12-15-80

WELL PLUGGING RECORD

Give All Information Completely  
Make Required Affidavit

COUNTY Morton SEC. 17 TWP. 33S RGE. 43W E/W  
Location as in quarters or footage from lines:  
C: SW



Locate Well  
correctly on above  
Section Platt.

Lease Owner Mapco Inc.  
Lease Name Oberly "B" Well No. 1  
Office Address P.O. Drawer S Tyrone, Oklahoma 73951  
Character of Well (Completed as Oil, Gas or Dry Hole): Gas  
Date Well Completed 11-18-54  
Application for plugging filed 10-19-81  
Plugging commenced 12-5-81  
Plugging completed 12-7-81  
Reason for abandonment of well or producing formation Well bore filled with mud and sand above production formations.  
Was permission obtained from the Conservation Division or it's Agent's before plugging was commenced? Yes

Name of Conservation Agent who supervised plugging of this well Clarence Thomas  
Producing formation Topeka Depth to top 3064 bottom 3078 T.D. 3290  
Show depth and thickness of all water, oil and gas formations.

OIL, GAS OR WATER RECORDS

Casing Record

Formation	Content	From	To	Size	Put in	Pulled Out
				8 5/8	370	none
Topeka	Gas	3064	3078	5 1/2	3290	1012

Describe in detail the manner in which the well was plugged, indicating where the mud fluid was placed and the method or methods used in introducing it into the hold. If cement or other plugs were used, state the character of same and depth placed, from \_\_\_\_\_ feet to \_\_\_\_\_ feet for each plug set.

CIBP set @ 2879 w/20' of cement  
Pump 65 sks. of cement from 365 to 265  
Put 10 sks. of cement from 40 to 0 Cut off & cap 8 5/8 3' below ground level

(If additional description is necessary, use BACK of this sheet)

Name of Plugging Contractor Sargents Casing Pulling Service Bbx 506 Liberal, Kansas 67901

STATE OF Oklahoma COUNTY OF Texas, ss.

Dean Teel (employee of owner) or (owner or operator) of the above-described well, being first duly sworn on oath, says: That I have knowledge of the facts, statements, and matters herein contained and the log of the above-described well as filed and that the same are true and correct. So help me God.

(Signature) Dean Teel  
Tyrone, Oklahoma 73951  
(Address)

SUBSCRIBED AND SWORN TO before me this 29th day of December, 1981

My Commission expires: 9-1-85

Janet R. Cooksey  
Notary Public

RECEIVED  
STATE CORPORATION COMMISSION  
DEC 30 1981

CONSERVATION DIVISION  
Wichita, Kansas



DRILLING COMPANY, INC. Forest 3-1279 357 N. BROADWAY WICHITA, KANSAS

Southwestern Exploration Company  
#1 Oberley "B"  
Approx. C SW/4 Sec. 17-33-43W  
Morton County, Kansas

Southwestern Exploration Company  
503 Union National Bank Building  
Wichita 2, Kansas

Elevation: 3651 R.B.  
Spudded: September 24, 1954  
Rotary Completed: September 30, 1954  
Contractor: Rocket Drilling Company, Inc.

CASING RECORD

370' 8-5/8" O.D. 24# Seamless casing cemented with 225 sacks cement.  
3290' 5-1/2" O.D. 14# Seamless casing cemented with 250 sacks cement.

DRILLERS LOG

Sand & Shells	0 to 300	Shale & Shells	1515
Shale	315	Shale, Shells, Red Bed & Sand-Lime Streaks	2000
Red Bed	690	Shale & Lime	2465
Red Bed & Anhydrite Streaks	980	Shale & Lime Streaks	2590
Salt & Shale	1230	Shale & Lime	3107
		Lime	3290 TD

STATE OF KANSAS )  
                          ) SS:  
COUNTY OF SEDGWICK)

RECEIVED  
STATE CORPORATION COMMISSION  
OCT 21 1954  
CONSERVATION DIVISION  
Wichita, Kansas

I hereby certify that to the best of my knowledge and belief, the foregoing log is true and correct.

ROCKET DRILLING COMPANY, INC.

*B. W. Burks*  
B. W. Burks

Subscribed and sworn to before me, a Notary Public, in and for the State and County aforesaid, this 7th day of October, 1954.

*Patricia M. ...*  
Notary Public

My Commission Expires: March 5, 1958