

TYPE

NOTICE OF INTENTION TO DRILL

C-1

TO BE FILED WITH THE STATE CORPORATION COMMISSION
PRIOR TO COMMENCEMENT OF WELL

API Number 15-185-20,524-000
 (For office use only)

1. Operator KANSAS PETROLEUM, INC.
500 Insurance Bldg.
 Address Wichita, Kansas 67202
2. Contractor D. R. Lauck Oil Company, Inc.
301 South Broadway
 Address Wichita, Kansas 67202
3. Type of Equipment: Rotary Cable Tool _____
4. Well to be Drilled for: Oil Gas _____
 Disposal _____ Input _____ Other _____
5. Depth of Deepest Fresh Water within 1 mile 70 ft.
6. Depth of Municipal Water Well within 3 miles unk. ft.
7. Depth to Protect all Fresh Water 150 ft.
8. Amount of Surface Casing to be set 300 ft.
9. Alternate No. 1 _____ No. 2

Starting Date 9 August 1974

County Stafford

Sec 23 Twp 23S S Rge 13 W

Spot Location C SE NE

Nearest Lease Line 660 ft.

Lease Name French

Well No. 1

Est. Total Depth 3,920 ft.

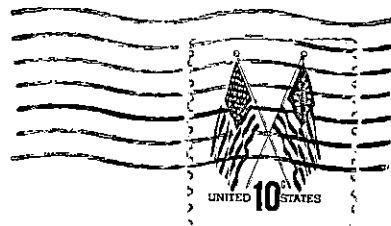
REMARKS:

OPERATOR STATES THAT HE WILL COMPLY WITH K. S. A. 55-128
 KANSAS PETROLEUM, INC.

Signature of Operator

James Tasheff
 James Tasheff, President





**State Corporation Commission of Kansas
Conservation Division
P. O. Box 17027
Wichita, Kansas 67217**

**RECEIVED
STATE CORPORATION COMMISSION
JUL 31 1974
CONSERVATION DIVISION
Wichita, Kansas**

(IF PREFERRED, MAIL IN ENVELOPE)