

STATE OF KANSAS  
STATE CORPORATION COMMISSION

Well Log not available

WELL PLUGGING RECORD

Give All Information Completely  
Make Required Affidavit  
Mail or Deliver Report to:  
Conservation Division  
State Corporation Commission  
211 No. Broadway  
Wichita, Kansas

Stafford County, Sec. 3 Twp. 22 Rge. 13 (X) W(W)

Location as "NE/CNW/SW" or footage from lines NW NW NW

Lease Owner: Petroleum, Inc.

Lease Name Gates "A" Well No. 2

Office Address Route 2, Great Bend, Kansas

Character of Well (completed as Oil, Gas or Dry Hole) Oil

Date well completed January 30 19 49

Application for plugging filed May 21 19 58

Application for plugging approved May 22 19 58

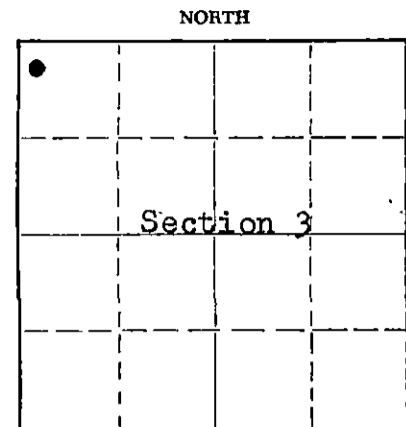
Plugging commenced May 26 19 58

Plugging completed June 4 19 58

Reason for abandonment of well or producing formation Depletion of  
producibile zones

If a producing well is abandoned, date of last production August 17 19 57

Was permission obtained from the Conservation Division or its agents before plugging was commenced? Yes



Locate well correctly on above Section Plat

Name of Conservation Agent who supervised plugging of this well Frank Broadfoot, St. John, Kansas -

Producing formation Arbuckle Depth to top 3746' Bottom -- Total Depth of Well 3756' Feet

Show depth and thickness of all water, oil and gas formations.

OIL, GAS OR WATER RECORDS

CASING RECORD

FORMATION	CONTENT	FROM	TO	SIZE	PUT IN	PULLED OUT
Arbuckle	Water & oil	3746'	3756'	8 5/8"	270'	none
Viola	Water & little oil	3660'	3670'	5 1/2"	3747'	1900'
Kansas City	Water & little oil	3572'	3576'			
Kansas City	Water	3560'	3568'			
Kansas City	Water	3514'	3520'			
		3534'	3544'			

Describe in detail the manner in which the well was plugged, indicating where the mud fluid was placed and the method or methods used in introducing it into the hole. If cement or other plugs were used, state the character of same and depth placed, from \_\_\_\_\_ feet to \_\_\_\_\_ feet for each plug set.

(Plugged back to 3554')

Filled hole with crushed rock from 3554' to 3500'. Placed 5 sacks cement on top of rock. Mud up to 264' and made solid rock bridge on top of mud. Placed 8 sacks cement on top of rock bridge; but cement would not set up. Globe Cementing Co. pumped 89 cu. ft. 50-50 stratacrete with 1 1/2 sacks gel to base of well cellar.

RECEIVED  
STATE CORPORATION COMMISSION

JUN 13 1958

6-13-58

CONSERVATION DIVISION  
Wichita, Kansas

(If additional description is necessary, use BACK of this sheet)

Name of Plugging Contractor Southwest Casing Pulling Co.

Address Box 364, Great Bend, Kansas.

STATE OF Kansas COUNTY OF Barton, ss.

Don Searle (employee of owner) or (owner or sponsor) of the above-described well, being first duly sworn on oath, says: That I have knowledge of the facts, statements, and matters herein contained and the log of the above-described well as filed and that the same are true and correct. So help me God.

(Signature) Don Searle

Route 2, Great Bend, Kansas  
(Address)

SUBSCRIBED AND SWORN TO before me this 11th day of June, 19 58

My commission expires July 11, 1960

John T. Brown  
Notary Public.

PLUGGING  
FILE SEC. 3 I.22 R.134  
BOOK PAGE \_\_\_\_\_ LINE \_\_\_\_\_