

## Richard Harper

---

**From:** Brent Bauters <bbauters@Meyer-Najem.com>  
**Sent:** Wednesday, June 04, 2014 8:51 AM  
**To:** Richard Harper  
**Subject:** Water Well Removal at 8900 Parallel Pkwy, Kansas City, KS  
**Attachments:** Water Well - 8900 Paralle Pkwy.pdf; C-02 Existing Conditions Plan 2014-05-06.pdf

Richard,

Thanks again for calling me back this morning regarding the water well located at 8900 Parallel Pkwy., Kansas City, KS 66112. The site of the well is SW QTR of SW Qtr Section 31, Township 10 South; Range 24 E, Latitude 39 deg 7 min 45 sec, Longitude -94 deg, 47 min, 11 sec. Site drawing with approximate well location is attached.

The existing well is dry and has an approximate depth of 10'-0". At the location of the well the new subgrade will be 12'-0" below existing grade, or 2'-0" below the bottom of the well (See attached drawing for reference). As discussed, since the well is being removed in its entirety, no further action or documentation will be required and this email shall serve as record of removal. Thanks again for your help with getting this issue resolved.

Best Regards,



**Brent Bauters**

Project Manager

office: 317.577.0007 | mobile: 317.557.4961

[www.meyer-najem.com](http://www.meyer-najem.com)

BUILDING VALUE. BUILDING SOLUTIONS.

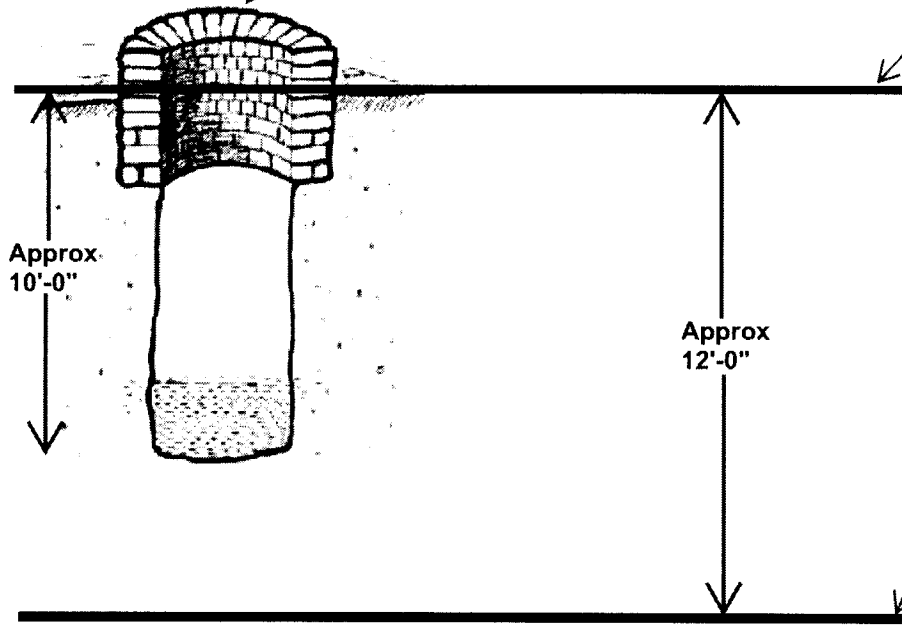
---

This message (and any associated files) is intended only for the use of the individual or entity to which it is addressed and may contain information that is confidential, subject to copyright or constitutes a trade secret. If you are not the intended recipient you are hereby notified that any dissemination, copying or distribution of this message, or files associated with this message, is strictly prohibited. Internet communications cannot be guaranteed to be secure or error-free as information could be intercepted, corrupted, lost, destroyed, arrive late or incomplete, or contain viruses. Therefore, we do not accept responsibility for any errors or omissions that are present in this message, or any attachment, that have arisen as a result of e-mail transmission. Any views or opinions presented are solely those of the author and do not necessarily represent those of the company.

A handwritten signature in blue ink, appearing to read "Brent Bauters".

Well located at 8900 Parallel  
Parkway, Kansas City, KS

Existing Grade



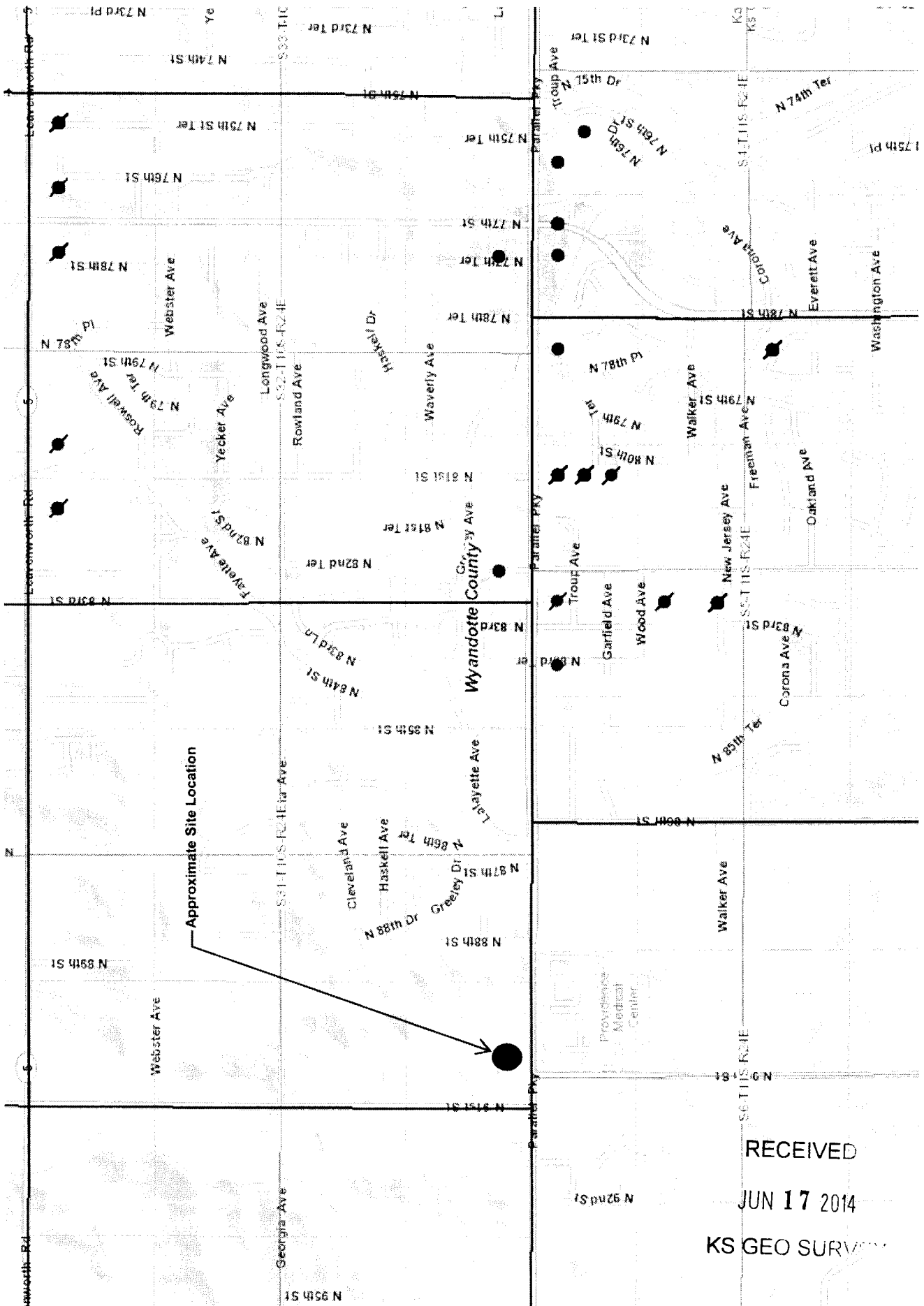
Approx  
10'-0"

Approx  
12'-0"

New Subgrade

### Kansas Water Wells

Statewide View | Zoom to Location | Filter Wells | Label Wells | Classify Wells | Download Wells | Print to PDF | Clear Highlight | Help



RECEIVED  
JUN 17 2014  
KS GEO SURVEY

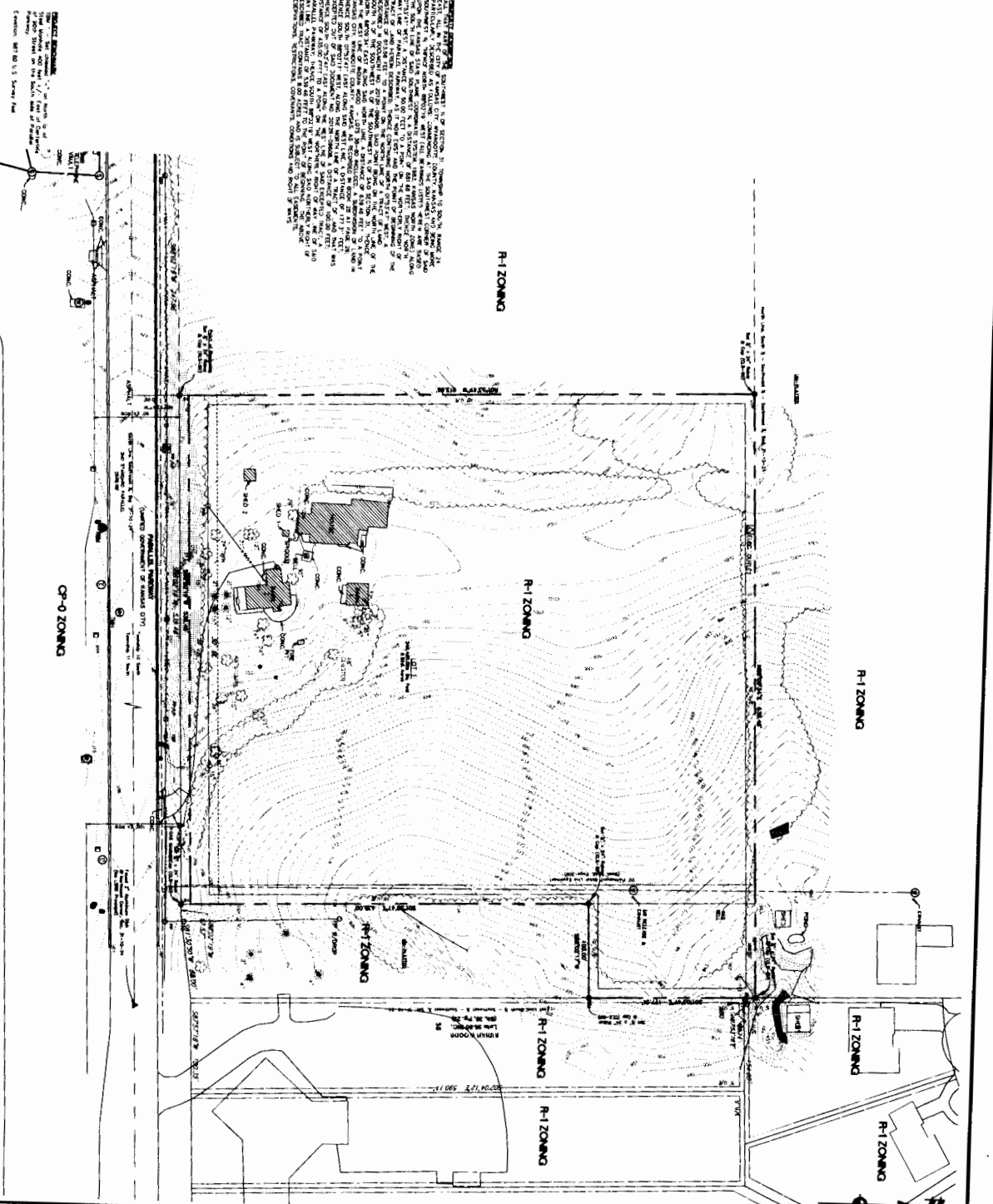
PROPERTY LINE  
 EAST JEFFERSON STREET LINE  
 EAST DORRISDALE STREET LINE  
 EAST STONEY STREET LINE  
 EAST VAN SICKLE STREET LINE  
 EAST QUANGHAI STREET LINE  
 EAST 114TH STREET LINE  
 MAJOR FIRST CENTER  
 MAJOR FIRST CENTER  
 FIRST EAST LINE  
 FIRST WEST LINE  
 SECTION CORNER POINT AS SHOWN  
 TEMPORARY STRUCTURE  
 EAST 114TH STREET  
 EAST 113TH STREET  
 EAST 112TH STREET  
 EAST 111TH STREET  
 EAST 110TH STREET  
 EAST 109TH STREET  
 EAST 108TH STREET  
 EAST 107TH STREET  
 EAST 106TH STREET  
 EAST 105TH STREET  
 EAST 104TH STREET  
 EAST 103TH STREET  
 EAST 102TH STREET  
 EAST 101ST STREET  
 EAST 100TH STREET  
 EAST 99TH STREET  
 EAST 98TH STREET  
 EAST 97TH STREET  
 EAST 96TH STREET  
 EAST 95TH STREET  
 EAST 94TH STREET  
 EAST 93RD STREET  
 EAST 92RD STREET  
 EAST 91RD STREET  
 EAST 90RD STREET  
 EAST 89RD STREET  
 EAST 88RD STREET  
 EAST 87RD STREET  
 EAST 86RD STREET  
 EAST 85RD STREET  
 EAST 84RD STREET  
 EAST 83RD STREET  
 EAST 82RD STREET  
 EAST 81RD STREET  
 EAST 80RD STREET  
 EAST 79RD STREET  
 EAST 78RD STREET  
 EAST 77RD STREET  
 EAST 76RD STREET  
 EAST 75RD STREET  
 EAST 74RD STREET  
 EAST 73RD STREET  
 EAST 72RD STREET  
 EAST 71RD STREET  
 EAST 70RD STREET  
 EAST 69RD STREET  
 EAST 68RD STREET  
 EAST 67RD STREET  
 EAST 66RD STREET  
 EAST 65RD STREET  
 EAST 64RD STREET  
 EAST 63RD STREET  
 EAST 62RD STREET  
 EAST 61RD STREET  
 EAST 60RD STREET  
 EAST 59RD STREET  
 EAST 58RD STREET  
 EAST 57RD STREET  
 EAST 56RD STREET  
 EAST 55RD STREET  
 EAST 54RD STREET  
 EAST 53RD STREET  
 EAST 52RD STREET  
 EAST 51RD STREET  
 EAST 50RD STREET  
 EAST 49RD STREET  
 EAST 48RD STREET  
 EAST 47RD STREET  
 EAST 46RD STREET  
 EAST 45RD STREET  
 EAST 44RD STREET  
 EAST 43RD STREET  
 EAST 42RD STREET  
 EAST 41RD STREET  
 EAST 40RD STREET  
 EAST 39RD STREET  
 EAST 38RD STREET  
 EAST 37RD STREET  
 EAST 36RD STREET  
 EAST 35RD STREET  
 EAST 34RD STREET  
 EAST 33RD STREET  
 EAST 32RD STREET  
 EAST 31RD STREET  
 EAST 30RD STREET  
 EAST 29RD STREET  
 EAST 28RD STREET  
 EAST 27RD STREET  
 EAST 26RD STREET  
 EAST 25RD STREET  
 EAST 24RD STREET  
 EAST 23RD STREET  
 EAST 22RD STREET  
 EAST 21RD STREET  
 EAST 20RD STREET  
 EAST 19RD STREET  
 EAST 18RD STREET  
 EAST 17RD STREET  
 EAST 16RD STREET  
 EAST 15RD STREET  
 EAST 14RD STREET  
 EAST 13RD STREET  
 EAST 12RD STREET  
 EAST 11RD STREET  
 EAST 10RD STREET  
 EAST 9RD STREET  
 EAST 8RD STREET  
 EAST 7RD STREET  
 EAST 6RD STREET  
 EAST 5RD STREET  
 EAST 4RD STREET  
 EAST 3RD STREET  
 EAST 2RD STREET  
 EAST 1RD STREET  
 EAST 0RD STREET

- LEGEND**
- 1. 1" = 50' HORIZONTAL SCALE
  - 2. 1" = 10' VERTICAL SCALE
  - 3. 1" = 10' HORIZONTAL SCALE
  - 4. 1" = 10' VERTICAL SCALE
  - 5. 1" = 10' HORIZONTAL SCALE
  - 6. 1" = 10' VERTICAL SCALE
  - 7. 1" = 10' HORIZONTAL SCALE
  - 8. 1" = 10' VERTICAL SCALE
  - 9. 1" = 10' HORIZONTAL SCALE
  - 10. 1" = 10' VERTICAL SCALE
  - 11. 1" = 10' HORIZONTAL SCALE
  - 12. 1" = 10' VERTICAL SCALE
  - 13. 1" = 10' HORIZONTAL SCALE
  - 14. 1" = 10' VERTICAL SCALE
  - 15. 1" = 10' HORIZONTAL SCALE
  - 16. 1" = 10' VERTICAL SCALE
  - 17. 1" = 10' HORIZONTAL SCALE
  - 18. 1" = 10' VERTICAL SCALE
  - 19. 1" = 10' HORIZONTAL SCALE
  - 20. 1" = 10' VERTICAL SCALE
  - 21. 1" = 10' HORIZONTAL SCALE
  - 22. 1" = 10' VERTICAL SCALE
  - 23. 1" = 10' HORIZONTAL SCALE
  - 24. 1" = 10' VERTICAL SCALE
  - 25. 1" = 10' HORIZONTAL SCALE
  - 26. 1" = 10' VERTICAL SCALE
  - 27. 1" = 10' HORIZONTAL SCALE
  - 28. 1" = 10' VERTICAL SCALE
  - 29. 1" = 10' HORIZONTAL SCALE
  - 30. 1" = 10' VERTICAL SCALE
  - 31. 1" = 10' HORIZONTAL SCALE
  - 32. 1" = 10' VERTICAL SCALE
  - 33. 1" = 10' HORIZONTAL SCALE
  - 34. 1" = 10' VERTICAL SCALE
  - 35. 1" = 10' HORIZONTAL SCALE
  - 36. 1" = 10' VERTICAL SCALE
  - 37. 1" = 10' HORIZONTAL SCALE
  - 38. 1" = 10' VERTICAL SCALE
  - 39. 1" = 10' HORIZONTAL SCALE
  - 40. 1" = 10' VERTICAL SCALE
  - 41. 1" = 10' HORIZONTAL SCALE
  - 42. 1" = 10' VERTICAL SCALE
  - 43. 1" = 10' HORIZONTAL SCALE
  - 44. 1" = 10' VERTICAL SCALE
  - 45. 1" = 10' HORIZONTAL SCALE
  - 46. 1" = 10' VERTICAL SCALE
  - 47. 1" = 10' HORIZONTAL SCALE
  - 48. 1" = 10' VERTICAL SCALE
  - 49. 1" = 10' HORIZONTAL SCALE
  - 50. 1" = 10' VERTICAL SCALE
  - 51. 1" = 10' HORIZONTAL SCALE
  - 52. 1" = 10' VERTICAL SCALE
  - 53. 1" = 10' HORIZONTAL SCALE
  - 54. 1" = 10' VERTICAL SCALE
  - 55. 1" = 10' HORIZONTAL SCALE
  - 56. 1" = 10' VERTICAL SCALE
  - 57. 1" = 10' HORIZONTAL SCALE
  - 58. 1" = 10' VERTICAL SCALE
  - 59. 1" = 10' HORIZONTAL SCALE
  - 60. 1" = 10' VERTICAL SCALE
  - 61. 1" = 10' HORIZONTAL SCALE
  - 62. 1" = 10' VERTICAL SCALE
  - 63. 1" = 10' HORIZONTAL SCALE
  - 64. 1" = 10' VERTICAL SCALE
  - 65. 1" = 10' HORIZONTAL SCALE
  - 66. 1" = 10' VERTICAL SCALE
  - 67. 1" = 10' HORIZONTAL SCALE
  - 68. 1" = 10' VERTICAL SCALE
  - 69. 1" = 10' HORIZONTAL SCALE
  - 70. 1" = 10' VERTICAL SCALE
  - 71. 1" = 10' HORIZONTAL SCALE
  - 72. 1" = 10' VERTICAL SCALE
  - 73. 1" = 10' HORIZONTAL SCALE
  - 74. 1" = 10' VERTICAL SCALE
  - 75. 1" = 10' HORIZONTAL SCALE
  - 76. 1" = 10' VERTICAL SCALE
  - 77. 1" = 10' HORIZONTAL SCALE
  - 78. 1" = 10' VERTICAL SCALE
  - 79. 1" = 10' HORIZONTAL SCALE
  - 80. 1" = 10' VERTICAL SCALE
  - 81. 1" = 10' HORIZONTAL SCALE
  - 82. 1" = 10' VERTICAL SCALE
  - 83. 1" = 10' HORIZONTAL SCALE
  - 84. 1" = 10' VERTICAL SCALE
  - 85. 1" = 10' HORIZONTAL SCALE
  - 86. 1" = 10' VERTICAL SCALE
  - 87. 1" = 10' HORIZONTAL SCALE
  - 88. 1" = 10' VERTICAL SCALE
  - 89. 1" = 10' HORIZONTAL SCALE
  - 90. 1" = 10' VERTICAL SCALE
  - 91. 1" = 10' HORIZONTAL SCALE
  - 92. 1" = 10' VERTICAL SCALE
  - 93. 1" = 10' HORIZONTAL SCALE
  - 94. 1" = 10' VERTICAL SCALE
  - 95. 1" = 10' HORIZONTAL SCALE
  - 96. 1" = 10' VERTICAL SCALE
  - 97. 1" = 10' HORIZONTAL SCALE
  - 98. 1" = 10' VERTICAL SCALE
  - 99. 1" = 10' HORIZONTAL SCALE
  - 100. 1" = 10' VERTICAL SCALE



**811**  
 Know what's below.  
 Call before you dig.

FOR A LIST OF PARTICIPATING UTILITIES, VISIT  
 WWW.KANSAS811.COM OR CALL 1-800-455-1111  
 KANSAS 811 IS A SERVICE PROVIDED BY THE  
 KANSAS DEPARTMENT OF TRANSPORTATION  
 AND THE KANSAS DEPARTMENT OF REVENUE  
 IN PARTNERSHIP WITH THE KANSAS  
 DEPARTMENT OF ENERGY AND ENVIRONMENT  
 AND THE KANSAS DEPARTMENT OF HEALTH  
 AND HUMAN SERVICES.



**CR-Q ZONING**

**R-1 ZONING**

**R-1 ZONING**

**R-1 ZONING**

**R-1 ZONING**

**R-1 ZONING**

**R-1 ZONING**

**R-1 ZONING**

**ATWELL**  
 1242 EAST 50TH STREET, SUITE 100  
 WYANDOTTE COUNTY, KANSAS 66202  
 (785) 938-0050  
 WWW.ATWELLINC.COM

CLIENT: HEALTH AND WELLNESS SUITES OF KANSAS CITY, KANSAS CITY, KS  
 PROJECT: FINAL ENGINEERING PLANS  
 DATE: 06/27/2013

PROVIDENCE NORTH  
 PARALLEL PARKWAY & N. 91ST STREET  
 CITY OF KANSAS CITY  
 WYANDOTTE COUNTY, KANSAS

**ATWELL**  
 1242 EAST 50TH STREET, SUITE 100  
 WYANDOTTE COUNTY, KANSAS 66202  
 (785) 938-0050  
 WWW.ATWELLINC.COM

Lead Designer & Civil Engineer  
 Designer & Engineer  
 Surveyor & Topographer  
 Professional & Public Works  
 Water & Storm Drainage