

☒ Original Record ☐ Correction ☐ Change in Well Use

MW-208B

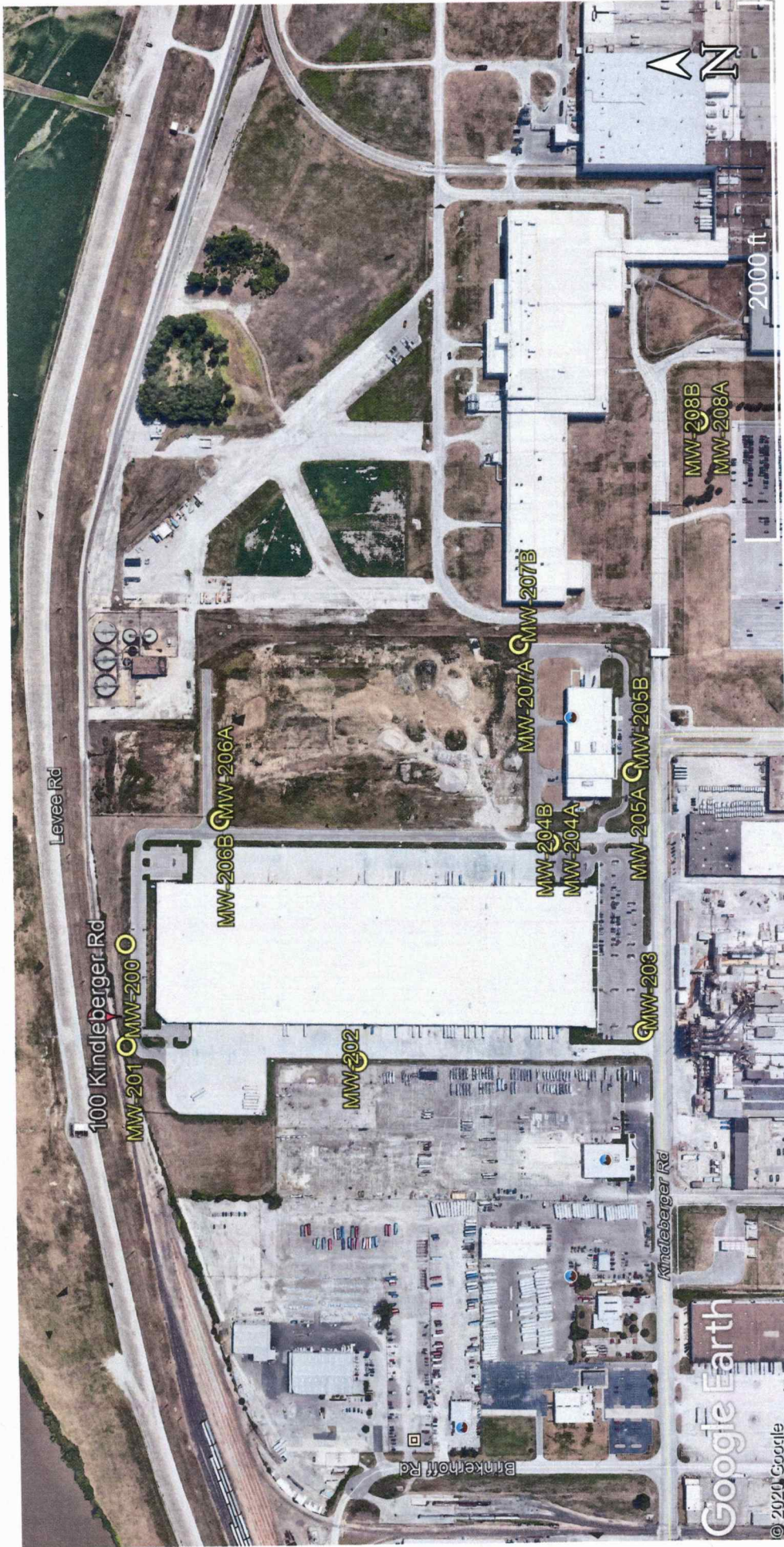
Well ID

KSA 82a-1212

Revised 7/10/2015

Wyandotte

27-110-R25E



Project Site:

Former General Motors Corp., 100 Kindleberger Road, Kansas City

GPS Coordinates:

MW-200: 39.151692, -94.613351
MW-201: 39.155697, -94.614706
MW-202: 39.153334, -94.614938
MW-203: 39.150406, -94.614568
MW-204A: 39.151352, -94.612049
MW-204B: 39.151334, -94.612050

MW-205A: 39.150502, -94.611124
MW-205B: 39.150500, -94.611100
MW-206A: 39.154714, -94.611716
MW-206B: 39.154724, -94.611704
MW-206C: 39.154735, -94.611690
MW-207A: 39.151645, -94.609423

MW-207B: 39.151635, -94.609405
MW-207C: 39.151628, -94.609430
MW-208A: 39.149778, -94.606494
MW-208B: 39.149778, -94.606511
MW-208C: 39.149779, -94.606527

RECEIVED

JUN 08 2020

BUREAU OF WATER