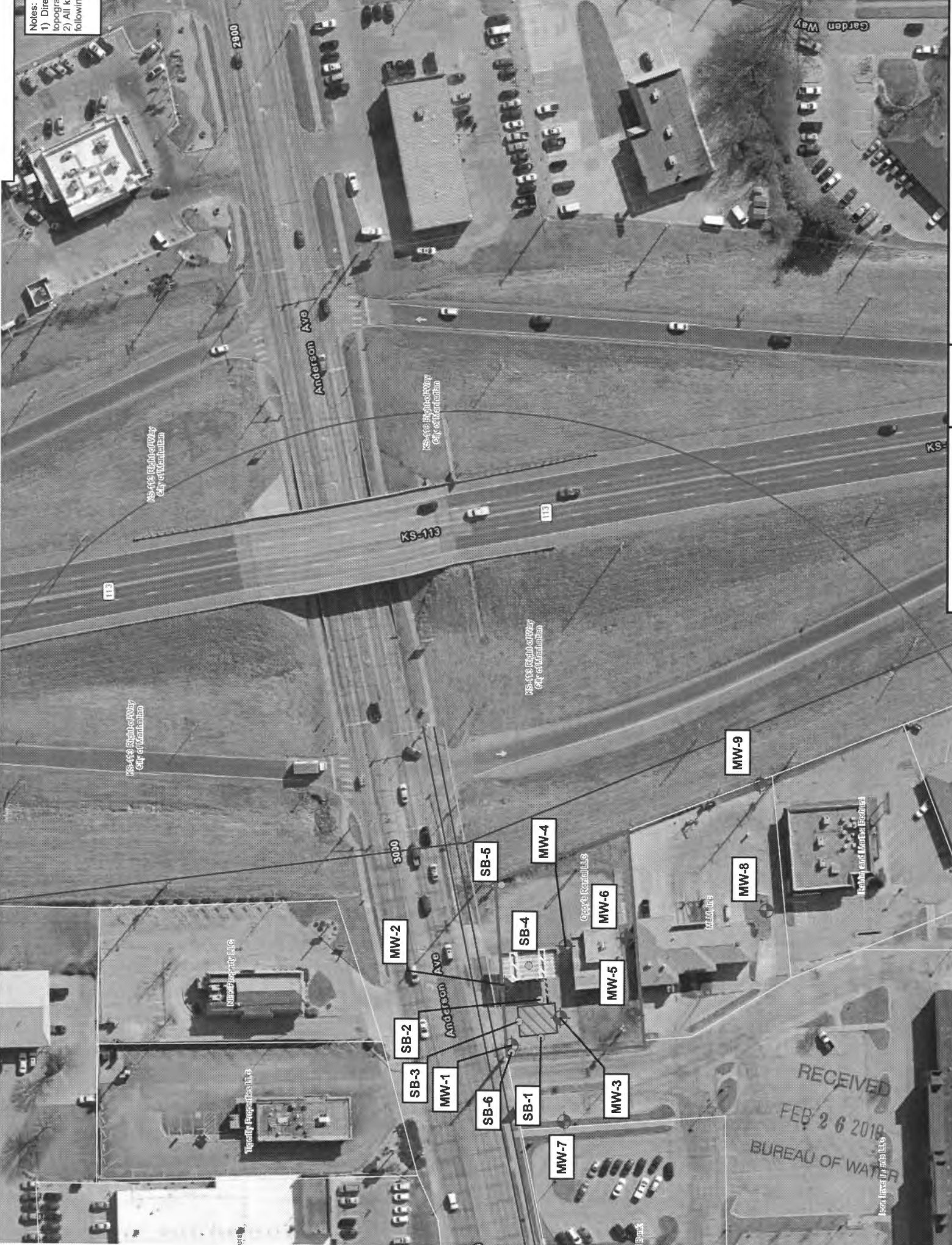


Notes:
1) Direct
topographic
2) All kn
following



KS: 419 Rights of Way
City of Manhattan

KS: 419 Rights of Way
City of Manhattan

KS: 419 Rights of Way
City of Manhattan

KS: 419 Rights of Way
City of Manhattan

3000

Anderson Ave

City of Manhattan, KS

3000

Manhattan Municipal Building

Manhattan Municipal Building

Manhattan Municipal Building

MW-2

SB-2

SB-3

MW-1

SB-6

SB-1

MW-7

SB-5

MW-4

SB-4

MW-6

MW-5

MW-3

MW-9

MW-8

RECEIVED
FEB 26 2019
BUREAU OF WATER

1200 Inverness Dr. Manhattan, KS 66506

DENNIS L HANDKE

1820 NW 59th Terrace
TOPEKA, KANSAS 66618
785-286-4047 Home
785-286-1990 Fax

Chris Carey
ppB EnviroSolutions LLC
712 S. Kansas Ave.
Topeka, Kansas, 66603

February 10, 2019

RE: Monitor Well Elevation Survey
3001 Anderson Ave., Manhattan, Kansas

Proj. 19-00H
Oppy Bros., Inc.
U5-081-15104

Bench Mark: Chisled Sq. on NW corner of concrete sign base at NE of the property.
Elev: 1048.69 North 84.66 West 1508.42 (from SE Cor. Sec. 11-10-7E)

MW	Point	Elev	North	West	Coordinates
MW-1	rim	1049.04	North	66.00	SE1/4,SE1/4,SW1/4,SE1/4
	top pipe	1048.47	West	1636.44	Lat= 39.18933 Long = 96.61322
MW-2	rim	1049.56	North	72.04	SE1/4,SE1/4,SW1/4,SE1/4
	top pipe	1049.08	West	1598.29	Lat= 39.18935 Long = 96.61308
MW-3	rim	1049.25	North	30.54	SE1/4,SE1/4,SW1/4,SE1/4
	top pipe	1048.71	West	1611.44	Lat= 39.18923 Long = 96.61313
MW-4	rim	1049.99	North	20.06	SE1/4,SE1/4,SW1/4,SE1/4
	top pipe	1049.47	West	1559.15	Lat= 39.18921 Long = 96.61294
MW-5	rim	1049.26	South	33.62	NE1/4,NE1/4,NW1/4,NE1/4 (Sec. 14-10-7E)
	top pipe	1048.80	West	1600.15	Lat= 39.18906 Long = 96.61309
MW-6	rim	1049.70	South	20.29	NE1/4,NE1/4,NW1/4,NE1/4 (Sec. 14-10-7E)
	top pipe	1049.19	West	1538.54	Lat= 39.18910 Long = 96.61287
MW-7	rim	1049.74	North	25.20	SE1/4,SE1/4,SW1/4,SE1/4
	top pipe	1049.24	West	1708.27	Lat= 39.18922 Long = 96.61347
MW-8	rim	1043.08	South	151.00	NE1/4,NE1/4,NW1/4,NE1/4 (Sec. 14-10-7E)
	top pipe	1042.83	West	1538.89	Lat= 39.18874 Long = 96.61287
MW-9	rim	1041.01	South	156.77	NE1/4,NE1/4,NW1/4,NE1/4 (Sec. 14-10-7E)
	top pipe	1040.41	West	1444.59	Lat= 39.18874 Long = 96.61287

Lat & Long derived existing Manhattan 7.5' quad map. WGS 84.

Elevation established from project U5-081-13896, NAVD 27.

If you have any questions, please feel free to call me. Thank you for the opportunity to be of service to you.

February 10, 2019
Dennis L. Handke RLS
Dennis L. Handke
LAND SURVEYOR
KANSAS

RECEIVED
FEB 26 2019
BUREAU OF WATER