

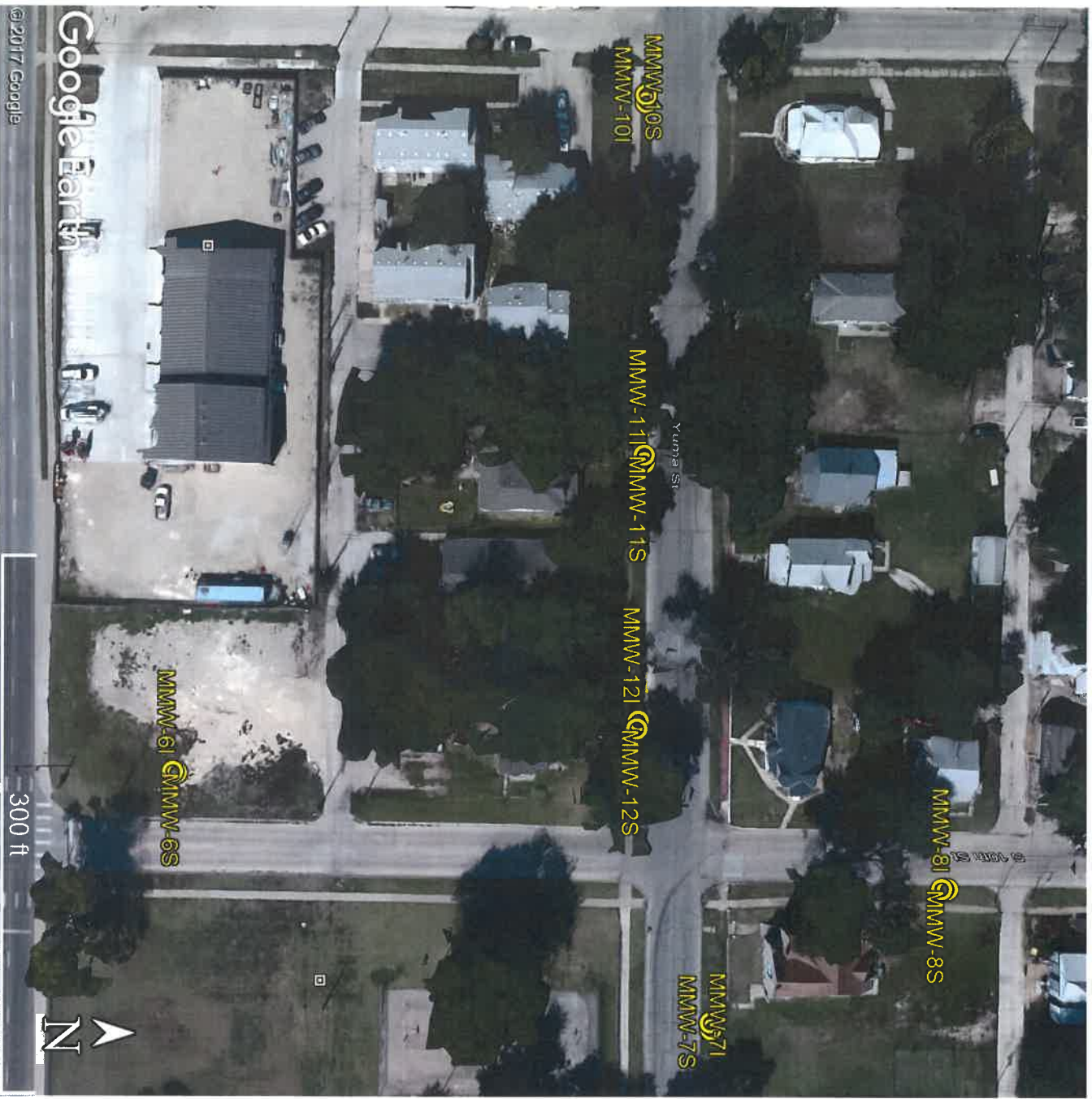
MMW-111

Well ID

Revised 7/10/2015

Riley

18-10-8E



ONE Gas – Manhattan MGP Site (for Burns and McDonell)
515 S. 11th Street, Manhattan, Kansas

GPS Coordinates:

MMW-6I: 39.1744943, -96.5719465
MMW-7I: 39.1753152, -96.5714534
MMW-8I: 39.1756761, -96.5717184
MMW-10I: 39.1752158, -96.5732630
MMW-11I: 39.1752132, -96.5725527
MMW-12I: 39.1752053, -96.5720468

MMW-6S: 39.1745002, -96.5719436
MMW-7S: 39.1753162, -96.5714398
MMW-8S: 39.1756676, -96.5717183
MMW-10S: 39.1752155, -96.5732778
MMW-11S: 39.1752134, -96.5725679
MMW-12S: 39.1752030, -96.5720320

RECEIVED

OCT 16 2017

BUREAU OF WATER