

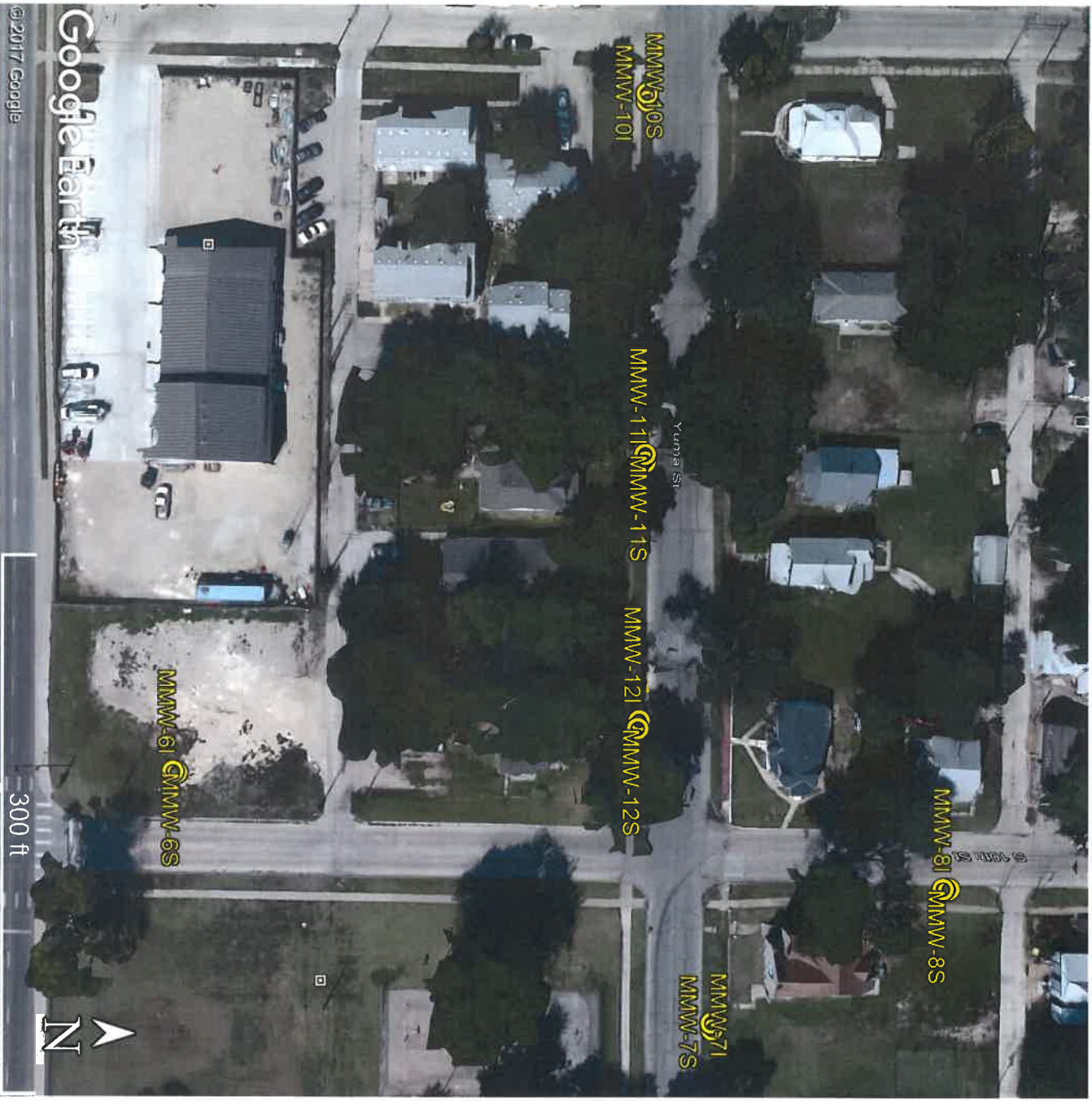
**MMW-12S**

Well ID

**Revised 7/10/2015**

Riley

18-10-8E



ONE Gas – Manhattan MGP Site (for Burns and McDonell)  
515 S. 11<sup>th</sup> Street, Manhattan, Kansas

GPS Coordinates:

MMW-6I: 39.1744943, -96.5719465  
MMW-7I: 39.1753152, -96.5714534  
MMW-8I: 39.1756761, -96.5717184  
MMW-10I: 39.1752158, -96.5732630  
MMW-11I: 39.1752132, -96.5725527  
MMW-12I: 39.1752053, -96.5720468

MMW-6S: 39.1745002, -96.5719436  
MMW-7S: 39.1753162, -96.5714398  
MMW-8S: 39.1756676, -96.5717183  
MMW-10S: 39.1752155, -96.5732778  
MMW-11S: 39.1752134, -96.5725679  
MMW-12S: 39.1752030, -96.5720320

RECEIVED

OCT 16 2017

BUREAU OF WATER