

DENNIS L HANDKE

1820 NW 59th Terrace
TOPEKA, KANSAS 66618
785-286-4047 Home

Jamie Murphy
ppB Enviro-Solutions
112 SW 6th Ave, Suite 201
Topeka, Kansas, 66603

April 25, 2021

RE: Monitor Well Elevation Survey
481 McDowell Creek Road, Manhattan, Kansas

Proj. 21-00L
Capitol City Oil, Inc
A5-081-40502

Bench Mark: Chisled Square on South center of garage floor near the NE corner of property.

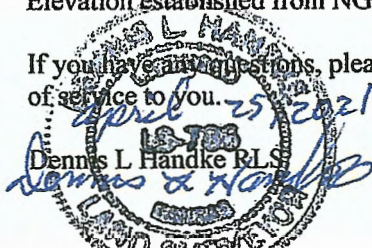
Elev: 1011.49 North 2717.02 West 4431.52 (from SE Cor. Sec. 20-10-8E)

MW-1	rim	1011.81	North	2622.68	SW1/4,SE1/4,SW1/4,NW1/4
	top pipe	1011.49	West	4488.33	Lat= 39.16680 Long = 96.55441
MW-2	rim	1012.13	North	2537.15	NW1/4,NE1/4,NW1/4,SW1/4
	top pipe	1011.53	West	4508.56	Lat= 39.16656 Long = 96.55449
MW-3	rim	1011.62	North	2585.08	NW1/4,NE1/4,NW1/4,SW1/4
	top pipe	1011.27	West	4550.60	Lat= 39.16670 Long = 96.55463
MW-4	rim	1011.27	North	2623.99	SW1/4,SE1/4,SW1/4,NW1/4
	top pipe	1010.57	West	4575.63	Lat= 39.16680 Long = 96.55472
MW-5	rim	1011.67	North	2612.10	SW1/4,SE1/4,SW1/4,NW1/4
	top pipe	1010.84	West	4457.21	Lat= 39.16677 Long = 96.55431
MW-6	rim	1012.29	North	2553.69	NW1/4,NE1/4,NW1/4,SW1/4
	top pipe	1011.81	West	4441.73	Lat= 39.16661 Long = 96.55425
MW-7	rim	1011.85	North	2695.77	SW1/4,SE1/4,SW1/4,NW1/4
	top pipe	1011.22	West	4463.49	Lat= 39.16700 Long = 96.55433
MW-8	rim	1010.81	North	2643.24	SW1/4,SE1/4,SE1/4,NW1/4
	top pipe	1010.22	West	4612.00	Lat= 39.16686 Long = 96.55485
MW-9	rim	1010.55	North	2609.16	SE1/4,SW1/4,SW1/4,NW1/4
	top pipe	1009.80	West	4661.84	Lat= 39.16676 Long = 96.55503
MW-10	rim	1012.10	North	2533.93	NW1/4,NE1/4,NW1/4,SW1/4
	top pipe	1011.54	West	4541.79	Lat= 39.16656 Long = 96.55460

Lat & Long derived from Manhatta 7.5' quad map. WGS84

Elevation established from NGS BM FF 115. NAVD 88

If you have any questions, please feel free to call me. Thank you for the opportunity to be of service to you.



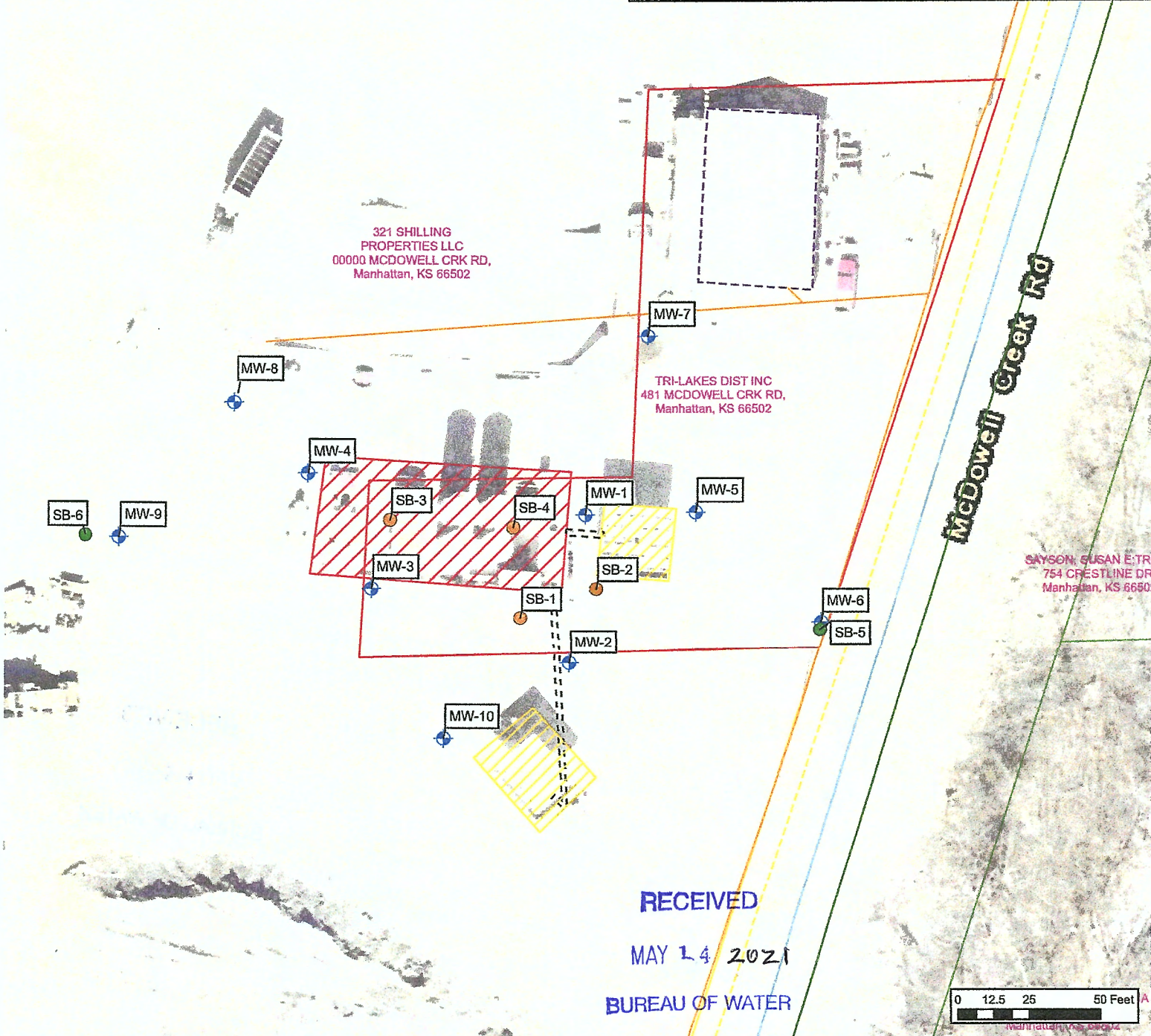
RECEIVED

MAY 14 2021

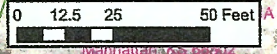
BUREAU OF WATER

Capital City Oil Property Boundary	Current Building	Overhead Electric	Agricultural	Other
Monitoring Well	Former Product Lines	Communication	Commercial	Residential
Soil Boring	Former Pump Islands	Sewer	Exempt	Utilities
Geotechnical Boring	Former Tank Area	Water	Farm Homesite	Vacant
			Not for Profit	

Notes:
 1) Groundwater flow direction unknown, but inferred towards the west based on topography and regional drainage
 2) All known utilities visible during the site visit are shown. Figures will be updated following the public and private utility locates conducted during the LSA.




RECEIVED
 MAY 14 2021
 BUREAU OF WATER



DESIGNED BY:	CP
DRAWN BY:	CP
CHECKED BY:	JM
APPROVED BY:	CC
DATE:	FEBRUARY 2021



Site Map
Capital City Oil, Inc.



481 McDowell Creek Rd.
Manhattan, Kansas
A5-081-40502

FIGURE
2

Limited Site Assessment Work Plan