

WATER WELL RECORD Form WWC-5

Division of Water Resources App. No.

Well ID

MW-1

Original Record Correction Change in Well Use

1 LOCATION OF WATER WELL: County: Riley Fraction NE 1/4 NW 1/4 NW 1/4 SW 1/4 Section Number 17 Township Number T 10 S Range Number R 8 E W

2 WELL OWNER: Last Name: Kuhn Velma L Trust Address: 4755 Adair Ave N City: Crystal State: NM ZIP: 55429 Street or Rural Address where well is located: 215 E. Poyntz Ave

3 LOCATE WELL WITH 'X' IN SECTION BOX: N W X E S 1 mile

4 DEPTH OF COMPLETED WELL: 20 ft. Depth(s) Groundwater Encountered: 1) 20 ft. 2) 16.10 ft. 3) 7.1-2021. WELL'S STATIC WATER LEVEL: 16.10 ft. below land surface, measured on (mo-day-yr) 7-1-2021.

5 Latitude: 39.18120 (decimal degrees) Longitude: 96.55531 (decimal degrees) Horizontal Datum: WGS 84 NAD 83 NAD 27 Source for Latitude/Longitude: GPS (unit make/model) Land Survey Topographic Map Online Mapper

6 Elevation: 1008.90 ft. Ground Level TOC Source: Land Survey GPS Topographic Map Other

7 WELL WATER TO BE USED AS: 1. Domestic: Household Lawn & Garden Livestock 2. Irrigation 3. Feedlot 4. Industrial 5. Public Water Supply: well ID 6. Dewatering: how many wells? 7. Aquifer Recharge: well ID 8. Monitoring: well ID MW-1 9. Environmental Remediation: well ID Air Sparge Soil Vapor Extraction Recovery Injection 10. Oil Field Water Supply: lease 11. Test Hole: well ID Cased Uncased Geotechnical 12. Geothermal: how many bores? a) Closed Loop Horizontal Vertical b) Open Loop Surface Discharge Inj. of Water 13. Other (specify):

Was a chemical/bacteriological sample submitted to KDHE? Yes No If yes, date sample was submitted: Water well disinfected? Yes No

8 TYPE OF CASING USED: Steel PVC Other CASING JOINTS: Glued Clamped Welded Threaded Casing diameter 2 in. to 10 ft. Diameter in. to ft. Diameter in. to ft. Casing height above land surface 0 in. Weight lbs./ft. Wall thickness or gauge No. sch 40

TYPE OF SCREEN OR PERFORATION MATERIAL: Steel Stainless Steel Fiberglass PVC Other (Specify) Brass Galvanized Steel Concrete tile None used (open hole)

SCREEN OR PERFORATION OPENINGS ARE: Continuous Slot Mill Slot Gauze Wrapped Torch Cut Drilled Holes Other (Specify) Louvered Shutter Key Punched Wire Wrapped Saw Cut None (Open Hole)

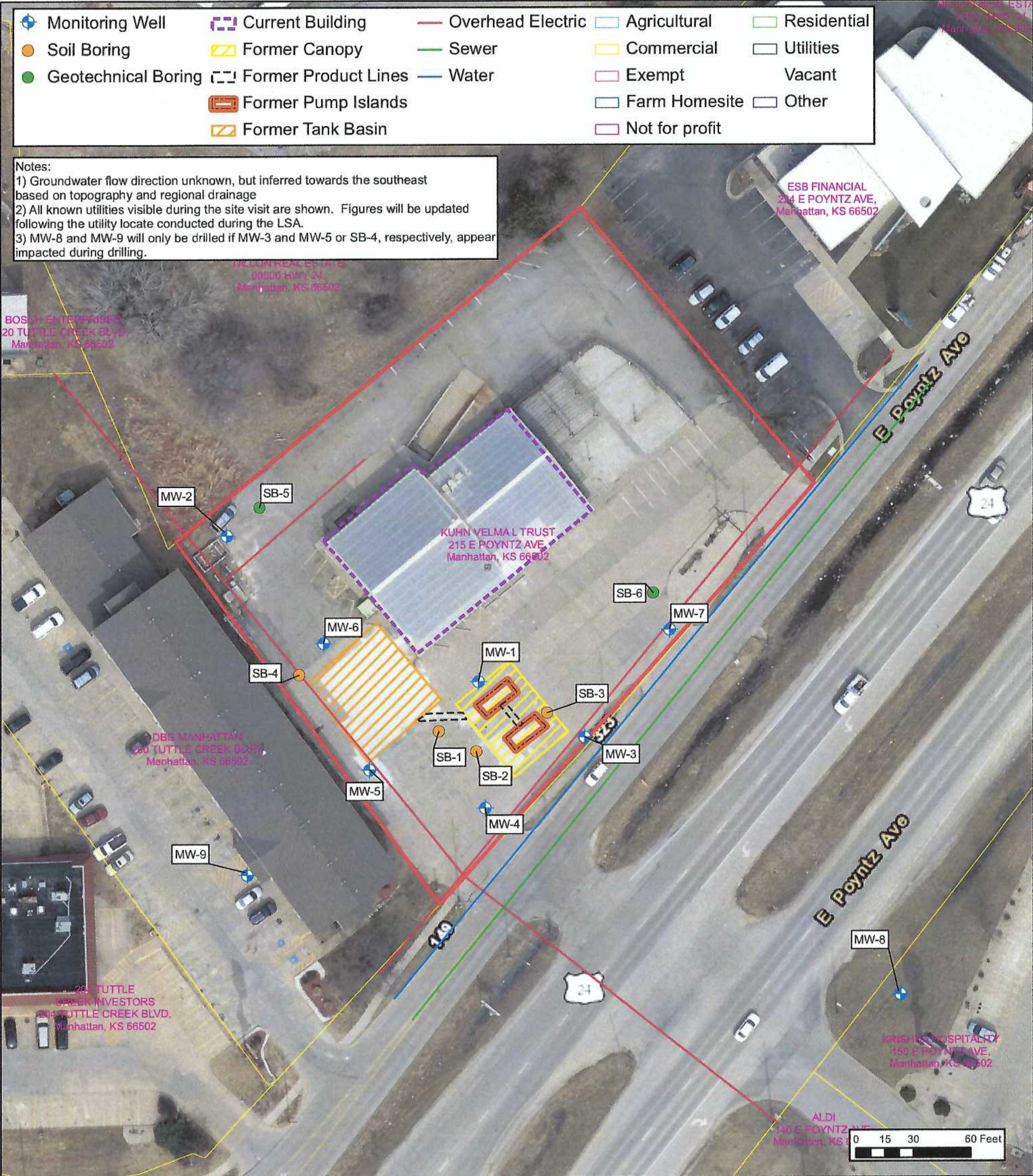
SCREEN-PERFORATED INTERVALS: From 10 ft. to 20 ft. From ft. to ft. From ft. to ft. GRAVEL PACK INTERVALS: From 8 ft. to 20 ft. From ft. to ft. From ft. to ft.

9 GROUT MATERIAL: Neat cement Cement grout Bentonite Other cement pad Grout Intervals: From 1 ft. to 8 ft. From 0 ft. to 1 ft. From ft. to ft.

Nearest source of possible contamination: Septic Tank Lateral Lines Pit Privy Livestock Pens Insecticide Storage Sewer Lines Cess Pool Sewage Lagoon Fuel Storage Abandoned Water Well Watertight Sewer Lines Seepage Pit Feedyard Fertilizer Storage Oil Well/Gas Well Other (Specify) contaminated site Direction from well? Distance from well? ft.

Table with 6 columns: 10 FROM, TO, LITHOLOGIC LOG, FROM, TO, LITHO. LOG (cont.) or PLUGGING INTERVALS. Rows include concrete, Silty Clay, Sand, Clay, Sand, Clay, Clay, Clay.

11 CONTRACTOR'S OR LANDOWNER'S CERTIFICATION: This water well was constructed, reconstructed, or plugged under my jurisdiction and was completed on (mo-day-year) 6-30-2021 and this record is true to the best of my knowledge and belief. Kansas Water Well Contractor's License No. 604 This Water Well Record was completed on (mo-day-year) 8-10-21 under the business name of Environmental Priority Service, Inc. Signature P. J. [unclear]



Notes:
 1) Groundwater flow direction unknown, but inferred towards the southeast based on topography and regional drainage
 2) All known utilities visible during the site visit are shown. Figures will be updated following the utility locate conducted during the LSA.
 3) MW-8 and MW-9 will only be drilled if MW-3 and MW-5 or SB-4, respectively, appear impacted during drilling.

BOSCH ENTERPRISES
 20 TUTTLE CREEK BLVD,
 Manhattan, KS 66502

DEJUN REAL ESTATE
 80500 HWY 24,
 Manhattan, KS 66502

ESB FINANCIAL
 214 E POYNTZ AVE,
 Manhattan, KS 66502

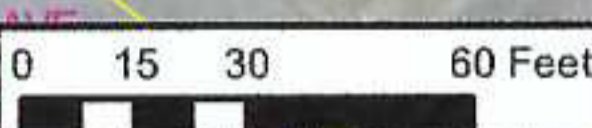
KUHN VELMAL TRUST
 215 E POYNTZ AVE,
 Manhattan, KS 66502

DBB MANHATTAN
 200 TUTTLE CREEK BLVD,
 Manhattan, KS 66502

TUTTLE CREEK INVESTORS
 204 TUTTLE CREEK BLVD,
 Manhattan, KS 66502

KRISHNA HOSPITALITY
 150 E POYNTZ AVE,
 Manhattan, KS 66502

ALDI
 140 E POYNTZ AVE,
 Manhattan, KS



DESIGNED BY:	CP
DRAWN BY:	CP
CHECKED BY:	JM
APPROVED BY:	CC
DATE:	MAY 2021



Site Map
MKC - Manhattan



215 E. Poyntz
Manhattan, Kansas
U4-075-15213

FIGURE
2

**Limited Site
Assessment
Work Plan**

DENNIS L HANDKE

1820 NW 59th Terrace
TOPEKA, KANSAS 66618
785-286-4047 Home

Jamie Murphy
112 SW 6th Street, Suite 201
Topeka, Kansas, 66603

July 29, 2021

RE: Monitor Well Elevation Survey
215 E. Poyntz, Manhattan, Kansas

Proj. 21-00W
MKC - Manhattan
U4-075-15213

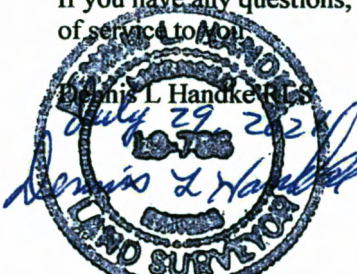
Bench Mark: Chisled Square on SW corner of concrete Sidewalk at SW corner of building.
Elev: 1010.39 North 2636.53 West 4780.83 (from SE Cor. Sec. 17-10-8E)

✓ MW-1	rim	1009.19	North	2617.27	NE1/4,NW1/4,NW1/4,SW1/4
	top pipe	1008.90	West	4750.88	Lat= 39.18120 Long = 96.55531
✓ MW-2	rim	1009.79	North	2706.77	NE1/4,NW1/4,NW1/4,SW1/4
	top pipe	1009.30	West	4871.90	Lat= 39.18145 Long = 96.55574
✓ MW-3	rim	1008.35	North	2600.29	NE1/4,NW1/4,NW1/4,SW1/4
	top pipe	1007.91	West	4692.73	Lat= 39.18115 Long = 96.55511
✓ MW-4	rim	1008.26	North	2554.28	NE1/4,NW1/4,NW1/4,SW1/4
	top pipe	1007.60	West	4745.82	Lat= 39.18103 Long = 96.55530
✓ MW-5	rim	1009.00	North	2571.83	NE1/4,NW1/4,NW1/4,SW1/4
	top pipe	1008.44	West	4807.69	Lat= 39.18108 Long = 96.55551
✓ MW-6	rim	1010.07	North	2643.72	NE1/4,NW1/4,NW1/4,SW1/4
	top pipe	1009.56	West	4830.25	Lat= 39.18127 Long = 96.55559
✓ MW-7	rim	1008.67	North	2656.98	NE1/4,NW1/4,NW1/4,SW1/4
	top pipe	1008.35	West	4651.15	Lat= 39.18131 Long = 96.55496
✓ MW-8	rim	1009.63	North	2449.92	SW1/4,NE1/4,NW1/4,SW1/4
	top pipe	1009.08	West	4517.87	Lat= 39.18074 Long = 96.55449
✓ MW-9	rim	1011.66	North	2511.00	NE1/4,NW1/4,NW1/4,SW1/4
	top pipe	1011.15	West	4885.78	Lat= 39.18091 Long = 96.55579

Lat & Long derived from Manhattan 7.5' quad map. WGS84

Elevation established from NGS BM G 370. NAVD 88

If you have any questions, please feel free to call me. Thank you for the opportunity to be of service to you!



RECEIVED
AUG 13 2021
BUREAU OF WATER